



# Pupil Yield Factors & Public School Clusters

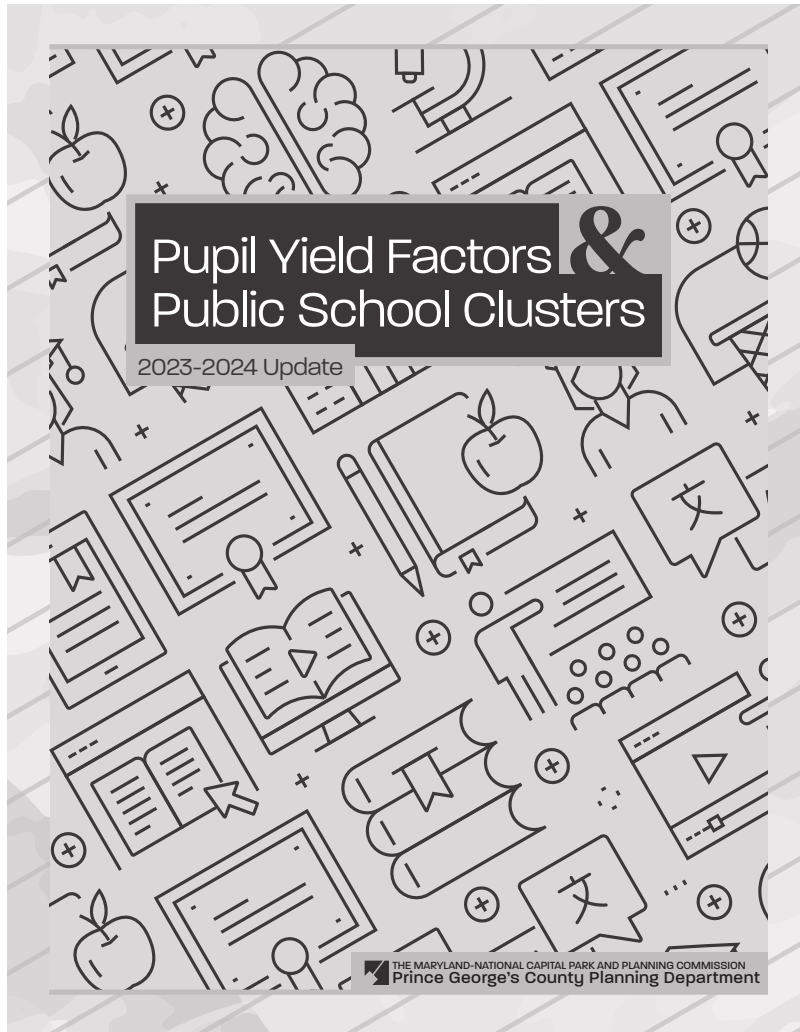
2023–2024 Update



# Abstract

<b>Date</b>	May 2024
<b>Title</b>	Pupil Yield Factors & Public School Clusters: 2023–2024 Update
<b>Author</b>	The Maryland-National Capital Park and Planning Commission
<b>Subject</b>	This report analyzes the pupil yield factors used in the regulatory review of preliminary subdivision plans and investigates a proposed development’s impact on Prince George’s County public schools.
<b>Source of copies</b>	The Maryland-National Capital Park and Planning Commission 1616 McCormick Drive Largo, MD 20774
<b>Series number</b>	989242702
<b>Number of pages</b>	54

This study updates the pupil yield factors which are used in the regulatory review of preliminary plans of subdivision. These factors are used to measure the impact that a new subdivision will have on the public schools that might serve the proposed subdivision. To determine the schools that might be impacted by a proposed subdivision, school clusters are created and updated by the County public school system. The school clusters are also part of this update.



May 2024

**The Maryland-National Capital Park and Planning Commission**  
Prince George's County Planning Department  
1616 McCormick Drive  
Largo, MD 20774

[www.pgplanning.org](http://www.pgplanning.org)

# The Maryland-National Capital Park and Planning Commission

Peter A. Shapiro, Chair  
Artie Harris, Jr., Vice Chair

## Officers

Asuntha Chiang-Smith, Executive Director  
Gavin Cohen, Secretary-Treasurer  
Debra Borden, General Counsel

The Maryland-National Capital Park and Planning Commission (M-NCPPC) is a bicounty agency, created by the General Assembly of Maryland in 1927. The Commission's geographic authority extends to the great majority of Montgomery and Prince George's Counties: the Maryland-Washington Regional District (M-NCPPC planning jurisdiction) comprises 1,001 square miles, while the Metropolitan District (parks) comprises 919 square miles, in the two counties.

The Commission has three major functions:

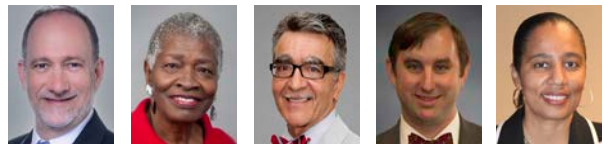
- The preparation, adoption, and, from time to time, amendment or extension of the General Plan for the physical development of the Maryland-Washington Regional District.
- The acquisition, development, operation, and maintenance of a public park system.
- In Prince George's County only, the operation of the entire county public recreation program.

The Commission operates in each county through a Planning Board appointed by and responsible to the County government. All local plans, recommendations on zoning amendments, administration of subdivision regulations, and general administration of parks are responsibilities of the Planning Boards.

The Prince George's County Planning Department:

- The mission of the Prince George's County Planning Department is to promote economic vitality, environmental sustainability, design excellence, and quality development that promotes healthy lifestyles in Prince George's County neighborhoods.
- Our vision is to be a model planning department of responsive and respected staff who provide superior planning and technical services and work cooperatively with decision makers, citizens, and other agencies to continuously improve development quality and the environment and act as a catalyst for positive change.

## PRINCE GEORGE'S COUNTY PLANNING BOARD



Peter A. Shapiro,  
Chair

Dorothy F. Bailey,  
Vice Chair

Manuel R. Geraldo,  
Esq.

William Doerner

A. Shuanise Washington

## MONTGOMERY COUNTY PLANNING BOARD



Artie L. Harris, Jr.,  
Chair

Mitra Pedoeem,  
Vice Chair

Shawn Bartley,  
Esq.

James Hendrick,  
Ph.D.

Josh Linden

# Prince George's County



Angela Alsobrooks,  
County Executive

## **County Council**

The County Council has three main responsibilities in the planning process: (1) setting policy, (2) plan approval, and (3) plan implementation. Applicable policies are incorporated into area plans, functional plans, and the general plan. The Council, after holding a hearing on the plan adopted by the Planning Board, may approve the plan as adopted, approve the plan with amendments based on the public record, or disapprove the plan and return it to the Planning Board for revision. Implementation is primarily through adoption of the annual Capital Improvement Program, the annual Budget, the water and sewer plan, and adoption of zoning map amendments.

## **COUNCIL MEMBERS**

Jolene Ivey, Chair, 5th District

Sydney J. Harrison, Vice Chair, 9th District

Thomas E. Dernoga, 1st District

Wanika B. Fisher, 2nd District

Eric C. Olson, 3rd District

Ingrid S. Watson, 4th District

Wala Blegay, 6th District

Krystal Oriadha, 7th District

Edward P. Burroughs, III, 8th District

Mel Franklin, At-large

Calvin S. Hawkins, II, At-large

**Clerk of the Council:** Donna J. Brown

# Table of Contents



PHOTO: M-NCPPC

**Introduction..... 8**

**Pupil Yield Factors..... 9**

Subdivision Regulations.....9  
Methodology and Results..... 10

**Public School Clusters..... 11**

Legislative Background.....11  
Methodology for Cluster Updates.....11  
Enrollment and Capacity..... 15  
Cluster Area 1..... 16  
Cluster Area 2..... 18  
Cluster Area 3..... 22  
Cluster Area 4..... 26  
Cluster Area 5..... 30  
Cluster Area 6..... 34  
School Overcrowding Conditions..... 36

**Appendices..... 41**

**Appendix A.** SY 2023-2024 Official Enrollment..... 42  
**Appendix B.** Adopted Subdivision Regulations..... 48  
**Appendix C.** Elementary School Map Index..... 50

**Acknowledgments..... 52**

## Photography

ADDITIONAL IMAGES BY M-NCPPC:

PAGE 16	PAGE 26
PAGE 18	PAGE 28
PAGE 20	PAGE 30
PAGE 22	PAGE 32
PAGE 24	PAGE 34

## List of Tables

<b>Table 1.</b>	Student Enrollment, 2019–2023 .....	8
<b>Table 2.</b>	Pupil Yield Factors, 2023.....	10
<b>Table 3.</b>	Calculating Pupil Yields/Student Generation Rates .....	10
<b>Table 4.</b>	Cluster Area 1 Schools Feeder Pattern .....	16
<b>Table 5.</b>	Cluster Area 1 Elementary Schools.....	17
<b>Table 6.</b>	Cluster Area 1 Middle Schools .....	17
<b>Table 7.</b>	Cluster Area 1 High Schools .....	17
<b>Table 8.</b>	Cluster Area 2 Schools Feeder Pattern.....	18
<b>Table 9.</b>	Cluster Area 2 Elementary Schools .....	21
<b>Table 10.</b>	Cluster Area 2 Middle Schools.....	21
<b>Table 11.</b>	Cluster Area 2 High Schools.....	21
<b>Table 12.</b>	Cluster Area 3 Schools Feeder Pattern.....	22
<b>Table 13.</b>	Cluster Area 3 Elementary Schools .....	24
<b>Table 14.</b>	Cluster Area 3 Middle Schools.....	24
<b>Table 15.</b>	Cluster Area 3 High Schools.....	24
<b>Table 16.</b>	Cluster Area 4 Schools Feeder Pattern.....	26
<b>Table 17.</b>	Cluster Area 4 Elementary Schools.....	28
<b>Table 18.</b>	Cluster Area 4 Middle Schools.....	29
<b>Table 19.</b>	Cluster Area 4 High Schools.....	29
<b>Table 20.</b>	Cluster Area 5 Schools Feeder Pattern.....	30
<b>Table 21.</b>	Cluster Area 5 Elementary Schools .....	32
<b>Table 22.</b>	Cluster Area 5 Middle Schools.....	32
<b>Table 23.</b>	Cluster Area 5 High Schools.....	32
<b>Table 24.</b>	Cluster Area 6 Schools Feeder Pattern.....	34
<b>Table 25.</b>	Cluster Area 6 Elementary Schools.....	35
<b>Table 26.</b>	Cluster Area 6 Middle Schools.....	35
<b>Table 27.</b>	Cluster Area 6 High Schools.....	35
<b>Table 28.</b>	September 30th, 2023 PGCPs Enrollment.....	42
<b>Table 29.</b>	Elementary School Utilization Rates .....	50

## List of Maps

<b>Map 1.</b>	2024 School Cluster Map .....	12
<b>Map 2.</b>	Elementary School Utilization in Prince George's County .....	37
<b>Map 3.</b>	Middle School Utilization in Prince George's County.....	38
<b>Map 4.</b>	High School Utilization in Prince George's County .....	39



# Introduction

The Pupil Yield Factors and Public School Clusters Report updates the pupil yield factors that are used in the regulatory review of preliminary subdivision plans and for analyzing a proposed development’s impact on public schools.

To determine such impact, pupil yield factors are computed by spatially joining student addresses and dwelling units. Moreover, six school clusters are updated to reflect changes to the Prince George’s County Public Schools’ (PGCPS) boundaries.

Furthermore, the September 30th, 2023 total public school enrollment data are tabulated for the past five school years (**Table 1**). The school utilization rate by school cluster is presented in accompanying tables and maps.

This report uses school districts instead of school sites for planning purposes because school impact analyses are intended to show a proposed development’s impact on its located public school districts.



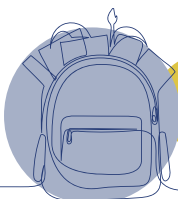
PHOTO: M-NCPPC

**Table 1.** Student Enrollment, 2019–2023

School Year	Total Enrollment*
September 30, 2019	135,110
September 30, 2020	131,162
September 30, 2021	128,271
September 30, 2022	130,798
September 30, 2023	130,983

\*Adjusted for Half-Day Pre-Kindergarten.

Source: Prince George’s County Public Schools





# PART i

# Pupil Yield Factors



PHOTO: M-NOPPC

## Subdivision Regulations

The term “pupil yield factor” is defined as:

“The estimated number of elementary, middle, and high school students per dwelling unit, as determined by the Planning Director, from information provided by the Superintendent of the Prince George’s County Public Schools” (Prince George’s County Subdivision Regulations, Section 24- 2300).

In Prince George’s County, the pupil yield computation is integral to the subdivision review process. Planning Department staff review the proposed preliminary subdivision plan and determine the number and type of residential units to be built. Those numbers are multiplied by the pupil yield factor to obtain the projected number of elementary, middle, and high school students generated by the proposed plan.

The Planning Department’s pupil yield factors are used for development review purposes rather than for the County’s public school enrollment projections. PGCPs updates enrollment projections yearly and includes them in the annual Educational Facilities Master Plan (EFMP), as required by the Maryland Department of Planning.

## Methodology and Results

PGCPS provides the official September 30th student enrollment data (**Appendix A**) and geocoded student addresses for County elementary, middle, and high schools. Planning Department staff join the geocoded student addresses to the PropertyInfo database using ArcGIS. The PropertyInfo database is derived from Maryland State Department of Assessments and Taxation data related to property boundaries that more closely represent the County's land use and ownership information.

By spatially joining geocoded student addresses to PropertyInfo, the Planning Department staff can account for an occupied housing unit where multiple children may attend the same or different school districts. The total number of housing units is then aggregated by housing type. The housing types include single-family detached, single-family attached (including townhouses), and multifamily.

**Table 2.** Pupil Yield Factors, 2023

Housing Unit Type	School Level		
	Elementary	Middle	High
Single-Family Detached (SFD)	0.195	0.095	0.132
Single-Family Attached (SFA)	0.134	0.067	0.096
Multifamily (MF)	0.156	0.069	0.088

Source: Prince George's County Planning Department

Based on the geocoded student addresses from the September 30th, 2023 enrollment data, the Planning Department staff calculated the 2023 pupil yield factors as presented in **Table 2**. The pupil yield factor is derived using the following formula:

$$\frac{\text{Sum of student addresses by school type by housing type}}{\text{divided by total housing units by housing type}}$$

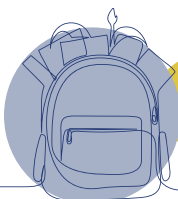
**Table 3** illustrates a hypothetical computation of the pupil yield. This example demonstrates how to calculate the number of students generated from a new, proposed 100-dwelling-unit subdivision. The formula is expressed as:

$$\text{Number of dwelling units} \times \text{pupil yield factor} = \text{pupil yields (or students) generated by the proposed preliminary subdivision}$$

**Table 3.** Calculating Pupil Yields/Student Generation Rates

Housing Unit Type	Number of Housing Units	School Level						Total Pupil Yield
		Elementary		Middle		High		
		Factors	Pupil Yield	Factors	Pupil Yield	Factors	Pupil Yield	
Single-Family Detached (SFD)	100	0.195	19.5	0.095	9.5	0.132	13.2	42.2
Single-Family Attached (SFA)	100	0.134	13.4	0.067	6.7	0.096	9.6	29.7
Multifamily (MF)	100	0.156	15.6	0.069	6.9	0.088	8.8	31.3

Source: Prince George's County Planning Department



# PART ii

# Public School Clusters



PHOTO: M-NOPPC

## Legislative Background

On October 23, 2018, the Prince George’s County Council adopted CR-015-2018 (DR-3), and amendments were adopted in CR-088-2021. The new Subdivision Regulations aim to streamline procedures and encourage appropriate input into the subdivision review process. The effective date of these regulations was April 1, 2022. Under the regulations, the Prince George’s County Planning Director is responsible for evaluating school capacity when a preliminary subdivision plan is proposed.

Section 24-4510(b) of the adopted Subdivision Regulations (Adopted LOS Standard for Schools) retains the adequacy determination requirements that utilize the school clusters to gauge the impact of a proposed preliminary subdivision on public schools. “The number of students generated by the proposed subdivision at each stage of development will not exceed 105 percent of the state rated capacity, as adjusted by the School Regulations, of the affected elementary, middle, and high school clusters.”<sup>1</sup> The utilization rate is the percentage of adjusted full-time enrollment (or full-time equivalent) divided by the state-rated capacity.

## Methodology for Cluster Updates

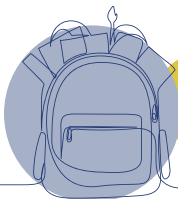
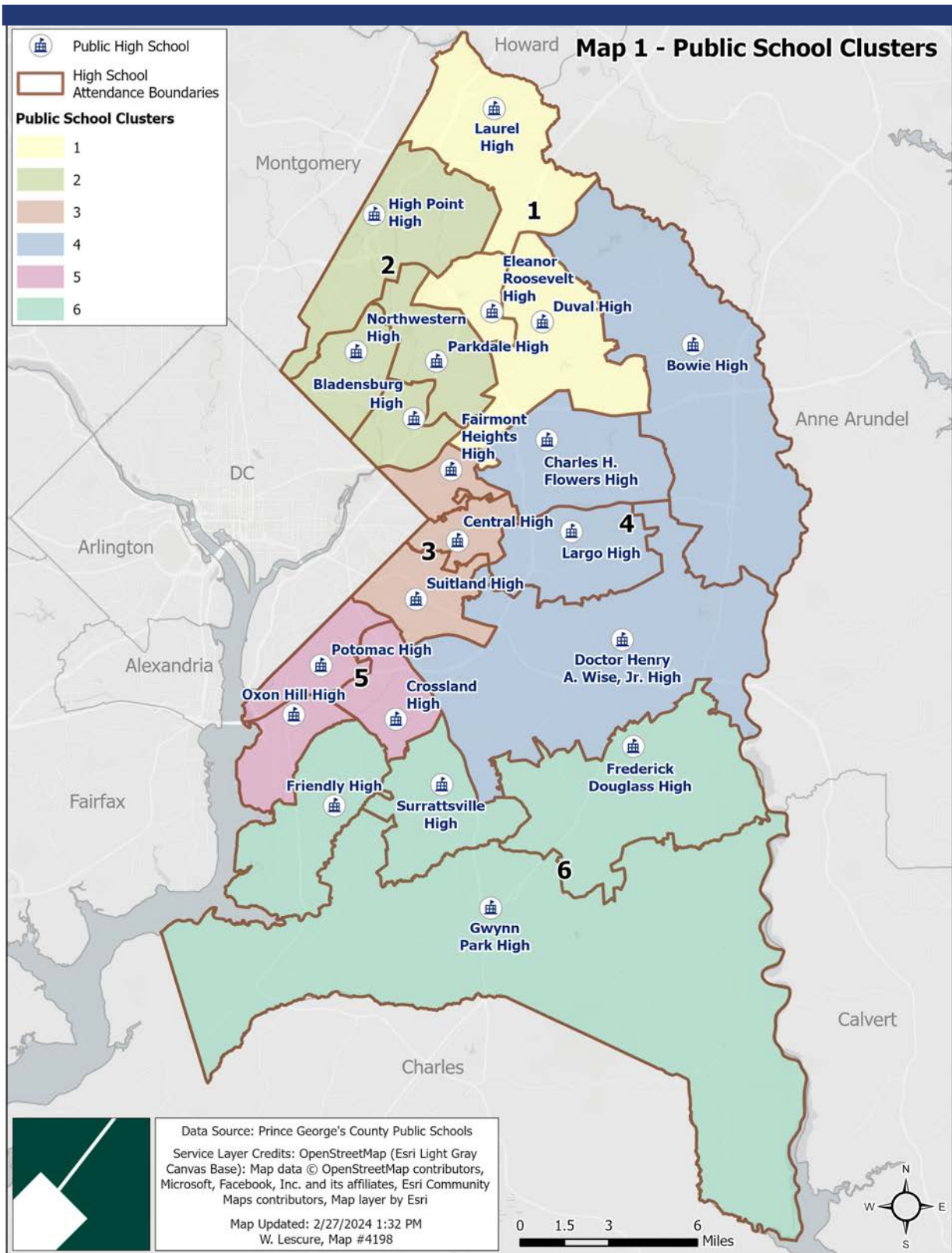
The school clusters are based on the County’s public school feeder system. The feeder system is a matrix developed by PGCPSS that provides families with the flow of schools that students will attend as they move from elementary to middle school and finally to high school. The system allows groups of students to stay together throughout their years in the County’s public schools.

It is worth noting that some elementary schools feed into two or more middle schools and similar situations for some middle schools that feed multiple high schools. Both situations occur in Prince George’s County and other counties in Maryland, such as neighboring Howard County.

Planning Department staff use the PGCPSS SY 2023-2024 feeder patterns to update the public school clusters, which are built upon high schools and their associated feeder middle and elementary schools. **Map 1** displays all six clusters by high school district in the County.

<sup>1</sup> <https://online.encodeplus.com/regs/princegeorgescounty-md/doc-viewer.aspx?secid=1047#secid-1047>

Map 1. 2024 School Cluster Map





# PART ii

## Public School Clusters

Not all public schools are included in these tables. Language immersion schools, creative and performing arts schools, gifted and talented schools, or regional schools generally draw their enrollment from a wide geographic area. As a result, they do not have neighborhood attendance areas, so neither are included in the calculation of cluster area utilization nor the PGCPs feeder system.

In addition, there was no state-rated capacity for the 2023-2024 school year for Adelphi Elementary School, Templeton Elementary School, and Woodmore Elementary School. The school system's Educational Facilities Master Plan(s) (EFMP)<sup>2</sup> or Capital Improvement Program and Budget<sup>3</sup> elaborate on changes to these schools.

### **Adelphi Elementary School**

According to the FY2023 EFMP, “the New Adelphi Area MS is being built as part of the Alternative Finance Construction (ACF) program on the former Adelphi ES site. Adelphi students have been relocated to allow for construction to begin.” The new middle school was anticipated to open in 2023. “Adelphi ES students are temporarily housed at the prior Cherokee Lane ES to allow for the construction of the new Adelphi Area MS that will be built on the elementary school site. Adelphi ES will be consolidated with the adjacent Cool Spring ES following the completion of a renovation/addition project.”

### **Templeton Elementary School**

The 2020-2025 Approved Capital Improvement Program and Budget described, “A full renovation/replacement and addition is recommended for Templeton Elementary School driven by educational adequacy deficiencies, poor condition of the building systems and overutilization. Using the Board-adopted prototypical educational specifications, the EFMP recommends 25,000 additional SF [square feet] for a capacity of 640.”

The FY2021 EFMP indicated “Templeton ES Modernization (Capacity 609).” The FY2023 EFMP noted that this school was in Cycle 1 for modernization and replacement, which may take four to six years for planning, design, and construction. The EFMP did not state when the school would reopen for students.

### **Woodmore Elementary School**

The FY2022 and 2023 EFMPs revealed that this school was in Cycle 3 for modernization and replacement, which may take four to six years for planning, design, and construction. In addition, Woodmore Elementary School Swing Information Session | April 25, 2023, Questions & Answers<sup>4</sup> specified, “The Woodmore ES building will be demolished. The Woodmore ES school program will remain at the swing location of Meadowbrook ES until 2027” and its name will remain “during the swing.” In addition, “Woodmore ES students will be attending Meadowbrook,” and the Woodmore school “will be surplus to the county.”

<sup>2</sup> <https://www.pgcps.org/offices/capital-programs/>

<sup>3</sup> [https://www.princegeorgescountymd.gov/sites/default/files/media-document/dcv27318\\_board-of-education.pdf](https://www.princegeorgescountymd.gov/sites/default/files/media-document/dcv27318_board-of-education.pdf)

<sup>4</sup> <https://www.pgcps.org/globalassets/offices/capital-programs/docs---capital-programs/projects/woodmore-swing-qa-23.04.25.pdf>



PHOTO: M-NCPPC

Creative and performing arts schools draw attendance from geographic regions that extend beyond neighborhood attendance areas and are thus not included in the cluster area utilization calculations.

PART  
**ii**

# Public School Clusters



PHOTO: M-NOPPC

## Enrollment and Capacity

This section displays the September 30th, 2023 enrollment data, state-rated capacity, and utilization rates by school for each cluster; four types of tables are grouped together. **Tables 4, 8, 12, 16, 20, and 24** stipulate the elementary, middle, and high school feeder patterns. Following each of the preceding feeder pattern tables are three additional tables providing enrollment, capacity, and utilization data for each elementary, middle, and high school within the corresponding feeder pattern.

Academies, which include grades pre-K or K through eight, are included in the Cluster Area Schools Feeder Pattern charts but not exhibited in data tables for enrollment, state-rated capacity, and utilization rate. The enrollment, state-rated capacity, and utilization rates for those academies are shown in **Appendix C**.

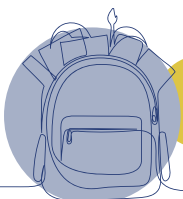


# Cluster Area 1

**Table 4.** Cluster Area 1 Schools Feeder Pattern

High School	Middle School	Elementary School
DuVal High	Kenmoor Middle	Dodge Park Elementary Judge Sylvania W. Woods Sr. Elem William Paca Elementary
	Thomas Johnson Middle	Catherine T. Reed Elementary Gaywood Elementary Glenn Dale Elementary Glenridge Elementary James McHenry Elementary Robert Frost Elementary Seabrook Elementary Woodmore Elementary
Eleanor Roosevelt High	Greenbelt Middle	Berwyn Heights Elementary Greenbelt Elementary Magnolia Elementary Springhill Lake Elementary
Laurel High	Dwight D. Eisenhower Middle	Deerfield Run Elementary James H. Harrison Elementary Laurel Elementary Montpelier Elementary Oaklands Elementary Scotchtown Hills Elementary
	Martin Luther King Jr. Middle	Bond Mill Elementary Scotchtown Hills Elementary Vansville Elementary

Source: Prince George's County Public Schools





**Table 5. Cluster Area 1 Elementary Schools**

Elementary Schools	September 30, 2023 Enrollment	State Rated Capacity	Building Utilization*
Berwyn Heights Elementary	477	429	111.19%
Bond Mill Elementary	468	479	97.70%
Catherine T. Reed Elementary	435	457	95.19%
Deerfield Run Elementary	512	570	89.82%
Deerfield Run Elementary	512	570	89.82%
Dodge Park Elementary	554	511	108.41%
Gaywood Elementary	506	386	131.09%
Glenn Dale Elementary	457	404	113.12%
Glenridge Elementary	760	828	91.79%
Greenbelt Elementary	543	568	95.60%
James H. Harrison Elementary	301	343	87.76%
James McHenry Elementary	676	537	125.88%
Judge Sylvania W. Woods Sr. Elementary	631	719	87.76%
Laurel Elementary	498	493	101.01%
Magnolia Elementary	397	449	88.42%
Montpelier Elementary	571	609	93.76%
Oaklands Elementary	462	408	113.24%
Robert Frost Elementary	289	309	93.53%
Scotchtown Hills Elementary	568	790	71.90%
Seabrook Elementary	354	409	86.55%
Springhill Lake Elementary	757	561	134.94%
Vansville Elementary	669	836	80.02%
William Paca Elementary	574	601	95.51%
<b>Total Cluster Area 1</b>	<b>11,971</b>	<b>12,266</b>	<b>97.59%</b>

**Table 6. Cluster Area 1 Middle Schools**

Middle Schools	September 30, 2023 Enrollment	State Rated Capacity	Building Utilization*
Dwight D. Eisenhower Middle	1,033	1,049	98.47%
Greenbelt Middle	1,242	1,101	112.81%
Kenmoor Middle	914	1,200	76.17%
Martin Luther King Jr. Middle	628	850	73.88%
Thomas Johnson Middle	1,239	1,030	120.29%
<b>Total Cluster Area 1</b>	<b>5,056</b>	<b>5,230</b>	<b>96.67%</b>

**Table 7. Cluster Area 1 High Schools**

High Schools	September 30, 2023 Enrollment	State Rated Capacity	Building Utilization*
DuVal High School	2,484	2,258	110.01%
Eleanor Roosevelt High	2,557	2,096	121.99%
Laurel High	2,179	1,867	116.71%
<b>Total Cluster Area 1</b>	<b>7,220</b>	<b>6,221</b>	<b>116.06%</b>

Source: Prince George's County Public Schools

\*Building Utilization is the percentage of the Adjusted Enrollment to the State Rated Capacity.

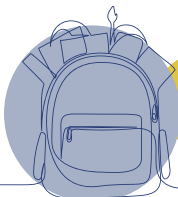


# Cluster Area 2

**Table 8.** Cluster Area 2 Schools Feeder Pattern

High School	Middle School	Elementary School	
Bladensburg High School	Charles Carroll Middle	Beacon Heights Elementary	
		Carrlton Elementary	
		Cooper Lane Elementary	
		Gladys Noon Spellman Elementary	
		Glenridge Elementary	
		Judge Sylvania W. Woods Sr. Elem	
		Lamont Elementary	
		Robert Frost Elementary	
		Woodridge Elementary	
		G. James Gholson Middle	Columbia Park Elementary
Cora L. Rice Elementary			
Dodge Park Elementary			
Gladys Noon Spellman Elementary			
Highland Park Elementary			
Hyattsville Middle	Chillum Elementary	Chillum Elementary	
		Hyattsville Elementary	
		Mt. Rainier Elementary	
		Riverdale Elementary	
		Rogers Heights Elementary	
		Thomas S. Stone Elementary	
		University Park Elementary	
William Wirt Middle	Berwyn Heights Elementary	Berwyn Heights Elementary	
		Bladensburg Elementary	
		Gladys Noon Spellman Elementary	
		Port Towns Elementary	
		Riverdale Elementary	
		Rogers Heights Elementary	
		Templeton Elementary	
High Point High School	Beltsville Academy	Beltsville Academy*	
		Buck Lodge Middle	Calverton Elementary
			Cherokee Lane Elementary
Hollywood Elementary			
Mary Harris "Mother" Jones Elementary			
		Paint Branch Elementary	

\*Pre-K through 8<sup>th</sup>



**Table 8.** Cluster Area 2 Schools Feeder Pattern (continued)

High School	Middle School	Elementary School	
High Point High School (cont)	Martin Luther King Jr. Middle	Bond Mill Elementary	
		Scotchtown Hills Elementary	
		Vansville Elementary	
	Nicholas Orem Middle	Edward M. Felegy Elementary	Lewisdale Elementary
			Ridgecrest Elementary
Rosa L. Parks Elementary			
Sonia Sotomayor Middle at Adelphi	Adelphi Elementary	Carole Highlands Elementary	
		Cool Spring Elementary	
		Langley Park-McCormick Elementary	
		Mary Harris "Mother" Jones Elementary	
		Ridgecrest Elementary	
Northwestern High School	Buck Lodge Middle	Calverton Elementary	
		Cherokee Lane Elementary	
		Hollywood Elementary	
		Mary Harris "Mother" Jones Elementary	
	Hyattsville Middle	Chillum Elementary	Hyattsville Elementary
			Mt. Rainier Elementary
			Riverdale Elementary
			Rogers Heights Elementary
Thomas S. Stone Elementary			
Nicholas Orem Middle	University Park Elementary	Edward M. Felegy Elementary	
		Lewisdale Elementary	
		Ridgecrest Elementary	
		Rosa L. Parks Elementary	

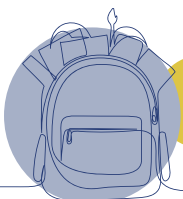


# Cluster Area 2

**Table 8.** Cluster Area 2 Schools Feeder Pattern (continued)

High School	Middle School	Elementary School
Parkdale High School	Buck Lodge Middle	Calverton Elementary Cherokee Lane Elementary Hollywood Elementary Mary Harris "Mother" Jones Elementary Paint Branch Elementary
	Charles Carroll Middle	Beacon Heights Elementary Carrollton Elementary Cooper Lane Elementary Gladys Noon Spellman Elementary Glenridge Elementary Judge Sylvania W. Woods Sr. Elem Lamont Elementary Robert Frost Elementary Woodridge Elementary
	Greenbelt Middle	Berwyn Heights Elementary Greenbelt Elementary Magnolia Elementary Springhill Lake Elementary
	Hyattsville Middle	Chillum Elementary Hyattsville Elementary Mt. Rainier Elementary Riverdale Elementary Rogers Heights Elementary Thomas S. Stone Elementary University Park Elementary
	William Wirt Middle	Berwyn Heights Elementary Bladensburg Elementary Gladys Noon Spellman Elementary Port Towns Elementary Riverdale Elementary Rogers Heights Elementary Templeton Elementary

Source: Prince George's County Public Schools



**Table 9. Cluster Area 2 Elementary Schools**

Elementary Schools	September 30, 2023 Enrollment	State Rated Capacity	Building Utilization*
Beacon Heights Elementary	405	362	111.88%
Berwyn Heights Elementary	477	429	111.19%
Bladensburg Elementary	712	698	102.01%
Bond Mill Elementary	468	479	97.70%
Calverton Elementary	799	589	135.65%
Carole Highlands Elementary	535	535	100.00%
Carrollton Elementary	591	559	105.72%
Cherokee Lane Elementary	816	822	99.27%
Chillum Elementary	305	335	91.04%
Columbia Park Elementary	413	515	80.19%
Cool Spring Elementary	500	535	93.46%
Cooper Lane Elementary	471	494	95.34%
Cora L. Rice Elementary	528	696	75.86%
Dodge Park Elementary	554	511	108.41%
Edward M. Felegy Elementary	656	879	74.63%
Gladys Noon Spellman Elem	497	564	88.12%
Glenridge Elementary	760	828	91.79%
Greenbelt Elementary	543	568	95.60%
Highland Park Elementary	243	574	42.33%
Hollywood Elementary	301	339	88.79%
Hyattsville Elementary	421	406	103.69%
Judge Sylvania W. Woods Sr. Elem	631	719	87.76%
Lamont Elementary	461	503	91.65%
Langley Park-McCormick Elem	696	486	143.21%
Lewisdale Elementary	565	471	119.96%
Magnolia Elementary	397	449	88.42%
Mary Harris "Mother" Jones Elem	782	769	101.69%
Mt. Rainier Elementary	285	406	70.20%
Paint Branch Elementary	481	357	134.73%
Port Towns Elementary	913	809	112.86%
Ridgecrest Elementary	636	693	91.77%
Riverdale Elementary	601	563	106.75%
Robert Frost Elementary	289	309	93.53%
Rogers Heights Elementary	633	610	103.77%
Rosa L. Parks Elementary	586	810	72.35%
Scotchtown Hills Elementary	568	790	71.90%
Springhill Lake Elementary	757	561	134.94%
Thomas S. Stone Elementary	532	638	83.39%
University Park Elementary	535	565	94.69%
Vansville Elementary	669	836	80.02%
Woodridge Elementary	332	337	98.52%
<b>Total Cluster Area 2</b>	<b>22,344</b>	<b>23,398</b>	<b>95.50%</b>

**Table 10. Cluster Area 2 Middle Schools**

Middle Schools	September 30, 2023 Enrollment	State Rated Capacity	Building Utilization*
Buck Lodge Middle	1,154	1,017	113.47%
Charles Carroll Middle	1,200	817	146.88%
G. James Gholson Middle	749	870	86.09%
Greenbelt Middle	1,242	1,101	112.81%
Hyattsville Middle	1,194	1,200	99.50%
Martin Luther King, Jr. Middle	628	850	73.88%
Nicholas Orem Middle	1,055	829	127.26%
Sonia Sotomayor Middle at Adelphi	1,041	1,200	86.75%
William Wirt Middle	1,000	850	117.65%
<b>Total Cluster Area 2</b>	<b>9,263</b>	<b>8,734</b>	<b>106.06%</b>

**Table 11. Cluster Area 2 High Schools**

High Schools	September 30, 2023 Enrollment	State Rated Capacity	Building Utilization*
Bladensburg High	2,095	1,785	117.37%
High Point High	2,960	2,081	142.24%
Northwestern High	2,381	2,340	101.75%
Parkdale High	2,571	2,288	112.37%
<b>Total Cluster Area 2</b>	<b>10,007</b>	<b>8,494</b>	<b>117.81%</b>

Source: Prince George's County Public Schools

\*Building Utilization is the percentage of the Adjusted Enrollment to the State Rated Capacity.

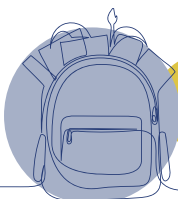


# Cluster Area 3

**Table 12.** Cluster Area 3 Schools Feeder Pattern

High School	Middle School	Elementary School
Central High	G. James Gholson Middle	Columbia Park Elementary
		Cora L. Rice Elementary
	Walker Mill Middle	Dodge Park Elementary
		Gladys Noon Spellman Elementary
Fairmont Heights High	G. James Gholson Middle	Highland Park Elementary
		Capitol Heights Elementary
	Walker Mill Middle	Carmody Hills Elementary
		Concord Elementary
William W. Hall Academy*	Doswell E Brooks Elementary	
	John H. Bayne Elementary	
Fairmont Heights High	G. James Gholson Middle	North Forestville Elementary
		Seat Pleasant Elementary
	Walker Mill Middle	William W. Hall Academy*
		Columbia Park Elementary
Walker Mill Middle	Cora L. Rice Elementary	
	Dodge Park Elementary	
Walker Mill Middle	Gladys Noon Spellman Elementary	
	Highland Park Elementary	
Walker Mill Middle	Capitol Heights Elementary	
	Carmody Hills Elementary	
Walker Mill Middle	Concord Elementary	
	Doswell E Brooks Elementary	
Walker Mill Middle	John H. Bayne Elementary	
	North Forestville Elementary	
Walker Mill Middle	Seat Pleasant Elementary	

\*Pre-K through 8th





**Table 12.** Cluster Area 3 Schools Feeder Pattern (continued)

High School	Middle School	Elementary School
Suitland High	Andrew Jackson Academy	Andrew Jackson Academy*
	Drew-Freeman Middle	Bradbury Heights Elementary Concord Elementary District Heights Elementary Francis Scott Key Elementary Longfields Elementary Suitland Elementary William Beanes Elementary
	Samuel P. Massie Academy	Samuel P. Massie Academy*
	Walker Mill Middle	Capitol Heights Elementary Carmody Hills Elementary Concord Elementary Doswell E Brooks Elementary John H. Bayne Elementary North Forestville Elementary Seat Pleasant Elementary
	William W. Hall Academy	William W. Hall Academy*

Source: Prince George's County Public Schools

\*Pre-K through 8th

# Cluster Area 3



**Table 13.** Cluster Area 3 Elementary Schools

Elementary Schools	September 30, 2023 Enrollment	State Rated Capacity	Building Utilization*
Bradbury Heights Elementary	378	782	48.34%
Capitol Heights Elementary	301	363	82.92%
Carmody Hills Elementary	396	451	87.80%
Columbia Park Elementary	413	515	80.19%
Concord Elementary	204	451	45.23%
Cora L. Rice Elementary	528	696	75.86%
District Heights Elementary	351	515	68.16%
Dodge Park Elementary	554	511	108.41%
Doswell E. Brooks Elementary	202	523	38.62%
Francis Scott Key Elementary	419	677	61.89%
Gladys Noon Spellman Elementary	497	564	88.12%
Highland Park Elementary	243	574	42.33%
John H. Bayne Elementary	310	542	57.20%
Longfields Elementary	264	474	55.70%
North Forestville Elementary	257	438	58.68%
Robert R. Gray Elementary	353	808	43.69%
Seat Pleasant Elementary	273	354	77.12%
Suitland Elementary	466	702	66.38%
William Beanes Elementary	379	560	67.68%
<b>Total Cluster Area 3</b>	<b>6,788</b>	<b>10,500</b>	<b>64.65%</b>

**Table 14.** Cluster Area 3 Middle Schools

Middle Schools	September 30, 2023 Enrollment	State Rated Capacity	Building Utilization*
Drew-Freeman Middle	1,075	1,200	89.58%
G. James Gholson Middle	749	870	86.09%
Walker Mill Middle	1,049	1,200	87.42%
<b>Total Cluster Area 3</b>	<b>2,873</b>	<b>3,270</b>	<b>87.86%</b>

**Table 15.** Cluster Area 3 High Schools

High Schools	September 30, 2023 Enrollment	State Rated Capacity	Building Utilization*
Central High	803	1,143	70.25%
Fairmont Heights High	1,054	1,123	93.86%
Suitland High	1,719	2,000	85.95%
<b>Total Cluster Area 3</b>	<b>3,576</b>	<b>4,266</b>	<b>83.83%</b>

Source: Prince George's County Public Schools

\*Building Utilization is the percentage of the Adjusted Enrollment to the State Rated Capacity.

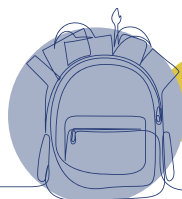






PHOTO: M-NCPPC

Planning Department staff build public school clusters based on PGCPs SY2023-2024 feeder patterns, allowing elementary schools to feed into two or more middle schools and similar situations for some middle schools that feed multiple high schools. Seat Pleasant Elementary School students attend Walker Mill Middle School, which feeds three different high schools.

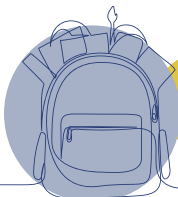


# Cluster Area 4

**Table 16.** Cluster Area 4 Schools Feeder Pattern

High School	Middle School	Elementary School
Bowie High	Benjamin Tasker Middle	Kenilworth Elementary Northview Elementary Pointer Ridge Elementary Tulip Grove Elementary Woodmore Elementary
	Samuel Ogle Middle	High Bridge Elementary Rockledge Elementary Whitehall Elementary Yorktown Elementary
Charles Herbert Flowers High	Ernest Everett Just Middle	Ardmore Elementary Kingsford Elementary Lake Arbor Elementary Woodmore Elementary
	G. James Gholson Middle	Columbia Park Elementary Cora L. Rice Elementary Dodge Park Elementary Gladys Noon Spellman Elementary Highland Park Elementary
	Kenmoor Middle	Dodge Park Elementary Judge Sylvania W. Woods, Sr. Elementary William Paca Elementary
Dr. Henry A. Wise, Jr. High	Andrew Jackson Academy	Andrew Jackson Academy*
	Drew-Freeman Middle	Bradbury Heights Elementary Concord Elementary District Heights Elementary Francis Scott Key Elementary Longfields Elementary Suitland Elementary William Beanes Elementary
	Gwynn Park Middle	Baden Elementary Brandywine Elementary Fort Washington Forest Elementary Marlton Elementary Mattaponi Elementary Rosaryville Elementary

\*Pre-K through 8th



**Table 16.** Cluster Area 4 Schools Feeder Pattern (continued)

High School	Middle School	Elementary School	
Dr. Henry A. Wise, Jr. High (cont)	James Madison Middle	Barack Obama Elementary Melwood Elementary Patuxent Elementary Rosaryville Elementary	
	Kettering Middle	Arrowhead Elementary Kettering Elementary Perrywood Elementary	
	Stephen Decatur Middle	Clinton Grove Elementary Francis T. Evans Elementary James Ryder Randall Elementary Waldon Woods Elementary	
	Thurgood Marshall Middle	Allenwood Elementary Avalon Elementary Hillcrest Heights Elementary J. Frank Dent Elementary Princeton Elementary Samuel Chase Elementary Valley View Elementary	
	Walker Mill Middle	Capitol Heights Elementary Carmody Hills Elementary Concord Elementary Doswell E Brooks Elementary John H. Bayne Elementary North Forestville Elementary Seat Pleasant Elementary	
	Largo High	Ernest Everett Just Middle	Ardmore Elementary Kingsford Elementary Lake Arbor Elementary Woodmore Elementary
		Kettering Middle	Arrowhead Elementary Kettering Elementary Perrywood Elementary
		Walker Mill Middle	Capitol Heights Elementary Carmody Hills Elementary Concord Elementary Doswell E Brooks Elementary John H. Bayne Elementary North Forestville Elementary Seat Pleasant Elementary

Source: Prince George's County Public Schools

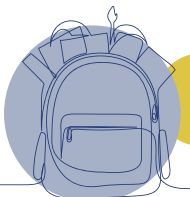


# Cluster Area 4

**Table 17.** Cluster Area 4 Elementary Schools

Elementary Schools	September 30, 2023 Enrollment	State Rated Capacity	Building Utilization*
Allenwood Elementary	333	455	73.19%
Ardmore Elementary	466	523	89.10%
Arrowhead Elementary	406	434	93.55%
Avalon Elementary	302	435	69.43%
Baden Elementary	187	337	55.49%
Barack Obama Elementary	640	834	76.74%
Bradbury Heights Elementary	378	782	48.34%
Brandywine Elementary	573	477	120.13%
Capitol Heights Elementary	301	363	82.92%
Carmody Hills Elementary	396	451	87.80%
Clinton Grove Elementary	299	426	70.19%
Columbia Park Elementary	413	515	80.19%
Concord Elementary	204	451	45.23%
Cora L. Rice Elementary	528	696	75.86%
District Heights Elementary	351	515	68.16%
Dodge Park Elementary	554	511	108.41%
Doswell E. Brooks Elementary	202	523	38.62%
Fort Washington Forest Elementary	391	434	90.09%
Francis Scott Key Elementary	419	677	61.89%
Francis T. Evans Elementary	403	454	88.77%
Gladys Noon Spellman Elementary	497	564	88.12%
High Bridge Elementary	404	371	108.89%
Highland Park Elementary	243	574	42.33%
Hillcrest Heights Elementary	394	703	56.05%
J. Frank Dent Elementary	216	365	59.18%
James Ryder Randall Elementary	284	441	64.40%
John H. Bayne Elementary	310	542	57.20%
Judge Sylvania W. Woods, Sr. Elementary	631	719	87.76%
Kenilworth Elementary	384	448	85.71%
Kettering Elementary	403	589	68.42%
Kingsford Elementary	465	750	62.00%
Lake Arbor Elementary	555	796	69.72%
Longfields Elementary	264	474	55.70%
Marlton Elementary	309	489	63.19%
Mattaponi Elementary	368	458	80.35%
Melwood Elementary	501	633	79.15%
North Forestville Elementary	257	438	58.68%
Northview Elementary	620	797	77.79%
Patuxent Elementary	284	451	62.97%
Perrywood Elementary	535	800	66.88%
Pointer Ridge Elementary	315	596	52.85%
Princeton Elementary	299	448	66.74%
Rockledge Elementary	336	454	74.01%
Rosaryville Elementary	508	783	64.88%
Samuel Chase Elementary	295	383	77.02%

\*Building Utilization is the percentage of the Adjusted Enrollment to the State Rated Capacity.



**Table 17.** Cluster Area 4 Elementary Schools (continued)

Elementary Schools	September 30, 2023 Enrollment	State Rated Capacity	Building Utilization*
Seat Pleasant Elementary	273	354	77.12%
Suitland Elementary	466	702	66.38%
Tulip Grove Elementary	457	457	100.00%
Valley View Elementary	352	541	65.06%
Waldon Woods Elementary	566	568	99.65%
Whitehall Elementary	480	411	116.79%
William Beanes Elementary	379	560	67.68%
William Paca Elementary	574	601	95.51%
Woodmore Elementary	1,000	850	117.65%
Yorktown Elementary	366	457	80.09%
<b>Total Cluster Area 4</b>	<b>22,336</b>	<b>29,860</b>	<b>74.80%</b>

**Table 18.** Cluster Area 4 Middle Schools

Middle Schools	September 30, 2023 Enrollment	State Rated Capacity	Building Utilization*
Benjamin Tasker Middle	1,058	1,040	101.73%
Drew-Freeman Middle	1,075	1,200	89.58%
Ernest Everett Just Middle	775	824	94.05%
G. James Gholson Middle	749	870	86.09%
Gwynn Park Middle	727	765	95.03%
James Madison Middle	839	850	98.71%
Kenmoor Middle	914	1,200	76.17%
Kettering Middle	913	985	92.69%
Samuel Ogle Middle	783	935	83.74%
Stephen Decatur Middle	733	901	81.35%
Thurgood Marshall Middle	731	923	79.20%
Walker Mill Middle	1,049	1,200	87.42%
<b>Total Cluster Area 4</b>	<b>10,346</b>	<b>11,693</b>	<b>88.48%</b>

**Table 19.** Cluster Area 4 High Schools

High Schools	September 30, 2023 Enrollment	State Rated Capacity	Building Utilization*
Bowie High	2,534	2,772	91.41%
Charles Herbert Flowers High	2,779	2,174	127.83%
Dr. Henry A. Wise, Jr. High	2,270	2,518	90.15%
Largo High	1,033	1,365	75.68%
<b>Total Cluster Area 4</b>	<b>8,616</b>	<b>8,829</b>	<b>97.59%</b>

Source: Prince George's County Public Schools

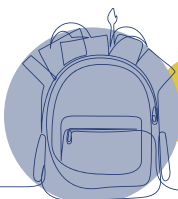
\*Building Utilization is the percentage of the Adjusted Enrollment to the State Rated Capacity.



# Cluster Area 5

**Table 20.** Cluster Area 5 Schools Feeder Pattern

High School	Middle School	Elementary School	
Crossland High	Benjamin Stoddert Middle	Barnaby Manor Elementary	
		Hillcrest Heights Elementary	
	Drew-Freeman Middle	Panorama Elementary	
		Bradbury Heights Elementary	
Thurgood Marshall Middle	Thurgood Marshall Middle	Concord Elementary	
		District Heights Elementary	
		Francis Scott Key Elementary	
Oxon Hill High	Oxon Hill Middle	Longfields Elementary	
		Suitland Elementary	
		William Beanes Elementary	
		Allenwood Elementary	
		Avalon Elementary	
	Thurgood Marshall Middle	Thurgood Marshall Middle	Hillcrest Heights Elementary
			J. Frank Dent Elementary
			Princeton Elementary
			Samuel Chase Elementary
			Valley View Elementary
Oxon Hill High	Oxon Hill Middle	Apple Grove Elementary	
		Flintstone Elementary	
		Forest Heights Elementary	
		Fort Foote Elementary	
		Glassmanor Elementary	
	Thurgood Marshall Middle	Thurgood Marshall Middle	Indian Queen Elementary
			Oxon Hill Elementary
			Valley View Elementary
			Allenwood Elementary
			Avalon Elementary
Thurgood Marshall Middle	Thurgood Marshall Middle	Hillcrest Heights Elementary	
		J. Frank Dent Elementary	
		Princeton Elementary	
		Samuel Chase Elementary	
		Valley View Elementary	





**Table 20.** Cluster Area 5 Schools Feeder Pattern (continued)

High School	Middle School	Elementary School
Potomac High	Benjamin Stoddert Middle	Barnaby Manor Elementary Hillcrest Heights Elementary Panorama Elementary
	Oxon Hill Middle	Apple Grove Elementary Flintstone Elementary Forest Heights Elementary Fort Foote Elementary Glassmanor Elementary Indian Queen Elementary Oxon Hill Elementary Valley View Elementary
	Thurgood Marshall Middle	Allenwood Elementary Avalon Elementary Hillcrest Heights Elementary J. Frank Dent Elementary Princeton Elementary Samuel Chase Elementary Valley View Elementary

Source: Prince George's County Public Schools

# Cluster Area 5



**Table 21.** Cluster Area 5 Elementary Schools

Elementary Schools	September 30, 2023 Enrollment	State Rated Capacity	Building Utilization*
Allenwood Elementary	333	455	73.19%
Apple Grove Elementary	323	541	59.70%
Avalon Elementary	302	435	69.43%
Barnaby Manor Elementary	436	574	75.96%
Bradbury Heights Elementary	378	782	48.34%
Concord Elementary	204	451	45.23%
District Heights Elementary	351	515	68.16%
Flintstone Elementary	380	451	84.26%
Forest Heights Elementary	214	314	68.15%
Fort Foote Elementary	281	451	62.31%
Francis Scott Key Elementary	419	677	61.89%
Glassmanor Elementary	276	335	82.39%
Hillcrest Heights Elementary	394	703	56.05%
Indian Queen Elementary	246	549	44.81%
J. Frank Dent Elementary	216	365	59.18%
Longfields Elementary	264	474	55.70%
Oxon Hill Elementary	224	423	52.96%
Panorama Elementary	562	691	81.33%
Princeton Elementary	299	448	66.74%
Samuel Chase Elementary	295	383	77.02%
Suitland Elementary	466	702	66.38%
Valley View Elementary	352	541	65.06%
William Beanes Elementary	379	560	67.68%
<b>Total Cluster Area 5</b>	<b>7,594</b>	<b>11,820</b>	<b>64.25%</b>

**Table 22.** Cluster Area 5 Middle Schools

Middle Schools	September 30, 2023 Enrollment	State Rated Capacity	Building Utilization*
Benjamin Stoddert Middle	599	774	77.39%
Drew-Freeman Middle	1,075	1,200	89.58%
Oxon Hill Middle	867	783	110.73%
Thurgood Marshall Middle	731	923	79.20%
<b>Total Cluster Area 5</b>	<b>3,272</b>	<b>3,680</b>	<b>88.91%</b>

**Table 23.** Cluster Area 5 High Schools

High Schools	September 30, 2023 Enrollment	State Rated Capacity	Building Utilization*
Crossland High	1,202	1,775	67.72%
Oxon Hill High	1,581	1,360	116.25%
Potomac High	1,183	1,915	61.78%
<b>Total Cluster Area 5</b>	<b>3,966</b>	<b>5,050</b>	<b>78.53%</b>

Source: Prince George's County Public Schools

\*Building Utilization is the percentage of the Adjusted Enrollment to the State Rated Capacity.

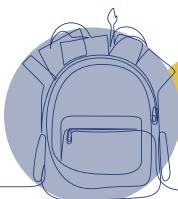






PHOTO: M-NOPPC

Academies are schools that enroll students from pre-K or K through eighth grade. Planning Department staff include academies in the Cluster Area Schools Feeder Pattern charts. Unlike typical elementary and middle schools, data tables for enrollment, state-rated capacity, and utilization rates for those academies are shown in **Appendix C**.



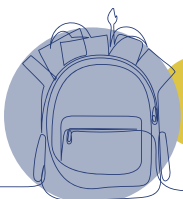
# Cluster Area 6

**Table 24.** Cluster Area 6 Schools Feeder Pattern

High School	Middle School	Elementary School
Frederick Douglass High	Gwynn Park Middle	Baden Elementary Brandywine Elementary Fort Washington Forest Elementary Marlton Elementary Mattaponi Elementary Rosaryville Elementary
	James Madison Middle	Barack Obama Elementary Melwood Elementary Patuxent Elementary Rosaryville Elementary
Friendly High	Accokeek Academy	Fort Washington Forest Elementary Potomac Landing Elementary**
	Isaac J. Gourdine Middle*	Apple Grove Elementary Rose Valley Elementary Tayac Elementary
Gwynn Park High	Accokeek Academy	Fort Washington Forest Elementary Potomac Landing Elementary**
	Gwynn Park Middle	Baden Elementary Brandywine Elementary Fort Washington Forest Elementary Marlton Elementary Mattaponi Elementary Rosaryville Elementary
	Stephen Decatur Middle	Clinton Grove Elementary Francis T. Evans Elementary James Ryder Randall Elementary Waldon Woods Elementary
Surrattsville High	Stephen Decatur Middle	Clinton Grove Elementary Francis T. Evans Elementary James Ryder Randall Elementary Waldon Woods Elementary

Source: Prince George's County Public Schools

\*This school is permanently closed. The new Colin L. Powell Academy now serves the students of the consolidated Issac J. Gourdine Middle and Potomac Landing Elementary Schools.



**Table 25.** Cluster Area 6 Elementary Schools

Elementary Schools	September 30, 2023 Enrollment	State Rated Capacity	Building Utilization*
Apple Grove Elementary	323	541	59.70%
Baden Elementary	187	337	55.49%
Barack Obama Elementary	640	834	76.74%
Brandywine Elementary	573	477	120.13%
Clinton Grove Elementary	299	426	70.19%
Fort Washington Forest Elementary	391	434	90.09%
Francis T. Evans Elementary	403	454	88.77%
James Ryder Randall Elementary	284	441	64.40%
Marlton Elementary	309	489	63.19%
Mattaponi Elementary	368	458	80.35%
Melwood Elementary	501	633	79.15%
Patuxent Elementary	284	451	62.97%
Rosaryville Elementary	508	783	64.88%
Rose Valley Elementary	366	428	85.51%
Tayac Elementary	345	545	63.30%
Waldon Woods Elementary	566	568	99.65%
<b>Total Cluster Area 6</b>	<b>6,347</b>	<b>8,299</b>	<b>76.48%</b>

**Table 26.** Cluster Area 6 Middle Schools

Middle Schools	September 30, 2023 Enrollment	State Rated Capacity	Building Utilization*
Gwynn Park Middle	727	765	95.03%
James Madison Middle	839	850	98.71%
Stephen Decatur Middle	733	901	81.35%
<b>Total Cluster Area 6</b>	<b>2,299</b>	<b>2,516</b>	<b>91.38%</b>

**Table 27.** Cluster Area 6 High Schools

High Schools	September 30, 2023 Enrollment	State Rated Capacity	Building Utilization*
Frederick Douglass High	1,182	1,410	83.83%
Friendly High	943	1,351	69.80%
Gwynn Park High	1,155	1,208	95.61%
Surrattsville High	780	1,237	63.06%
<b>Total Cluster Area 6</b>	<b>4,060</b>	<b>5,206</b>	<b>77.99%</b>

Source: Prince George's County Public Schools

\*Building Utilization is the percentage of the Adjusted Enrollment to the State Rated Capacity.



PHOTO: M-NOPPC

## School Overcrowding Conditions

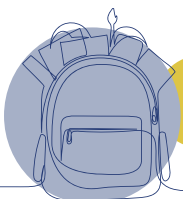
**Maps 2, 3, and 4** demonstrate the school utilization rates by school type and individual school district. These three maps provide meaningful indicators of where overcrowding conditions exist within Prince George's County.

Because it encompasses pre-K or K through the 8th grade, an academy might be featured on elementary and middle school maps displaying utilization rates.

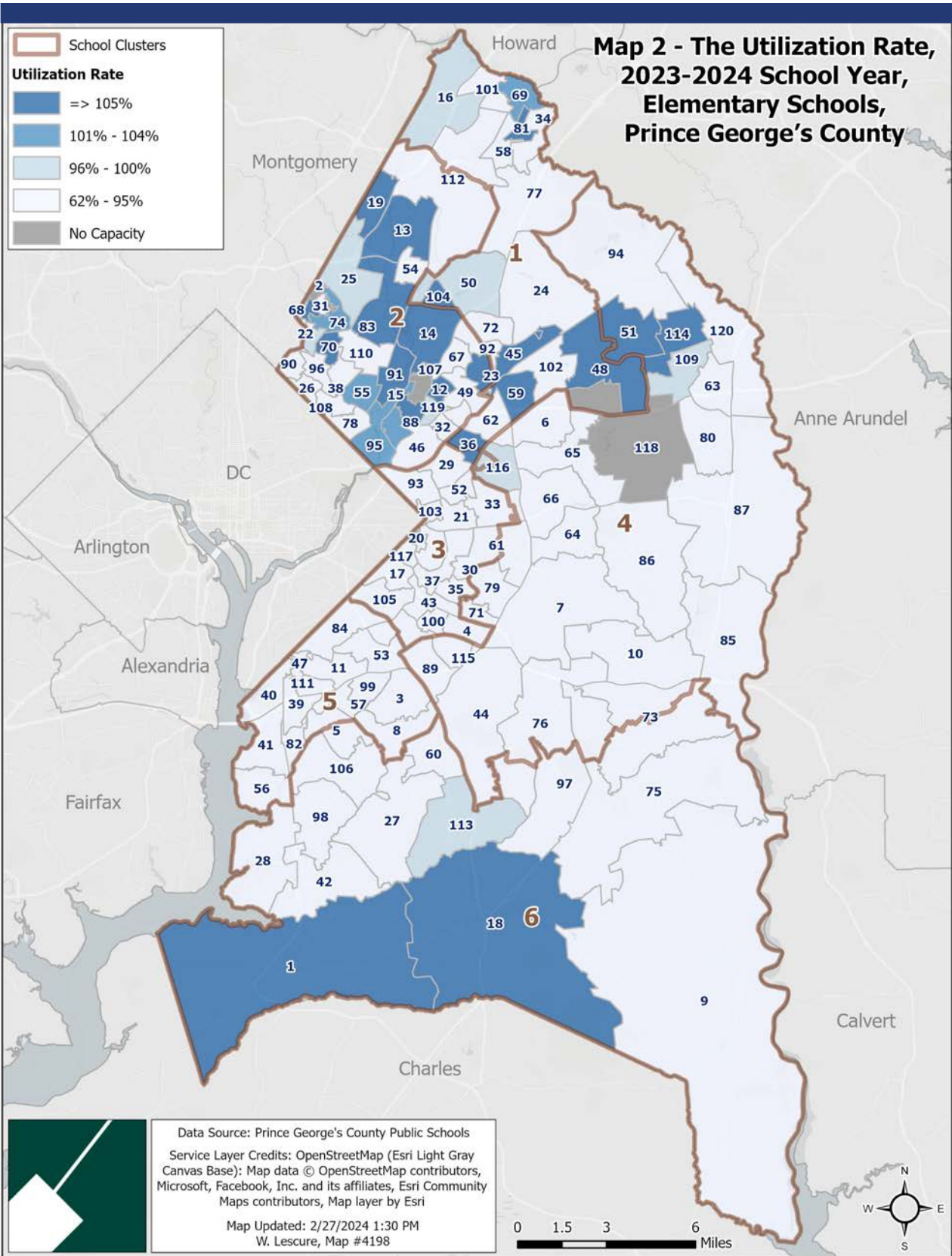
Overall, school enrollment in the northern quadrant of the County, regardless of type, is equal to or exceeds 105

percent of the state-rated capacity (or utilization rate). For elementary and middle schools, the utilization rate also appears high in the southern part of the County. The Planning Department and PGCPD collaborate on alleviating overcrowding through capital improvement programs that provide new schools or additional seats.

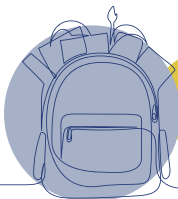
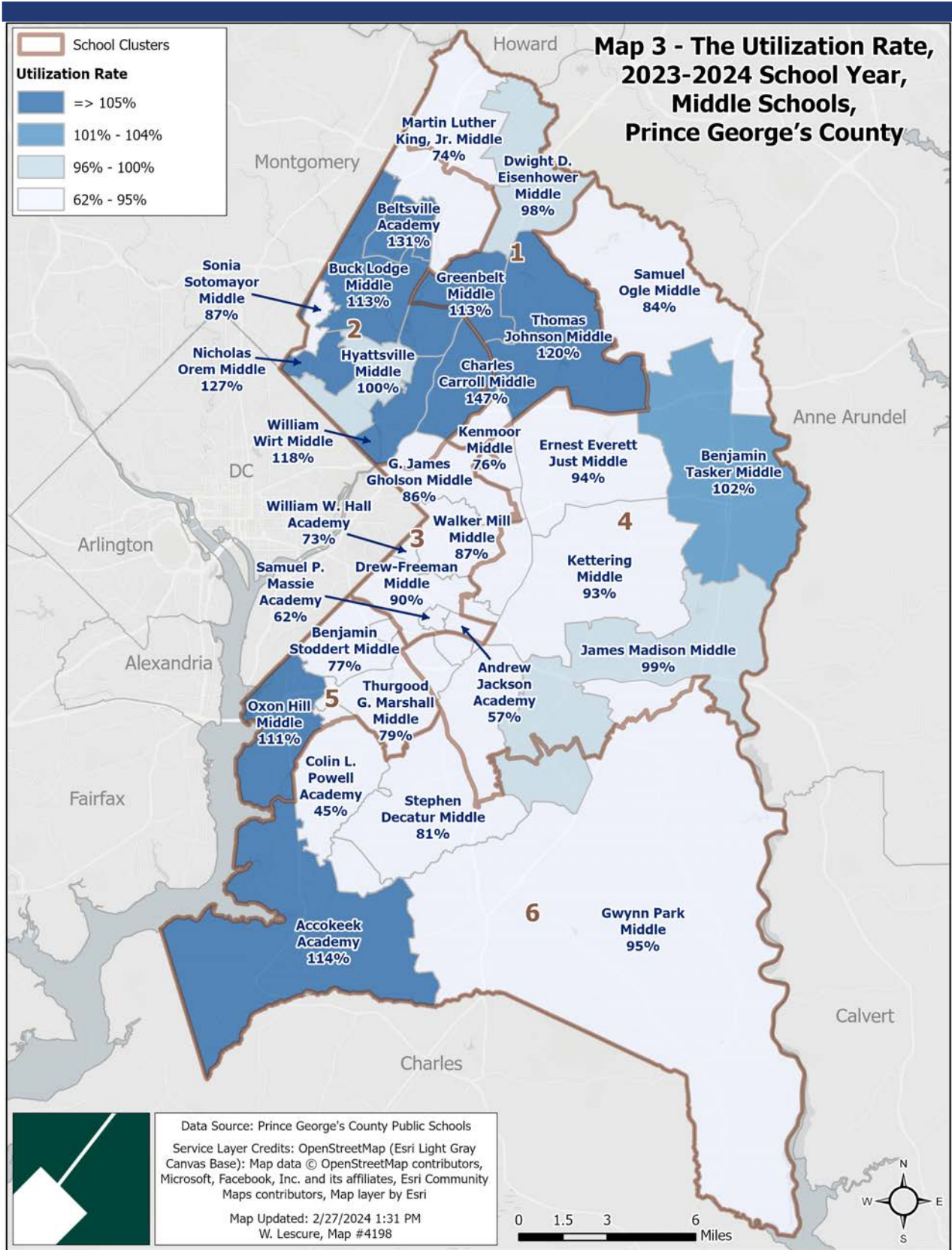
Detailed data for the elementary school map are included in **Appendix C** due to the school district's size and number of elementary schools in the County.



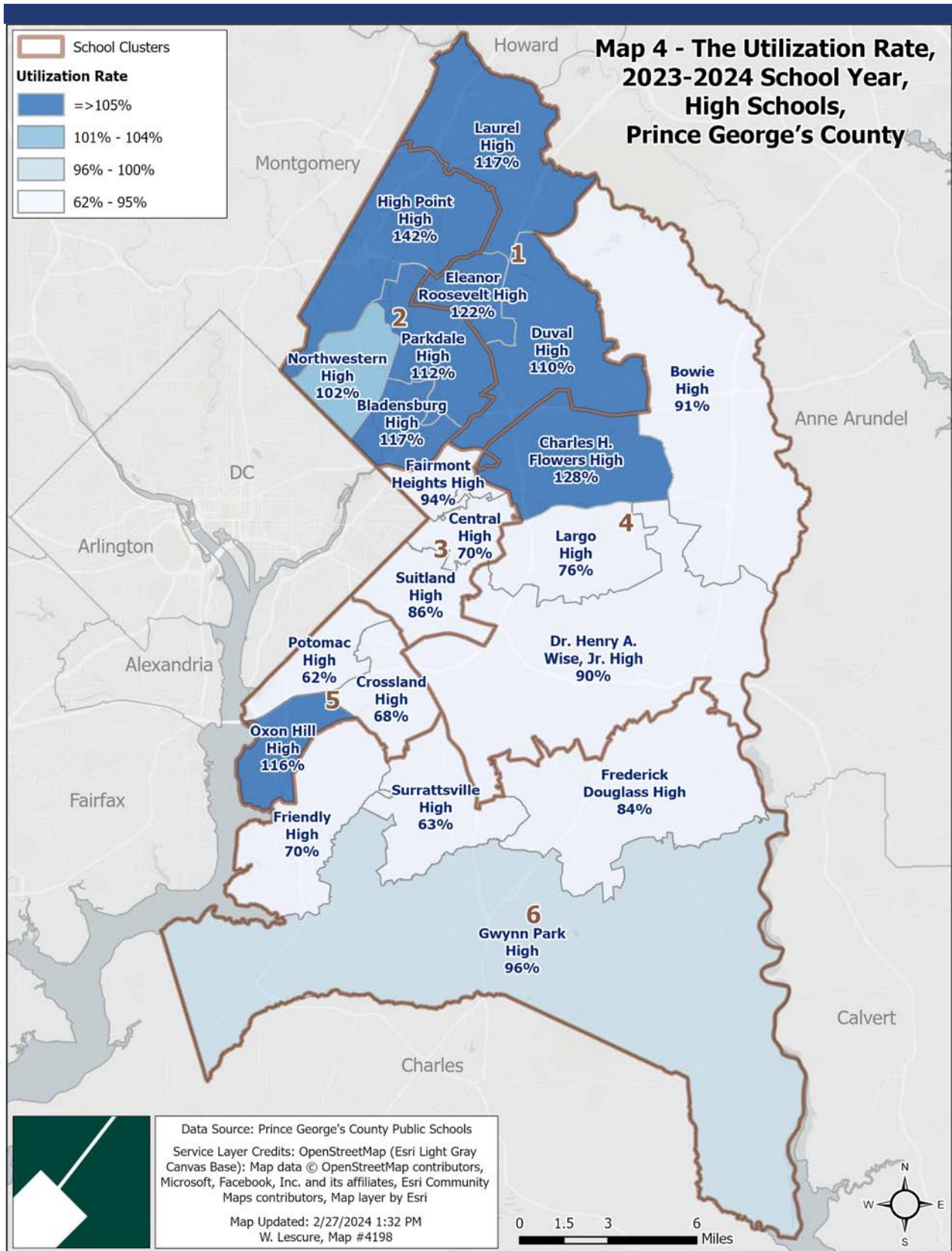
**Map 2. Elementary School Utilization in Prince George's County**



Map 3. Middle School Utilization in Prince George's County



**Map 4.** High School Utilization in Prince George's County







A graphic for the Appendix title. It features a dark blue rectangle with a yellow border. On the left side of the rectangle, there is a white triangle pointing right, containing a stylized image of a map with blue lines. The word "Appendix" is written in white, sans-serif font in the center of the blue area.

# Appendix

- A.** Public School Enrollment
- B.** Adopted Subdivision Regulations
- C.** Elementary School Map Index

# Appendix A. SY 2023-2024 Official Enrollment

Table 28. September 30th, 2023 Prince George's County Public Schools Enrollment

School	School Type	Pre-K	K	1st Grade	2nd Grade	3rd Grade	4th Grade	5th Grade	6th Grade	7th Grade	8th Grade	9th Grade	10th Grade	11th Grade	12th Grade	Total	Total (adjusted for half-day 3 year-olds)	State Rated Capacity (**Design Capacity)	*Seats Available	*Building Utilization	Board of Education District	Council District	Legislative District	Region
Academy Of Health Sciences At PGCC	HS	-	-	-	-	-	-	-	-	-	-	93	129	100	85	407	407	-	-	-	6	6	25	Central
Accokeek Academy	PK-8	-	118	117	156	142	145	146	216	308	274	-	-	-	-	1,622	1,622	1,428	(194)	114%	9	9	26	South
Adelphi Elementary	ES	38	72	89	66	69	62	81	-	-	-	-	-	-	-	477	477	-	-	-	3	2	47B	North
Allenwood Elementary	ES	18	62	49	58	45	54	47	-	-	-	-	-	-	-	333	333	455	122	73%	8	8	26	South
Andrew Jackson Academy	PK-8	18	52	42	50	43	50	51	42	43	63	-	-	-	-	454	454	793	339	57%	7	7	25	South
Apple Grove Elementary	ES	23	45	34	49	58	57	57	-	-	-	-	-	-	-	323	323	541	218	60%	8	8	26	South
Ardmore Elementary	ES	32	72	72	73	66	69	82	-	-	-	-	-	-	-	466	466	523	57	89%	4	5	24	Central
Arrowhead Elementary	ES	34	64	49	45	77	64	73	-	-	-	-	-	-	-	406	406	434	28	94%	7	6	25	Central
Avalon Elementary	ES	20	57	47	49	53	36	40	-	-	-	-	-	-	-	302	302	435	133	69%	8	8	26	South
Baden Elementary	ES	40	17	20	31	30	24	25	-	-	-	-	-	-	-	187	187	337	150	55%	9	9	27B	South
Barack Obama Elementary	ES	38	96	93	84	106	104	119	-	-	-	-	-	-	-	640	640	834	194	77%	7	6	25	Central
Barnaby Manor Elementary	ES	26	65	79	73	63	63	67	-	-	-	-	-	-	-	436	436	574	138	76%	8	8	26	South
Beacon Heights Elementary	ES	29	37	49	51	53	63	56	67	-	-	-	-	-	-	405	405	362	(43)	112%	4	3	22	North
Beltsville Academy	PK-8	40	122	110	122	118	123	115	124	116	119	-	-	-	-	1,109	1,109	848	(261)	131%	1	1	21	North
Benjamin D. Foulis Academy	K-8	-	48	47	50	51	51	50	79	74	81	-	-	-	-	531	531	758	227	70%	7	7	25	South
Benjamin Stoddert Middle	MS	-	-	-	-	-	-	-	211	197	191	-	-	-	-	599	599	774	175	77%	7	7	25	South
Benjamin Tasker Middle	MS	-	-	-	-	-	-	-	324	347	387	-	-	-	-	1,058	1,058	1,040	(18)	102%	5	4	23	Central
Berwyn Heights Elementary	ES	-	63	78	59	84	64	56	73	-	-	-	-	-	-	477	477	429	(48)	111%	2	3	22	North
Bladensburg Elementary	ES	40	106	91	104	95	96	89	91	-	-	-	-	-	-	712	712	698	(14)	102%	4	5	47A	North
Bladensburg High	HS	-	-	-	-	-	-	-	-	-	-	734	579	452	330	2,095	2,095	1,785	(310)	117%	4	5	47A	North
Bond Mill Elementary	ES	-	74	68	88	73	82	83	-	-	-	-	-	-	-	468	468	479	11	98%	1	1	21	North
Bowie High	HS	-	-	-	-	-	-	-	-	-	-	689	677	605	563	2,534	2,534	2,772	238	91%	5	4	23	Central
Bradbury Heights Elementary	ES	40	40	65	67	47	64	55	-	-	-	-	-	-	-	378	378	782	404	48%	7	7	24	Central
Brandywine Elementary	ES	-	93	97	93	96	97	97	-	-	-	-	-	-	-	573	573	477	(96)	120%	9	9	27B	South
Buck Lodge Middle	MS	-	-	-	-	-	-	-	390	401	363	-	-	-	-	1,154	1,154	1,017	(137)	113%	3	2	47B	North
C Elizabeth Rieg	K-12	-	12	17	8	7	7	10	11	12	11	11	8	25	3	142	142	130	(12)	109%	5	4	23	Central
Calverton Elementary	ES	20	109	136	133	123	136	142	-	-	-	-	-	-	-	799	799	589	(210)	136%	1	1	21	North
Capital Heights Elementary	ES	9	24	28	61	52	71	56	-	-	-	-	-	-	-	301	301	363	62	83%	6	7	24	Central
Carmody Hills Elementary	ES	37	61	58	59	63	67	51	-	-	-	-	-	-	-	396	396	451	55	88%	6	7	24	Central
Carole Highlands Elementary	ES	38	90	71	96	80	84	76	-	-	-	-	-	-	-	535	535	535	-	100%	3	2	47B	North
Carrollton Elementary	ES	40	87	90	89	89	93	103	-	-	-	-	-	-	-	591	591	559	(32)	106%	2	3	22	North
Catherine T. Reed Elementary	ES	19	74	71	73	61	70	67	-	-	-	-	-	-	-	435	435	457	22	95%	1	4	22	North
Central High	HS	-	-	-	-	-	-	-	-	-	-	242	241	177	143	803	803	1,143	340	70%	6	6	25	Central
Cesar Chavez Elementary	ES	-	80	72	66	59	44	50	-	-	-	-	-	-	-	371	371	357	(14)	104%	3	2	47A	North
Chapel Forge EOC	PK	215	-	-	-	-	-	-	-	-	-	-	-	-	-	1,200	1,200	260	81	69%	5	4	23	Central
Charles Carroll Middle	MS	-	-	-	-	-	-	-	185	503	512	-	-	-	-	1,200	1,200	817	(383)	147%	2	3	22	North

**Table 28. September 30th, 2023 Prince George's County Public Schools Enrollment**

School	School Type	Pre-K	K	1st Grade	2nd Grade	3rd Grade	4th Grade	5th Grade	6th Grade	7th Grade	8th Grade	9th Grade	10th Grade	11th Grade	12th Grade	Total	Total (adjusted for half-day 3 year-olds)	State Rated Capacity (**Design Capacity)	*Seats Available	*Building Utilization	Board of Education District	Council District	Legislative District	Region
Charles Herbert Flowers High	HS	-	-	-	-	-	-	-	-	-	-	878	651	628	622	2,779	2,779	2,174	(605)	128%	4	5	24	Central
Cherokee Lane Elementary	ES	40	140	139	136	131	116	114	-	-	-	-	-	-	-	816	816	822	6	99%	3	2	47B	North
Chesapeake Math And It Public Charter	Charter	-	97	101	102	99	103	105	165	161	162	157	155	147	132	1,686	1,686	-	-	-	1	1	21	North
Chesapeake Math And IT South Public Charter	Charter	-	100	100	99	100	101	103	159	160	156	132	118	89	83	1,500	1,500	-	-	-	9	9	25	Central
Chillum Elementary	ES	37	35	54	49	32	49	49	-	-	-	-	-	-	-	305	305	335	30	91%	3	2	47A	North
Clinton Grove Elementary	ES	36	54	38	39	47	40	45	-	-	-	-	-	-	-	299	299	426	127	70%	9	9	25	South
Colin L. Powell Academy	PK-8	18	47	53	53	56	51	55	220	174	171	-	-	-	-	898	898	2,000	1,102	45%	8	8	26	South
College Park Academy	Charter	-	-	-	-	-	-	-	118	117	116	87	88	81	74	681	681	-	-	-	2	3	22	North
Columbia Park Elementary	ES	30	74	61	73	53	61	61	-	-	-	-	-	-	-	413	413	515	102	80%	4	5	47A	Central
Concord Elementary	ES	19	31	32	31	23	30	38	-	-	-	-	-	-	-	204	204	451	247	45%	6	7	24	Central
Cool Spring Elementary	ES	40	74	72	87	68	86	73	-	-	-	-	-	-	-	500	500	535	35	93%	3	2	47B	North
Cooper Lane Elementary	ES	23	76	64	48	68	49	72	71	-	-	-	-	-	-	471	471	494	23	95%	4	5	47A	North
Cora L Rice Elementary	ES	98	68	72	69	82	71	83	-	-	-	486	303	229	184	543	528	696	168	76%	6	5	24	Central
Crossland High	HS	-	-	-	-	-	-	-	-	-	-	-	-	-	-	1,202	1,202	1,775	573	68%	8	8	26	South
Deerfield Run Elementary	ES	19	80	74	90	78	82	89	-	-	-	-	-	-	-	512	512	570	58	90%	1	1	23	North
District Heights Elementary	ES	21	58	51	51	64	54	52	-	-	-	-	-	-	-	351	351	515	164	68%	7	7	25	Central
Dodge Park Elementary	ES	37	83	70	83	69	67	72	73	-	-	-	-	-	-	554	554	511	(43)	108%	4	5	22	Central
Dora Kennedy French Immersion	K-8	-	97	100	92	72	63	72	66	56	62	-	-	-	-	680	680	-	-	-	2	4	22	North
Doswell E Brooks Elementary	ES	28	21	40	26	38	26	26	-	-	-	-	-	-	-	205	202	523	321	39%	6	7	24	Central
Dr Henry A Wise, Jr. High	HS	-	-	-	-	-	-	-	-	-	-	684	614	485	487	2,270	2,270	2,518	248	90%	7	6	25	Central
Drew-Freeman Middle	MS	-	-	-	-	-	-	-	359	358	358	-	-	-	-	1,075	1,075	1,200**	125	90%	7	7	24	South
DuVal High	HS	-	-	-	-	-	-	-	-	-	-	880	627	516	481	2,484	2,484	2,258	(226)	110%	1	4	22	North
Dwight D Eisenhower Middle	MS	-	-	-	-	-	-	-	328	355	350	-	-	-	-	1,033	1,033	1,049	16	98%	1	1	21	North
Edward M Feleegy Elementary	ES	48	95	111	118	90	93	101	-	-	-	-	-	-	-	656	656	879	223	75%	3	2	22	North
Eleanor Roosevelt High	HS	-	-	-	-	-	-	-	-	-	-	762	652	579	564	2,557	2,557	2,096	(461)	122%	2	4	22	North
Ernest Everett Just Middle	MS	-	-	-	-	-	-	-	234	251	290	-	-	-	-	775	775	824	49	94%	6	6	24	Central
Excel Academy Public Charter	Charter	-	45	48	46	51	49	49	76	44	29	-	-	-	-	437	437	-	-	-	4	8	26	Central
Fairmont Heights High	HS	-	-	-	-	-	-	-	-	-	-	337	264	257	196	1,054	1,054	1,123	69	94%	4	5	47A	Central
Flintstone Elementary	ES	20	53	66	53	66	61	61	-	-	-	-	-	-	-	380	380	451	71	84%	8	8	26	South
Forest Heights Elementary	ES	28	29	38	33	28	31	27	-	-	-	-	-	-	-	214	214	314	100	68%	8	8	26	South
Fort Foote Elementary	ES	17	42	47	49	45	38	43	-	-	-	-	-	-	-	281	281	451	170	62%	8	8	26	South
Fort Washington Forest Elem	ES	34	63	49	51	56	45	39	54	-	-	-	-	-	-	391	391	434	43	90%	9	9	26	South
Frances R Puchs ECC	PK	327	-	-	-	-	-	-	-	-	-	-	-	-	-	327	258	260	2	99%	1	1	21	North
Francis Scott Key Elementary	ES	37	49	70	58	74	54	77	-	-	-	-	-	-	-	419	419	677	258	62%	6	7	24	Central
Francis T Evans Elementary	ES	36	77	54	54	63	54	65	-	-	-	-	-	-	-	403	403	454	51	89%	9	8	25	South
Frederick Douglass High	HS	-	-	-	-	-	-	-	-	-	-	342	275	312	253	1,182	1,182	1,410	228	84%	9	9	23	South

**Table 28. September 30th, 2023 Prince Georges's County Public Schools Enrollment**

School	School Type	Pre-K	K	1st Grade	2nd Grade	3rd Grade	4th Grade	5th Grade	6th Grade	7th Grade	8th Grade	9th Grade	10th Grade	11th Grade	12th Grade	Total	Total (adjusted for half-day 3 year-olds)	State Rated Capacity (**Design Capacity)	*Seats Available	*Building Utilization	Board of Education District	Council District	Legislative District	Region	
Friendly High	HS	-	-	-	-	-	-	-	-	-	-	277	261	219	186	943	943	1,351	408	70%	8	9	26	South	
G. James Gholson Middle	MS	-	-	-	-	-	-	-	203	262	284	-	-	-	-	749	749	870	121	86%	6	5	24	Central	
Gaywood Elementary	ES	40	64	81	81	73	90	77	-	-	-	-	-	-	-	506	506	386	(120)	131%	4	3	22	North	
Gladys Noon Spellman Elementary	ES	19	75	69	76	58	63	66	71	-	-	-	-	-	-	497	497	564	67	88%	4	5	47A	North	
Glassmanor Elementary	ES	-	47	56	44	40	42	47	-	-	-	-	-	-	-	276	276	335	59	82%	8	8	26	South	
Glenarden Woods Elementary	ES	-	-	122	125	124	125	-	-	-	-	-	-	-	-	496	496	460	(36)	108%	4	5	24	Central	
Glenn Dale Elementary	ES	36	92	106	117	85	117	108	99	-	-	-	-	-	-	760	760	828	68	92%	4	4	24	Central	
Greenbelt Day Care Center	PK	6	-	-	-	-	-	-	-	-	-	-	-	-	-	6	6	-	-	-	-	-	-	North	
Greenbelt Elementary	ES	13	71	92	105	75	91	96	-	-	-	-	-	-	-	543	543	568	25	96%	2	4	22	North	
Greenbelt Middle	MS	-	-	-	-	-	-	-	379	426	437	-	-	-	-	1,242	1,242	1,101	(141)	113%	2	4	22	North	
Gwynn Park High	HS	-	-	-	-	-	-	-	-	-	-	350	272	270	263	1,155	1,155	1,208	53	96%	9	9	27B	South	
Gwynn Park Middle	MS	-	-	-	-	-	-	-	217	249	261	-	-	-	-	727	727	765	38	95%	9	9	27B	South	
H. Winship Wheatley ECC	PK	310	-	-	-	-	-	-	-	-	-	-	-	-	-	310	249	420	171	59%	6	6	25	Central	
Heather Hills Elementary	ES	-	-	90	77	98	99	-	-	-	-	-	-	-	-	364	364	368	4	99%	5	4	23	Central	
High Bridge Elementary	ES	-	75	71	60	57	62	79	-	-	-	-	-	-	-	404	404	371	(33)	109%	5	4	24	Central	
High Point High	HS	-	-	-	-	-	-	-	-	-	-	1,070	779	657	454	2,960	2,960	2,081	(879)	142%	1	1	21	North	
Highland Park Elementary	ES	14	39	36	34	49	37	34	-	-	-	-	-	-	-	243	243	574	331	42%	6	7	24	Central	
Hillcrest Heights Elementary	ES	31	56	71	59	47	63	67	-	-	-	-	-	-	-	394	394	703	309	56%	8	7	25	South	
Hollywood Elementary	ES	18	44	46	60	42	44	47	-	-	-	-	-	-	-	301	301	339	38	89%	2	1	21	North	
Hyattsville Elementary	ES	39	74	70	65	67	63	43	-	-	-	-	-	-	-	421	421	406	(15)	104%	3	2	22	North	
Hyattsville Middle	MS	-	-	-	-	-	-	-	422	403	369	-	-	-	-	1,194	1,194	1,200**	6	100%	3	2	22	North	
Imagine Andrews Public Charter	Charter	-	39	43	40	44	48	35	39	55	42	-	-	-	-	385	385	-	-	-	-	9	8	25	South
Imagine Foundations At Leeland PCS	Charter	-	45	51	49	54	52	54	62	56	62	-	-	-	-	485	485	-	-	-	-	5	6	25	Central
Imagine Foundations At Morningside PCS	Charter	-	35	43	43	36	40	36	45	44	39	-	-	-	-	361	361	365	4	99%	7	7	25	South	
Imagine Lincoln PCS	Charter	-	21	37	32	42	44	43	39	50	37	-	-	-	-	345	345	-	-	-	-	7	7	25	South
Incarcerated Youth Center (IACS) Alternative	Alternative	-	-	-	-	-	-	-	-	-	-	5	2	3	5	15	15	-	-	-	-	7	6	25	Central
Indian Queen Elementary	ES	18	39	37	41	33	36	42	-	-	-	-	-	-	-	246	246	549	303	45%	8	8	26	South	
International High School @ Langley Park	HS	-	-	-	-	-	-	-	-	-	-	191	13	75	68	347	347	447	100	78%	4	5	47A	North	
International High School @ Largo	HS	-	-	-	-	-	-	-	-	-	-	182	25	81	74	362	362	363	1	100%	6	6	25	Central	
J Frank Dent Elementary	ES	19	32	29	43	28	39	26	-	-	-	-	-	-	-	216	216	365	149	59%	8	8	25	South	
James E Duckworth	SPED	-	6	4	10	11	12	11	-	-	-	4	6	21	3	88	88	120	32	73%	1	1	21	North	
James H Harrison Elementary	ES	19	37	52	59	47	42	45	-	-	-	-	-	-	-	301	301	343	42	88%	1	1	23	North	
James Madison Middle	MS	-	-	-	-	-	-	-	283	282	274	-	-	-	-	839	839	850	11	99%	9	9	23	South	
James McHenry Elementary	ES	40	96	123	99	115	101	102	-	-	-	-	-	-	-	676	676	537	(139)	126%	4	5	24	Central	
James Rydler Randall ECC	PK	158	-	-	-	-	-	-	-	-	-	-	-	-	-	158	125	-	-	-	-	8	9	25	South

**Table 28. September 30th, 2023 Prince George's County Public Schools Enrollment**

School	School Type	Pre-K	K	1st Grade	2nd Grade	3rd Grade	4th Grade	5th Grade	6th Grade	7th Grade	8th Grade	9th Grade	10th Grade	11th Grade	12th Grade	Total	Total (adjusted for half-day 3 year-olds)	State Rated Capacity (**Design Capacity)	*Seats Available	*Building Utilization	Board of Education District	Council District	Legislative District	Region
James Ryder Randall Elementary	ES	-	50	52	44	46	48	44	-	-	-	-	-	-	-	284	284	441	157	64%	8	9	25	South
John H Bayne Elementary	ES	33	47	49	40	50	51	-	-	-	-	-	-	-	-	310	310	542	232	57%	6	6	25	Central
John Hanson Montessori	PK-8	113	51	45	46	35	54	37	34	36	31	-	-	-	-	482	456	902	446	51%	8	8	26	South
Judge Sylvia W. Woods, Sr. Elem	ES	40	76	79	86	98	79	83	90	-	-	-	-	-	-	631	631	719	88	88%	4	5	22	Central
Judith P. Hojer Montessori	PK-8	86	38	34	42	29	34	27	25	28	21	-	-	-	-	364	345	439	94	78%	6	5	24	Central
Kenilworth Elementary	ES	-	60	65	73	58	67	61	-	-	-	-	-	-	-	384	384	448	64	86%	5	4	23	Central
Kenmoor ECC	PK	230	-	-	-	-	-	-	-	-	-	-	-	-	-	230	179	250	71	72%	4	5	24	Central
Kenmoor Middle	MS	-	-	-	-	-	-	231	346	337	-	-	-	-	-	914	914	1,200**	286	76%	4	5	24	Central
Kettering Elementary	ES	30	58	72	64	56	57	66	-	-	-	-	-	-	-	403	403	589	186	68%	6	6	25	Central
Kettering Middle	MS	-	-	-	-	-	-	253	306	324	-	-	-	-	-	913	913	985	72	93%	6	6	25	Central
Kingsford Elementary	ES	32	67	60	67	75	77	87	-	-	-	-	-	-	-	465	465	750	285	62%	5	6	24	Central
Lake Arbor Elementary	ES	35	97	87	103	92	75	66	-	-	-	-	-	-	-	555	555	796	241	70%	6	6	24	Central
Lamont Elementary	ES	40	72	81	66	68	58	76	-	-	-	-	-	-	-	461	461	503	42	92%	2	3	22	North
Langlely Pk. McCormick Elementary	ES	40	105	136	119	80	122	94	-	-	-	-	-	-	-	696	696	486	(210)	143%	3	2	47B	North
Largo High	HS	-	-	-	-	-	-	-	-	-	-	382	269	191	191	1,033	1,033	1,365	332	76%	6	6	25	Central
Laurel Elementary	ES	36	84	83	74	69	87	65	-	-	-	-	-	-	-	498	498	493	(5)	101%	1	1	21	North
Laurel High	HS	-	-	-	-	-	-	-	-	-	-	819	558	408	394	2,179	2,179	1,867	(312)	117%	1	1	21	North
Legends Public Charter School	Charter	-	102	102	99	98	102	100	97	99	94	-	-	-	-	893	893	-	-	-	4	5	24	Central
Lewisdale Elementary	ES	35	94	84	101	73	81	97	-	-	-	-	-	-	-	565	565	471	(94)	120%	3	2	47B	North
Longfields Elementary	ES	15	20	32	47	43	58	49	-	-	-	-	-	-	-	264	264	474	210	56%	7	6	25	Central
Magnolia Elementary	ES	19	64	67	56	58	69	64	-	-	-	-	-	-	-	397	397	449	52	88%	2	3	22	North
Marlton Elementary	ES	38	47	40	42	50	45	47	-	-	-	-	-	-	-	309	309	489	180	63%	9	9	23	South
Martin Luther King, Jr. Middle	MS	-	-	-	-	-	-	-	209	191	228	-	-	-	-	628	628	850	222	74%	1	1	21	North
Mary Harris "Mother" Jones Elem	ES	40	137	134	130	112	108	121	-	-	-	-	-	-	-	782	782	769	(13)	102%	3	2	21	North
Mattaponi Elementary	ES	-	53	53	67	60	72	63	-	-	-	-	-	-	-	368	368	458	90	80%	9	9	23	South
Maya Angelou French Immersion	K-8	-	53	32	43	53	41	36	38	39	38	-	-	-	-	373	373	670	297	56%	8	7	26	South
Melwood Elementary	ES	-	77	66	69	67	71	91	-	-	-	-	-	-	-	501	501	633	132	79%	9	9	23	South
Montpelier Elementary	ES	40	94	92	80	95	94	76	-	-	-	-	-	-	-	571	571	609	38	94%	1	1	23	North
Mt. Rainier Elementary	ES	24	57	44	45	31	35	49	-	-	-	-	-	-	-	285	285	406	121	70%	3	2	47A	North
Nicholas Orem Middle	MS	-	-	-	-	-	-	-	331	347	377	-	-	-	-	1,055	1,055	829	(226)	127%	3	2	22	North
North Forestville Elementary	ES	16	38	30	45	44	41	43	-	-	-	-	-	-	-	257	257	438	181	59%	7	6	25	Central
Northview Elementary	ES	39	100	102	93	82	95	109	-	-	-	-	-	-	-	620	620	797	177	78%	5	4	23	Central
Northwestern High	HS	-	-	-	-	-	-	-	-	-	-	629	622	493	437	2,381	2,381	2,340	(41)	102%	3	2	47B	North
Oaklands Elementary	ES	39	85	78	81	54	65	60	-	-	-	-	-	-	-	462	462	408	(54)	113%	1	1	21	North
Overlook Elementary	ES	14	63	44	46	41	49	50	-	-	-	-	-	-	-	307	307	545	238	56%	7	7	24	South
Oxon Hill Elementary	ES	17	28	41	35	38	32	33	-	-	-	-	-	-	-	224	224	423	199	53%	8	8	26	South

**Table 28. September 30th, 2023 Prince Georges's County Public Schools Enrollment**

School	School Type	Pre-K	K	1st Grade	2nd Grade	3rd Grade	4th Grade	5th Grade	6th Grade	7th Grade	8th Grade	9th Grade	10th Grade	11th Grade	12th Grade	Total	Total (adjusted for half-day 3 year-olds)	State Rated Capacity (**Design Capacity)	*Seats Available	*Building Utilization	Board of Education District	Council District	Legislative District	Region
Oxon Hill High	HS	-	-	-	-	-	-	-	-	-	-	460	425	365	331	1,581	1,581	1,360	(221)	116%	8	8	26	South
Oxon Hill Middle	MS	-	-	-	-	-	-	-	301	285	281	-	-	-	-	867	867	783	(84)	111%	8	8	26	South
Paint Branch Elementary	ES	40	78	76	80	66	82	59	-	-	-	-	-	-	-	481	481	357	(124)	135%	2	3	21	North
Panorama Elementary	ES	29	100	96	81	85	84	87	-	-	-	-	-	-	-	562	562	691	129	81%	8	7	26	South
Parkdale High	HS	-	-	-	-	-	-	-	-	-	-	847	672	554	498	2,571	2,571	2,288	(283)	112%	2	3	22	North
Petuxent Elementary	ES	19	43	51	34	52	37	48	-	-	-	-	-	-	-	284	284	451	167	63%	5	9	23	Central
Perrywood Elementary	ES	-	76	68	106	81	119	85	-	-	-	-	-	-	-	535	535	800	169	67%	6	6	25	Central
Phyllis E Williams Elementary	ES	-	68	73	57	57	50	44	-	-	-	-	-	-	-	349	349	538	189	65%	6	6	25	Central
Pointer Ridge Elementary	ES	-	52	53	54	48	47	61	-	-	-	-	-	-	-	315	315	596	281	53%	5	4	23	Central
Port Towns Elementary	ES	52	127	139	131	111	111	116	126	-	-	-	-	-	-	913	913	809	(104)	113%	4	5	47A	North
Potomac High	HS	-	-	-	-	-	-	-	-	-	-	423	318	251	191	1,183	1,183	1,915	732	62%	8	7	26	South
Princeton Elementary	ES	26	42	46	50	45	39	51	-	-	-	-	-	-	-	299	299	448	149	67%	7	8	26	South
Ridgecrest Elementary	ES	45	111	109	100	88	81	102	-	-	-	-	-	-	-	636	636	693	57	92%	3	2	47A	North
Riverdale Elementary	ES	40	79	96	89	96	101	100	-	-	-	-	-	-	-	601	601	563	(38)	107%	2	3	22	North
Robert Frost Elementary	ES	-	44	55	44	53	39	54	-	-	-	-	-	-	-	289	289	309	20	94%	2	3	22	North
Robert Goddard Montessori	PK-8	123	55	45	46	38	35	38	41	33	38	-	-	-	-	492	463	998	535	46%	1	4	22	North
Robert R Gray Elementary	ES	30	46	55	53	59	48	48	6	6	2	-	-	-	-	353	353	808	455	44%	4	5	47A	Central
Rockledge Elementary	ES	39	35	43	61	52	52	54	-	-	-	-	-	-	-	336	336	454	118	74%	5	4	23	Central
Rogers Heights Elementary	ES	33	69	87	94	74	100	78	98	-	-	-	-	-	-	633	633	610	(23)	104%	4	5	47A	North
Rosa L Parks Elementary	ES	38	109	96	101	71	90	81	-	-	-	-	-	-	-	586	586	810	224	72%	3	2	47B	North
Rosaryville Elementary	ES	39	80	82	81	59	86	81	-	-	-	-	-	-	-	508	508	783	275	65%	9	9	23	South
Rose Valley Elementary	ES	20	47	64	58	51	61	65	-	-	-	-	-	-	-	366	366	428	62	86%	8	9	26	South
Samuel Chase Elementary	ES	30	43	49	46	37	48	42	-	-	-	-	-	-	-	295	295	383	88	77%	8	8	26	South
Samuel Ogle Middle	MS	-	-	-	-	-	-	-	228	293	262	-	-	-	-	783	783	935	152	84%	5	4	23	Central
Samuel P Massie Academy	PK-8	21	33	63	41	45	54	62	63	54	44	-	-	-	-	480	480	769	269	62%	7	7	25	South
Scotchtown Hills Elementary	ES	38	103	102	84	89	76	76	-	-	-	-	-	-	-	568	568	790	222	72%	1	1	21	North
Seabrook Elementary	ES	23	60	52	45	50	55	69	-	-	-	-	-	-	-	354	354	409	55	87%	4	3	24	Central
Seat Pleasant Elementary	ES	13	42	46	49	34	48	41	-	-	-	-	-	-	-	273	273	354	81	77%	6	7	24	Central
Sonia Sotomayor Middle At Adelphi	MS	-	-	-	-	-	-	-	351	351	359	-	-	-	-	1,041	1,041	1,200**	159	87%	3	2	47B	North
Springhill Lake Elementary	ES	40	106	129	129	109	128	116	-	-	-	-	-	-	-	757	757	561	(196)	135%	2	4	22	North
Stephen Decatur Middle	MS	-	-	-	-	-	-	-	224	248	261	-	-	-	-	733	733	901	168	81%	9	9	25	South
Suitland Elementary	ES	38	76	68	80	53	80	71	-	-	-	-	-	-	-	466	466	702	236	66%	7	7	24	South
Suitland High	HS	-	-	-	-	-	-	-	-	-	-	584	446	318	371	1,719	1,719	2,000	261	86%	7	7	24	South
Surrattsville High	HS	-	-	-	-	-	-	-	-	-	-	197	183	209	191	780	780	1,237	457	63%	9	9	25	South
Tajac Elementary	ES	18	47	59	64	61	41	55	-	-	-	-	-	-	-	345	345	545	200	63%	8	8	26	South
Templeton Elementary	ES	39	121	124	126	105	143	123	-	-	-	-	-	-	-	781	781	-	-	-	4	5	47A	North

**Table 28. September 30th, 2023 Prince George's County Public Schools Enrollment**

School	School Type	Pre-K	K	1st Grade	2nd Grade	3rd Grade	4th Grade	5th Grade	6th Grade	7th Grade	8th Grade	9th Grade	10th Grade	11th Grade	12th Grade	Total	Total (adjusted for half-day 3 year-olds)	State Rated Capacity (**Design Capacity)	*Seats Available	*Building Utilization	Board of Education District	Council District	Legislative District	Region
Thomas G Pullen	K-8	-	68	69	73	72	73	75	100	101	105	-	-	-	-	736	736	881	145	84%	6	5	24	Central
Thomas Johnson Middle	MS	-	-	-	-	-	-	-	396	427	416	-	-	-	-	1,239	1,239	1,030	(209)	120%	4	5	24	Central
Thomas S Stone Elementary	ES	38	91	83	97	75	80	68	-	-	-	-	-	-	-	532	532	638	106	83%	3	2	47A	North
Thurgood Marshall Middle	MS	-	-	-	-	-	-	-	258	218	255	-	-	-	-	731	731	923	192	79%	8	8	26	South
Tulip Grove Elementary	ES	-	75	75	86	60	96	65	-	-	-	-	-	-	-	457	457	457	-	100%	5	4	23	Central
University Park Elementary	ES	48	79	91	88	75	90	64	-	-	-	-	-	-	-	535	535	565	30	95%	3	3	22	North
Valley View Elementary	ES	20	53	53	49	54	81	42	-	-	-	-	-	-	-	352	352	541	189	65%	8	8	26	South
Vansville Elementary	ES	40	101	100	101	95	115	117	-	-	-	-	-	-	-	669	669	836	167	80%	1	1	21	North
Waldon Woods Elementary	ES	20	80	74	95	100	104	93	-	-	-	-	-	-	-	566	566	568	2	100%	9	9	27A	South
Walker Mill Middle	MS	-	-	-	-	-	-	-	361	359	349	-	-	-	-	1,049	1,049	1,200**	151	87%	6	6	25	Central
Whitehall Elementary	ES	-	75	76	72	84	83	90	-	-	-	-	-	-	-	480	480	411	(69)	117%	5	4	23	Central
William Beanes Elementary	ES	21	67	58	70	53	50	60	-	-	-	-	-	-	-	379	379	560	181	68%	7	7	25	Central
William Paca Elementary	ES	46	83	90	103	86	89	77	-	-	-	-	-	-	-	574	574	601	27	96%	6	5	24	Central
William W Hall Academy	PK-8	33	38	49	57	57	63	41	50	55	72	-	-	-	-	515	515	709	194	73%	6	7	24	Central
William Wirt Middle	MS	-	-	-	-	-	-	-	98	432	470	-	-	-	-	1,000	1,000	850	(150)	118%	2	3	22	North
Woodmore Elementary	ES	24	54	58	66	63	67	79	-	-	-	-	-	-	-	411	411	-	-	-	5	6	23	Central
Woodridge Elementary	ES	20	44	51	44	44	41	41	47	-	-	-	-	-	-	332	332	337	5	99%	4	3	22	North
Yorktown Elementary	ES	-	54	59	63	75	58	57	-	-	-	-	-	-	-	366	366	457	91	80%	5	4	23	Central
																<b>130,983</b>								

\*Calculated using the column:  
 "Total (adjusted for half-day 3 year olds)"

## Appendix B. Adopted Subdivision Regulations

### 24-4510. Schools Adequacy

#### (a) Applicability

- (1) Unless exempted in accordance with Section 24-4510(a)(3) below, a certificate for schools adequacy shall be reviewed and approved, approved with conditions, or denied in accordance with Section 24-4503, Certificate of Adequacy.
- (2) To gain approval of the certificate for schools adequacy, the applicant shall demonstrate the proposed development complies with the LOS standards of Section 24-4510(b) below or provides adequate mitigation (if appropriate), and complies with all other relevant requirements of this Section.
- (3) The following are exempt from the requirements of this Section:
  - (A) A preliminary plan for subdivision (minor or major) which is a redevelopment project that replaces existing dwelling units;
  - (B) A preliminary plan for subdivision (minor or major) for elderly housing operated in accordance with the State and Federal Fair Housing laws;
  - (C) A preliminary plan for subdivision (minor or major) that consists of no more than three lots on less than five gross acres of land, whose lots, except for one to be retained by grantor, are to be conveyed to a son or daughter or lineal descendant of the grantor; and
  - (D) A preliminary plan for subdivision (minor or major) located in the Transit-Oriented/Activity Center base or PD zones.

#### (b) Adopted LOS Standard for Schools

- (1) The adopted LOS standard for schools is based on school clusters, which are groupings of elementary, middle, and high schools that are impacted by the preliminary plan for subdivision (minor or major).
- (2) The adopted LOS standard is that the number of students generated by the proposed subdivision at each stage of development will not exceed 105 percent of the state rated capacity, as adjusted by the School Regulations, of the affected elementary, middle, and high school clusters.
- (3) The number of elementary, middle, and high school students generated by the proposed subdivision shall be determined in accordance with the pupil yield factors for each dwelling unit type as determined by the Planning Director from historical information provided by the Superintendent of the Prince George's County Public Schools.
- (4) The Planning Director shall determine:
  - (A) The school cluster or clusters impacted by the proposed preliminary plan for subdivision (minor or major).
  - (B) The actual enrollment, which is the number of elementary, middle, and high school students, as reported by the Superintendent of the Prince George's County Public Schools as of September 30 of the prior year, and as calculated by the Planning Director that is effective in January of each year for use in that calendar year.
  - (C) The completion enrollment, which is the total number of elementary, middle, and high school students to be generated by the estimated number of residential completions, for each school cluster.
    - (i) Residential completions are estimated from the total of all substantially completed dwelling units added to the County's assessable tax base in the two previous calendar years.
    - (ii) In determining completion enrollment, the estimated number of residential completions in a given school cluster will not exceed the number of dwelling units shown on:



- (aa) An approved preliminary plan of subdivision (minor or major) with no waiting period, or with a waiting period less than 24 months as of September 30 of each calendar year; and
  - (bb) All recorded plats not subject to an adequate public facilities test for schools at time of building permit issuance.
- (D) The subdivision enrollment, which is the anticipated number of elementary, middle, and high school students to be generated by all dwelling units shown on the proposed preliminary plan of subdivision (minor or major), multiplied by the pupil yield factor.
- (E) The cumulative enrollment, which is the total of all subdivision enrollments resulting from approved preliminary plans of subdivision (minor or major) in each school cluster for the calendar year in which an adequate public facilities test is being applied.
- (F) The Planning Director shall determine the subdivision's cluster enrollment by adding: the actual number of students in the cluster as of September 30; the number of students anticipated from residential completions in the cluster; the number anticipated from the subdivision; and the number of students anticipated from subdivisions already approved in the cluster within the calendar year. The Planning Director shall then determine the percent capacity by dividing the cluster enrollment by the state rated capacity (adjusted by the School Regulations) of schools in the cluster.

**(c) Mitigation**

When conditioned upon payment of the schools facility surcharge, or when otherwise exempt from the schools facility surcharge pursuant to Section 10-192.01, School Facilities Surcharge, of the County Code, the subdivision may be approved regardless of actual or projected school capacity.

## Appendix C. Elementary School Map Index

**Table 29.** Elementary School Utilization Rates in Prince George's County

School Number on Map 2	Elementary School Name	Utilization Rate
1	Accokeek Academy	114%
2	Adelphi Elementary	NA
3	Allenwood Elementary	73%
4	Andrew Jackson Academy	57%
5	Apple Grove Elementary	60%
6	Ardmore Elementary	89%
7	Arrowhead Elementary	94%
8	Avalon Elementary	69%
9	Baden Elementary	55%
10	Barack Obama Elementary	77%
11	Barnaby Manor Elementary	76%
12	Beacon Heights Elementary	112%
13	Beltsville Academy	131%
14	Berwyn Heights Elementary	111%
15	Bladensburg Elementary	102%
16	Bond Mill Elementary	98%
17	Bradbury Heights Elementary	48%
18	Brandywine Elementary	120%
19	Calverton Elementary	136%
20	Capitol Heights Elementary	83%
21	Carmody Hills Elementary	88%
22	Carole Highlands Elementary	100%
23	Carrollton Elementary	106%
24	Catherine T. Reed Elementary	95%
25	Cherokee Lane Elementary	99%
26	Chillum Elementary	91%
27	Clinton Grove Elementary	70%
28	Colin L. Powell Academy	45%
29	Columbia Park Elementary	80%
30	Concord Elementary	45%
31	Cool Spring Elementary	93%
32	Cooper Lane Elementary	95%
33	Cora L. Rice Elementary	76%
34	Deerfield Run Elementary	90%
35	District Heights Elementary	68%
36	Dodge Park Elementary	108%
37	Doswell E. Brooks Elementary	39%
38	Edward M. Felegy Elementary	75%
39	Flintstone Elementary	84%
40	Forest Heights Elementary	68%
41	Fort Foote Elementary	62%
42	Fort Washington Forest Elementary	90%
43	Francis Scott Key Elementary	62%
44	Francis T. Evans Elementary	89%
45	Gaywood Elementary	131%
46	Gladys Noon Spellman Elementary	88%
47	Glassmanor Elementary	82%
48	Glenn Dale Elementary	113%
49	Glenridge Elementary	92%
50	Greenbelt Elementary	96%
51	High Bridge Elementary	109%
52	Highland Park Elementary	42%
53	Hillcrest Heights Elementary	56%
54	Hollywood Elementary	89%
55	Hyattsville Elementary	104%
56	Indian Queen Elementary	45%
57	J. Frank Dent Elementary	59%
58	James H. Harrison Elementary	88%
59	James McHenry Elementary	126%
60	James Ryder Randall Elementary	64%

**Table 29.** Elementary School Utilization Rates in Prince George's County (continued)

School Number on Map 2	Elementary School Name	Utilization Rate
61	John H. Bayne Elementary	57%
62	Judge Sylvania W. Woods, Sr. Elementary	88%
63	Kenilworth Elementary	86%
64	Kettering Elementary	68%
65	Kingsford Elementary	62%
66	Lake Arbor Elementary	70%
67	Lamont Elementary	92%
68	Langley Park-McCormick Elementary	143%
69	Laurel Elementary	101%
70	Lewisdale Elementary	120%
71	Longfields Elementary	56%
72	Magnolia Elementary	88%
73	Marlton Elementary	63%
74	Mary Harris "Mother" Jones Elementary	102%
75	Mattaponi Elementary	80%
76	Melwood Elementary	79%
77	Montpelier Elementary	94%
78	Mount Rainier Elementary	70%
79	North Forestville Elementary	59%
80	Northview Elementary	78%
81	Oaklands Elementary	113%
82	Oxon Hill Elementary	53%
83	Paint Branch Elementary	135%
84	Panorama Elementary	81%
85	Patuxent Elementary	63%
86	Perrywood Elementary	67%
87	Pointer Ridge Elementary	53%
88	Port Towns Elementary	113%
89	Princeton Elementary	67%
90	Ridgecrest Elementary	92%
91	Riverdale Elementary	107%
92	Robert Frost Elementary	94%
93	Robert R. Gray Elementary	44%
94	Rockledge Elementary	74%
95	Rogers Heights Elementary	104%
96	Rosa L. Parks Elementary	72%
97	Rosaryville Elementary	65%
98	Rose Valley Elementary	86%
99	Samuel Chase Elementary	77%
100	Samuel P. Massie Academy	62%
101	Scotchtown Hills Elementary	72%
102	Seabrook Elementary	87%
103	Seat Pleasant Elementary	77%
104	Springhill Lake Elementary	135%
105	Suitland Elementary	66%
106	Tayac Elementary	63%
107	Templeton Elementary	NA
108	Thomas S. Stone Elementary	83%
109	Tulip Grove Elementary	100%
110	University Park Elementary	95%
111	Valley View Elementary	65%
112	Vansville Elementary	80%
113	Waldon Woods Elementary	100%
114	Whitehall Elementary	117%
115	William Beanes Elementary	68%
116	William Paca Elementary	96%
117	William W. Hall Academy	73%
118	Woodmore Elementary	NA
119	Woodridge Elementary	99%
120	Yorktown Elementary	80%

NA: No state-rated capacity

# Acknowledgments

## Senior Management Team

Lakisha Hull, AICP, LEED AP BD+C	Planning Director
Derick Berlage, AICP	Acting Deputy Director for Operations
James Cannistra, C.P., GISP	Division Chief, Information Management

## Production Team

Kui Zhao, AICP	Planning Supervisor
William Lescure, GISP	Senior GIS Specialist
Emma Walker, Graduate Student	University of Maryland at College Park

## Prince George's County Public Schools

Marsha Washington	School Boundaries Analyst
-------------------	---------------------------

## Publications Team

Tamu Wright	Publications Specialist
Thi-Lai Simpson	Publications Specialist



