

GETTING AROUND (CONNECTIVITY & TRANSPORTATION)

OPPORTUNITIES

- Redesign of Peace Cross to create a central public gathering hub and enhance access to the riverfront.
- Major roads can be redesigned as Complete Streets to incorporate more comfortable sidewalks, bicycle facilities, and other streetscape improvements to incentivize redevelopment and transform these into neighborhood main streets.
- Enhance access to the waterfront park by better connecting on-street pedestrian and bicycle facilities with the trail network.
- Create a network of neighborhood Bicycle Boulevards or Neighborways.
- Integrate transit stops as part of mobility hubs and public space design.
- Enhance high-capacity transit along major roads and connect to MARC, Metro, and Purple Line stations.

Narrowest roadway on Kenilworth to slow traffic. Add facilities for walking/biking to Purple Line @ Riverdale Park.

Almost all the roads in our communities are dead ends - need access to trails, across river, & CSX tracks

PUBLIC TRANSPORTATION & CONNECTIVITY



Peace Cross Intersection
Source: M-NCPPC



Intersection of Annapolis Road and 48th Street
Source: M-NCPPC

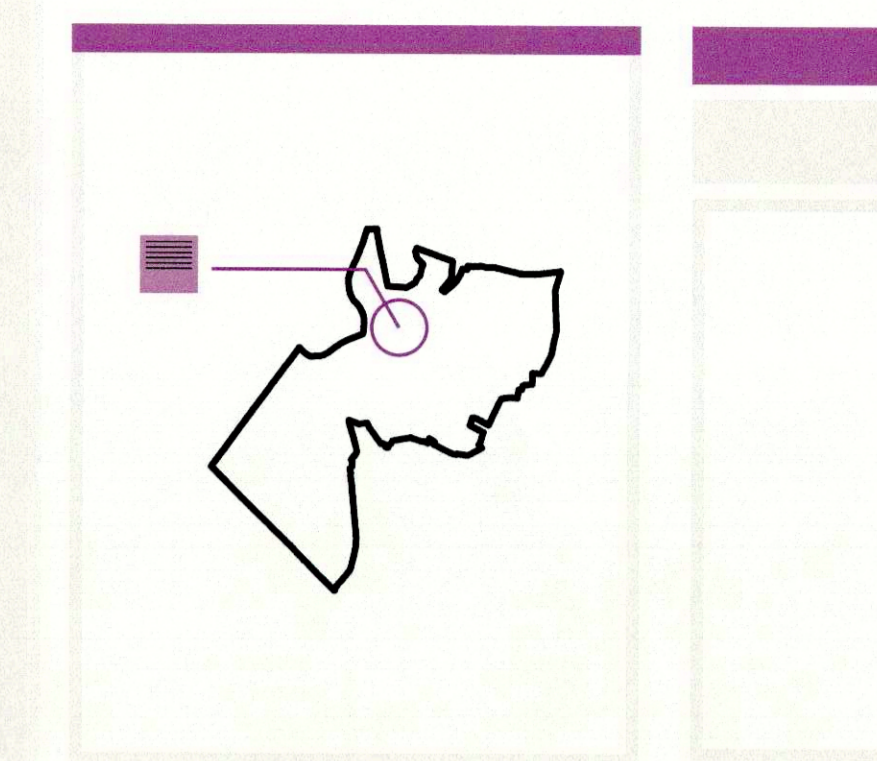


WMATA Bus Stop in Bladensburg
Source: M-NCPPC

ACTIVITY

1. CIRCLE the areas on the map where you see issues or opportunities for public transportation improvements.
2. WRITE the specific improvement by your circle with a leader line (see Example Diagram to the right).
3. SHARE your thoughts on the question below using a post-it note. Upon completion, place your post-it in the area below.

Example Diagram



WHAT ELSE NEEDS TO BE ADDRESSED TO MAKE IT SAFER FOR YOU TO WALK, BIKE, AND USE PUBLIC TRANSPORTATION TO GET WHERE YOU WANT TO GO?

- slower car speeds
- Gathering hub in front of Peac Cross Playhouse + recruiting traffic to Annap. Rd.

the CSX tracks and trains have safe pedestrian and bike crossings esp at edmonston

Creative + inviting walk ways + plenty of lighting. Near amenities - No scary places like tunnels to Bladensburg, Washington Park

Interesting innovative travel solutions especially for very young + old

open all our dead end streets to pedestrian access along both sides of the river & across CSX

better sidewalks... and sidewalks in areas where they aren't...

Residents can access everything they need (groceries, recreation, restaurants, etc.) whether they walk, bike, or transit

slower roads that are designed for people

Provide a protected/stp street for 1,945 450 eastward across the Beltway. The only safe road to get across the Beltway at present is Good Luck Road which is very far north.

There should be a heritage trail connect to river also

Poor connection to historic sites

Speed Control
Trails, Paths to walk
Traffic Calming

Safe infrastructure for bicyclists and pedestrians on Kenilworth Ave

Crossing Kenilworth back to Annap. Rd. there is a pocket with bad traffic to and from Hyattsville (coming from Bladensburg) NEEDS A LIGHT

Public Parking Structure (adj. to Public Playhouse - need P&G to get it done...

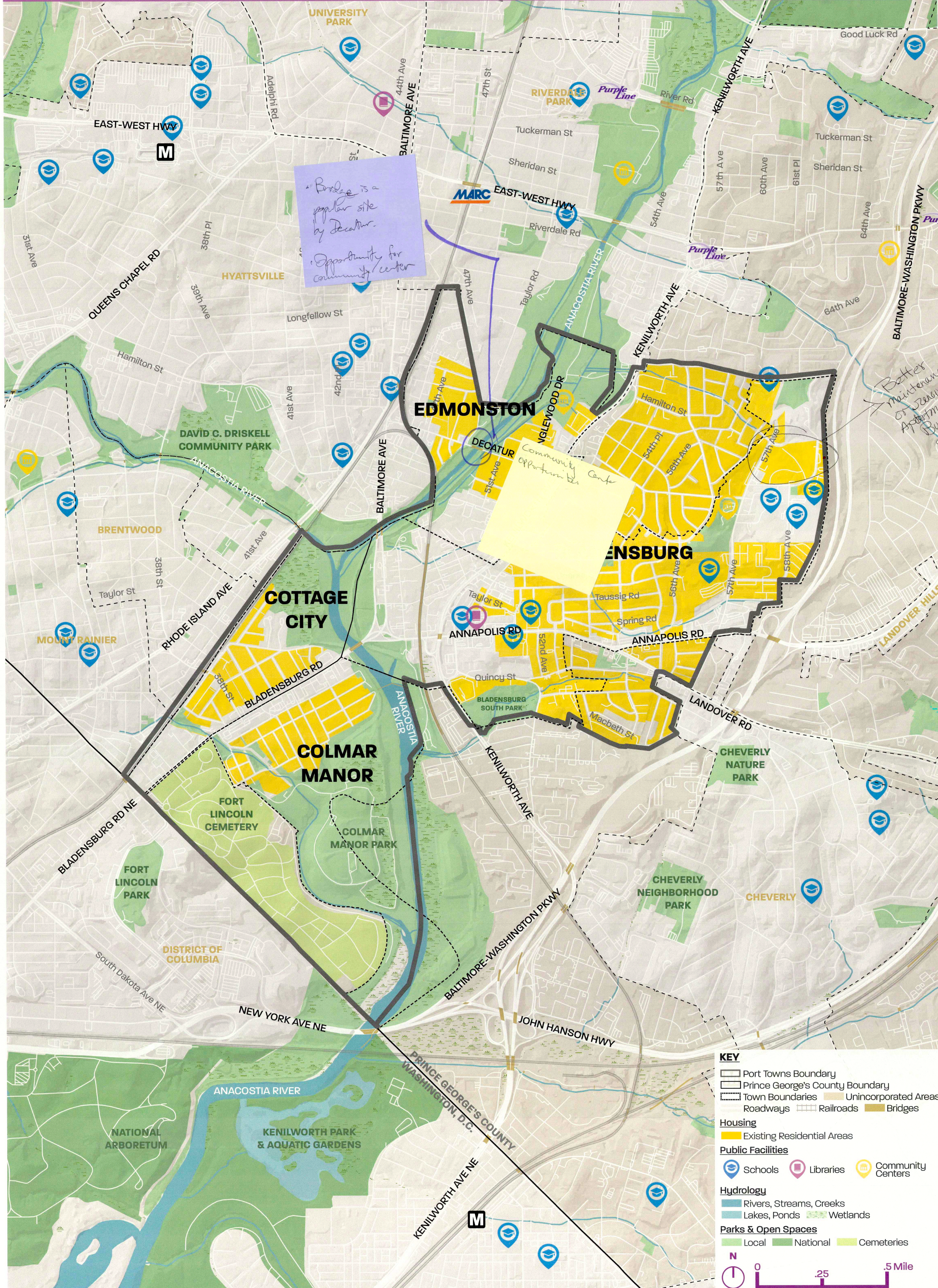
Annapolis Rd. Gateway - do it!

FINDING AFFORDABLE & GREAT PLACES TO LIVE

OPPORTUNITIES

- Investments in streetscape improvements and wayfinding can help to communicate community pride and link major amenities (such as parks, town hall, etc.).
- Preservation of existing stable single-family neighborhoods can help stabilize surrounding property values and encourage housing upkeep.
- Strategically located large commercial and/or industrial sites may be ripe for higher-density residential development.
- Event programming can expose the market to Port Towns' many assets and help to support local small, independent businesses.

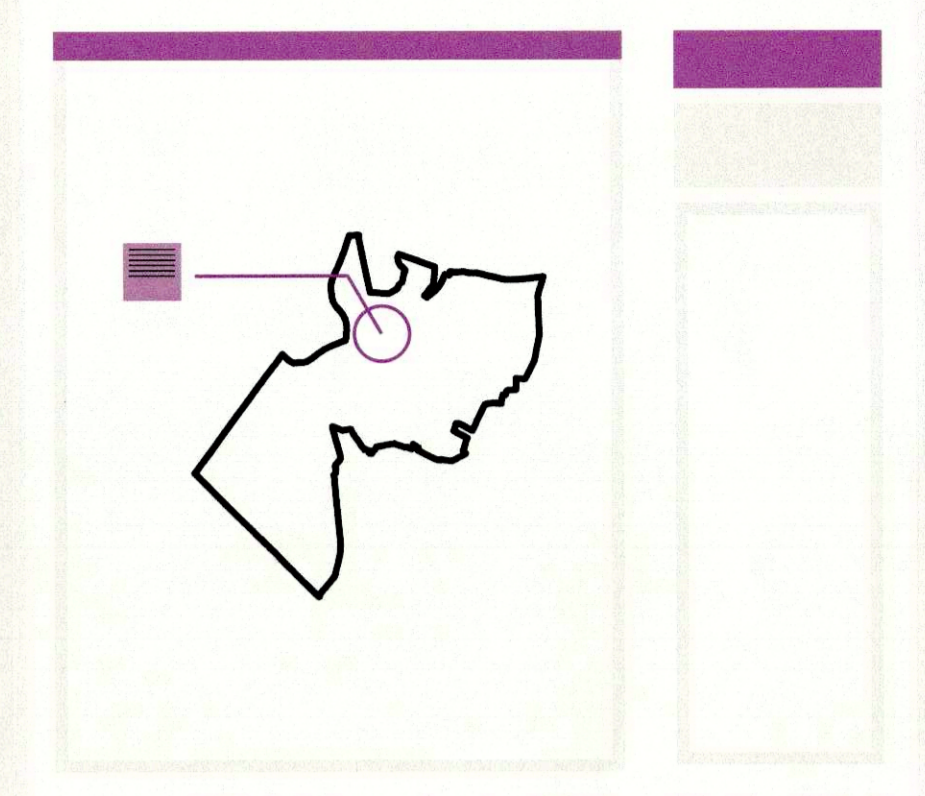
HOUSING AND NEIGHBORHOODS, HEALTHY COMMUNITIES, LAND USE, ECONOMIC PROSPERITY



ACTIVITY

1. **CIRCLE** the areas on the map where you see issues or opportunities for housing and neighborhood improvements.
2. **WRITE** the specific improvement by your circle with a leader line (see Example Diagram to the right).
3. **SHARE** your thoughts on the question below using a post-it note. Upon completion, place your post-it in the area below.

Example Diagram



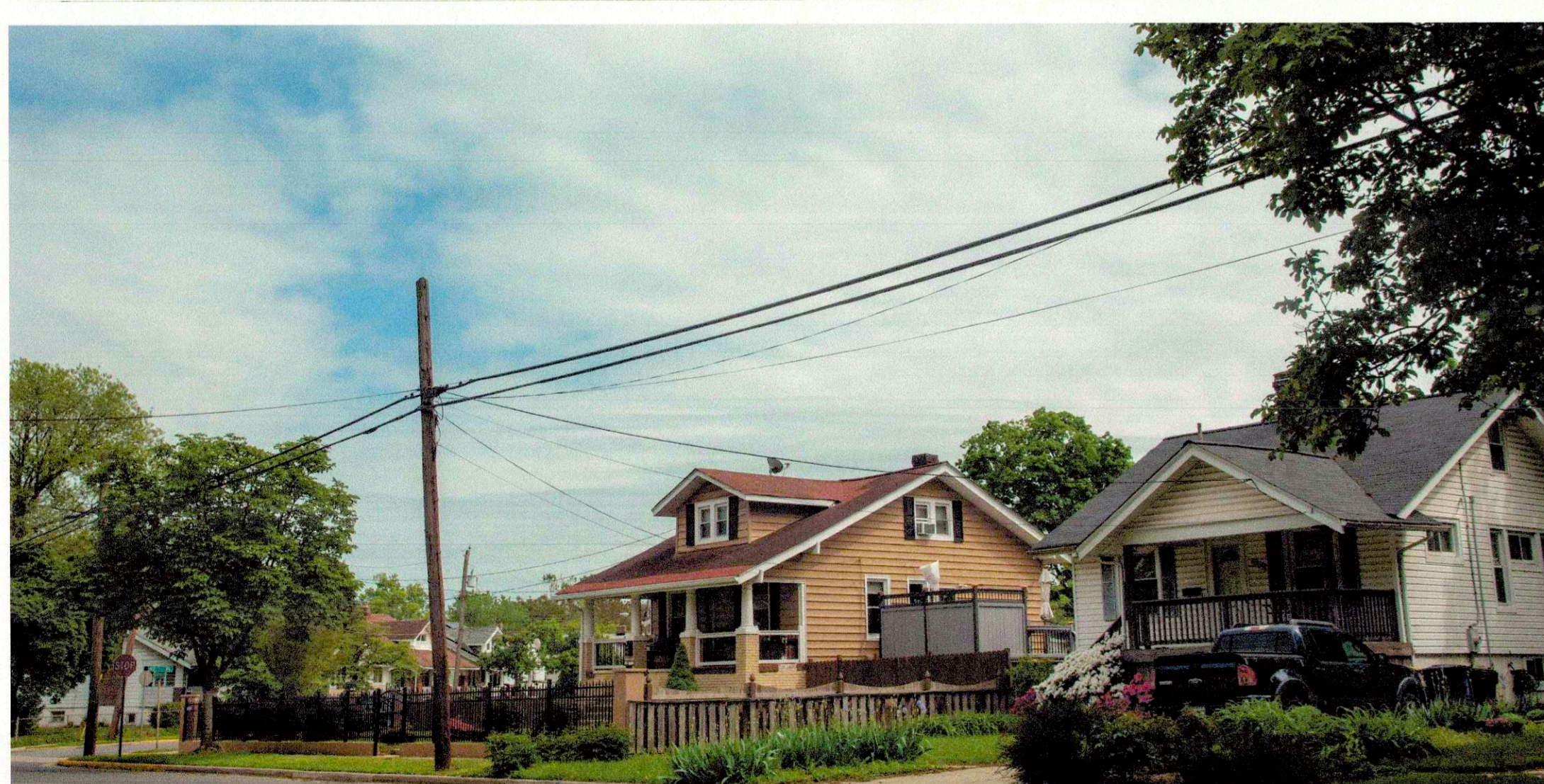
WHAT IMPROVEMENTS TO HOUSING AND NEIGHBORHOODS WOULD YOU LIKE TO SEE?

- Legalize ADU as a multi-family option**
- Allow ADUs in SF zones to increase density and provide more types of housing choices**
- Affordable apts so that multiple families don't have to squish into a single family detached home.**
- Improve small Save a lot small next to residential area. It can be dangerous with people who hang around.**
- CAUTIONER OF HOUSING AND MIX WITHIN AREAS NEED IMPROVEMENT**
- Leverage neighboring arts district**
- Allow corner stores in single-family areas in order to serve local residents**

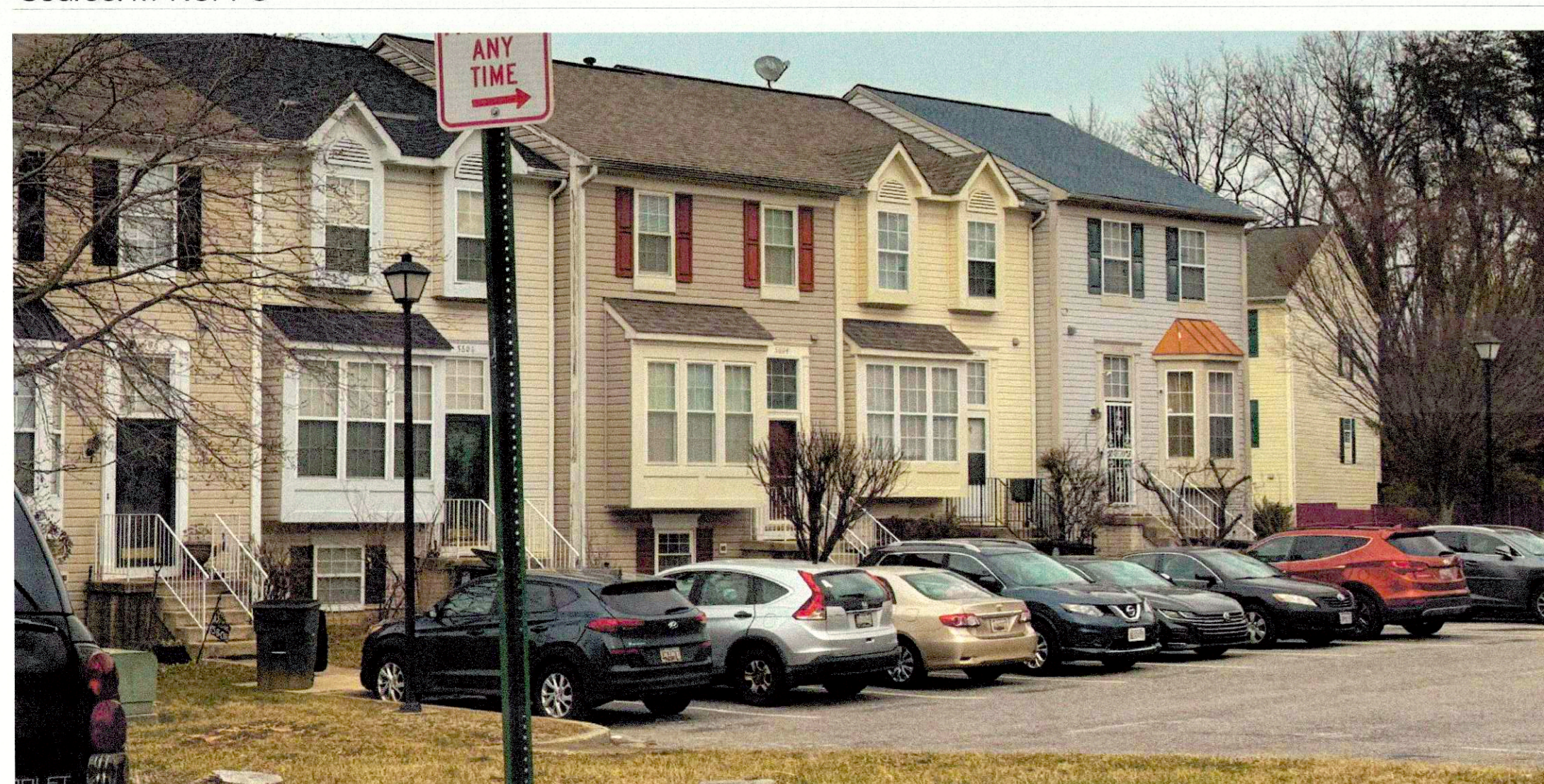
- Need progressive and proactive single-family rehab**
- Better upkeep & maintenance Apartments & Condos more flowers, plants trees, charm & street lights**
- or banners celeb rating Bladensburg along 5th**
- * MORE CODE ENFORCEMENT**
- * BETTER ROADWAYS**



Multi-Family Apartments in Bladensburg
Source: M-NCPPC



Single-Family Neighborhood Homes in Port Towns
Source: M-NCPPC



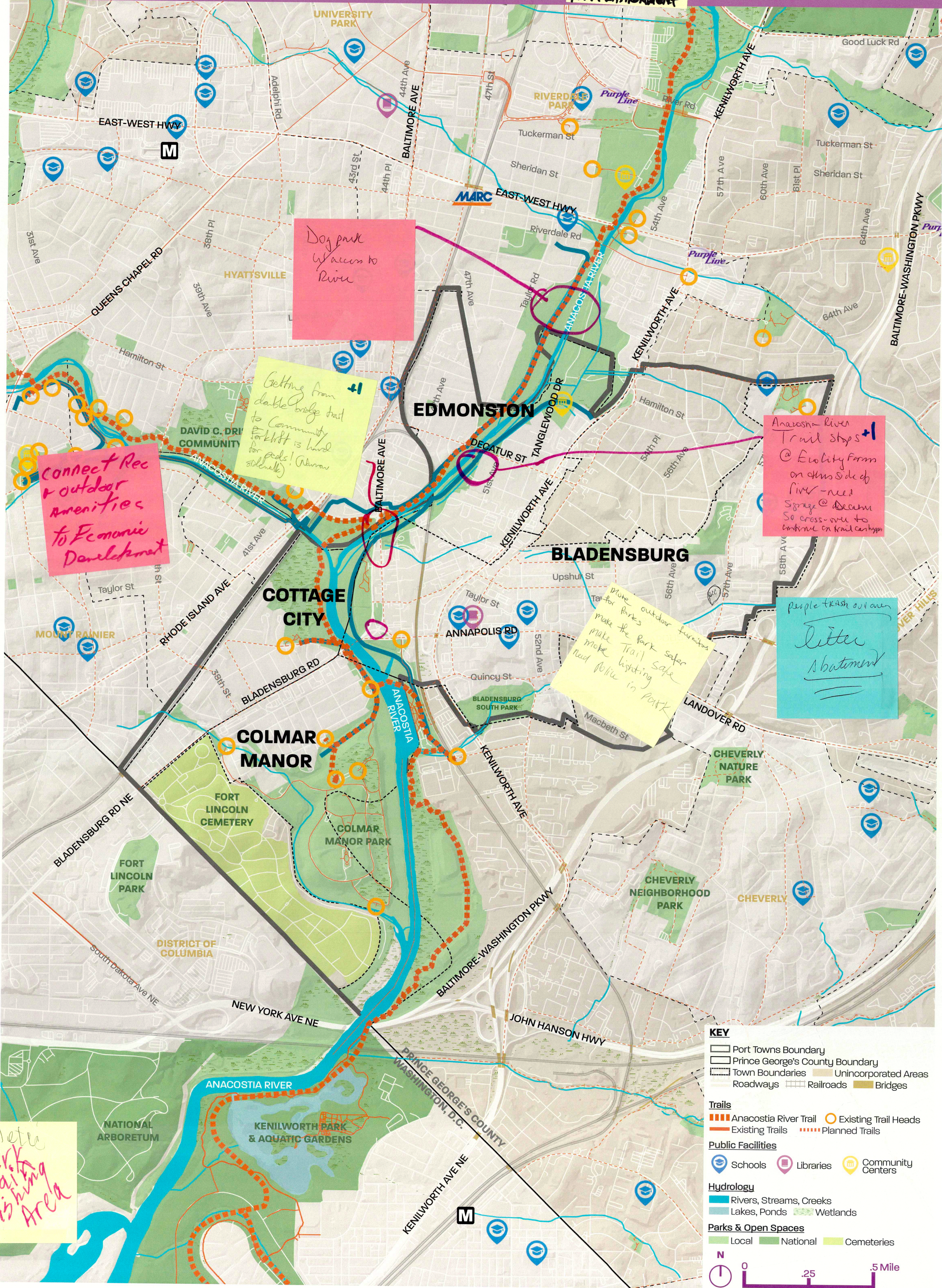
Townhouse Development in Bladensburg
Source: RHI

EXPLORING OUTDOORS & RECREATION

OPPORTUNITIES

- Utilize the Anacostia River / Anacostia River Trail as a **central organizing blueway/greenway for pedestrian and bicyclist mobility**, to connect neighborhoods, strong destinations, and key corridors.
- Surrounding and connecting key corridors with an **organizing trail and open space system** can encourage increased usage of outdoor facilities.
- **Establish distinct trailheads for placemaking and wayfinding.** Port Towns has a vast series of trail networks that would benefit from identifying elements.
- **Diversify recreational experiences** by connecting existing pocket parks, fields, playgrounds, and tot lots throughout Port Towns.

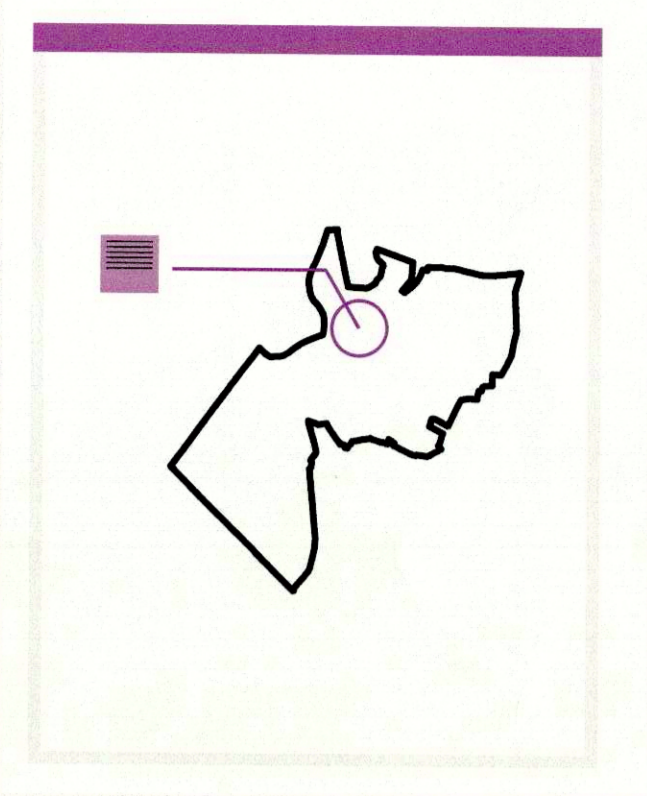
PARKS AND OPEN SPACES, TRAILS



ACTIVITY

1. **CIRCLE** the areas on the map where you see issues or opportunities for park and open space / outdoor recreation improvements.
2. **WRITE** the specific improvement by your circle with a leader line (see Example Diagram to the right).
3. **SHARE** your thoughts on the question below using a post-it note. Upon completion, place your post-it in the area below.

Example Diagram



WHAT DO YOU ENJOY ABOUT SPENDING TIME OUTDOORS IN THE AREA WHERE YOU LIVE? WHAT ADDITIONAL OUTDOOR OPPORTUNITIES SHOULD PLAN EXPLORE?



Bladensburg Waterfront Park
Source: M-NCPPC



David C. Harrington Community Park
Source: M-NCPPC



Anacostia River Trail
Source: M-NCPPC

Add etc Park Repairing Fishing Area

FINDING CONVENIENT & HEALTHY SHOPPING

OPPORTUNITIES

- Investments in streetscape and facade improvements can enhance the image and value of the area's commercial corridors.
- Central public spaces can build synergy between commercial uses, such as retail and restaurants.
- Strategically located large commercial and/or industrial sites may be ripe for higher-density residential development.
- Event programming can attract the market to the area's unique blend of local businesses and restaurants.

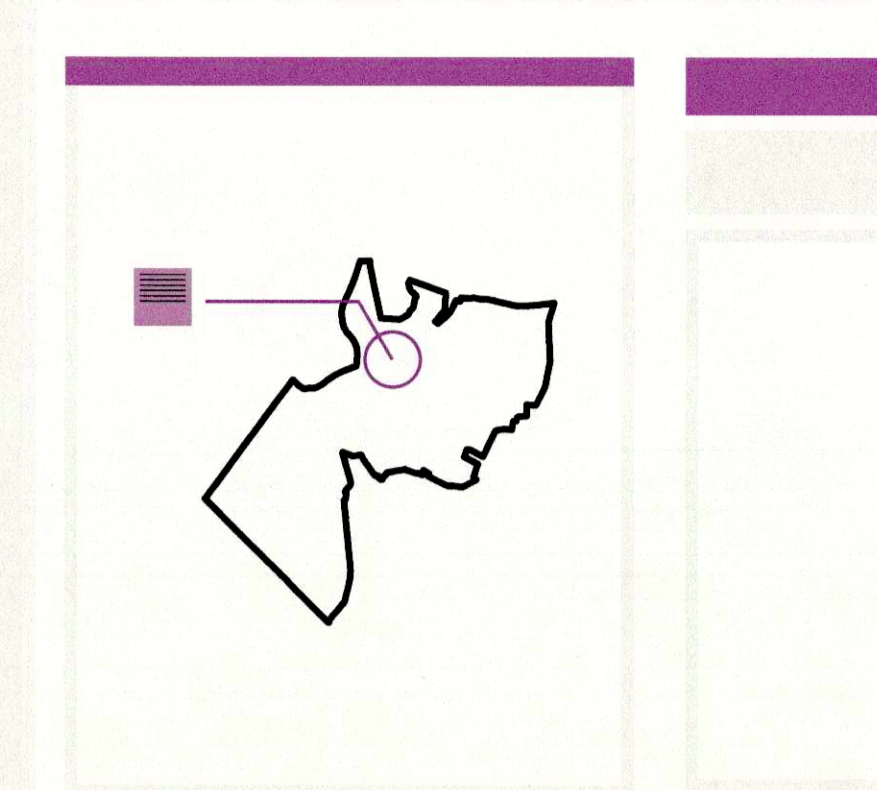
COMMERCIAL, RETAIL, EATERIES/RESTAURANTS, SHOPPING



ACTIVITY

1. CIRCLE the areas on the map where you see issues or opportunities for commercial and retail improvements.
2. WRITE the specific improvement by your circle with a leader line (see Example Diagram to the right).
3. SHARE your thoughts on the question below using a post-it note. Upon completion, place your post-it in the area below.

Example Diagram



WHERE DO YOU SHOP TODAY? HOW WOULD YOU LIKE TO SEE SHOPPING OPTIONS BE IMPROVED?

Add Grocery Store
Shops @ Wegmans in large - variety/selection BJs/Costco
Walmart

A DIVERSITY OF STORES - RANGE OF QUANTITY + QUALITY - FEWER DOLLAR STORES + JUNK FOOD + more healthy and nutritious products

Branding -> like the current efforts in Iron Council, coordinated w/ University of MD

I have found staples to be cheaper at Whole Foods that at Compare Foods. Compare Foods is more \$\$\$ than Shoppers was.

Marketability and branding through uniformity of color scheme

Don't stop in the area bc of lack of options. Fast food imagery. Not a fan of options. Riverside park shopping.

Would appreciate more outdoor eateries. Walkable options preferred. Feel free to stroll past would be great (Edmonston)

Just more in urban agriculture to increase healthy food access. Farmers market may not be the best solution should require much collaboration between farmers. Encourage restaurants to source locally and increase healthy options.

Roadwork is a major driver & affects perception of being cut-off.

More open green space especially around elevated outdoor dining.

Opportunity - tailor various uses sustainable uses/healthy area - local scale markets (no food producing over options)

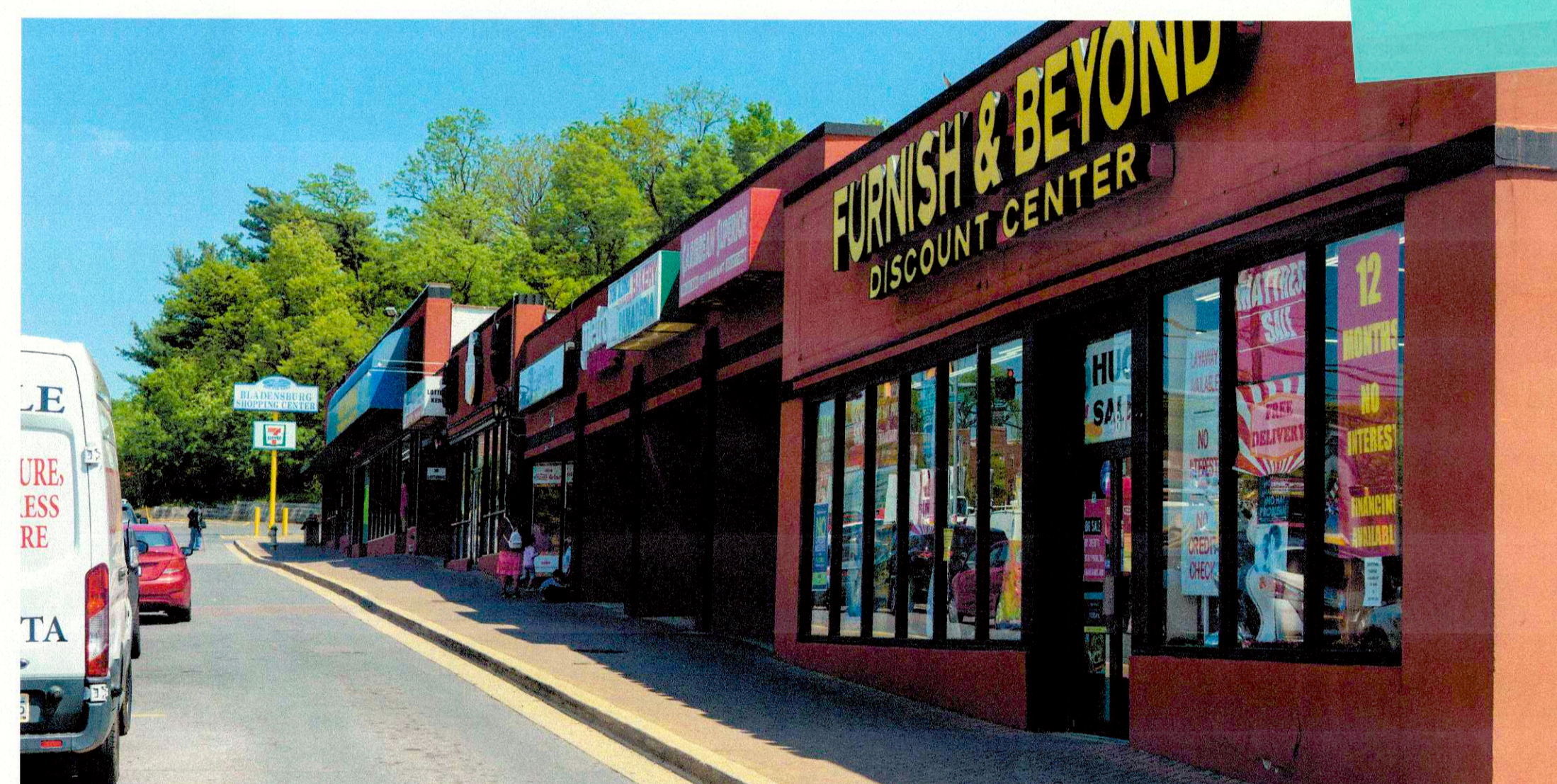
No new dollar stores create stores outside of industrial areas - offer outdoor dining/sidewalk cafe options

Fresh produce in grocery stores. Place to just sit between stores not a restaurant. What a great idea! Natural beauty storage.

You can walk to places but the walk is horrible!

I DON'T EVEN SHOP IN THIS AREA. I PREFER TO DRIVE TO GREENBET OR LANHAM INSTEAD OF GROCERY STORES

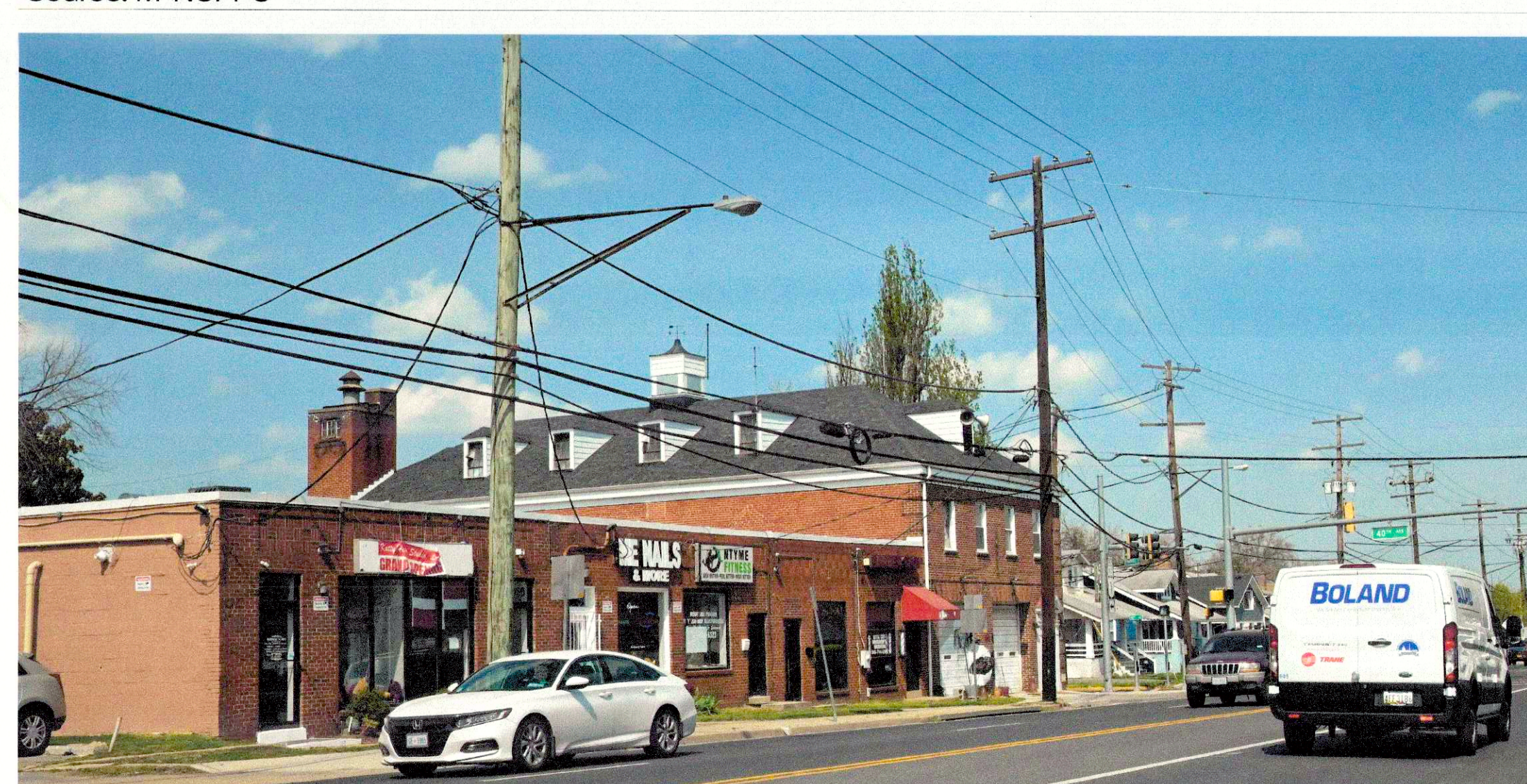
Similar issues in Langley Park improving hotel/limiting small business retail



Bladensburg Shopping Center
Source: M-NCPPC



The Shops at Bladensburg
Source: M-NCPPC



Businesses along Bladensburg Road
Source: M-NCPPC

Clear this shopping area. Restaurant Row for family dining

MKT was too restrictive for these parcels. (see before) Existing uses could be shared off by new dev.

Zoning gives new opportunity but should NOT remove tenants - MARK SPENCER