

# ACTIVITY 2 - Activity Preference Survey

## Mixed-Use Area Activities [5 minutes]

Which of the services, amenities, and experiences would you like to have in commercial or mixed-use areas of West Hyattsville-Queens Chapel Sector Plan area (e.g. the West Hyattsville Metro Station, Hamilton Street, and potentially in areas south of Chillum Road) (Choose up to 3) 5 minutes



Did we miss anything?

## Places to Gather [5 minutes]

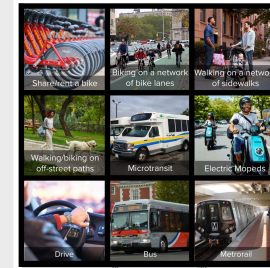
What types of activities would you most like to do in the area's public spaces? (Choose up to 3) 5 minutes



Did we miss anything?

## Mobility Options [5 minutes]

Ideally, how would you like to get around the West Hyattsville area? (Choose up to 3) 5 minutes



Did we miss anything?

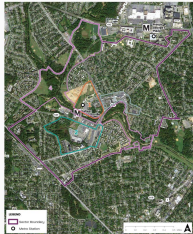
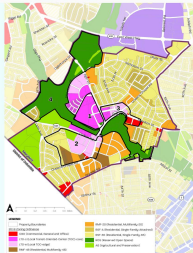
# ACTIVITY 3 - Focus Areas [25 minutes]

## WHQC Focus Areas

The following focus areas have been developed based on preliminary conversations with stakeholders and community members as potential areas of transformation.

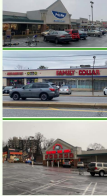
- Focus Area 1 - West Hyattsville Local Transit Center**
- Focus Area 2 - Neighborhoods south of Chillum Road**
- Focus Area 3 - Hamilton Street corridor**
- Focus Area 4 - Northwest Branch of the Anacostia and WHQC parks and open space**

Focus Areas 1-3 are the most likely to change in use, form and intensity. Focus Area 4 serves as an opportunity to enhance the existing environmental and recreational amenities in WHQC.



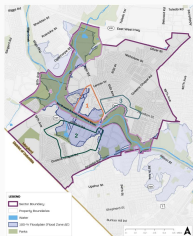
## Focus Area 2 - Neighborhood South of Chillum Road [5 minutes]

The STRENGTHS we would like to build on in Focus Area 2 include:



The things we would like to CHANGE in Focus Area 2 include:

The ROLE that Focus Area 2 should play in WHQC is:



## Focus Area 4 - Parks and Open Space [5 minutes]

The STRENGTHS we would like to build on in Focus Area 4 include:



The things we would like to CHANGE in Focus Area 4 include:

The ROLE that Focus Area 4 should play in WHQC is:

## Focus Area 1 - West Hyattsville Local Transit Center [5 minutes]

The STRENGTHS we would like to build on in Focus Area 1 include:



The things we would like to CHANGE in Focus Area 1 include:

The role that Focus Area 1 should play in WHQC is:

## Focus Area 3 - Hamilton Street Corridor [5 minutes]

The STRENGTHS we would like to build on in Focus Area 3 include:



The things we would like to CHANGE in Focus Area 3 include:

The role that Focus Area 3 should play in WHQC is:

# ACTIVITY 4 - Visioning and Goals

**1 WHQC is unique and diverse, and peoples' differences are treasured, not just tolerated. Visitors return to WHQC to experience the community, culture, services, and amenities. Community events and festivals allow locals, regional residents, and visitors to share music, food, and ideas.**

<b>A</b>	<b>B</b>	
I see myself and my community represented in this vision	I do not see myself or my community represented in this vision	What would you add or change about this vision statement?

**2 WHQC supports local businesses and has a strong working relationship with University of Maryland and other key sectors that help people find ample opportunity in WHQC and the County. Small businesses thrive, and entrepreneurs choose to start and grow their businesses here.**

<b>A</b>	<b>B</b>	
I see myself and my community represented in this vision	I do not see myself or my community represented in this vision	What would you add or change about this vision statement?

**3 WHQC has vibrant neighborhoods. Young singles, families, children, and seniors live in diverse housing types throughout the area. People know their neighbors, and they work together to care for each other. Children walk and bicycle to their neighbors, and they walk and bicycle to their neighborhood schools. Every resident can find shopping, recreation, and open space within an easy walk from their homes.**

<b>A</b>	<b>B</b>	
I see myself and my community represented in this vision	I do not see myself or my community represented in this vision	What would you add or change about this vision statement?

**4 WHQC residents treasure the natural environment. The Northwest Branch of the Anacostia is healthy and vibrant. Solar panels gather energy on rooftops, community gardens dot the parks, and native species grace yards, parks, and open spaces. It is as easy as to walk and bike in WHQC as it is to drive. WHQC is connected to DC and the rest of Prince George's County through strong transit systems. Growth is phased, makes efficient use of land, and ensures the community is vibrant.**

<b>A</b>	<b>B</b>	
I see myself and my community represented in this vision	I do not see myself or my community represented in this vision	What would you add or change about this vision statement?

Which vision elements did we miss?

What types of priorities should we be thinking about as we develop goals for the following topics?

Neighborhoods, housing, and community facilities?

Absolute Priority
-------------------

Economic development and resiliency?

Supporting Priority
---------------------

Mobility?

Priority element of focus
---------------------------

Equity and inclusion?

Priority element of focus
---------------------------

Environment and sustainability?

Priority element of focus
---------------------------