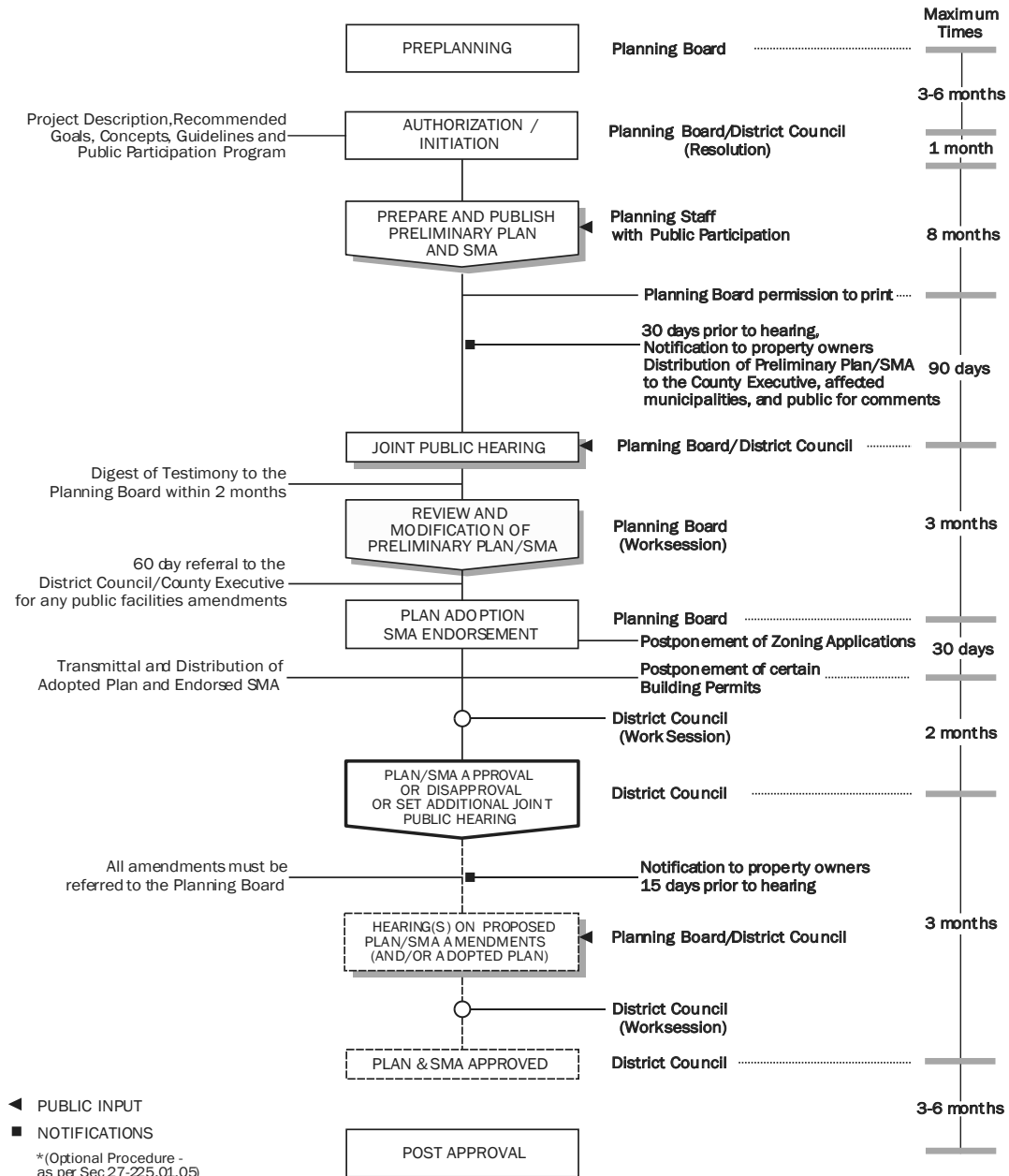


APPENDIX A: PROCEDURAL SEQUENCE CHART

PROCEDURAL SEQUENCE CHART
For the Concurrent Preparation of
Comprehensive Master Plans, Sector Plans, and Sectional Map Amendments*



ACKNOWLEDGMENTS

Fern V. Piret, Ph.D., Planning Director

Albert G. Dobbins III, AICP, Deputy Planning Director

PROJECT TEAM CORE MEMBERS

Ivy A. Lewis, AICP Chief, Community Planning Division

Teri Bond, Project Facilitator, North Section, Community Planning Division

**Vanessa C. Akins, Chief, Community Planning North Division

*Robert J. Duffy, AICP, Project Facilitator, Community Planning North Division

Roberto Duke, AICP, Project Manager, North Section, Community Planning Division

Hyojung Garland, LEED BD+C, Senior Planner, North Section, Community Planning Division

Sam White, Senior Planner, North Section, Community Planning Division

Judy D'Ambrosi, Senior Planner, Central Section, Community Planning Division

Betty Smoot, Senior Planner, Central Section, Community Planning Division

*Sara Chadwick Jensen, Senior Planner, Community Planning North Division

*Gary Thomas, Principal Planning Technician, Community Planning North Division

*Charlie Bailey, Intern, Community Planning North Division

Max Pastore, Intern, North Section, Community Planning Division

PROJECT TEAM RESOURCE MEMBERS

Carol Binns, Senior Planner, Department of Parks and Recreation

Jay Mangalvedhe, Senior Planner, Special Projects Section, Countywide Planning Division

Ted Kowaluk, Senior Planner, Special Projects Section, Countywide Planning Division

Frederick Stachura, Planner Coordinator, Historic Preservation Section, Countywide Planning Division

CJ Lammers, Master Environmental Planner, Countywide Planning Division

*Harold Foster, Planner Coordinator, Transportation Section, Countywide Planning Division

Faramarz Mokhtari, Planner Coordinator, Transportation Section, Countywide Planning Division

Daniel Janousek, Senior Planner, Transportation Section, Countywide Planning Division

TECHNICAL AND ADMINISTRATIVE ASSISTANCE

Susan Kelley, Administrative Manager, Office and Publications Services, Office of the Planning Director

Susan Smith, Publications Specialist, Publications and Graphics Section, Office of the Planning Director

Anika Jackson, Public Affairs Specialist, Office of the Chairman

*Crystal L. Prater, Public Affairs Specialist, Office of the Chairman

Mishelle Carson-Reeves, Programmer Analyst II, Data Systems Section, Information Management Division

*Martin Howes, Assistant Mapping and Graphic Supervisor, Geographic Information Services Section, Information Management Division

Mark Burt, GIS Specialist II, South Section, Community Planning Division

Briana Davis, Principal Administrative Assistant, Community Planning

Gena Tapscott-Cooper, Principal Administrative Assistant, Community Planning

Ralph Barrett, Supervisor, Office and Publications Services, Office of the Planning Director

M'Balu Abdullah, Senior IT Support Specialist, Web Development Section, Office of the Planning Director

Mandy Li, Programmer Analyst III, Web Development Section, Office of the Planning Director

CONSULTANT

Deana Rhodside, Ph.D., Rhodside & Harwell, Inc.

Sabra, Wang & Associates Inc.

Nelson Nygaard Associates

HR&A Advisors, Inc.

Dialogue Studio

SPECIAL THANKS TO:

Prince George's County Executive Office

Prince George's County Redevelopment Authority

Prince George's County Economic Development Corporation

Citizens, business and property owners, elected officials and county agencies

*Former Employee

**Former Chief

