

Charles Wade, Ph.D. and Kui Zhao, AICP
Research Section, Information Management Division
December 2021

A Synopsis: Census 2020 Data by Census Designated Place (CDP)

Census Designated Places

In Prince George's County ("the County"), Maryland, there are 27 incorporated municipalities and 58 unincorporated places. Collectively, they are named, census designated places (CDPs)¹. Between 2010 and 2020, there were two new CDPs: Cedar Heights with a population of 1,597 and Danville with 224 persons. Map 1 (page 2) portrays the 85 CDPs in the County. This report summarizes the recently (August 2021) Census data release as it applies to CDPs.

Total Population

According to Census 2020, Prince George's County has the second largest population of any in Maryland. The County's population is 967,201, following Montgomery County (1,062,061). Within the County, the top four most populous CDPs are Bowie, Clinton CDP, Chillum CDP, and College Park (Tables 1 and 2 in Appendix; Map 2 on page 3).

Included in the County's total population is group quarters population² and there are 19,683 institutional or non-institutional. The largest number, 10,749, is in College Park where the Maryland state flagship institution, the University of Maryland, is located. Those 10,749 students presumably reside in university dormitories on the campus³.

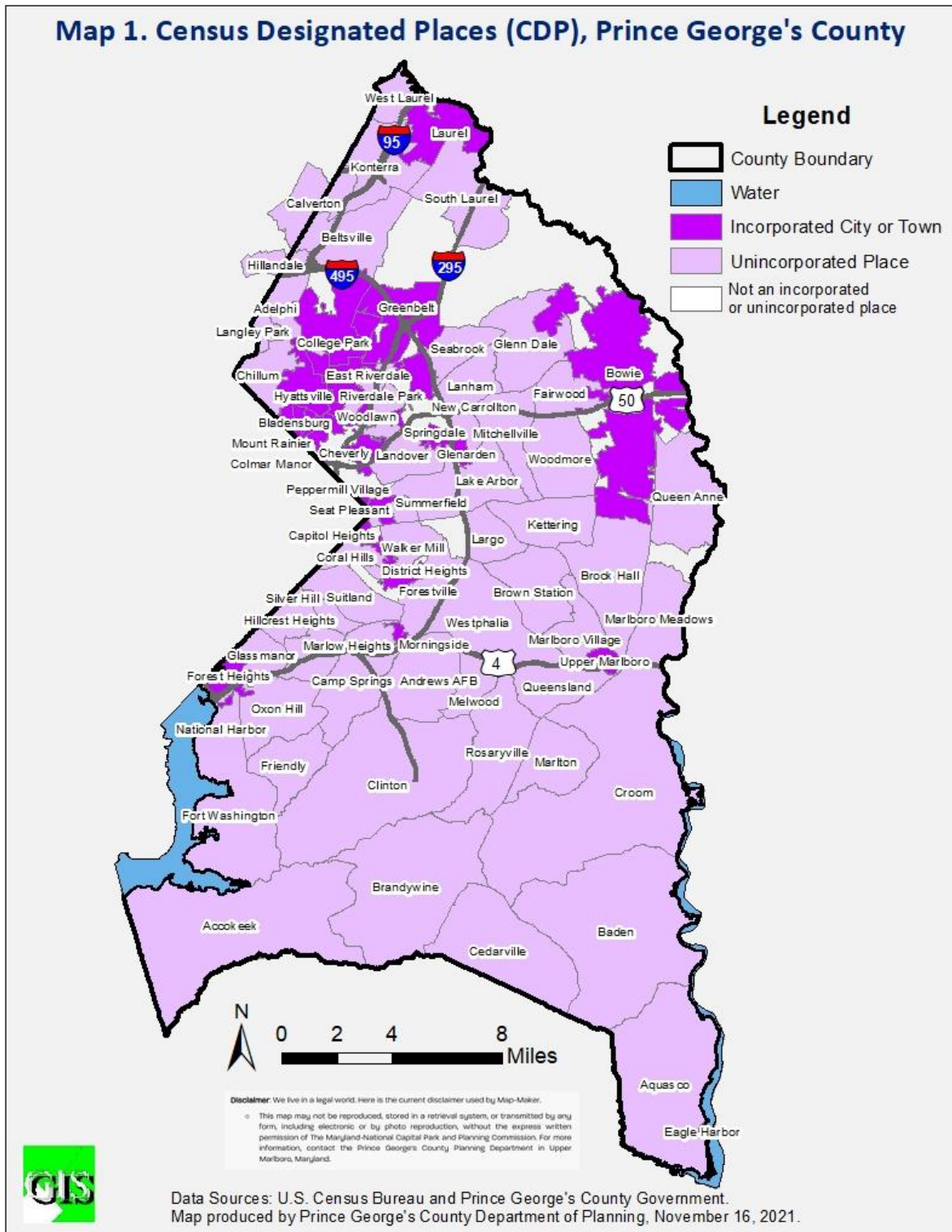
Bowie is the most populous City (58,329) in the County and Eagle Harbor is the smallest (67). Calverton showed the greatest population gains, increasing by 11,153 from 6,163 in 2010 to 17,316 in 2020. Hillandale had the greatest percent gain in total population at 199.48 percent, increasing from 1,928 in 2010 to 5,774 in 2020. On the other hand, Morningside experienced the greatest population loss, dropping from 2,015 in 2010 to 1,240 in 2020, a decline of 775 persons. It also had the largest percent loss at -38.46.

¹ Census designated places (CDPs) are statistical geographic entities representing closely settled, unincorporated communities that are locally recognized and identified by name. They are the statistical equivalents of incorporated places (Source: Federal Register, A Notice by the Census Bureau on 11/13/2018).

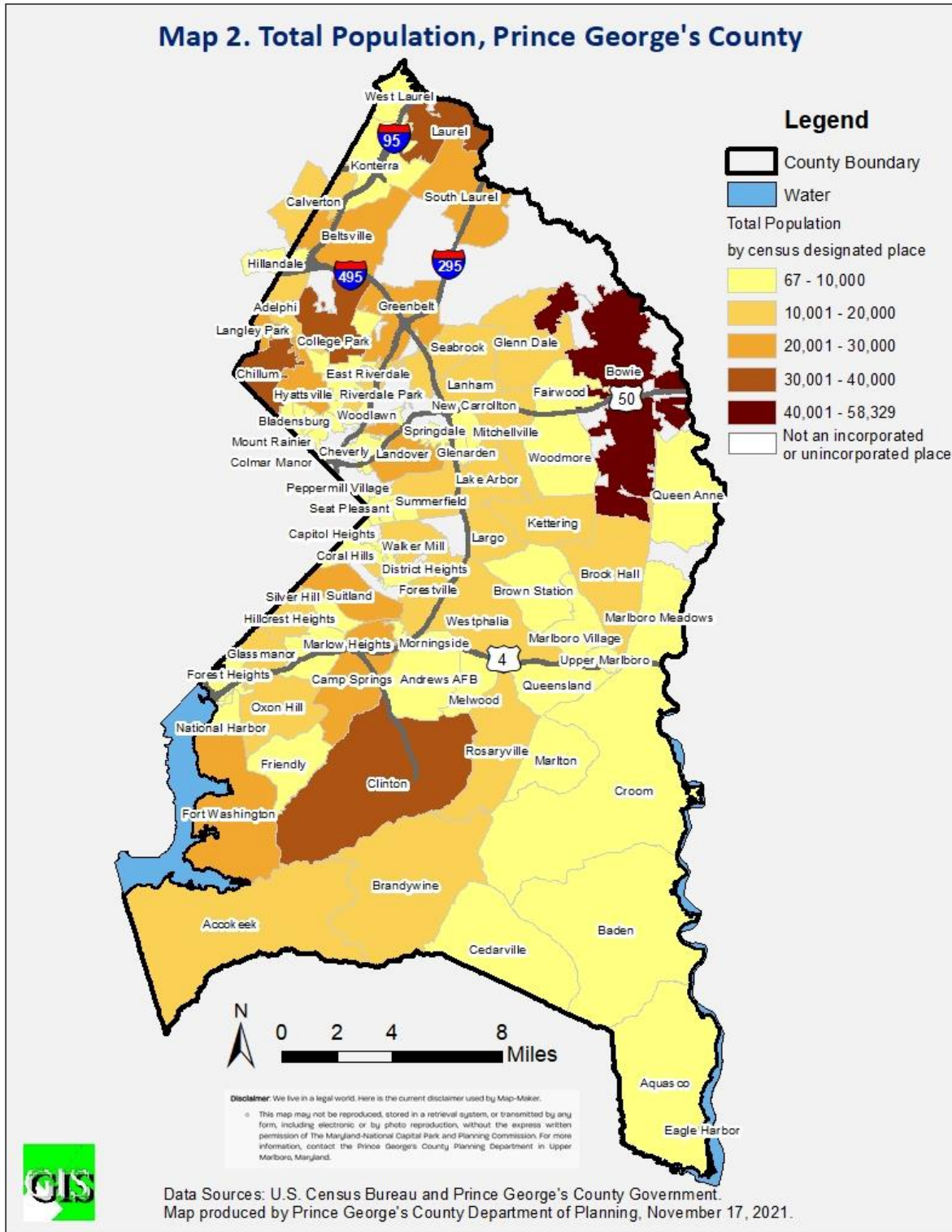
² Two general types of group quarters include institutional (nursing homes, mental hospitals or wards, hospitals or wards for chronically ill patients, hospices, and prison wards) and noninstitutional (college or university dormitories, military barracks, group homes, shelters, missions, and flophouses) (Source: U.S. Census Bureau).

³ College students living in on-campus housing are counted through their university as part of our Group Quarters (The U.S. Census Bureau Statement on Modifying 2020 Census Operations to Make Sure College Students are Counted, March 15, 2020).

Map 1. Census Designated Places (CDP), Prince George's County



Map 2. Total Population, Prince George's County



Housing Occupancy

There are 359,957 housing units in Prince George's County, including 342,216 occupied units and 17,741 vacant units. The overall vacancy rate is 4.93 percent countywide. Occupied units are also called households by the U.S. Census Bureau definition.

Tables 1 and 2 in Appendix depict that Bowie City has the largest number of housing units, followed by Clinton CDP, Laurel, and Chillum CDP. Eagle Harbor has the highest vacancy rate, in which among 53 units, 30 are vacant. Other places with a high vacancy rate are College Park, Cedarville CDP, Andrews Air Force Base, and National Harbor.

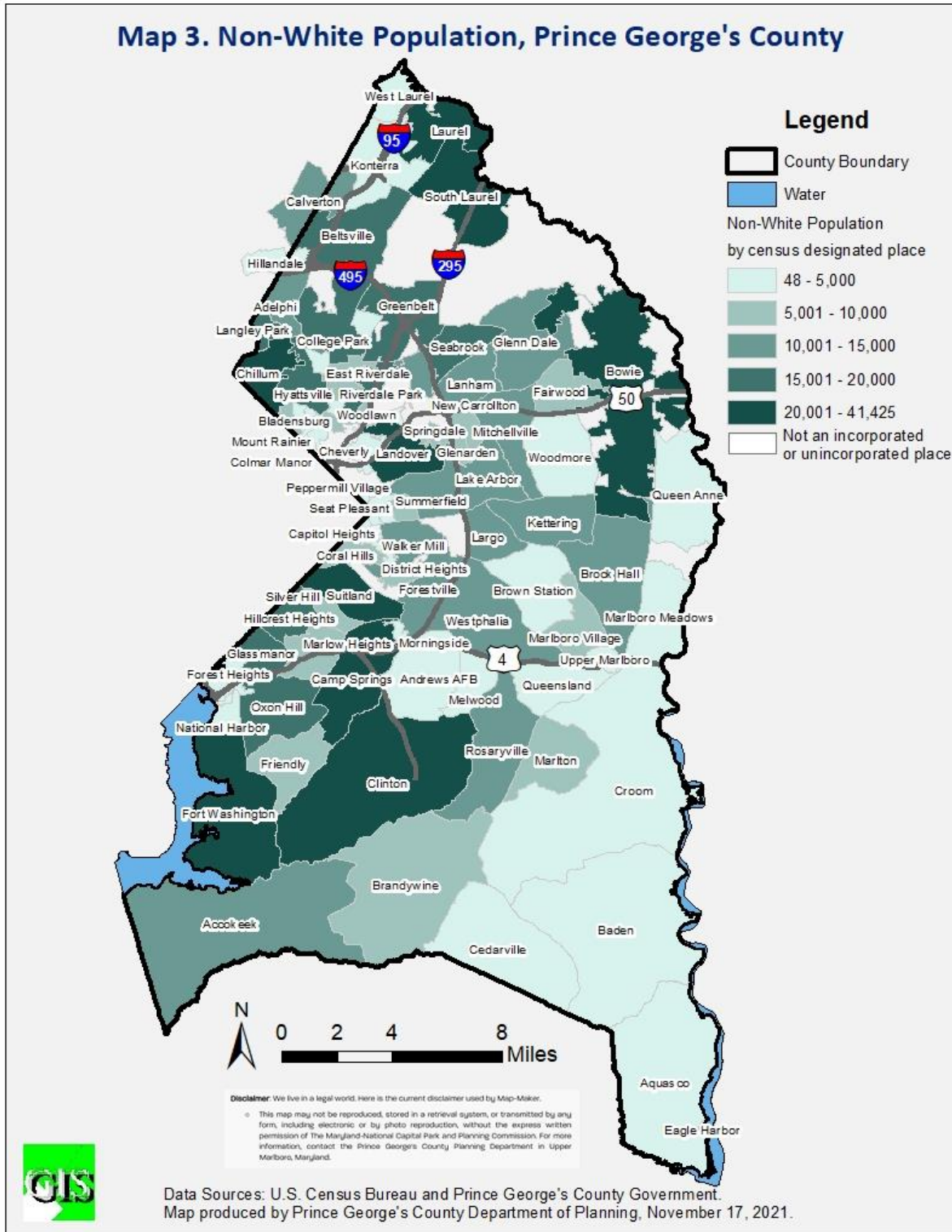
The number of housing units when examined per CDP varies from Eagle Harbor reporting only 56 to Bowie with 21,560. Across all CDPs in the County, the average number of housing units is approximately 4,400. In addition, consistent with countywide data as reported, vacancy rates for housing units across CDPs in the County is typically low (under 7 percent). There were some exceptions for higher vacancy rates, such as Andrews Air Force Base (10.9 percent), Cedarville (14.6 percent), College Park (16.8 percent), Eagle Harbor (56.6 percent), and National Harbor (10.9 percent). For some explanation, Eagle Harbor and Cedarville are smaller areas with fewer housing options and availability than other CDPs in general. Andrews AFB and College Park, on the other hand, have more regular movement in and out of their localities than other CDPs.

Race and Ethnicity

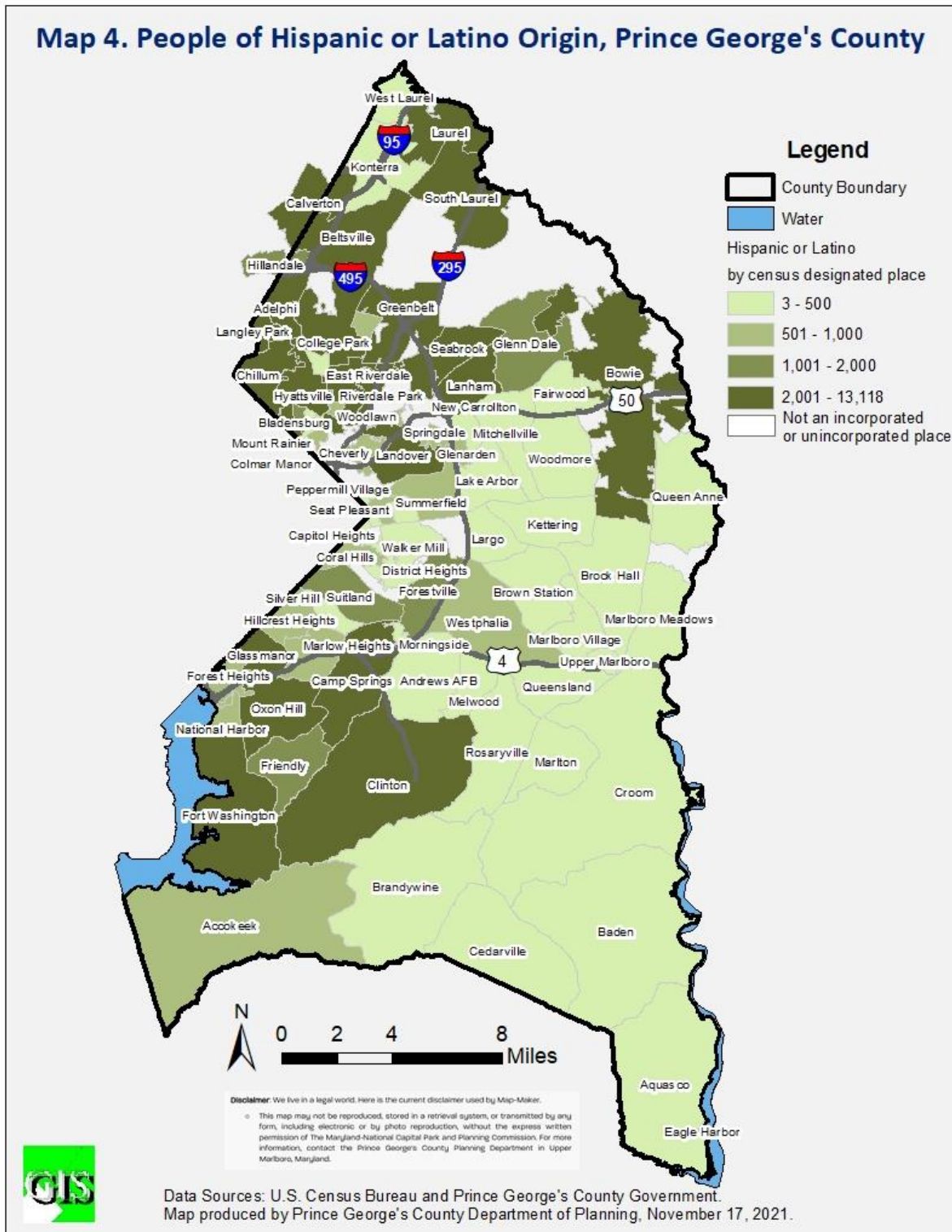
Prince George's County is one of five majority-minority jurisdictions in Maryland, where black or African American, American Indian, or Alaska Native, Asian American or Pacific Islander, some other races, and two or more races combined outnumber the white population. Among 967,201 persons in the County, 124,863 are white alone, representing 12.91 percent of the County's total population. Map 3 on page 5 displays the geographic distribution of all non-white population in the County.

In addition, there are 205,463 persons who identified themselves as the Hispanic or Latino origin. This is the ethnic group that can be of any race, according to the U.S. Census Bureau. The Not Hispanic or Latino white alone population accounts for 109,060 or 11.27 percent of the total population in the County. As indicated in Table 3 and Table 4 in Appendix; Map 4 page 6, within the County, Chillum CDP and Langley Park CDP have the largest number of persons of this ethnic group. According to the U.S. Census Bureau, people who identify with the terms "Hispanic" or "Latino" are those who classify themselves in one of the specific Hispanic or Latino categories listed on its various survey questionnaires – "Mexican, Mexican Am., Chicano" or "Puerto Rican" or "Cuban" – as well as those who indicate that they are "another Hispanic, Latino, or Spanish origin."

Map 3. Non-White Population, Prince George's County



Map 4. People of Hispanic or Latino Origin, Prince George's County



Countywide, 578,703 or 59.83 percent of its total population are black or African Americans, which is the largest people of color⁴ racial group in the County. Table 3 and Table 4 in Appendix, Map 5 on page 8 illustrate that Bowie City, Clinton CDP, and Suitland CDP have the largest number of black or African American population.

Asian Americans or Pacific Islanders (AAPI) are among the fastest growing racial group, nationwide, statewide, and in the metropolitan regions. In Prince George's County, there are 42,421 Asian Americans or Pacific Islanders, amounting to 4.39 percent. Tables 3 and 4 show that the largest AAPI population resides in College Park City primarily due to students from Montgomery or Howard counties and from overseas.

The County has 8,935 persons who are American Indian or Alaska Native. The largest number of them is in Langley Park CDP. Moreover, there are 139,685 persons in some other races and 72,594 in two or more races. The increasing significance in these two racial groups could be attributed to demographic changes since 2010 or the improvements to the design of the two separate questions for race and ethnicity, data processing and coding, which enabled a more thorough and accurate depiction of how people prefer to self-identify (U.S. Census Bureau, 2020 Census Illuminates Racial and Ethnic Composition of the Country, August 12, 2021).

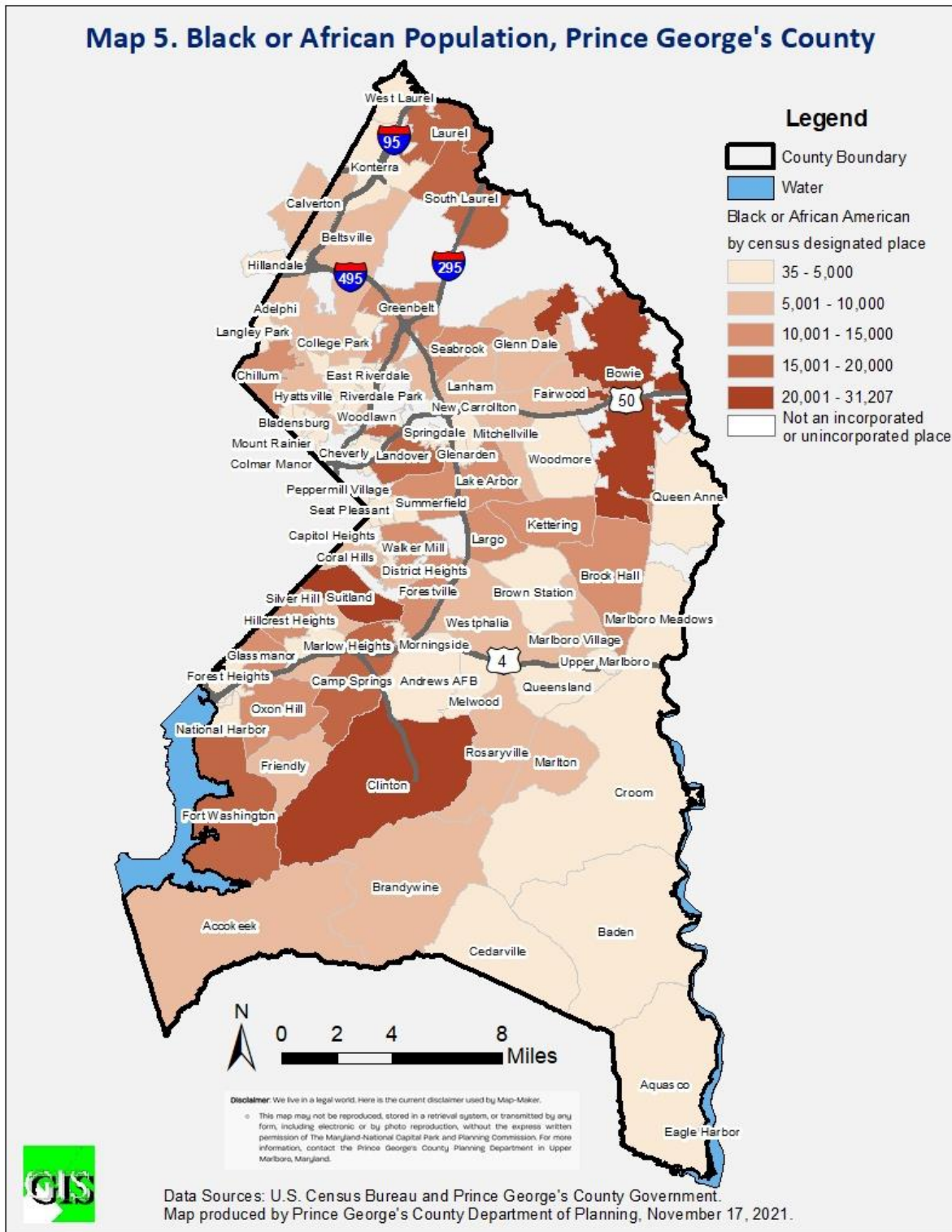
The white population was the only racial demographic that declined in Prince George's County between 2010 and 2020. This change is evident when examining demographic changes for the individual towns of the county and is likely linked to both in-migration and out-migration of different groups.

Generally, Native Americans, Asians, and Pacific Islanders did not show major shifts when examined within each CDP, despite some changes at the county level. Overall, the greatest and most dramatic demographic increases were in the Other, Multiracial, and Hispanic categories. Of the towns with more substantial populations, some notable changes include Glassmanor (18,430) with a 477.27 percent increase in "Other" races, with a 194.39 percent increase in Hispanic ethnicity, and Landover (25,998) with a 227.53 percent increase in Multiracial. The Hispanic population, who can be of any race, has increased substantially in some towns.

Other towns showcase the changes in the Census's acceptance of self-identification and the subjectivity involved in how someone can respond. For example, Suitland showed little change in total population, but had noticeable shifts in its demographic composition from 2010 to 2020, likely because some respondents there opted to identify as more than one race or ethnicity.

⁴ People of color is a term primarily used in the United States and Canada to describe any person who is not white. It does not solely refer to African Americans; rather, it encompasses all non-white groups and emphasizes the common experiences of systemic racism (The National Institutes of Health, www.edi.nih.gov).

Map 5. Black or African Population, Prince George's County



These census data reflect not only great diversity in the County's population, but also changing definitions on race and racial composition. Respondents may select multiple racial or ethnic categories on the Census questionnaire. In fact, the Census noted with the release of 2020 data that changes in the "Other" and multiracial categories is attributable to emerging multiracial populations. As such, the demographic changes between the Censuses may not be as dramatic as some of the raw numbers suggest.

The remaining page is intentionally left blank and continues to Appendix on pages 10 through 15.

Appendix

Table 1. Total Population, Group Quarters Population, and Housing Occupancy by Incorporated City or Town

Incorporated Place	Total Population	Group Quarters					Housing Unit	Vacant Unit	Vacancy Rate
		Total	Correction	Juvenile	College	Military			
Berwyn Heights town	3,345	25	0	0	0	0	1,048	31	2.96%
Bladensburg town	9,657	8	0	0	0	0	3,819	180	4.71%
Bowie city	58,329	739	0	0	0	0	21,560	569	2.64%
Brentwood town	3,828	66	0	0	0	0	1,346	75	5.57%
Capitol Heights town	4,050	4	0	0	0	0	1,593	89	5.59%
Cheverly town	6,170	21	0	0	0	0	2,380	102	4.29%
College Park city	34,740	10,798	0	0	10,749	0	11,539	1,933	16.75%
Colmar Manor town	1,588	1	0	0	0	0	418	14	3.35%
Cottage City town	1,335	3	0	0	0	0	510	37	7.25%
District Heights city	5,959	8	0	0	0	0	2,201	90	4.09%
Eagle Harbor town	67	0	0	0	0	0	53	30	56.60%
Edmonston town	1,617	0	0	0	0	0	481	14	2.91%
Fairmount Heights town	1,528	0	0	0	0	0	577	51	8.84%
Forest Heights town	2,658	0	0	0	0	0	957	71	7.42%
Glenarden city	6,402	13	0	0	0	0	2,215	69	3.12%
Greenbelt city	24,921	21	21	0	0	0	10,789	545	5.05%
Hyattsville city	21,187	205	0	11	0	0	8,673	731	8.43%
Landover Hills town	1,815	2	0	0	0	0	504	19	3.77%
Laurel city	30,060	195	0	0	0	0	12,964	541	4.17%
Morningside town	1,240	0	0	0	0	0	451	32	7.10%
Mount Rainier city	8,333	14	0	0	0	0	3,655	180	4.92%
New Carrollton city	13,715	53	0	0	0	0	4,603	190	4.13%
North Brentwood town	593	0	0	0	0	0	194	6	3.09%
Riverdale Park town	7,351	138	0	0	0	0	2,215	86	3.88%
Seat Pleasant city	4,522	20	0	0	0	0	1,802	102	5.66%
University Park town	2,454	17	0	0	0	0	928	42	4.53%
Upper Marlboro town	652	0	0	0	0	0	308	23	7.47%

Source: U.S. Census Bureau, Census 2020.

Table 2a. Total Population, Group Quarters Population, and Housing Occupancy by Unincorporated Place

Unincorporated Place	Total Population	Group Quarters					Housing Unit	Vacant Unit	Vacancy Rate
		Total	Correction	Juvenile	College	Military			
Accokeek CDP	13,927	39	0	0	0	0	4,813	151	3.14%
Adelphi CDP	16,823	181	0	0	0	0	5,598	332	5.93%
Andrews AFB CDP	3,025	295	0	0	0	295	1,137	124	10.91%
Aquasco CDP	913	0	0	0	0	0	386	32	8.29%
Baden CDP	2,114	8	0	0	0	0	838	48	5.73%
Beltsville CDP	20,133	501	0	4	0	0	7,105	387	5.45%
Brandywine CDP	10,550	0	0	0	0	0	3,629	126	3.47%
Brock Hall CDP	13,181	17	0	0	0	0	4,484	85	1.90%
Brown Station CDP	3,298	30	0	7	0	0	1,163	31	2.67%
Calverton CDP	17,316	313	0	0	0	0	6,360	288	4.53%
Camp Springs CDP	22,734	53	0	0	0	0	9,114	506	5.55%
Cedar Heights CDP	1,597	23	0	10	0	0	579	26	4.49%
Cedarville CDP	639	0	0	0	0	0	357	52	14.57%
Chillum CDP	36,039	515	13	22	66	0	12,133	664	5.47%
Clinton CDP	38,760	625	0	0	0	0	13,725	417	3.04%
Coral Hills CDP	9,997	61	0	0	0	0	3,954	201	5.08%
Croom CDP	2,720	5	0	0	0	0	1,063	52	4.89%
East Riverdale CDP	18,459	17	0	0	0	0	4,847	195	4.02%
Fairwood CDP	7,983	11	0	0	0	0	2,472	39	1.58%
Forestville CDP	12,831	132	0	0	0	0	5,091	235	4.62%
Fort Washington CDP	24,261	248	0	0	0	0	8,910	323	3.63%
Friendly CDP	9,937	27	0	0	0	0	3,410	84	2.46%
Glassmanor CDP	18,430	29	0	0	0	0	7,501	332	4.43%
Glenn Dale CDP	14,698	46	0	0	0	0	4,760	147	3.09%
Hillandale CDP	5,774	36	0	0	0	0	1,877	160	8.52%
Hillcrest Heights CDP	15,793	33	0	0	0	0	7,182	447	6.22%
Kettering CDP	14,424	99	0	0	0	0	5,666	164	2.89%
Konterra CDP	3,158	0	0	0	0	0	1,319	41	3.11%

continued to Table 2b.

Table 2b. Total Population, Group Quarters Population, and Housing Occupancy by Unincorporated Place

Unincorporated Place	Total Population	Group Quarters					Housing Unit	Vacant Unit	Vacancy Rate
		Total	Correction	Juvenile	College	Military			
Lake Arbor CDP	14,541	482	0	0	0	0	6,192	221	3.57%
Landover CDP	25,998	39	0	0	0	0	9,327	558	5.98%
Langley Park CDP	20,126	18	0	0	0	0	5,457	169	3.10%
Lanham CDP	11,282	60	0	0	0	0	3,224	88	2.73%
Largo CDP	11,605	66	0	0	0	0	4,930	228	4.62%
Marlboro Meadows CDP	3,655	3	0	0	0	0	1,308	43	3.29%
Marlboro Village CDP	9,221	653	647	0	0	0	3,819	170	4.45%
Marlow Heights CDP	6,169	18	0	0	0	0	2,577	142	5.51%
Marlton CDP	9,802	36	0	0	0	0	3,770	127	3.37%
Maryland Park CDP	965	11	0	0	0	0	327	22	6.73%
Melwood CDP	3,977	4	0	0	0	0	1,593	58	3.64%
Mitchellville CDP	11,136	106	0	0	0	0	3,871	86	2.22%
National Harbor CDP	5,509	0	0	0	0	0	2,851	311	10.91%
Oxon Hill CDP	18,791	26	0	0	0	0	7,852	477	6.07%
Peppermill Village CDP	5,264	0	0	0	0	0	1,904	88	4.62%
Queen Anne CDP	1,405	0	0	0	0	0	498	15	3.01%
Queensland CDP	2,191	12	0	0	0	0	747	19	2.54%
Rosaryville CDP	11,548	65	0	35	0	0	3,965	104	2.62%
Seabrook CDP	19,627	205	0	0	0	0	6,339	234	3.69%
Silver Hill CDP	6,381	33	0	0	0	0	3,171	207	6.53%
South Laurel CDP	29,602	427	0	0	0	0	11,404	565	4.95%
Springdale CDP	5,301	3	0	0	0	0	1,634	47	2.88%
Suitland CDP	25,839	73	0	0	0	0	11,414	776	6.80%
Summerfield CDP	14,758	46	0	0	0	0	6,143	343	5.58%
Temple Hills CDP	8,350	15	0	0	0	0	3,683	213	5.78%
Walker Mill CDP	12,187	44	0	0	0	0	5,035	192	3.81%
West Laurel CDP	4,428	41	0	0	0	0	1,565	42	2.68%
Westphalia CDP	11,770	13	0	0	0	0	4,651	200	4.30%
Woodlawn CDP	7,541	16	0	0	0	0	2,058	64	3.11%
Woodmore CDP	4,513	0	0	0	0	0	1,570	53	3.38%

Source: U.S. Census Bureau, Census 2020.

Table 3. Total Population and Population by Race or Ethnicity by Incorporated City or Town

Incorporated Place	Total Population	Hispanic or Latino	Non Hispanic White	White	Black or African American	American Indian or Alaska Native	Asian American or Pacific Islander	Some Other Races	Two or More Races
Berwyn Heights town	3,345	822	1,094	1,382	412	61	268	780	442
Bladensburg town	9,657	2,542	253	570	5,252	189	141	2,837	668
Bowie city	58,329	3,557	14,025	16,904	31,207	220	2,679	2,726	4,593
Brentwood town	3,828	1,360	484	686	1,101	95	92	1,422	432
Capitol Heights town	4,050	366	72	120	3,321	25	15	352	217
Cheverly town	6,170	579	1,507	2,002	2,906	27	148	550	537
College Park city	34,740	4,102	15,888	17,453	5,167	177	5,989	3,087	2,867
Colmar Manor town	1,588	626	83	160	410	32	144	682	160
Cottage City town	1,335	420	140	224	467	15	77	409	143
District Heights city	5,959	354	127	159	5,068	49	44	391	248
Eagle Harbor town	67	3	14	19	35	0	0	1	12
Edmonston town	1,617	647	149	251	396	21	14	696	239
Fairmount Heights town	1,528	220	13	52	1,100	6	31	221	118
Forest Heights town	2,658	558	107	167	1,544	10	81	674	182
Glenarden city	6,402	637	83	167	4,996	52	83	674	430
Greenbelt city	24,921	2,847	4,600	5,581	12,051	153	2,354	2,838	1,944
Hyattsville city	21,187	5,736	3,918	5,247	6,709	343	803	5,701	2,384
Landover Hills town	1,815	700	126	200	545	61	23	767	219
Laurel city	30,060	4,314	4,497	5,518	15,116	287	2,482	3,761	2,896
Morningside town	1,240	228	182	243	605	8	16	264	104
Mount Rainier city	8,333	2,163	1,100	1,521	3,383	111	198	2,201	919
New Carrollton city	13,715	3,366	675	985	7,281	205	435	3,548	1,261
North Brentwood town	593	152	32	69	299	0	12	160	53
Riverdale Park town	7,351	2,655	1,027	1,645	1,548	231	362	2,717	848
Seat Pleasant city	4,522	511	68	129	3,525	25	44	491	308
University Park town	2,454	209	1,326	1,649	249	20	154	110	272
Upper Marlboro town	652	34	148	174	388	5	6	43	36

Source: U.S. Census Bureau, Census 2020.

Table 4a. Total Population and Population by Race or Ethnicity by Unincorporated Place

Unincorporated Place	Total Population	Hispanic or Latino	Non Hispanic White	White	Black or African American	American Indian or Alaska Native	Asian American or Pacific Islander	Some Other Races	Two or More Races
Accokeek CDP	13,927	727	1,774	2,103	9,449	77	664	696	938
Adelphi CDP	16,823	5,903	1,373	2,138	5,070	334	1,399	5,425	2,457
Andrews AFB CDP	3,025	309	1,012	1,486	786	37	171	141	404
Aquasco CDP	913	28	385	461	356	6	2	26	62
Baden CDP	2,114	131	889	1,050	722	9	23	110	200
Beltsville CDP	20,133	5,470	3,999	4,816	5,564	264	1,667	5,637	2,185
Brandywine CDP	10,550	482	888	1,065	8,129	57	237	408	654
Brock Hall CDP	13,181	306	463	535	11,568	19	230	193	636
Brown Station CDP	3,298	149	139	163	2,725	9	78	103	220
Calverton CDP	17,316	2,385	3,036	3,652	7,495	104	2,673	2,070	1,322
Camp Springs CDP	22,734	2,134	1,259	1,618	17,005	141	470	2,214	1,286
Cedar Heights CDP	1,597	142	14	24	1,315	4	13	157	84
Cedarville CDP	639	50	296	324	167	27	11	52	58
Chillum CDP	36,039	13,118	998	2,446	14,760	758	790	13,626	3,659
Clinton CDP	38,760	2,733	2,091	2,542	30,194	201	985	2,479	2,359
Coral Hills CDP	9,997	909	130	222	8,152	38	70	980	535
Croom CDP	2,720	183	983	1,116	1,134	21	31	168	250
East Riverdale CDP	18,459	7,789	791	1,734	4,310	593	1,075	8,652	2,095
Fairwood CDP	7,983	244	441	585	6,149	7	615	138	489
Forestville CDP	12,831	1,010	364	481	10,472	51	134	1,127	566
Fort Washington CDP	24,261	2,343	1,935	2,492	15,507	87	2,271	2,179	1,725
Friendly CDP	9,937	1,224	492	708	6,758	44	530	1,265	632
Glassmanor CDP	18,430	2,513	226	461	13,700	131	193	3,048	897
Glenn Dale CDP	14,698	1,240	2,161	2,591	9,037	72	854	1,195	949
Hillandale CDP	5,774	1,450	1,277	1,633	1,423	75	661	1,203	779
Hillcrest Heights CDP	15,793	772	284	351	13,754	103	136	835	614
Kettering CDP	14,424	297	275	331	13,099	23	209	252	510
Konterra CDP	3,158	298	507	584	1,594	21	490	211	258

continued to Table 4b.

Table 4b. Total Population and Population by Race or Ethnicity by Unincorporated Place

Unincorporated Place	Total Population	Hispanic or Latino	Non Hispanic White	White	Black or African American	American Indian or Alaska Native	Asian American or Pacific Islander	Some Other Races	Two or More Races
Lake Arbor CDP	14,541	368	738	789	12,569	26	320	234	603
Landover CDP	25,998	4,663	493	1,035	16,836	247	689	5,347	1,844
Langley Park CDP	20,126	11,521	404	1,664	2,195	1,017	408	11,607	3,235
Lanham CDP	11,282	2,547	520	821	6,069	122	365	2,955	950
Largo CDP	11,605	379	220	264	10,223	40	192	291	595
Marlboro Meadows CDP	3,655	210	246	289	2,931	36	37	193	169
Marlboro Village CDP	9,221	267	359	430	8,120	25	94	152	400
Marlow Heights CDP	6,169	679	201	271	4,653	60	116	782	287
Marlton CDP	9,802	255	716	822	8,169	41	91	178	501
Maryland Park CDP	965	180	18	46	663	4	6	147	99
Melwood CDP	3,977	478	373	446	2,609	55	57	544	266
Mitchellville CDP	11,136	446	446	523	9,302	38	346	391	536
National Harbor CDP	5,509	712	738	908	3,026	37	439	660	439
Oxon Hill CDP	18,791	2,751	755	1,123	12,150	146	1,050	3,103	1,219
Peppermill Village CDP	5,264	475	74	104	4,305	24	30	542	259
Queen Anne CDP	1,405	87	438	500	691	3	50	65	96
Queensland CDP	2,191	87	266	302	1,611	15	30	99	134
Rosaryville CDP	11,548	434	707	831	9,489	26	197	368	637
Seabrook CDP	19,627	2,866	1,346	1,757	12,008	225	1,292	3,005	1,340
Silver Hill CDP	6,381	210	152	191	5,728	13	35	195	219
South Laurel CDP	29,602	4,053	3,513	4,387	16,911	302	1,780	3,662	2,560
Springdale CDP	5,301	388	44	80	4,332	15	157	438	279
Suitland CDP	25,839	1,291	448	638	22,576	74	173	1,393	985
Summerfield CDP	14,758	714	235	332	12,889	62	149	634	692
Temple Hills CDP	8,350	536	279	391	6,881	22	124	547	385
Walker Mill CDP	12,187	500	206	283	10,823	43	68	525	445
West Laurel CDP	4,428	493	2,012	2,367	829	26	317	411	478
Westphalia CDP	11,770	798	507	662	9,375	63	202	721	747
Woodlawn CDP	7,541	2,847	258	663	2,560	140	193	3,065	920
Woodmore CDP	4,513	148	307	369	3,631	19	92	120	282

Source: U.S. Census Bureau, Census 2020.

