



# Pupil Yield Factors & Public School Clusters

2022–23 Update



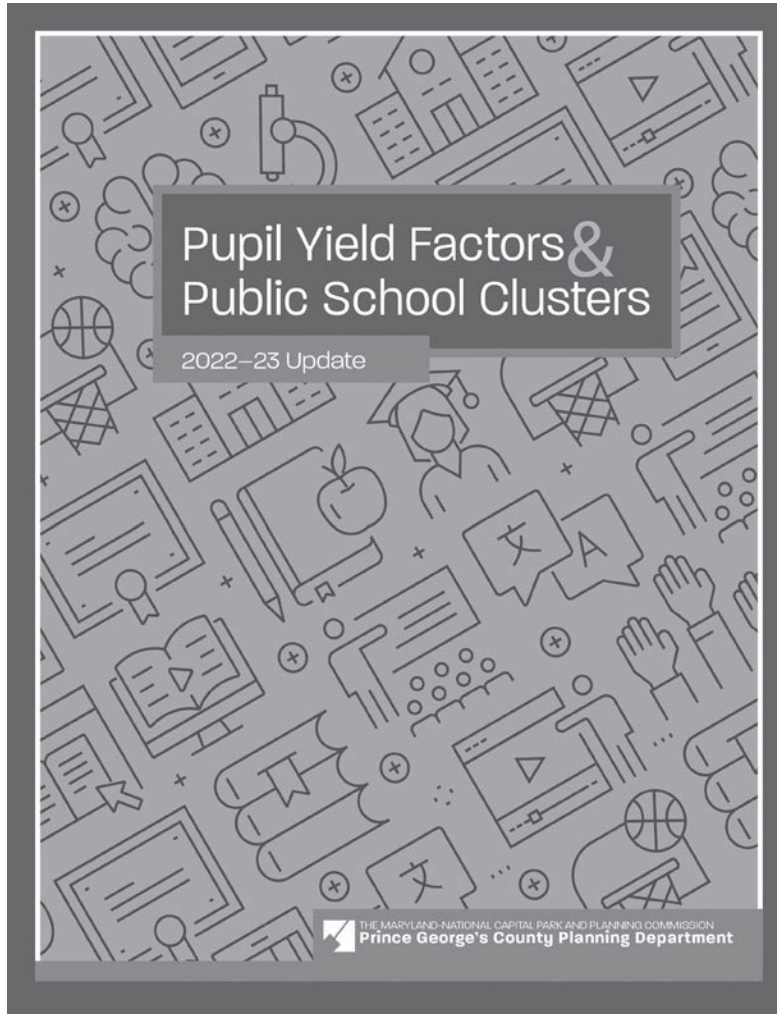
THE MARYLAND-NATIONAL CAPITAL PARK AND PLANNING COMMISSION  
**Prince George's County Planning Department**

# Abstract

Date August 2023  
Title Pupil Yield Factors & Public School Clusters 2022–23 Update  
Author The Maryland-National Capital Park and Planning Commission  
Subject The pupil yield factors and school clusters for Prince George's County  
Planning Department, Maryland  
Source of copies The Maryland-National Capital Park and Planning Commission  
14741 Governor Oden Bowie Drive  
Upper Marlboro, MD 20772  
Series number 985232405  
Number of pages 68

All photos from iStock:

- |   |   |
|---|---|
| vi. ID: 504534788; FatCamera            | 21. ID: 920498140; kali9                |
| 1. ID: 1038322996; skynesher            | 24. ID: 1340725957; SolStock            |
| 3. ID: 484217960; kali9                 | 30. ID: 826212368; monkeybusinessimages |
| 5. ID: 178429814; monkeybusinessimages  | 36. ID: 950886726; SDI Productions      |
| 7. ID: 1347197297; jacoblund            | 37. ID: 1430138102 Eduard Figueres      |
| 10. ID: 887315916; monkeybusinessimages | 41. ID: 1453883557; FatCamera           |
| 11. ID: 1430133631; Eduard Figueres     | 45. ID: 1354472037; xavierarnau         |
| 16. ID: 610771616; SDI Productions      |   |



August 2023

**The Maryland-National Capital Park and Planning Commission**

Prince George's County Planning Department

14741 Governor Oden Bowie Drive

Upper Marlboro, MD 20772

[www.pgplanning.org](http://www.pgplanning.org)

# The Maryland-National Capital Park and Planning Commission

Peter A. Shapiro, Chair  
 Artie L. Harris, Jr., Vice Chair

## Officers

Asuntha Chiang-Smith, Executive Director  
 Gavin Cohen, Secretary-Treasurer  
 Debra Borden, General Counsel

The Maryland-National Capital Park and Planning Commission (M-NCPPC) is a bicounty agency, created by the General Assembly of Maryland in 1927. The Commission's geographic authority extends to the great majority of Montgomery and Prince George's Counties: the Maryland-Washington Regional District (M-NCPPC planning jurisdiction) comprises 1,001 square miles, while the Metropolitan District (parks) comprises 919 square miles, in the two counties.

The Commission has three major functions:

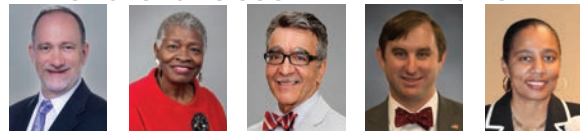
- The preparation, adoption, and, from time to time, amendment or extension of the General Plan for the physical development of the Maryland-Washington Regional District.
- The acquisition, development, operation, and maintenance of a public park system.
- In Prince George's County only, the operation of the entire county public recreation program.

The Commission operates in each county through a Planning Board appointed by and responsible to the County government. All local plans, recommendations on zoning amendments, administration of subdivision regulations, and general administration of parks are responsibilities of the Planning Boards.

The Prince George's County Planning Department:

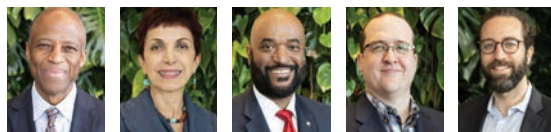
- Our mission is to help preserve, protect and manage the County's resources by providing the highest quality planning services and growth management guidance and by facilitating effective intergovernmental and citizen involvement through education and technical assistance.
- Our vision is to be a model planning department of responsive and respected staff who provide superior planning and technical services and work cooperatively with decision makers, citizens, and other agencies to continuously improve development quality and the environment and act as a catalyst for positive change

## PRINCE GEORGE'S COUNTY PLANNING BOARD



Peter A. Shapiro, chair  
 Dorothy F. Bailey, vice chair  
 Manuel R. Geraldo  
 William Doerner  
 A. Shuanise Washington

## MONTGOMERY COUNTY PLANNING BOARD



Artie L. Harris, Jr., Chair  
 Mitra Pedoeem, Vice Chair  
 Shawn Bartley  
 James Hedrick  
 Josh Linden

# Prince George's County



Angela Alsobrooks,  
County Executive

## County Council

The County Council has three main responsibilities in the planning process: (1) setting policy, (2) plan approval, and (3) plan implementation. Applicable policies are incorporated into area plans, functional plans, and the general plan. The Council, after holding a hearing on the plan adopted by the Planning Board, may approve the plan as adopted, approve the plan with amendments based on the public record, or disapprove the plan and return it to the Planning Board for revision. Implementation is primarily through adoption of the annual Capital Improvement Program, the annual Budget, the water and sewer plan, and adoption of zoning map amendments.

## COUNCIL MEMBERS

Thomas E. Dernoga, Chair, 1st District

Wala Blegay, Vice Chair, 6th District

Wanika B. Fisher, 2nd District

Eric C. Olson, 3rd District

Ingrid S. Watson, 4th District,

Jolene Ivey, 5th District

Krystal Oriadha, 7th District

Edward P. Burroughs III, 8th District

Sydney J. Harrison, 9th District

Mel Franklin, At-large

Calvin S. Hawkins, II, At-large

**Clerk of the Council:** Donna J. Brown





# Table of Contents

<b>Introduction</b> .....	<b>2</b>
<b>Part I. Pupil Yield Factors</b> .....	<b>3</b>
Subdivision Regulations .....	3
Methodology and Results .....	4
<b>Part II. Public School Clusters</b> .....	<b>7</b>
Legislative Background .....	7
Methodology for Cluster Updates .....	8
Cluster Area 1 .....	11
Cluster Area 2 .....	15
Cluster Area 3 .....	23
Cluster Area 4 .....	29
Cluster Area 5 .....	37
Cluster Area 6 .....	41
School Utilization Rates .....	45
<b>Appendices</b> .....	<b>49</b>
Appendix A: September 30, 2022 Public School Enrollment .....	50
Appendix B: Adopted Subdivision Regulations .....	59
Appendix C: Elementary School Map Index .....	63
<b>Acknowledgments</b> .....	<b>68</b>









# Introduction

This study updates the pupil yield factors that are used in the regulatory review of preliminary plans of subdivision for measuring their impact on public schools. To determine such an impact, pupil yield factors are calculated in accordance with student address data and development information.

This study includes two parts. The first part focuses on the methodology and results of the updated pupil yield numbers. The second part of the report updates the school clusters for the public schools' review of proposed preliminary development plans.

Reflecting the trends nationwide, the Covid-19 pandemic has had a profound impact on public school enrollments in Prince George's County. The County's school enrollment numbers plummeted significantly during the Covid-19 stricken years. In the 2022 to 2023 school year, the County's student enrollment increased to exceed the 2021 enrollment but still is lower than the 2019-2020 and even the 2020-2021 school years as shown in **Table 1**.

**TABLE 1.** The Student Enrollment, 2019–2022

School Year	Total Enrollment
September 30, 2019	135,110
September 30, 2020	131,162
September 30, 2021	128,271
September 30, 2022	130,798

\*Adjusted for Half-Day Pre-Kindergarten  
Source: Prince George's County Public Schools

# PART I

## Pupil Yield Factors



### Subdivision Regulations

The term “pupil yield factor” is defined in the Prince George’s County’s Subdivision Regulations (Section 24- 2300 Definitions) as, “The estimated number of elementary, middle, and high school students per dwelling unit, as determined by the Planning Director, from information provided by the Superintendent of the Prince George’s County Public Schools.”

In Prince George’s County, the pupil yield computation is part of the subdivision review process. The Planning Department staff reviews the proposed preliminary subdivision plan and identifies the number and type of residential units. Staff then multiplies those numbers by the pupil yield factor to determine the projected number of elementary, middle, and high school students to be generated by the proposed preliminary subdivision.

The Planning Department’s pupil yield factors are applied to development review purposes rather than for the County’s Public Schools (PGCPS) enrollment projections. PGCPS updates enrollment projections yearly and includes them in the Annual Educational Facilities Master Plan, per requirements by the Maryland Department of Planning.



# Methodology and Results

PGCPS provides the official September 30 student enrollment (**Appendix A**) and geocoded student addresses for grades K through 12. The Planning Department staff joins the geocoded student addresses to its PropertyInfo on ArcGIS. PropertyInfo is based off the Maryland State Department of Assessments and Taxation (SDAT) data relating to property boundaries to represent land use and ownership information more closely in the County.

There are several steps associated with obtaining pupil yield factors. Planning staff combines PropertyInfo with planimetric data and summarizes the joined data by housing type. The housing types include single-family detached, single-family attached (including townhouses), and multifamily.

The total number of housing units is aggregated by housing type using PropertyInfo. Then, a tally of the number of student addresses by school type by housing type is computed. Spatially joining geocoded student addresses to PropertyInfo considers housing units that have more than one student in a residential units in the same school or different school types.

Based on geocoded student addresses from the official September 30, 2022 enrollment, staff calculates the 2022 pupil yield factors as presented in **Table 2**.







**TABLE 2.** Pupil Yield Factors

Type of Unit	School Type		
	Elementary	Middle	High
Single-family Detached	0.121	0.068	0.094
Single-family Attached	0.146	0.069	0.087
Multifamily	0.179	0.095	0.131

Sources:

1. Prince George’s County Public Schools
2. Prince George’s County Planning Department

**The pupil yield factor is derived using the following formula:**

$$\frac{\text{The sum of student addresses by school type by housing type}}{\text{Total housing units by housing type}}$$

**TABLE 3.** Hypothetical Pupil Yield Computation

Housing Types	# of Dwelling Units	School Types						Total Yields
		Elementary		Middle		High		
		Factors	Yield	Factors	Yield	Factors	Yield	
SFD	100	0.121	12.1	0.068	6.8	0.094	9.4	28.3
SFA	100	0.146	14.6	0.069	6.9	0.087	8.7	30.2
MF	100	0.179	17.9	0.095	9.5	0.131	13.1	40.6

Sources:

1. Prince George’s County Public Schools
2. Prince George’s County Planning Department

**The formula is expressed as:**

$$\frac{\text{Number of dwelling units} \times \text{Pupil yield factor}}{\text{Pupil yields (or students) generated by the proposed preliminary subdivision}}$$

# PART II

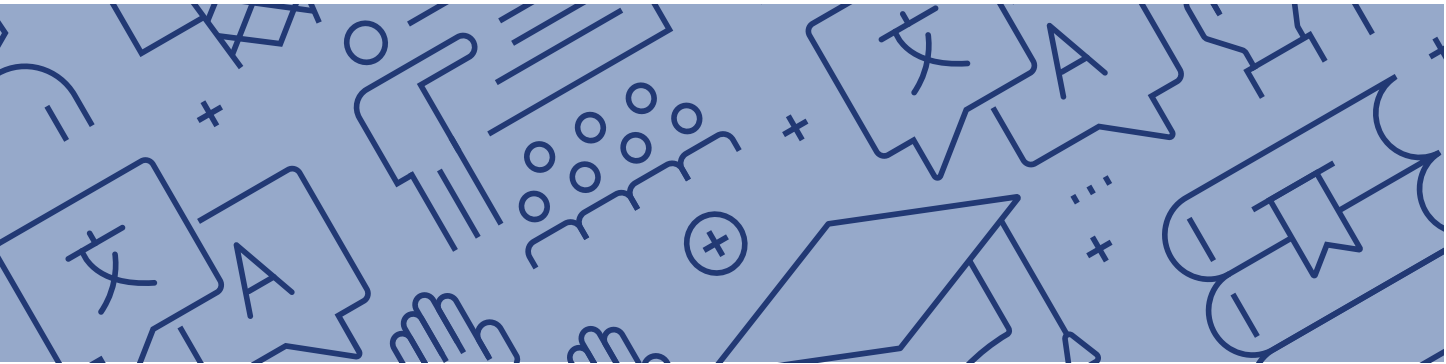
## Public School Clusters

### Legislative Background



On October 23, 2018, the Prince George's County Council adopted CR-015-2018 (DR-3) and amendments were adopted in CR-088-2021. The new Subdivision Regulations aim to streamline procedures and encourage appropriate input into the subdivision review process. The effective date of these Regulations was April 1, 2022. Under the general requirements of the Regulations, the Prince George's County Planning Director is given the responsibility to evaluate school capacity at the time of a preliminary subdivision plan for residential development.

Section 24-4510 - Schools Adequacy (Appendix B) of the Adopted Subdivision Regulations retains the requirements for the adequacy determination to utilize the school clusters to gauge the impact of a proposed preliminary subdivision on public schools where the proposed development would be located. The school clusters with utilization rates that are greater than 105 percent currently will not halt new residential development. The utilization rate is the percentage of adjusted full-time enrollment divided by the state rated capacity.

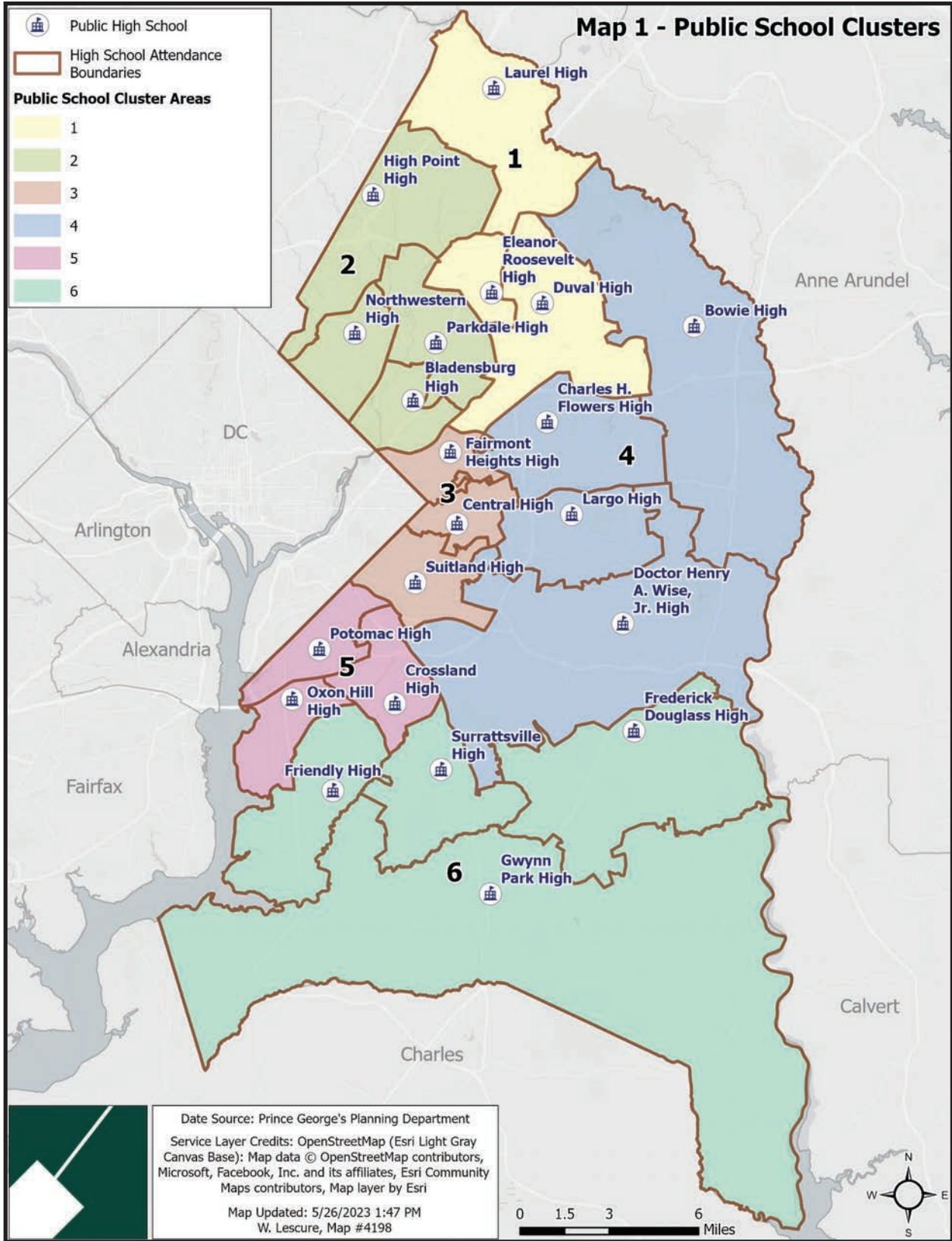


## Methodology for Cluster Updates

The school clusters are based on the County Public Schools' feeder system. The feeder system, a matrix developed by the PGCPs staff, is intended to provide students and parents with the flow of schools that a student will attend as they move from one type to the next. This will allow groups of students to stay together as they feed from their elementary school to middle school, and finally to high school.

It is worth noting that some elementary schools feed into two or multiple middle schools. So do some middle schools. These are the occurrences in Prince George's County and some other counties in Maryland, such as the neighboring Howard County. Consequently, a countywide comparison of all schools' utilization rates shall not be compiled in a single chart to avoid a misleading impression and drawing a mistaken conclusion.

To update the public school clusters, the Planning Department staff used the PGCPs SY2021-2022 feeder patterns that continue to the 2022-2023 school year, which include six groupings of high schools and their associated feeder middle and elementary schools. Each cluster consists of three or more high schools and their feeding middle and elementary schools. **Map 1** displays all six clusters by high school district in the County.





Not all public schools are included in this report. Language immersion schools, art schools, regional schools and so forth that do not have neighborhood attendance areas are not included in the calculation of cluster area utilizations. Public schools without a neighborhood attendance area are not included in PGCPs' feeder system because these schools generally draw their enrollment from a wide geographic area. These schools constitute a relatively fixed portion of enrollment and capacity, and have their enrollment managed.

In the following descriptions of each cluster, four different types of tables are grouped together. The first table (4, 8, 12, 16, 20, or 24) stipulates the feeder pattern of the high, middle, and elementary schools. The next three, associated with the preceding table, impart each elementary, middle, and high school's enrollment as of September 30, 2022, the state-rated capacity, and the utilization rate.



# CLUSTER 1



**TABLE 4.** Cluster Area 1 School Feeder Pattern

High School	Middle School	Elementary School
<b>DuVal High</b>		
	<b>Kenmoor Middle</b>	Dodge Park Elementary
		Judge Sylvania W. Woods Sr. Elem
		William Paca Elementary
	<b>Thomas Johnson Middle</b>	Catherine T. Reed Elementary
		Gaywood Elementary
		Glenn Dale Elementary
		James Mc Henry Elementary
		Robert Frost Elementary
		Seabrook Elementary
		Woodmore Elementary
<b>Eleanor Roosevelt High</b>		
	<b>Greenbelt Middle</b>	Greenbelt Elementary
		Magnolia Elementary
		Spring Hill Elementary
<b>Laurel High</b>		
	<b>Dwight D. Eisenhower Middle</b>	Deerfield Run Elementary
		James H. Harrison Elementary
		Laurel Elementary
		Montpelier Elementary
		Oaklands Elementary
		Scotchtown Hills Elementary
	<b>Martin Luther King Jr. Middle</b>	Bond Mill Elementary
		Vansville Elementary

Source: Prince George's County Public Schools

**TABLE 5.** Cluster Area 1 Elementary Schools' Enrollment and Utilization

Elementary Schools	September 30, 2022	State Rated Capacity	Building Utilization*
Bond Mill Elementary	481	479	100.42%
Catherine T. Reed Elementary	472	457	103.28%
Deerfield Run Elementary	577	570	101.23%
Dodge Park Elementary	522	511	102.15%
Gaywood Elementary	497	386	128.76%
Glenn Dale Elementary	504	404	124.75%
Glenridge Elementary	769	828	92.87%
Greenbelt Elementary	573	568	100.88%
James H. Harrison Elementary	302	342	88.05%
James McHenry Elementary	693	537	129.05%
Judge Sylvania W. Woods Sr. Elementary	632	719	87.90%
Laurel Elementary	566	493	114.81%
Magnolia Elementary	434	449	96.66%
Montpelier Elementary	562	609	92.28%
Oaklands Elementary	395	408	96.81%
Robert Frost Elementary	268	309	86.73%
Scotchtown Hills Elementary	612	790	77.47%
Seabrook Elementary	316	409	77.26%
Springhill Lake Elementary	790	561	140.82%
Vansville Elementary	635	836	75.96%
William Paca Elementary	559	601	93.01%
Woodmore Elementary	451	570	79.12%
<b>Total Cluster Area 1</b>	<b>11,610</b>	<b>11,837</b>	<b>98.08%</b>

\*Building Utilization is the percentage of the Adjusted Enrollment to the State Rated Capacity

Source: Prince George's County Public Schools



**TABLE 6.** Cluster Area 1 Middle Schools' Enrollment and Utilization

Middle Schools	September 30, 2022	State Rated Capacity	Building Utilization*
Dwight D. Eisenhower Middle	1,084	1,049	103.34%
Greenbelt Middle	1,342	1,101	121.89%
Kenmoor Middle	929	695	133.67%
Martin Luther King Jr Middle	911	850	107.18%
Thomas Johnson Middle	1,274	1,030	123.69%
<b>Total Cluster Area 1</b>	<b>5,540</b>	<b>4,725</b>	<b>117.25%</b>

\*Building Utilization is the percentage of the Adjusted Enrollment to the State Rated Capacity  
*Source:* Prince George's County Public Schools

**TABLE 7.** Cluster Area 1 High Schools' Enrollment and Utilization

High Schools	September 30, 2022	State Rated Capacity	Building Utilization*
DuVal High School	2,503	2,258	110.85%
Eleanor Roosevelt High	2,526	2,096	120.52%
Laurel High	2,134	1,867	114.30%
<b>Total Cluster Area 1</b>	<b>7,163</b>	<b>6,221</b>	<b>115.14%</b>

\*Building Utilization is the percentage of the Adjusted Enrollment to the State Rated Capacity  
*Source:* Prince George's County Public Schools



# CLUSTER 2



**TABLE 8.** Cluster Area 2 School Feeder Pattern

High School	Middle School	Elementary School
<b>Bladensburg High</b>		
	<b>Charles Carroll Middle</b>	Cooper Lane Elementary
		Gladys Noon Spellman Elementary
	<b>G. James Gholson Middle</b>	Gladys Noon Spellman Elementary
	<b>Hyattsville Middle</b>	Riverdale Elementary
	<b>William Wirt Middle</b>	Bladensburg Elementary
		Gladys Noon Spellman Elementary
		Port Towns Elementary
		Riverdale Elementary
		Rogers Heights Elementary
		Templeton Elementary
<b>High Point High</b>		
	<b>Beltsville Academy</b>	Beltsville Academy
	<b>Buck Lodge Middle</b>	Adelphi Elementary
		Carole Highlands Elementary
		Cherokee Lane Elementary
		Cool Spring Elementary
		Langley Pk-McCormick Elementary
		Mary Harris "Mother" Jones Elem
	<b>Greenbelt Middle</b>	Hollywood Elementary
	<b>Martin Luther King Jr. Middle</b>	Calverton Elementary
		Vansville Elementary
	<b>Nicholas Orem Middle</b>	Carole Highlands Elementary
		Ridgecrest Elementary
		Rosa Parks Elementary

Source: Prince George's County Public Schools



**TABLE 8 (continued).** Cluster Area 2 School Feeder Pattern

High School	Middle School	Elementary School
<b>Northwestern High</b>		
	<b>Greenbelt Middle</b>	Paint Branch Elementary
	<b>Hyattsville Middle</b>	Chillum Elementary
		Hyattsville Elementary
		Mt Rainier Elementary
		Riverdale Elementary
		Thomas S. Stone Elementary
		University Park Elementary
	<b>Nicholas Orem Middle</b>	Chillum Elementary
		Edward M. Felegy Elementary
		Lewisdale Elementary
		Ridgecrest Elementary
		Rosa L. Parks Elementary
		University Park Elementary
<b>Parkdale High</b>		
	<b>Charles Carroll Middle</b>	Beacon Heights Elementary
		Carrollton Elementary
		Glenridge Elementary
		Judge Sylvania W Woods Sr Elem
		Lamont Elementary
		Robert Frost Elementary
		Woodridge Elementary
	<b>Greenbelt Middle</b>	Berwyn Heights Elementary
		Hollywood Elementary
		Paint Branch Elementary
	<b>William Wirt Middle</b>	Berwyn Heights Elementary
		Riverdale Elementary
		Templeton Elementary

Source: Prince George's County Public Schools

**TABLE 9.** Cluster Area 2 Elementary Schools' Enrollment and Utilization

Elementary Schools	September 30, 2022	State Rated Capacity	Building Utilization*
Adelphi Elementary	683	451	151.44%
Beacon Heights Elementary	381	362	105.25%
Beltsville Academy	1,102	848	129.95%
Berwyn Heights Elementary	480	429	111.89%
Bladensburg Elementary	710	698	101.72%
Calverton Elementary	836	589	141.94%
Carole Highlands Elementary	484	535	90.47%
Carrollton Elementary	580	559	103.76%
Cherokee Lane Elementary	619	408	151.72%
Chillum Elementary	368	335	109.85%
Cool Spring Elementary	797	535	148.97%
Cooper Lane Elementary	475	494	96.15%
Edward M. Felegy Elementary	726	879	82.59%
Gladys Noon Spellman Elementary	483	564	85.64%
Glenridge Elementary	769	828	92.87%
Hollywood Elementary	484	339	142.77%
Hyattsville Elementary	423	406	104.19%
Judge Sylvania W. Woods Sr. Elem	632	719	87.90%

\*Building Utilization is the percentage of the Adjusted Enrollment to the State Rated Capacity

Source: Prince George's County Public Schools

**TABLE 9 (continued).** Cluster Area 2 Elementary Schools' Enrollment and Utilization

Elementary Schools	September 30, 2022	State Rated Capacity	Building Utilization*
Lamont Elementary	453	503	90.06%
Langley Park-McCormick Elementary	756	486	155.56%
Lewisdale Elementary	617	471	131.00%
Mary Harris "Mother" Jones Elementary	984	769	127.96%
Mt. Rainier Elementary	328	406	80.79%
Paint Branch Elementary	357	357	100.00%
Port Towns Elementary	955	809	118.05%
Ridgecrest Elementary	636	693	91.77%
Riverdale Elementary	630	563	111.90%
Robert Frost Elementary	268	309	86.73%
Rogers Heights Elementary	686	610	112.46%
Rosa Parks Elementary	663	810	81.85%
Templeton Elementary	799	565	141.42%
Thomas S. Stone Elementary	432	638	67.71%
University Park Elementary	437	565	77.35%
Vansville Elementary	635	836	75.96%
Woodridge Elementary	300	337	89.02%
<b>Total Cluster Area 2</b>	<b>20,968</b>	<b>19,705</b>	<b>106.41%</b>

\*Building Utilization is the percentage of the Adjusted Enrollment to the State Rated Capacity

Source: Prince George's County Public Schools





**TABLE 10.** Cluster Area 2 Middle Schools' Enrollment and Utilization

Middle Schools	September 30, 2022	State Rated Capacity	Building Utilization*
Beltsville Academy	1,102	848	129.95%
Buck Lodge Middle	1,242	1,017	122.12%
Charles Carroll Middle	1,228	817	150.31%
G. James Gholson Middle	867	870	99.66%
Greenbelt Middle	1,342	1,101	121.89%
Hyattsville Middle	705	787	89.58%
Martin Luther King Jr. Middle	911	850	107.18%
Nicholas Orem Middle	1,138	829	137.27%
William Wirt Middle	1,246	850	146.59%
<b>Total Cluster Area 2</b>	<b>9,781</b>	<b>7,969</b>	<b>122.74%</b>

\*Building Utilization is the percentage of the Adjusted Enrollment to the State Rated Capacity  
*Source:* Prince George's County Public Schools

**TABLE 11.** Cluster Area 2 High Schools' Enrollment and Utilization

High Schools	September 30, 2022	State Rated Capacity	Building Utilization*
Bladensburg High	2,164	1,785	121.23%
High Point High	3,003	2,081	144.31%
Northwestern High	2,346	2,340	100.26%
Parkdale High	2,561	2,288	111.93%
<b>Total Cluster Area 2</b>	<b>10,074</b>	<b>8,494</b>	<b>118.60%</b>

\*Building Utilization is the percentage of the Adjusted Enrollment to the State Rated Capacity  
*Source:* Prince George's County Public Schools



# CLUSTER 3



**TABLE 12.** Cluster Area 3 School Feeder Pattern

High School	Middle School	Elementary School
<b>Central High</b>		
	<b>G. James Gholson Middle</b>	Carmody Hills Elementary
		Cora L Rice Elementary
		Highland Park Elementary
		Seat Pleasant Elementary
	<b>Walker Mill Middle</b>	Capitol Heights Elementary
		Concord Elementary
		Doswell E. Brooks Elementary
		John H Bayne Elementary
	<b>William W. Hall Academy</b>	William W. Hall Academy
<b>Fairmont Heights High</b>		
	<b>G. James Gholson Middle</b>	Carmody Hills Elementary
		Columbia Park Elementary
		Cora L. Rice Elementary
		Dodge Park Elementary
		Highland Park Elementary
		Robert R. Gray Elementary
		Seat Pleasant Elementary

Source: Prince George's County Public Schools



**TABLE 12 (continued).** Cluster Area 3 School Feeder Pattern

High School	Middle School	Elementary School
Suitland High	<b>Andrew Jackson Academy</b>	Andrew Jackson Academy
	<b>Drew-Freeman Middle</b>	Bradbury Heights Elementary
		Concord Elementary
		District Heights Elementary
		Francis Scott Key Elementary
		Suitland Elementary
		William Beanes Elementary
	<b>Samuel P. Massie Academy</b>	Samuel P. Massie Academy
	<b>Walker Mill Middle</b>	Concord Elementary
		Doswell E Brooks Elementary
		John H. Bayne Elementary
	<b>William W. Hall Academy</b>	William W. Hall Academy

Source: Prince George's County Public Schools

**TABLE 13.** Cluster Area 3 Elementary Schools' Enrollment and Utilization

Elementary Schools	September 30, 2022	State Rated Capacity	Building Utilization*
Andrew Jackson Academy	407	793	51.32%
Bradbury Heights Elementary	444	782	56.78%
Capitol Heights Elementary	289	363	79.61%
Carmody Hills Elementary	443	451	98.23%
Columbia Park Elementary	498	515	96.70%
Concord Elementary	275	451	60.98%
Cora L. Rice Elementary	526	696	75.57%
District Heights Elementary	355	515	68.93%
Dodge Park Elementary	522	511	102.15%
Doswell E. Brooks Elementary	225	523	43.02%
Francis Scott Key Elementary	420	677	62.04%
Highland Park Elementary	271	574	47.21%
John H. Bayne Elementary	322	542	59.41%
Robert R Gray Elementary	427	808	52.85%
Samuel P. Massie Academy	520	769	67.62%
Seat Pleasant Elementary	331	354	93.50%
Suitland Elementary	519	702	73.93%
William Beanes Elementary	382	560	68.21%
William W. Hall Academy	496	709	69.96%
<b>Total Cluster Area 3</b>	<b>7,672</b>	<b>11,295</b>	<b>67.92%</b>

\*Building Utilization is the percentage of the Adjusted Enrollment to the State Rated Capacity

Source: Prince George's County Public Schools

**TABLE 14.** Cluster Area 3 Middle Schools' Enrollment and Utilization

Middle Schools	September 30, 2022	State Rated Capacity	Building Utilization*
Andrew Jackson Academy	407	793	51.32%
Drew-Freeman Middle	833	890	93.60%
G. James Gholson Middle	867	870	99.66%
Samuel P. Massie Academy	520	769	67.62%
Walker Mill Middle	693	850	81.53%
William W. Hall Academy	496	709	69.96%
<b>Total Cluster Area 3</b>	<b>3,816</b>	<b>4,881</b>	<b>78.18%</b>

\*Building Utilization is the percentage of the Adjusted Enrollment to the State Rated Capacity  
*Source:* Prince George's County Public Schools

**TABLE 15.** Cluster Area 3 High Schools' Enrollment and Utilization

High Schools	September 30, 2022	State Rated Capacity	Building Utilization*
Central High	877	1,143	76.73%
Fairmont Heights High	1,039	1,123	92.52%
Suitland High	1,834	2,447	74.95%
<b>Total Cluster Area 3</b>	<b>3,750</b>	<b>4,713</b>	<b>79.57%</b>

\*Building Utilization is the percentage of the Adjusted Enrollment to the State Rated Capacity  
*Source:* Prince George's County Public Schools





# CLUSTER 4



**TABLE 16.** Cluster Area 4 School Feeder Pattern

High School	Middle School	Elementary School
<b>Bowie High</b>		
	<b>Benjamin Tasker Middle</b>	
		Kenilworth Elementary
		Northview Elementary
		Pointer Ridge Elementary
		Tulip Grove Elementary
		Woodmore Elementary
	<b>Samuel Ogle Middle</b>	
		High Bridge Elementary
		Rockledge Elementary
		Whitehall Elementary
		Yorktown Elementary
<b>Charles Herbert Flowers High</b>		
	<b>Ernest Everett Just Middle</b>	
		Ardmore Elementary
		Kingsford Elementary
		Lake Arbor Elementary
		Woodmore Elementary
	<b>G. James Gholson Middle</b>	
		Cora L Rice Elementary
	<b>Kenmoor Middle</b>	
		Judge Sylvania W. Woods Sr. Elementary
		William Paca Elementary
<b>Dr. Henry A. Wise Jr. High</b>		
	<b>Andrew Jackson Academy</b>	
		Andrew Jackson Academy
	<b>Drew-Freeman Middle</b>	
		Longfields Elementary
		William Beanes Elementary

Source: Prince George's County Public Schools

**TABLE 16 (continued).** Cluster Area 4 School Feeder Pattern

High School	Middle School	Elementary School
<b>Dr. Henry A Wise Jr. High (continued)</b>		
	<b>Gwynn Park Middle</b>	
		Marlton Elementary
	<b>James Madison Middle</b>	
		Barack Obama Elementary
		Melwood Elementary
		Patuxent Elementary
	<b>Kettering Middle</b>	
		Arrowhead Elementary
		Perrywood Elementary
	<b>Stephen Decatur Middle</b>	
		Francis T. Evans Elementary
	<b>Thurgood Marshall Middle</b>	
		Princeton Elementary
	<b>Walker Mill Middle</b>	
		North Forestville Elementary
<b>Largo High</b>		
	<b>Ernest Everett Just Middle</b>	
		Lake Arbor Elementary
	<b>Kettering Middle</b>	
		Arrowhead Elementary
		Kettering Elementary
		Perrywood Elementary
	<b>Walker Mill Middle</b>	
		John H. Bayne Elementary
		North Forestville Elementary

Source: Prince George's County Public Schools

**TABLE 17.** Cluster Area 4 Elementary Schools' Enrollment and Utilization

Elementary Schools	September 30, 2022	State Rated Capacity	Building Utilization*
Andrew Jackson Academy	407	793	51.32%
Ardmore Elementary	417	523	79.73%
Arrowhead Elementary	406	434	93.55%
Barack Obama Elementary	746	834	89.45%
Cora L. Rice Elementary	526	696	75.57%
Francis T Evans Elementary	350	454	77.09%
High Bridge Elementary	342	371	92.18%
John H. Bayne Elementary	322	542	59.41%
Judge Sylvania W Woods Sr Elementary	632	719	87.90%
Kenilworth Elementary	392	448	87.50%
Kettering Elementary	407	589	69.10%
Kingsford Elementary	447	750	59.60%
Lake Arbor Elementary	545	796	68.47%
Lake Arbor Elementary	545	796	68.47%
Longfields Elementary	295	474	62.24%
Marlton Elementary	309	489	63.19%
Melwood Elementary	450	633	71.09%

\*Building Utilization is the percentage of the Adjusted Enrollment to the State Rated Capacity

Source: Prince George's County Public Schools



**TABLE 17 (continued).** Cluster Area 4 Elementary Schools' Enrollment and Utilization

<b>Elementary Schools</b>	<b>September 30, 2022</b>	<b>State Rated Capacity</b>	<b>Building Utilization*</b>
North Forestville Elementary	284	438	64.84%
Northview Elementary	567	797	71.14%
Patuxent Elementary	289	451	64.08%
Perrywood Elementary	517	800	64.63%
Pointer Ridge Elementary	318	596	53.36%
Princeton Elementary	327	448	72.99%
Rockledge Elementary	341	454	75.11%
Tulip Grove Elementary	370	457	80.96%
Whitehall Elementary	566	411	137.71%
William Beanes Elementary	382	560	68.21%
William Paca Elementary	559	601	93.01%
Woodmore Elementary	451	570	79.12%
Yorktown Elementary	343	457	75.05%
<b>Total Cluster Area 4</b>	<b>12,852</b>	<b>17,381</b>	<b>73.94%</b>

\*Building Utilization is the percentage of the Adjusted Enrollment to the State Rated Capacity

Source: Prince George's County Public Schools

**TABLE 18.** Cluster Area 4 Middle Schools' Enrollment and Utilization

<b>Middle Schools</b>	<b>September 30, 2022</b>	<b>State Rated Capacity</b>	<b>Building Utilization*</b>
Andrew Jackson Academy	407	793	51.32%
Benjamin Tasker Middle	1,044	1,040	100.38%
Drew-Freeman Middle	833	890	93.60%
Ernest Everett Just Middle	795	824	96.48%
G. James Gholson Middle	867	870	99.66%
Gwynn Park Middle	711	765	92.94%
James Madison Middle	873	850	102.71%
Kenmoor Middle	929	695	133.67%
Kettering Middle	915	985	92.89%
Samuel Ogle Middle	795	935	85.03%
Stephen Decatur Middle	781	901	86.68%
Thurgood Marshall Middle	704	923	76.27%
Walker Mill Middle	693	850	81.53%
<b>Total Cluster Area 4</b>	<b>10,347</b>	<b>11,321</b>	<b>91.40%</b>

\*Building Utilization is the percentage of the Adjusted Enrollment to the State Rated Capacity

Source: Prince George's County Public Schools

**TABLE 19.** Cluster Area 4 High Schools' Enrollment and Utilization

High Schools	September 30, 2022	State Rated Capacity	Building Utilization*
Bowie High	2,460	2,772	88.74%
Charles Herbert Flowers High	2,569	2,174	118.17%
Dr. Henry A. Wise Jr. High	2,257	2,518	89.63%
Largo High	939	1,365	68.79%
<b>Total Cluster Area 4</b>	<b>8,225</b>	<b>8,829</b>	<b>93.16%</b>

\*Building Utilization is the percentage of the Adjusted Enrollment to the State Rated Capacity

Source: Prince George's County Public Schools



# CLUSTER 5



**TABLE 20.** Cluster Area 5 School Feeder Pattern

High School	Middle School	Elementary School
<b>Crossland High</b>		
	<b>Benjamin Stoddert Middle</b>	Barnaby Manor Elementary
		Hillcrest Heights Elementary
	<b>Isaac J. Gourdine Middle</b>	Avalon Elementary
	<b>Thurgood Marshall Middle</b>	Allenwood Elementary
		Avalon Elementary
		Hillcrest Heights Elementary
		J. Frank Dent Elementary
		Samuel Chase Elementary
		Suitland Elementary
<b>Oxon Hill High</b>		
	<b>Isaac J. Gourdine Middle</b>	Apple Grove Elementary
	<b>Oxon Hill Middle</b>	Apple Grove Elementary
		Flintstone Elementary
		Fort Foote Elementary
		Indian Queen Elementary
		Oxon Hill Elementary
<b>Potomac High</b>		
	<b>Benjamin Stoddert Middle</b>	Barnaby Manor Elementary
		Hillcrest Heights Elementary
		Panorama Elementary
	<b>Oxon Hill Middle</b>	Flintstone Elementary
		Forest Heights Elementary
		Glassmanor Elementary
		Valley View Elementary
	<b>Thurgood Marshall Middle</b>	Barnaby Manor Elementary
		Valley View Elementary

Source: Prince George's County Public Schools



**TABLE 21.** Cluster Area 5 Elementary Schools' Enrollment and Utilization

<b>Elementary Schools</b>	<b>September 30, 2022</b>	<b>State Rated Capacity</b>	<b>Building Utilization*</b>
Allenwood Elementary	325	455	71.43%
Apple Grove Elementary	431	541	79.67%
Avalon Elementary	278	435	63.91%
Barnaby Manor Elementary	442	574	77.00%
Flintstone Elementary	384	451	85.14%
Forest Heights Elementary	258	314	82.17%
Fort Foote Elementary	309	451	68.51%
Glassmanor Elementary	288	335	85.97%
Hillcrest Heights Elementary	406	703	57.75%
Indian Queen Elementary	295	549	53.73%
J Frank Dent Elementary	226	365	61.92%
Oxon Hill Elementary	237	423	56.03%
Panorama Elementary	568	691	82.20%
Samuel Chase Elementary	281	383	73.37%
Suitland Elementary	519	702	73.93%
Valley View Elementary	350	541	64.70%
<b>Total Cluster Area 5</b>	<b>5,597</b>	<b>7,913</b>	<b>70.73%</b>

\*Building Utilization is the percentage of the Adjusted Enrollment to the State Rated Capacity  
Source: Prince George's County Public Schools

**TABLE 22.** Cluster Area 5 Middle Schools' Enrollment and Utilization

Middle Schools	September 30, 2022	State Rated Capacity	Building Utilization*
Benjamin Stoddert Middle	560	774	72.35%
Isaac J Gourdine Middle	567	824	68.81%
Oxon Hill Middle	767	783	97.96%
Thurgood Marshall Middle	704	923	76.27%
<b>Total Cluster Area 5</b>	<b>2,598</b>	<b>3,304</b>	<b>78.63%</b>

\*Building Utilization is the percentage of the Adjusted Enrollment to the State Rated Capacity  
Source: Prince George's County Public Schools

**TABLE 23.** Cluster Area 5 High Schools' Enrollment and Utilization

High Schools	September 30, 2022	State Rated Capacity	Building Utilization*
Crossland High	1,082	1,775	60.96%
Oxon Hill High	1,553	1,360	114.19%
Potomac High	1,253	1,915	65.43%
<b>Total Cluster Area 5</b>	<b>3,888</b>	<b>5,050</b>	<b>76.99%</b>

\*Building Utilization is the percentage of the Adjusted Enrollment to the State Rated Capacity  
Source: Prince George's County Public Schools

# CLUSTER 6



**TABLE 24.** Cluster Area 6 School Feeder Pattern

High School	Middle School	Elementary School
<b>Frederick Douglass High</b>		
	<b>Gwynn Park Middle</b>	Baden Elementary
		Marlton Elementary
		Mattaponi Elementary
		Rosaryville Elementary
	<b>James Madison Middle</b>	Melwood Elementary
		Rosaryville Elementary
<b>Friendly High</b>		
	<b>Accokeek Academy</b>	Fort Washington Forest Elem
		Potomac Landing Elementary
	<b>Isaac J. Gourdine Middle</b>	Apple Grove Elementary
		Rose Valley Elementary
		Tayac Elementary
<b>Gwynn Park High</b>		
	<b>Accokeek Academy</b>	Accokeek Academy
		Fort Washington Forest Elem
	<b>Gwynn Park Middle</b>	Baden Elementary
		Brandywine Elementary
		Clinton Grove Elementary
		Fort Washington Forest Elem
<b>Surrattsville High</b>		
	<b>Gwynn Park Middle</b>	Clinton Grove Elementary
	<b>Stephen Decatur Middle</b>	Clinton Grove Elementary
		James Ryder Randall Elementary
		Waldon Woods Elementary

Source: Prince George's County Public Schools

**TABLE 25.** Cluster Area 6 Elementary Schools' Enrollment and Utilization

Elementary Schools	September 30, 2022	State Rated Capacity	Building Utilization*
Accokeek Academy	1,567	1,428	109.73%
Apple Grove Elementary	431	541	79.67%
Baden Elementary	226	337	67.06%
Brandywine Elementary	526	477	110.27%
Clinton Grove Elementary	259	426	60.80%
Fort Washington Forest Elementary	364	434	83.87%
James Ryder Randall Elementary	254	441	57.60%
Marlton Elementary	309	489	63.19%
Mattaponi Elementary	376	458	82.10%
Melwood Elementary	450	633	71.09%
Potomac Landing Elementary	422	454	92.95%
Rosaryville Elementary	454	783	57.98%
Rose Valley Elementary	366	428	85.51%
Tayac Elementary	370	545	67.89%
Waldon Woods Elementary	529	568	93.13%
<b>Total Cluster Area 6</b>	<b>6,903</b>	<b>8,442</b>	<b>81.77%</b>

\*Building Utilization is the percentage of the Adjusted Enrollment to the State Rated Capacity

Source: Prince George's County Public Schools



**TABLE 26.** Cluster Area 6 Middle Schools' Enrollment and Utilization

<b>Middle Schools</b>	<b>September 30, 2022</b>	<b>State Rated Capacity</b>	<b>Building Utilization*</b>
Accokeek Academy	1,567	1,428	109.73%
Gwynn Park Middle	711	765	92.94%
Isaac J Gourdine Middle	567	824	68.81%
James Madison Middle	873	850	102.71%
Stephen Decatur Middle	781	901	86.68%
<b>Total Cluster Area 6</b>	<b>4,499</b>	<b>4,768</b>	<b>94.36%</b>

\*Building Utilization is the percentage of the Adjusted Enrollment to the State Rated Capacity  
*Source:* Prince George's County Public Schools

**TABLE 27.** Cluster Area 5 High Schools' Enrollment and Utilization

<b>High Schools</b>	<b>September 30, 2022</b>	<b>State Rated Capacity</b>	<b>Building Utilization*</b>
Frederick Douglass High	1,159	1,410	82.20%
Friendly High	881	1,351	65.21%
Gwynn Park High	1,140	1,208	94.37%
Surrattsville High	772	1,237	62.41%
<b>Total Cluster Area 6</b>	<b>3,952</b>	<b>5,206</b>	<b>75.91%</b>

\*Building Utilization is the percentage of the Adjusted Enrollment to the State Rated Capacity  
*Source:* Prince George's County Public Schools



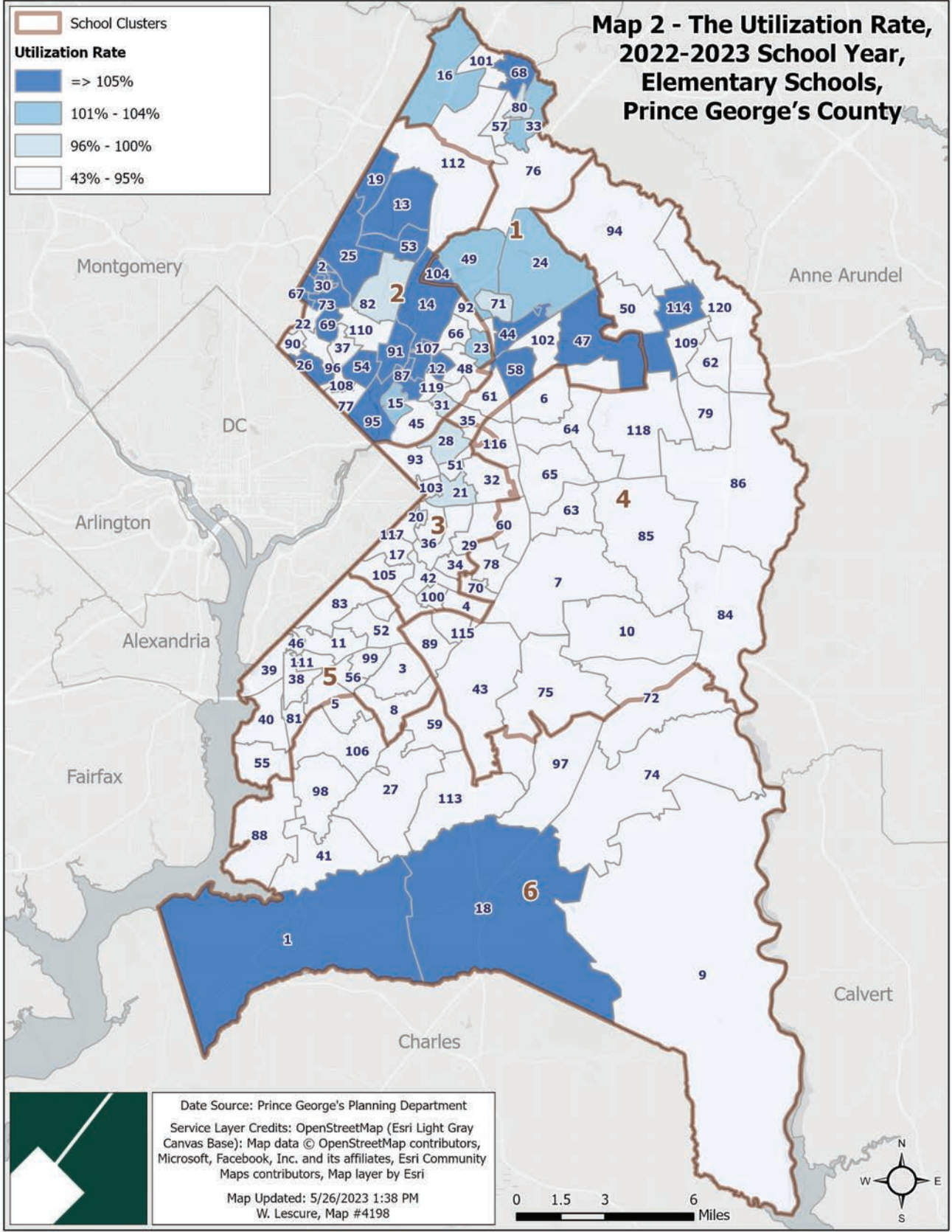
## School Utilization Rates

**Maps 2, 3, and 4** demonstrate school utilization rates by school type by individual school district. Those three maps provide meaningful indication on where overcrowding conditions exist in the County, which lays out policy implications on future land use planning and development.

Overall, schools in the northwest quadrant of the County, regardless of types, are equal to or over 105% of the state rated capacity (This percentage is called the utilization rate.). For elementary schools and middle schools, the utilization rate also appears high in southern County. The Planning Department and PGCPD collaborate on alleviating overcrowding conditions via capital improvement programs, such as new schools or additional seats, as well as some adjustments to ensure quality education.

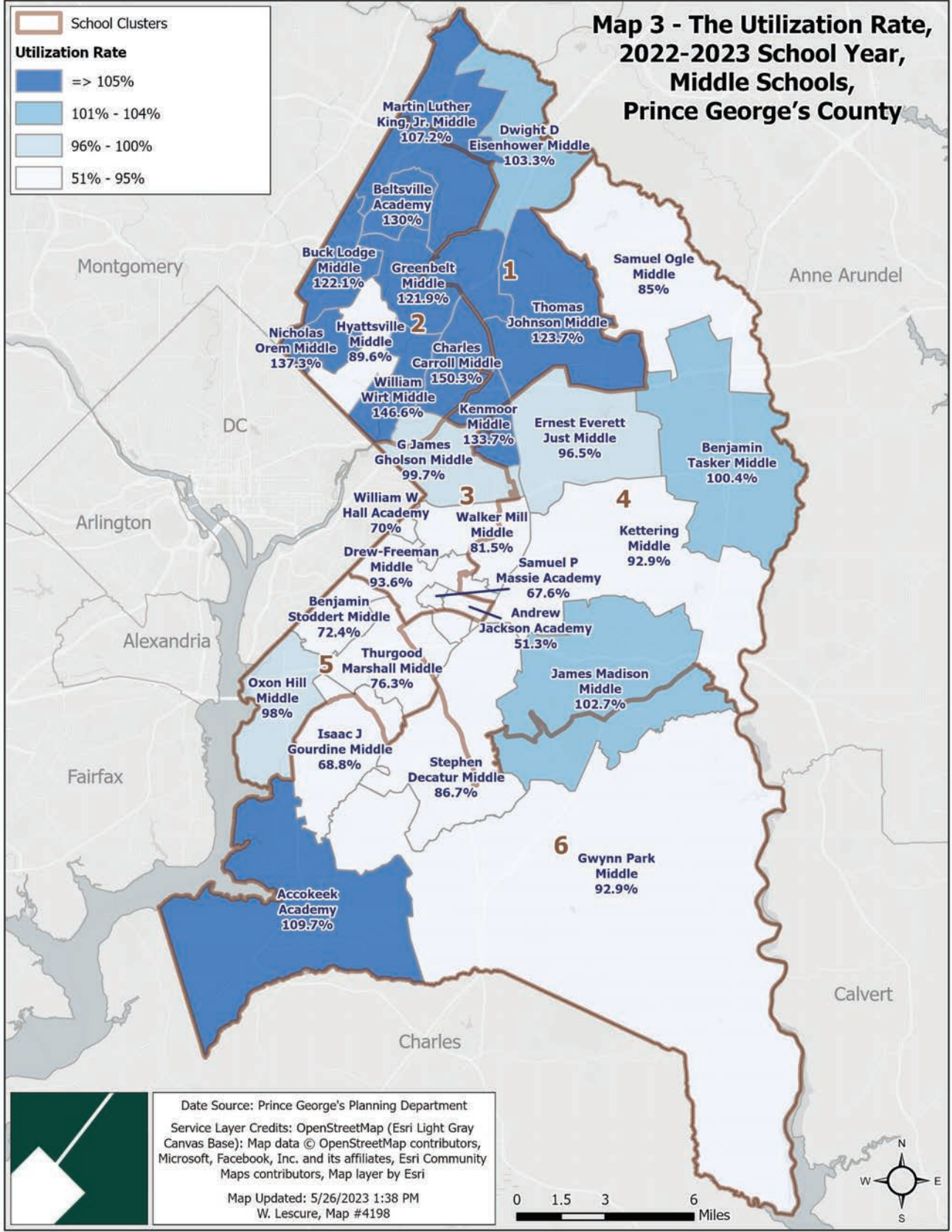
Data for the elementary school map is included in **Appendix C**. Labeling so many elementary schools and utilization rates would make the map illegible.

## Map 2 - The Utilization Rate, 2022-2023 School Year, Elementary Schools, Prince George's County

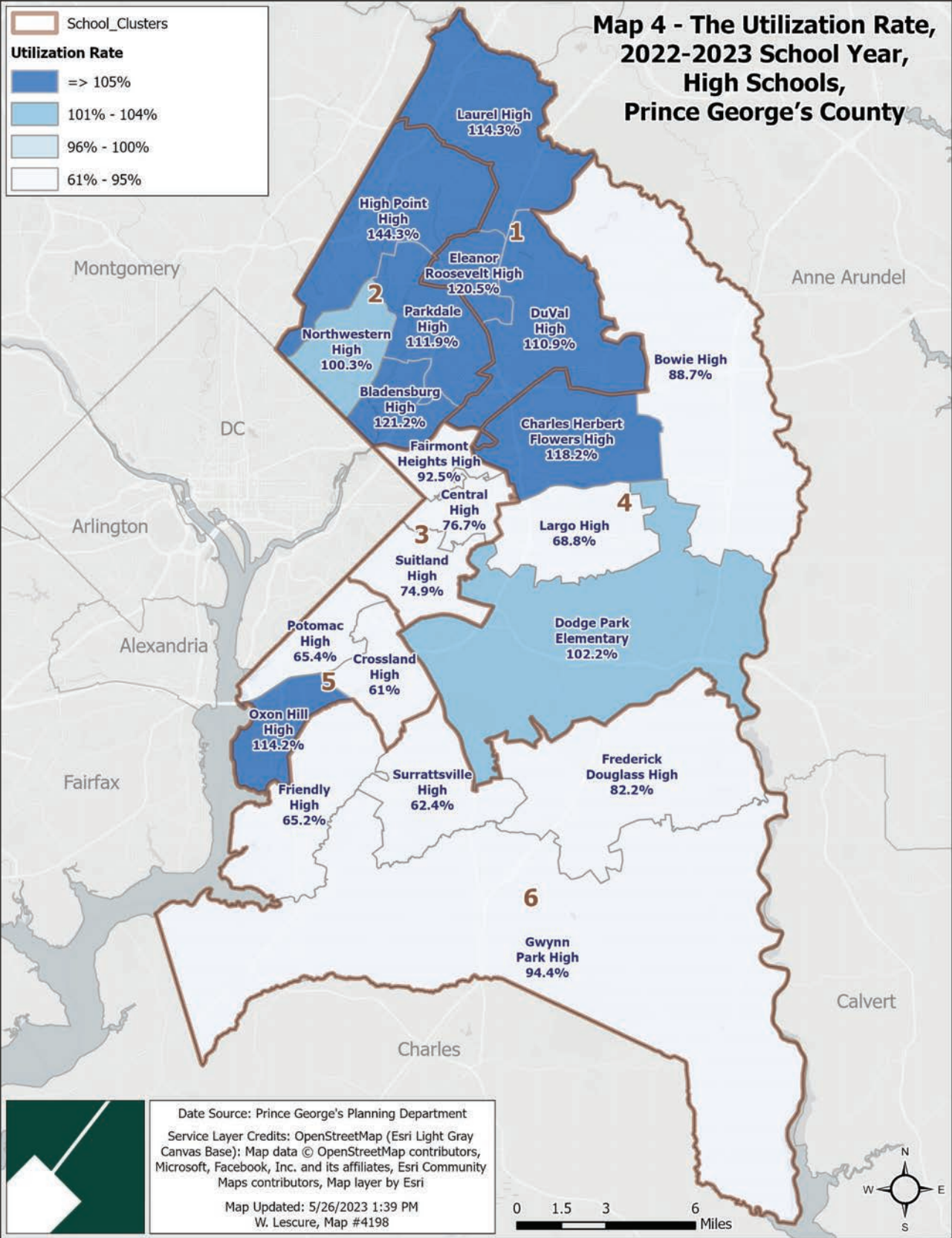




**Map 3 - The Utilization Rate, 2022-2023 School Year, Middle Schools, Prince George's County**



# Map 4 - The Utilization Rate, 2022-2023 School Year, High Schools, Prince George's County





The background features a dense, repeating pattern of light blue line-art icons on a darker blue background. The icons represent various educational fields: science (microscope, globe, test tube), mathematics (calculator, plus signs), language (speech bubbles with 'A' and '文'), and general learning (books, graduation cap, diploma, pencil, apple, hands, play button, document, magnifying glass, person icons).

# APPENDICES

# APPENDIX A

## September 30, 2022 Public School Enrollment

School	Pre-K	Kindergarten	1st Grade	2nd Grade	3rd Grade	4th Grade	5th Grade	6th Grade	7th grade	8th Grade	9th Grade	10th Grade	11th Grade	12th Grade	Total	Total (adjusted for half-day 3 yrs)	State-Rated Capacity	*Seats Available	*Building Utilization	Board of Ed District	Council District	Legislative District	Region
Academy Of Health Sciences At PGCC	-	-	-	-	-	-	-	-	-	-	132	103	88	144	683	467	-	-	-	6	6	25	Central
Acookeek Academy	-	109	125	135	-	138	168	185	276	305	-	-	-	-	325	1,567	1,428	(139)	110%	9	9	26	South
Adelphi Elementary	20	116	86	98	84	111	102	66	-	-	-	-	-	-	407	683	451	(232)	151%	3	2	47B	North
Allenwood Elementary	21	47	59	40	55	51	52	-	-	-	-	-	-	-	431	325	455	130	71%	8	8	26	South
Andrew Jackson Academy	19	43	48	39	50	40	30	43	56	39	-	-	-	-	417	407	793	386	51%	7	7	25	South
Apple Grove Elementary	30	39	61	56	69	57	59	60	-	-	-	-	-	-	406	431	541	110	80%	8	8	26	South
Ardmore Elementary	36	55	72	66	56	72	60	-	-	-	-	-	-	-	417	417	523	106	80%	4	5	24	Central
Arrowhead Elementary	37	48	45	74	54	77	71	-	-	-	-	-	-	-	406	406	434	28	94%	7	6	25	Central
Avalon Elementary	16	41	51	49	35	40	46	-	-	-	-	-	-	-	278	278	435	157	64%	8	8	26	South
Baden Elementary	40	21	36	32	24	23	24	26	-	-	-	-	-	-	226	226	337	111	67%	9	9	27B	South
Barack Obama Elementary	40	111	99	118	115	120	143	-	-	-	-	-	-	-	746	746	834	88	89%	7	6	25	Central
Barnaby Manor Elementary	32	76	70	60	64	67	73	-	-	-	-	-	-	-	442	442	574	132	77%	8	8	26	South
Beacon Heights Elementary	20	42	49	48	58	53	67	44	-	-	-	-	-	-	381	381	362	(19)	105%	4	3	22	North
Beltsville Academy	20	97	124	117	135	106	127	120	131	125	-	-	-	-	1,102	1,102	848	(254)	130%	1	1	21	North
Benjamin D. Foulois Academy	-	50	47	50	53	52	51	72	81	74	-	-	-	-	530	530	758	228	70%	7	7	25	South
Benjamin Stoddert Middle	-	-	-	-	-	-	-	196	175	189	-	-	-	-	560	560	774	214	72%	7	7	25	South
Benjamin Tasker Middle	-	-	-	-	-	-	-	324	345	375	-	-	-	-	1,044	1,044	1,040	(4)	100%	5	4	23	Central
Berwyn Heights Elementary	-	86	59	78	61	64	72	60	-	-	-	-	-	-	480	480	429	(51)	112%	2	3	22	North
Bladensburg Elementary	40	85	114	90	105	86	93	97	-	-	-	-	-	-	710	710	698	(12)	102%	4	5	47A	North
Bladensburg High	-	-	-	-	-	-	-	-	-	-	853	594	341	376	2,164	2,164	1,785	(379)	121%	4	5	47A	North
Bond Mill Elementary	-	66	90	72	82	75	96	-	-	-	-	-	-	-	481	481	479	(2)	100%	1	1	21	North
Bowie High	-	-	-	-	-	-	-	-	-	-	718	616	521	605	2,460	2,460	2,772	312	89%	5	4	23	Central
Bradbury Heights Elementary	30	60	67	43	65	48	59	72	-	-	-	-	-	-	444	444	782	338	57%	7	7	24	Central
Brandywine Elementary	-	86	89	83	93	78	97	-	-	-	-	-	-	-	526	526	477	(49)	110%	9	9	27B	South
Buck Lodge Middle	-	-	-	-	-	-	-	174	539	529	-	-	-	-	1,242	1,242	1,017	(225)	122%	3	2	47B	North

Source: Prince George's County Public Schools

School	Pre-K	Kindergarten	1st Grade	2nd Grade	3rd Grade	4th Grade	5th Grade	6th Grade	7th grade	8th Grade	9th Grade	10th Grade	11th Grade	12th Grade	Total	Total (adjusted for half-day 3 yrs)	State-Rated Capacity	*Seats Available	*Building Utilization	Board of Ed District	Council District	Legislative District	Region
C. Elizabeth Rieg	-	13	9	7	8	9	10	12	10	13	7	3	22	9	132	132	130	(2)	102%	5	4	23	Central
Calverton Elementary	19	133	148	133	133	145	125	-	-	-	-	-	-	-	836	836	589	(247)	142%	1	1	21	North
Capitol Heights Elementary	18	28	27	43	66	46	61	-	-	-	-	-	-	-	289	289	363	74	80%	6	7	24	Central
Carmody Hills Elementary	40	64	63	68	77	64	67	-	-	-	-	-	-	-	443	443	451	8	98%	6	7	24	Central
Carole Highlands Elementary	42	62	80	61	71	61	52	55	-	-	-	-	-	-	484	484	535	51	90%	3	2	47B	North
Carrollton Elementary	40	94	89	80	92	98	87	-	-	-	-	-	-	-	580	580	559	(21)	104%	2	3	22	North
Catherine T. Reed Elementary	20	89	83	66	77	75	62	-	-	-	-	-	-	-	472	472	457	(15)	103%	1	4	22	North
Central High	-	-	-	-	-	-	-	-	-	-	327	274	134	142	877	877	1,143	266	77%	6	6	25	Central
Cesar Chavez Elementary	-	76	70	59	51	51	48	-	-	-	-	-	-	-	355	355	357	2	99%	3	2	47A	North
Chapel Forge E O C	209	-	-	-	-	-	-	-	-	-	-	-	-	-	209	165	260	95	63%	5	4	23	Central
Charles Carroll Middle	-	-	-	-	-	-	-	182	499	547	-	-	-	-	1,228	1,228	817	(411)	150%	2	3	22	North
Charles Herbert Flowers High	-	-	-	-	-	-	-	-	-	-	754	636	573	606	2,569	2,569	2,174	(395)	118%	4	5	24	Central
Cherokee Lane Elementary	33	88	93	87	86	71	82	79	-	-	-	-	-	-	619	619	408	(211)	152%	3	2	47B	North
Chesapeake Math And IT Public Charter	-	98	102	102	102	104	100	167	154	171	171	151	136	126	1,684	1,684	-	-	-	1	1	21	North
Chesapeake Math And IT South Public Charter	-	97	98	101	101	105	101	166	161	166	120	84	93	93	1,486	1,486	-	-	-	9	9	25	Central
Chillum Elementary	28	69	61	37	53	60	60	-	-	-	-	-	-	-	368	368	335	(33)	110%	3	2	47A	North
Clinton Grove Elementary	38	36	35	38	34	33	45	-	-	-	-	-	-	-	259	259	426	167	61%	9	9	25	South
College Park Academy	-	-	-	-	-	-	-	118	123	118	95	92	73	73	692	692	-	-	-	2	3	22	North
Columbia Park Elementary	38	54	78	49	64	59	91	65	-	-	-	-	-	-	498	498	515	17	97%	4	5	47A	Central
Concord Elementary	22	42	28	26	34	39	49	35	-	-	-	-	-	-	275	275	451	176	61%	6	7	24	Central
Cool Spring Elementary	51	106	124	96	123	109	94	94	-	-	-	-	-	-	797	797	535	(262)	149%	3	2	47B	North
Cooper Lane Elementary	40	58	59	65	43	70	66	74	-	-	-	-	-	-	475	475	494	19	96%	4	5	47A	North
Cora L. Rice Elementary	41	73	73	86	81	98	74	-	-	-	-	-	-	-	526	526	696	170	76%	6	5	24	Central
Crossland High	-	-	-	-	-	-	-	-	-	-	446	256	182	198	1,082	1,082	1,775	693	61%	8	8	26	South
Deerfield Run Elementary	19	89	110	89	93	92	85	-	-	-	-	-	-	-	577	577	570	(7)	101%	1	1	23	North

Source: Prince George's County Public Schools

School	Pre-K	Kindergarten	1st Grade	2nd Grade	3rd Grade	4th Grade	5th Grade	6th Grade	7th grade	8th Grade	9th Grade	10th Grade	11th Grade	12th Grade	Total	Total (adjusted for half-day 3 yrs)	State-Rated Capacity	*Seats Available	*Building Utilization	Board of Ed District	Council District	Legislative District	Region
District Heights Elementary	20	48	54	57	55	60	61	-	-	-	-	-	-	-	355	355	515	160	69%	7	7	25	Central
Dodge Park Elementary	39	68	74	63	69	65	79	65	-	-	-	-	-	-	522	522	511	(11)	102%	4	5	22	Central
Dora Kennedy French Immersion	-	100	100	81	65	76	71	59	65	62	-	-	-	-	679	679	-	-	-	2	4	22	North
Doswell E Brooks Elementary	13	36	29	38	29	26	33	21	-	-	-	-	-	-	225	225	523	298	43%	6	7	24	Central
Dr. Henry A. Wise, Jr. High	-	-	-	-	-	-	-	-	-	-	709	634	433	481	2,257	2,257	2,518	261	90%	7	6	25	Central
Drew-Freeman Middle	-	-	-	-	-	-	-	207	320	306	-	-	-	-	833	833	890	57	94%	7	7	24	South
DuVal High	-	-	-	-	-	-	-	-	-	-	850	699	485	469	2,503	2,503	2,258	(245)	111%	1	4	22	North
Dwight D. Eisenhower Middle	-	-	-	-	-	-	-	302	381	401	-	-	-	-	1,084	1,084	1,049	(35)	103%	1	1	21	North
Edward M Felegu Elementary	59	115	125	98	106	105	118	-	-	-	-	-	-	-	726	726	879	153	83%	3	2	22	North
Eleanor Roosevelt High	-	-	-	-	-	-	-	-	-	-	784	649	508	585	2,526	2,526	2,096	(430)	121%	2	4	22	North
Ernest Everett Just Middle	-	-	-	-	-	-	-	225	273	297	-	-	-	-	795	795	824	29	96%	6	6	24	Central
Excel Academy Public Charter	-	34	38	43	41	38	40	43	33	39	-	-	-	-	349	349	470	121	74%	4	5	24	Central
Fairmont Heights High	-	-	-	-	-	-	-	-	-	-	371	237	241	190	1,039	1,039	1,123	84	93%	4	5	47A	Central
Flintstone Elementary	19	61	55	57	62	65	65	-	-	-	-	-	-	-	384	384	451	67	85%	8	8	26	South
Forest Heights Elementary	20	32	37	32	28	32	43	34	-	-	-	-	-	-	258	258	314	56	82%	8	8	26	South
Fort Foote Elementary	17	50	43	35	39	41	44	40	-	-	-	-	-	-	309	309	451	142	69%	8	8	26	South
Fort Washington Forest Elem	38	43	50	58	39	37	52	47	-	-	-	-	-	-	364	364	434	70	84%	9	9	26	South
Frances R Fuchs E C C	340	-	-	-	-	-	-	-	-	-	-	-	-	-	340	267	260	(7)	103%	1	1	21	North
Francis Scott Key Elementary	33	58	65	65	51	81	67	-	-	-	-	-	-	-	420	420	677	257	62%	6	7	24	Central
Francis T Evans Elementary	32	52	46	61	52	56	51	-	-	-	-	-	-	-	350	350	454	104	77%	9	8	25	South
Frederick Douglass High	-	-	-	-	-	-	-	-	-	-	314	337	244	264	1,159	1,159	1,410	251	82%	9	9	23	South
Friendly High	-	-	-	-	-	-	-	-	-	-	267	272	203	139	881	881	1,351	470	65%	8	9	26	South
G. James Gholson Middle	-	-	-	-	-	-	-	137	383	347	-	-	-	-	867	867	870	3	100%	6	5	24	Central
Gaywood Elementary	36	66	76	66	85	72	96	-	-	-	-	-	-	-	497	497	386	(111)	129%	4	3	22	North
Glady's Noon Spellman Elementary	19	66	69	60	75	66	64	64	-	-	-	-	-	-	483	483	564	81	86%	4	5	47A	North

Source: Prince George's County Public Schools



School	Pre-K	Kindergarten	1st Grade	2nd Grade	3rd Grade	4th Grade	5th Grade	6th Grade	7th grade	8th Grade	9th Grade	10th Grade	11th Grade	12th Grade	Total	Total (adjusted for half-day 3 yrs)	State-Rated Capacity	*Seats Available	*Building Utilization	Board of Ed District	Council District	Legislative District	Region
Glassmanor Elementary	-	49	44	44	42	49	55	-	-	-	-	-	-	-	288	288	335	47	86%	8	8	26	South
Glenarden Woods Elementary	-	-	100	100	122	105	121	-	-	-	-	-	-	-	448	448	460	12	97%	4	5	24	Central
Glenn Dale Elementary	-	84	95	77	75	100	73	-	-	-	-	-	-	-	504	504	404	(100)	125%	4	4	24	Central
Glenridge Elementary	35	99	129	83	105	120	101	97	-	-	-	-	-	-	769	769	828	59	93%	4	3	22	North
Greenbelt Elementary	17	102	107	72	92	95	88	-	-	-	-	-	-	-	573	573	568	(5)	101%	2	4	22	North
Greenbelt Middle	-	-	-	-	-	-	-	331	503	508	-	-	-	-	1,342	1,342	1,101	(241)	122%	2	4	22	North
Gwynn Park High	-	-	-	-	-	-	-	-	-	-	357	287	258	238	1,140	1,140	1,208	68	94%	9	9	27B	South
Gwynn Park Middle	-	-	-	-	-	-	-	214	262	235	-	-	-	-	711	711	765	54	93%	9	9	27B	South
H. Winship Wheatley E C C	321	-	-	-	-	-	-	-	-	-	-	-	-	-	321	257	420	163	61%	6	6	25	Central
Heather Hills Elementary	-	-	71	91	91	94	90	-	-	-	-	-	-	-	346	346	368	22	94%	5	4	23	Central
High Bridge Elementary	-	61	58	48	56	70	49	-	-	-	-	-	-	-	342	342	371	29	92%	5	4	24	Central
High Point High	-	-	-	-	-	-	-	-	-	-	1,159	846	518	480	3,003	3,003	2,081	(922)	144%	1	1	21	North
Highland Park Elementary	18	36	31	48	32	37	28	41	-	-	-	-	-	-	271	271	574	303	47%	6	7	24	Central
Hillcrest Heights Elementary	36	69	62	48	65	71	55	-	-	-	-	-	-	-	406	406	703	297	58%	8	7	25	South
Hollywood Elementary	20	91	100	66	72	79	56	-	-	-	-	-	-	-	484	484	339	(145)	143%	2	1	21	North
Hjattsville Elementary	32	74	70	62	71	41	73	-	-	-	-	-	-	-	423	423	406	(17)	104%	3	2	22	North
Hjattsville Middle	-	-	-	-	-	-	-	170	281	254	-	-	-	-	705	705	787	82	90%	3	2	22	North
Imagine Andrews Public Charter	-	42	36	48	44	45	44	58	46	39	-	-	-	-	402	402	-	-	-	9	8	25	South
Imagine Foundations At Leeland PCS	-	49	48	52	50	55	57	61	63	55	-	-	-	-	490	490	-	-	-	5	6	25	Central
Imagine Foundations at Morningside PCS	-	39	38	41	36	35	44	41	45	46	-	-	-	-	365	365	365	-	100%	7	7	25	South
Imagine Lincoln PCS	-	32	31	40	43	45	46	52	44	44	-	-	-	-	377	377	-	-	-	7	7	25	South
Incarcerated Youth Center (IACS)	-	-	-	-	-	-	-	-	-	-	1	4	1	4	10	10	-	-	-	7	6	25	Central
Indian Queen Elementary	20	39	36	28	44	39	45	44	-	-	-	-	-	-	295	295	549	254	54%	8	8	26	South
International High School @ Langley Park	-	-	-	-	-	-	-	-	-	-	179	12	72	67	330	330	447	117	74%	4	5	47A	North
International High School @ Largo	-	-	-	-	-	-	-	-	-	-	195	18	91	85	389	389	363	(26)	107%	6	6	25	Central

Source: Prince George's County Public Schools

School	Pre-K	Kindergarten	1st Grade	2nd Grade	3rd Grade	4th Grade	5th Grade	6th Grade	7th grade	8th Grade	9th Grade	10th Grade	11th Grade	12th Grade	Total	Total (adjusted for half-day 3 yrs)	State-Rated Capacity	*Seats Available	*Building Utilization	Board of Ed District	Council District	Legislative District	Region
Isaac J. Gourdine Middle	-	-	-	-	-	-	-	135	203	229	-	-	-	-	567	567	824	257	69%	8	8	26	South
J. Frank Dent Elementary	10	28	37	32	36	27	30	26	-	-	-	-	-	-	226	226	365	139	62%	8	8	25	South
James E. Duckworth	-	3	10	10	12	10	10	4	11	4	5	12	11	3	105	105	120	15	88%	1	1	21	North
James H. Harrison Elementary	14	46	46	34	46	37	51	28	-	-	-	-	-	-	302	302	343	41	88%	1	1	23	North
James Madison Middle	-	-	-	-	-	-	-	285	280	308	-	-	-	-	873	873	850	(23)	103%	9	9	23	South
James Mc. Henry Elementary	40	112	110	111	107	106	107	-	-	-	-	-	-	-	693	693	537	(156)	129%	4	5	24	Central
James Ryder Randall E C C	158	-	-	-	-	-	-	-	-	-	-	-	-	-	158	126	-	-	-	8	9	25	South
James Ryder Randall Elementary	-	41	39	43	50	40	41	-	-	-	-	-	-	-	254	254	441	187	58%	8	9	25	South
John H Bayne Elementary	36	49	34	45	50	55	53	-	-	-	-	-	-	-	322	322	542	220	59%	6	6	25	Central
John Hanson Montessori	116	52	50	40	57	40	38	38	32	28	-	-	-	-	491	466	902	436	52%	8	8	26	South
Judge Sylvia W Woods, Sr. Elem	40	70	82	92	83	85	82	98	-	-	-	-	-	-	632	632	719	87	88%	4	5	22	Central
Judith P. Houjer Montessori	84	35	45	27	33	28	26	28	22	24	-	-	-	-	352	334	439	105	76%	6	5	24	Central
Kenilworth Elementary	-	58	77	56	70	60	71	-	-	-	-	-	-	-	392	392	448	56	88%	5	4	23	Central
Kenmoor E C C	252	-	-	-	-	-	-	-	-	-	-	-	-	-	252	192	250	58	77%	4	5	24	Central
Kenmoor Middle	-	-	-	-	-	-	-	230	345	354	-	-	-	-	929	929	695	(234)	134%	4	5	24	Central
Kettering Elementary	38	63	62	61	65	62	56	-	-	-	-	-	-	-	407	407	589	182	69%	6	6	25	Central
Kettering Middle	-	-	-	-	-	-	-	285	307	323	-	-	-	-	915	915	985	70	93%	6	6	25	Central
Kingsford Elementary	47	53	63	68	56	80	81	-	-	-	-	-	-	-	448	447	750	303	60%	5	6	24	Central
Lake Arbor Elementary	21	86	104	80	79	66	109	-	-	-	-	-	-	-	545	545	796	251	68%	6	6	24	Central
Lamont Elementary	40	72	68	66	50	80	77	-	-	-	-	-	-	-	453	453	503	50	90%	2	3	22	North
Langley Pk- McCormick Elementary	39	121	118	96	102	94	91	95	-	-	-	-	-	-	756	756	486	(270)	156%	3	2	47B	North
Largo High	-	-	-	-	-	-	-	-	-	-	344	242	181	172	939	939	1,365	426	69%	6	6	25	Central
Laurel Elementary	20	91	112	82	101	80	80	-	-	-	-	-	-	-	566	566	493	(73)	115%	1	1	21	North
Laurel High	-	-	-	-	-	-	-	-	-	-	782	508	418	426	2,134	2,134	1,867	(267)	114%	1	1	21	North
Legends Public Charter School	-	100	99	100	97	100	99	99	100	-	-	-	-	-	794	794	-	-	-	4	5	24	Central

Source: Prince George's County Public Schools

School	Pre-K	Kindergarten	1st Grade	2nd Grade	3rd Grade	4th Grade	5th Grade	6th Grade	7th grade	8th Grade	9th Grade	10th Grade	11th Grade	12th Grade	Total	Total (adjusted for half-day 3 yrs)	State-Rated Capacity	*Seats Available	*Building Utilization	Board of Ed District	Council District	Legislative District	Region
Lewisdale Elementary	39	88	127	85	87	95	96	-	-	-	-	-	-	-	617	617	471	(146)	131%	3	2	47B	North
Longfields Elementary	11	30	34	42	58	47	45	28	-	-	-	-	-	-	295	295	474	179	62%	7	6	25	Central
Magnolia Elementary	19	70	46	57	61	53	60	68	-	-	-	-	-	-	434	434	449	15	97%	2	3	22	North
Marlton Elementary	40	36	42	45	44	54	48	-	-	-	-	-	-	-	309	309	489	180	63%	9	9	23	South
Martin Luther King, Jr. Middle	-	-	-	-	-	-	-	295	305	311	-	-	-	-	911	911	850	(61)	107%	1	1	21	North
Mary Harris "Mother" Jones Elem	39	157	194	136	151	156	151	-	-	-	-	-	-	-	984	984	769	(215)	128%	3	2	21	North
Mattaponi Elementary	-	49	63	55	75	63	71	-	-	-	-	-	-	-	376	376	458	82	82%	9	9	23	South
Mays Angelou French Immersion	-	40	50	60	42	38	38	40	38	46	-	-	-	-	392	392	670	278	59%	8	7	26	South
Melwood Elementary	-	71	84	82	60	78	75	-	-	-	-	-	-	-	450	450	633	183	71%	9	9	23	South
Montpelier Elementary	40	89	87	98	81	79	88	-	-	-	-	-	-	-	562	562	609	47	92%	1	1	23	North
ML Rainier Elementary	36	49	49	33	34	45	34	48	-	-	-	-	-	-	328	328	406	78	81%	3	2	47A	North
Nicholas Orem Middle	-	-	-	-	-	-	-	237	444	457	-	-	-	-	1,138	1,138	829	(309)	137%	3	2	22	North
North Forestville Elementary	20	36	50	45	40	47	46	-	-	-	-	-	-	-	284	284	438	154	65%	7	6	25	Central
Northview Elementary	40	96	91	79	80	100	81	-	-	-	-	-	-	-	567	567	797	230	71%	5	4	23	Central
Northwestern High	-	-	-	-	-	-	-	-	-	-	816	650	454	426	2,346	2,346	2,340	(6)	100%	3	2	47B	North
Oaklands Elementary	34	68	64	62	54	57	56	-	-	-	-	-	-	-	395	395	408	13	97%	1	1	21	North
Overlook Elementary	18	52	50	59	54	57	38	-	-	-	-	-	-	-	328	328	545	217	60%	7	7	24	South
Oxon Hill Elementary	15	38	36	37	27	43	41	-	-	-	-	-	-	-	237	237	423	186	56%	8	8	26	South
Oxon Hill High	-	-	-	-	-	-	-	-	-	-	441	392	385	335	1,553	1,553	1,360	(193)	114%	8	8	26	South
Oxon Hill Middle	-	-	-	-	-	-	-	167	278	322	-	-	-	-	767	767	783	16	98%	8	8	26	South
Paint Branch Elementary	34	43	48	46	61	39	42	44	-	-	-	-	-	-	357	357	357	-	100%	2	3	21	North
Panorama Elementary	39	105	85	88	79	88	84	-	-	-	-	-	-	-	568	568	691	123	82%	8	7	26	South
Parkdale High	-	-	-	-	-	-	-	-	-	-	916	727	476	442	2,561	2,561	2,288	(273)	112%	2	3	22	North
Patuxent Elementary	21	46	41	45	46	45	45	-	-	-	-	-	-	-	289	289	451	162	64%	5	9	23	Central
Perrywood Elementary	-	70	101	73	105	82	86	-	-	-	-	-	-	-	517	517	800	283	65%	6	6	25	Central

Source: Prince George's County Public Schools

School	Pre-K	Kindergarten	1st Grade	2nd Grade	3rd Grade	4th Grade	5th Grade	6th Grade	7th grade	8th Grade	9th Grade	10th Grade	11th Grade	12th Grade	Total	Total (adjusted for half-day 3 yrs)	State-Rated Capacity	*Seats Available	*Building Utilization	Board of Ed District	Council District	Legislative District	Region
Phyllis E. Williams Elementary	-	79	71	63	55	50	36	-	-	-	-	-	-	-	354	354	538	184	66%	6	6	25	Central
Pointer Ridge Elementary	-	60	51	51	51	55	50	-	-	-	-	-	-	-	318	318	596	278	53%	5	4	23	Central
Port Towns Elementary	77	140	131	118	115	120	121	133	-	-	-	-	-	-	955	955	809	(146)	118%	4	5	47A	North
Potomac High	-	-	-	-	-	-	-	-	-	-	423	335	246	249	1,253	1,253	1,915	662	65%	8	7	26	South
Potomac Landing Elementary	20	57	65	64	49	48	57	62	-	-	-	-	-	-	422	422	454	32	93%	9	8	26	South
Princeton Elementary	22	50	55	46	50	56	48	-	-	-	-	-	-	-	327	327	448	121	73%	7	8	26	South
Ridgecrest Elementary	60	89	97	83	66	93	75	73	-	-	-	-	-	-	636	636	693	57	92%	3	2	47A	North
Riverdale Elementary	40	95	95	109	104	99	88	-	-	-	-	-	-	-	630	630	563	(67)	112%	2	3	22	North
Robert Frost Elementary	-	53	43	49	29	48	46	-	-	-	-	-	-	-	268	268	309	41	87%	2	3	22	North
Robert Goddard Montessori	117	44	53	40	38	41	43	34	41	30	-	-	-	-	481	453	499	46	91%	1	4	22	North
Robert R. Gray Elementary	32	62	55	57	49	51	65	47	3	6	-	-	-	-	427	427	808	381	53%	4	5	47A	Central
Rockledge Elementary	38	34	63	52	50	56	48	-	-	-	-	-	-	-	341	341	454	113	75%	5	4	23	Central
Rogers Heights Elementary	37	94	103	80	97	92	97	86	-	-	-	-	-	-	686	686	610	(76)	112%	4	5	47A	North
Rosa L Parks Elementary	38	103	93	77	88	72	94	98	-	-	-	-	-	-	663	663	810	147	82%	3	2	47B	North
Roseville Elementary	41	75	72	48	76	71	71	-	-	-	-	-	-	-	454	454	783	329	58%	9	9	23	South
Rose Valley Elementary	22	59	61	46	59	66	53	-	-	-	-	-	-	-	366	366	428	62	86%	8	9	26	South
Samuel Chase Elementary	29	44	45	38	45	37	43	-	-	-	-	-	-	-	281	281	383	102	73%	8	8	26	South
Samuel Ogle Middle	-	-	-	-	-	-	-	291	260	244	-	-	-	-	795	795	935	140	85%	5	4	23	Central
Samuel P Massie Academy	18	59	49	40	56	64	56	71	50	57	-	-	-	-	520	520	769	249	68%	7	7	25	South
Scotchtown Hills Elementary	42	96	91	79	74	75	80	75	-	-	-	-	-	-	612	612	790	178	77%	1	1	21	North
Seabrook Elementary	31	41	50	47	41	62	44	-	-	-	-	-	-	-	316	316	409	93	77%	4	3	24	Central
Seat Pleasant Elementary	17	51	51	34	50	49	37	42	-	-	-	-	-	-	331	331	354	23	94%	6	7	24	Central
Springhill Lake Elementary	40	109	138	116	119	126	142	-	-	-	-	-	-	-	790	790	561	(229)	141%	2	4	22	North
Stephen Decatur Middle	-	-	-	-	-	-	-	219	262	300	-	-	-	-	781	781	901	120	87%	9	9	25	South
Suitland Elementary	38	70	75	50	80	73	70	63	-	-	-	-	-	-	519	519	702	183	74%	7	7	24	South

Source: Prince George's County Public Schools

School	Pre-K	Kindergarten	1st Grade	2nd Grade	3rd Grade	4th Grade	5th Grade	6th Grade	7th grade	8th Grade	9th Grade	10th Grade	11th Grade	12th Grade	Total	Total (adjusted for half-day 3 yrs)	State-Rated Capacity	*Seats Available	*Building Utilization	Board of Ed District	Council District	Legislative District	Region
Suitland High	-	-	-	-	-	-	-	-	-	-	717	406	340	371	1,834	1,834	2,447	613	75%	7	7	24	South
Surrattsville High	-	-	-	-	-	-	-	-	-	-	226	226	159	161	772	772	1,237	465	62%	9	9	25	South
Tayac Elementary	19	64	69	67	47	53	51	-	-	-	-	-	-	-	370	370	545	175	68%	8	8	26	South
Templeton Elementary	40	125	136	113	147	131	107	-	-	-	-	-	-	-	799	799	565	(234)	141%	4	5	47A	North
Thomas G. Pullen	-	75	72	75	69	74	70	98	103	99	-	-	-	-	735	735	881	146	83%	6	5	24	Central
Thomas Johnson Middle	-	-	-	-	-	-	-	417	415	442	-	-	-	-	1,274	1,274	1,050	(244)	124%	4	5	24	Central
Thomas S. Stone Elementary	39	67	86	58	66	52	64	-	-	-	-	-	-	-	432	432	638	206	68%	3	2	47A	North
Thurgood Marshall Middle	-	-	-	-	-	-	-	190	259	255	-	-	-	-	704	704	923	219	76%	8	8	26	South
Tulip Grove Elementary	-	56	73	42	83	59	57	-	-	-	-	-	-	-	370	370	457	87	81%	5	4	23	Central
University Park Elementary	28	57	71	70	60	63	56	32	-	-	-	-	-	-	437	437	565	128	77%	3	3	22	North
Valley View Elementary	19	43	36	53	90	41	68	-	-	-	-	-	-	-	350	350	541	191	65%	8	8	26	South
Vansville Elementary	40	99	97	85	100	103	111	-	-	-	-	-	-	-	635	635	836	201	76%	1	1	21	North
Waldon Woods Elementary	19	67	87	82	97	93	84	-	-	-	-	-	-	-	529	529	568	39	93%	9	9	27A	South
Walker Mill Middle	-	-	-	-	-	-	-	195	263	235	-	-	-	-	693	693	850	157	82%	6	6	25	Central
Whitehall Elementary	-	76	92	91	101	96	110	-	-	-	-	-	-	-	566	566	411	(155)	138%	5	4	23	Central
William Beanes Elementary	39	63	70	48	49	58	55	-	-	-	-	-	-	-	382	382	560	178	68%	7	7	25	Central
William Paca Elementary	54	79	93	81	84	76	92	-	-	-	-	-	-	-	559	559	601	42	93%	6	5	24	Central
William W. Hall Academy	29	38	47	61	57	39	44	54	71	56	-	-	-	-	496	496	709	213	70%	6	7	24	Central
William Wirt Middle	-	-	-	-	-	-	-	183	500	563	-	-	-	-	1,246	1,246	850	(396)	147%	2	3	22	North
Woodmore Elementary	36	60	70	63	73	78	71	-	-	-	-	-	-	-	451	451	570	119	79%	5	6	23	Central
Woodridge Elementary	20	44	34	42	38	37	44	41	-	-	-	-	-	-	300	300	337	37	89%	4	3	22	North
Yorktown Elementary	-	52	62	66	61	49	53	-	-	-	-	-	-	-	343	343	457	114	75%	5	4	23	Central
<b>School System Total</b>	<b>4,824</b>	<b>9,284</b>	<b>9,872</b>	<b>9,137</b>	<b>9,605</b>	<b>9,569</b>	<b>9,686</b>	<b>9,721</b>	<b>9,841</b>	<b>9,977</b>	<b>13,479</b>	<b>10,302</b>	<b>7,887</b>	<b>7,959</b>	<b>129,932</b>	<b>130,798</b>							

Source: Prince George's County Public Schools



# APPENDIX B

## Adopted Subdivision Regulations

## **24-4510. Schools Adequacy**

### **(a) Applicability**

(1) Unless exempted in accordance with Section 24-4510(a)(3) below, a certificate for schools adequacy shall be reviewed and approved, approved with conditions, or denied in accordance with Section 24-4503, Certificate of Adequacy.

(2) To gain approval of the certificate for schools adequacy, the applicant shall demonstrate the proposed development complies with the LOS standards of Section 24-4510(b) below[,] or provides adequate mitigation (if appropriate), and complies with all other requirements of this Section.

(3) The following are exempt from the requirements of this Section:

(A) A preliminary plan for subdivision (minor or major) which is a redevelopment project that replaces existing dwelling units;

(B) A preliminary plan for subdivision (minor or major) for elderly housing operated in accordance with the State and Federal Fair Housing laws;

(C) A preliminary plan for subdivision (minor or major) that consists of no more than three lots on less than five gross acres of land, whose lots, except for one to be retained by grantor, are to be conveyed to a son or daughter or lineal descendant of the grantor; and

(D) A preliminary plan for subdivision (minor or major) located in the Transit-Oriented/Activity Center base or PD zones.

### **(b) Adopted LOS Standard for Schools**

(1) The adopted LOS standard for schools is based on school clusters, which are groupings of elementary, middle, and high schools that are impacted by the preliminary plan for subdivision (minor or major).

(2) The adopted LOS standard is that the number of students generated by the proposed subdivision at each stage of development will not exceed 105 percent of the state rated capacity, as adjusted by the School Regulations, of the affected elementary, middle, and high school clusters.

(3) The number of elementary, middle, and high school students generated by the proposed subdivision shall be determined in accordance with the pupil yield factors for each dwelling unit type as determined by the Planning Director from historical information provided by the Superintendent of the Prince George's County Public Schools.

(4) The Planning Director shall determine:

(A) The school cluster or clusters impacted by the proposed preliminary plan for subdivision (minor or major).

(B) The actual enrollment, which is the number of elementary, middle, and high school students, as reported by the Superintendent of the Prince George's County Public Schools as of September 30 of the prior year, and as calculated by the Planning Director that is effective in January of each year for use in that calendar year.

(C) The completion enrollment, which is the total number of elementary, middle, and high school students to be generated by the estimated number of residential completions, for each school cluster.

(i) Residential completions are estimated from the total of all substantially completed dwelling units added to the County's assessable tax base in the two previous calendar years.

(ii) In determining completion enrollment, the estimated number of residential completions in a given school cluster will not exceed the number of dwelling units shown on:

(aa) An approved preliminary plan of subdivision (minor or major) with no waiting period, or with a waiting period less than 24 months as of September 30 of each calendar year; and

(bb) All recorded plats not subject to an adequate public facilities test for schools at time of building permit issuance.

(D) The subdivision enrollment, which is the anticipated number of elementary, middle, and high school students to be generated by all dwelling units shown on the proposed preliminary plan of subdivision (minor or major), multiplied by the pupil yield factor.

(E) The cumulative enrollment, which is the total of all subdivision enrollments resulting from approved preliminary plans of subdivision (minor or major) in each school cluster for the calendar year in which an adequate public facilities test is being applied.

(F) The Planning Director shall determine the subdivision's cluster enrollment by adding: the actual number of students in the cluster as of September 30; the number of students anticipated from residential completions in the cluster; the number anticipated from the subdivision; and the number of students anticipated from subdivisions already approved in the cluster within the calendar year. The Planning Director shall then determine the percent capacity by dividing the cluster enrollment by the state rated capacity (adjusted by the School Regulations) of schools in the cluster.

**(c) Mitigation**

When conditioned upon payment of the schools facility surcharge, or when otherwise exempt from the schools facility surcharge pursuant to Section 10-192.01, School Facilities Surcharge, of the County Code, the subdivision may be approved regardless of actual or projected school capacity.

[Whenever an adequate school facility fee is charged in conjunction with a building permit, it shall be reduced by the full amount of the school facilities surcharge imposed on that same permit.]

\* \* \* \* \*

# APPENDIX C

## Elementary School Map Index



**Appendix C.** Elementary School Map Index for Map 2

School Number on Map	Elementary School Name	Utilization Rate
1	Accokeek Academy	110%
2	Adelphi Elementary	151%
3	Allenwood Elementary	71%
4	Andrew Jackson Academy	51%
5	Apple Grove Elementary	80%
6	Ardmore Elementary	80%
7	Arrowhead Elementary	94%
8	Avalon Elementary	64%
9	Baden Elementary	67%
10	Barack Obama Elementary	89%
11	Barnaby Manor Elementary	77%
12	Beacon Heights Elementary	105%
13	Beltsville Academy	130%
14	Berwyn Heights Elementary	112%
15	Bladensburg Elementary	102%
16	Bond Mill Elementary	100%
17	Bradbury Heights Elementary	57%
18	Brandywine Elementary	110%
19	Calverton Elementary	142%
20	Capitol Heights Elementary	80%
21	Carmody Hills Elementary	98%
22	Carole Highlands Elementary	90%
23	Carrollton Elementary	104%
24	Catherine T. Reed Elementary	103%
25	Cherokee Lane Elementary	152%
26	Chillum Elementary	110%
27	Clinton Grove Elementary	61%
28	Columbia Park Elementary	97%
29	Concord Elementary	61%
30	Cool Spring Elementary	149%
31	Cooper Lane Elementary	96%
32	Cora L. Rice Elementary	76%
33	Deerfield Run Elementary	101%
34	District Heights Elementary	69%
35	Doswell E. Brooks Elementary	43%

Source: Prince George's County Public Schools

**Appendix C.** Elementary School Map Index for Map 2

School Number on Map	Elementary School Name	Utilization Rate
36	Dr. Henry A. Wise, Jr. High	90%
37	Edward M Felegy Elementary	83%
38	Flintstone Elementary	85%
39	Forest Heights Elementary	82%
40	Fort Foote Elementary	69%
41	Fort Washington Forest Elem	84%
42	Francis Scott Key Elementary	62%
43	Francis T. Evans Elementary	77%
44	Gaywood Elementary	129%
45	Gladys Noon Spellman Elementary	86%
46	Glassmanor Elementary	86%
47	Glenn Dale Elementary	125%
48	Glenridge Elementary	93%
49	Greenbelt Elementary	101%
50	High Bridge Elementary	92%
51	Highland Park Elementary	47%
52	Hillcrest Heights Elementary	58%
53	Hollywood Elementary	143%
54	Hyattsville Elementary	104%
55	Indian Queen Elementary	54%
56	J. Frank Dent Elementary	62%
57	James H Harrison Elementary	88%
58	James Mc Henry Elementary	129%
59	James Ryder Randall Elementary	58%
60	John H. Bayne Elementary	59%
61	Judge Sylvania W Woods, Sr. Elem	88%
62	Kenilworth Elementary	88%
63	Kettering Elementary	69%
64	Kingsford Elementary	60%
65	Lake Arbor Elementary	68%
66	Lamont Elementary	90%
67	Langley Pk-McCormick Elementary	156%
68	Laurel Elementary	115%
69	Lewisdale Elementary	131%
70	Longfields Elementary	62%

Source: Prince George's County Public Schools

**Appendix C.** Elementary School Map Index for Map 2

School Number on Map	Elementary School Name	Utilization Rate
71	Magnolia Elementary	97%
72	Marlton Elementary	63%
73	Mary Harris "Mother" Jones Elem	128%
74	Mattaponi Elementary	82%
75	Melwood Elementary	71%
76	Montpelier Elementary	92%
77	Mt. Rainier Elementary	81%
78	North Forestville Elementary	65%
79	Northview Elementary	71%
80	Oaklands Elementary	97%
81	Oxon Hill Elementary	56%
82	Paint Branch Elementary	100%
83	Panorama Elementary	82%
84	Patuxent Elementary	64%
85	Perrywood Elementary	65%
86	Pointer Ridge Elementary	53%
87	Port Towns Elementary	118%
88	Potomac Landing Elementary	93%
89	Princeton Elementary	73%
90	Ridgecrest Elementary	92%
91	Riverdale Elementary	112%
92	Robert Frost Elementary	87%
93	Robert R. Gray Elementary	53%
94	Rockledge Elementary	75%
95	Rogers Heights Elementary	112%
96	Rosa L. Parks Elementary	82%
97	Rosaryville Elementary	58%
98	Rose Valley Elementary	86%
99	Samuel Chase Elementary	73%
100	Samuel P. Massie Academy	68%
101	Scotchtown Hills Elementary	77%
102	Seabrook Elementary	77%
103	Seat Pleasant Elementary	94%
104	Springhill Lake Elementary	141%
105	Suitland Elementary	74%

Source: Prince George's County Public Schools

**Appendix C.** Elementary School Map Index for Map 2

School Number on Map	Elementary School Name	Utilization Rate
106	Tayac Elementary	68%
107	Templeton Elementary	141%
108	Thomas S. Stone Elementary	68%
109	Tulip Grove Elementary	81%
110	University Park Elementary	77%
111	Valley View Elementary	65%
112	Vansville Elementary	76%
113	Waldon Woods Elementary	93%
114	Whitehall Elementary	138%
115	William Beanes Elementary	68%
116	William Paca Elementary	93%
117	William W. Hall Academy	70%
118	Woodmore Elementary	79%
119	Woodridge Elementary	89%
120	Yorktown Elementary	75%

Source: Prince George's County Public Schools

# Acknowledgments

## Prince George's County Planning Department

### PGCPD SENIOR MANAGEMENT TEAM

Suzanne King	Acting Planning Director
Derick Berlage, AICP	Acting Deputy Director of Operations
James Cannistra, C.P., GISP	Chief, Information Management Division

### PGCPD PRODUCTION TEAM

Kui Zhao, AICP	Planning Supervisor
William Lescure, GISP	Senior GIS Specialist
Matthew Greene	Research Planner II
Audrey Graham	Senior GIS Specialist

### PGCPD TECHNICAL AND ADMINISTRATIVE ASSISTANCE

Daniel Hartmann	Manager, Publications, Graphics and Web Development
Corianne Setzer	Publications Specialist
M'balu Abdullah	Senior IT Support Specialist/Web Manager

## Prince George's County Public Schools

Rhianna McCarter	Manager of Pupil Accounting & School Boundaries
John C. Wooden	Specialist - Pupil Accounting and School Boundaries Prince George's County Public Schools





The Maryland-National Capital Park and Planning Commission  
Prince George's County Planning Department  
14741 Governor Oden Bowie Drive  
Upper Marlboro, MD 20772

[www.pgplanning.org](http://www.pgplanning.org)