

Pupil Yield Factors & Public School Clusters

2021 Update



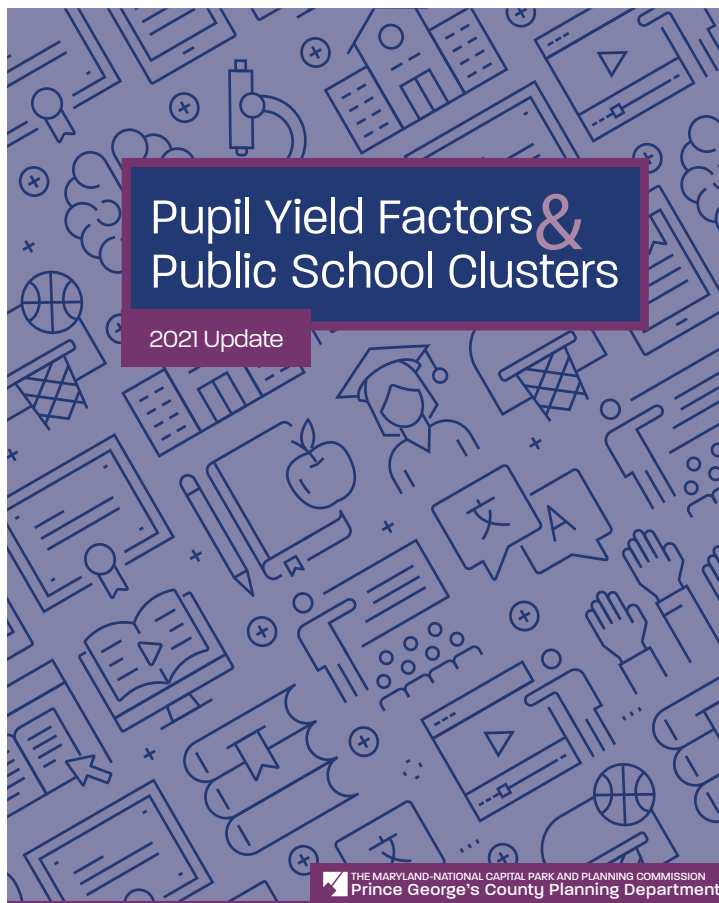
THE MARYLAND-NATIONAL CAPITAL PARK AND PLANNING COMMISSION
Prince George's County Planning Department



Abstract

Date	April 2022
Title	2021 Update of the Pupil Yield Factors and Public School Clusters
Subject	2021 Update of the Pupil Yield Factors and Public School Clusters for the Prince George's County Public Schools
Author	The Maryland-National Capital Park and Planning Commission
Planning Agency	The Maryland-National Capital Park and Planning Commission
Source of copies	The Maryland-National Capital Park and Planning Commission 14741 Governor Oden Bowie Drive Upper Marlboro, MD 20772
Series number	975222405
Number of pages	52

This study updates the pupil yield factors which are used in the regulatory review of preliminary plans of subdivision. These factors are used to measure the impact that a new subdivision will have on the public schools that might serve the proposed subdivision. To determine the schools that might be impacted by a proposed subdivision, school clusters are created and updated by the Planning Department. The school clusters are also part of this update.



April 2022

The Maryland-National Capital Park and Planning Commission

Prince George's County Planning Department
14741 Governor Oden Bowie Drive
Upper Marlboro, MD 20772

www.pgplanning.org

The Maryland-National Capital Park and Planning Commission

Casey Anderson, Chairman
Elizabeth M. Hewlett, Vice Chairman

Officers

Asuntha Chiang-Smith, Executive Director
Gavin Cohen, Secretary-Treasurer
Adrian R. Gardner, General Counsel

The Maryland-National Capital Park and Planning Commission (M-NCPPC) is a bicounty agency, created by the General Assembly of Maryland in 1927. The Commission's geographic authority extends to the great majority of Montgomery and Prince George's Counties: the Maryland-Washington Regional District (M-NCPPC planning jurisdiction) comprises 1,001 square miles, while the Metropolitan District (parks) comprises 919 square miles, in the two counties.

The Commission has three major functions:

- The preparation, adoption, and, from time to time, amendment or extension of the General Plan for the physical development of the Maryland-Washington Regional District.
- The acquisition, development, operation, and maintenance of a public park system.
- In Prince George's County only, the operation of the entire county public recreation program.

The Commission operates in each county through a Planning Board appointed by and responsible to the County government. All local plans, recommendations on zoning amendments, administration of subdivision regulations, and general administration of parks are responsibilities of the Planning Boards.

The Prince George's County Planning Department:

- Our mission is to help preserve, protect and manage the County's resources by providing the highest quality planning services and growth management guidance and by facilitating effective intergovernmental and citizen involvement through education and technical assistance.
- Our vision is to be a model planning department of responsive and respected staff who provide superior planning and technical services and work cooperatively with decision makers, citizens, and other agencies to continuously improve development quality and the environment and act as a catalyst for positive change

PRINCE GEORGE'S COUNTY PLANNING BOARD



Elizabeth M. Hewlett, Esq., chairman



Dorothy F. Bailey, vice chair



Manuel R. Geraldo



William Doerner



A. Shuanise Washington

MONTGOMERY COUNTY PLANNING BOARD



Casey Anderson, chairman



Gerald R. Cichy



Tina Patterson



Partap Verma



Carol Rubin

Prince George's County



Angela Alsobrooks,
County Executive

County Council

The County Council has three main responsibilities in the planning process: (1) setting policy, (2) plan approval, and (3) plan implementation. Applicable policies are incorporated into area plans, functional plans, and the general plan. The Council, after holding a hearing on the plan adopted by the Planning Board, may approve the plan as adopted, approve the plan with amendments based on the public record, or disapprove the plan and return it to the Planning Board for revision. Implementation is primarily through adoption of the annual Capital Improvement Program, the annual Budget, the water and sewer plan, and adoption of zoning map amendments.

COUNCIL MEMBERS

Calvin S. Hawkins, II, Chair At-large

Thomas E. Dernoga, 1st District

Deni Taveras, 2nd District, Council Vice Chair

Dannielle M. Glaros, 3rd District

Todd M. Turner, 4th District,

Jolene Ivey, 5th District

Derrick L. Davis, 6th District

Rodney C. Streeter, 7th District

Edwards P. Burroughs, 8th District

Sydney J. Harrison, 9th District

Mel Franklin, At-large

Clerk of the Council: Donna J. Brown

Table of Contents

Introduction.....	7
Pupil Yield.....	8
Methodology and Results.....	8
Public School Clusters.....	10
Legislative Background for Public School Facilities Test and School Clusters.....	10
Methodology for the Update of Public School Cluster Areas.....	11
Updated Public School Clusters.....	12
Cluster Area 1.....	13
Cluster Area 2.....	17
Cluster Area 3.....	22
Cluster Area 4.....	26
Cluster Area 5.....	30
Cluster Area 6.....	33
Appendices.....	37
Appendix A. Adopted Subdivision Regulations.....	38
Appendix B. SY2021-2022 Official Enrollment by School and Grade.....	40

Introduction



Periodically, the Prince George's County Planning Department updates the pupil yield factors that are used in the regulatory review of preliminary plans of subdivision. These factors measure the impact that a new subdivision will have on the public schools that might serve the proposed subdivision. To determine the schools that might be impacted by a proposed subdivision, school clusters are created by the Planning Department. The Planning Department staff reviewed and updated the school clusters in this study.

This report is divided into two parts. The first part of the report will focus on the methodology and results of the updated pupil yield numbers. It should be noted that this update will not include a survey of pupil yield or student generation rates from surrounding counties in Maryland (Anne Arundel, Charles, Howard, and Montgomery Counties) and Virginia (Arlington, Fairfax, and Loudoun Counties) that were included in previous reports. Due to the COVID-19 pandemic and its variants, the school enrollment numbers in the County and surrounding jurisdictions has dramatically dropped. As an example, the Prince George's County Public School student enrollment

Table 1. Official Prince George's County Public School Total Enrollment (Adjusted for Half-Day Pre-K)

Year	Total Enrollment
September 30, 2019	135,110
September 30, 2020	131,162
September 30, 2021	128,271

dropped by 6,839 students over the past two school years, as shown in Table 1.

The second part of the report will update the clusters used in the schools' section of the public facilities review of preliminary plans of subdivision. These clusters are based on the Prince George's County Public School feeder system. The feeder system is intended to provide students and parents with the flow of schools a student will attend as they move from one level to the next. This will allow groups of students to stay together as they feed from elementary school, to middle school, and finally to high school. No significant changes were made to the clusters in this update.



PART 1

Pupil Yield



The term “pupil yield factor” is defined in the County’s Subdivision Regulations (Section 24- 2300 Definitions) as:

“The estimated number of elementary, middle, and high school students per dwelling unit, as determined by the Planning Director, from information provided by the Superintendent of the Prince George’s County Public Schools.”

The pupil yield calculations in Prince George’s County are used in the subdivision process to calculate the possible number of students or pupils yielded or generated from a subdivision. Specifically, the Planning Department staff reviews the proposed preliminary plan of subdivision and identifies the number and type of residential units requested. Staff then multiplies those numbers by the pupil yield factor to determine the anticipated number of elementary, middle, and high school students to be generated by all dwelling units shown on the proposed preliminary plan of subdivision. In Prince George’s County, the pupil yield factors are not used by the Prince George’s County Public School (PGCPS) for their enrollment projections. The PGCPS’s enrollment projections are contained in the annual updates to the Educational Facilities Master Plan, which is submitted to the Maryland Department of Planning.

Methodology and Results

The student enrollment data/addresses ([Appendix B](#) dated September 30, 2021) was geocoded to the county address point data by the PGCPS staff. The student enrollment data/addresses file contained information on students in grades 1-12. Any residents outside the County were removed from the file.

The student geocode file was joined to the Planning Department’s housing information (property info file) and the data were summarized by housing type. For this analysis, the housing types considered were Single-Family Detached, Single-Family Attached, and Multifamily. Of the 115,275 records, 113,658 were matched to properties with the three housing types. Other land use/housing types were excluded.

The total number of students for each housing type was extracted by their respective grades (Elementary = Grades 1-5, Middle = Grades 6-8, High = Grades 9-12).

The total number of housing units was extracted by selecting the individual housing type and then executing a summary on the address field. This accounts for housing units that have more than one student across or between education levels.

For purposes of this study, the types of housing units are defined as:

- **Single-Family Detached** is a one-dwelling-unit structure that is not attached to another structure and has space on all sides of the structure.
- **Single-Family Attached** is a one-dwelling-unit structure that shares one or more walls with another one-dwelling-unit structure. It can include either duplex or triplex.
- **Multifamily** is defined as four or more residential living units contained within a single structure.

In the previous study, the single-family attached dwelling units were divided into two categories named "Townhouses" and "All other Single-Family Attached Structures that are not considered

Table 2. Prince George's County 2021 Pupil Yield Factors

Type of unit	Schools		
	Elementary	Middle	High
Single-Family Detached	0.150	0.095	0.125
Single-Family Attached	0.104	0.072	0.091
Multifamily	0.119	0.070	0.081

Townhouses." In this study, the two categories were merged into the "Single-Family Attached" category. This was done since the real property data from the State Department of Assessments & Taxation (SDAT) similarly merged those two categories into one in 2021.

The pupil yield calculation results are found in Table 2. The single-family detached and multifamily factors for all three school levels are lower than the 2019 factors.

CALCULATING PUPIL YIELD/STUDENT GENERATION RATES

Below is a hypothetical calculation of the pupil yield using the County's rates to illustrate the number of students generated from a new proposed 100-dwelling-unit subdivision.

Formula:

Dwelling Units x Pupil Yield Factor = Pupil Yield or students generated by the subdivision.

Table 3. Hypothetical Pupil Yield in Prince George's County

Housing Types	# Dwelling Units	SCHOOL LEVELS						Total
		Elementary		Middle		High		
		Factors	Yield	Factors	Yield	Factors	Yield	
SFD	100	0.150	15.0	0.095	9.5	0.125	12.5	37
SFA	100	0.104	10.4	0.072	7.2	0.091	9.1	27
MF	100	0.119	11.9	0.070	14.0	0.081	8.1	34

PART 2

Public School Clusters



Legislative Background for Public School Facilities Test and School Clusters

Under the general requirements of the Subdivision Regulations, the Prince George's County Planning Director was given the responsibility to test school capacity at the time of a preliminary subdivision plan for residential development.

On October 23, 2018, the Prince George's County Council adopted CR-015-2018 (DR-3) and amendments were adopted in CR-088-2021. The new Subdivision Regulations aim to streamline procedures, reduce obstacles to achieving the economic development goals of the County, enhance utility and user-friendliness, encourage appropriate input into the subdivision review process, incorporate a certificate of adequacy procedure for testing and retesting the adequacy of public facilities, and incentivize development at targeted growth locations. The effective date of this legislation is April 1, 2022, and will be used as part of the pre-application review process.

Section 24-4510. Schools Adequacy ([Appendix A](#)) of the Adopted Subdivision Regulations retains the requirement for the adequacy test to utilize the school clusters to test the impact of new residential development on the school capacity. It states as follows:

“(b) Adopted LOS Standard for Schools

(1) The adopted LOS standard for schools is based on school clusters, which are groupings of elementary, middle, and high schools that are impacted by the preliminary plan for subdivision (minor or major).

(2) The adopted LOS standard is that the number of students generated by the proposed subdivision at each stage of development will not exceed 105 percent of the state rated capacity, as adjusted by the School Regulations, of the affected elementary, middle, and high school clusters.

(3) The number of elementary, middle, and high school students generated by the proposed subdivision shall be determined in accordance with the pupil yield factors for each dwelling unit type as determined by the Planning Director from historical information provided by the Superintendent of the Prince George's County Public Schools.”

The school clusters with utilization rates that are greater than 105 percent currently will not halt new residential development.



Methodology for the Update of Public School Cluster Areas

To update the public school clusters, the Planning Department staff used the PGCPs SY2021-2022 feeder patterns. The feeder patterns formed a matrix developed by the Prince George's County Public Schools staff that identifies the unique path a group of students will most likely take from each elementary school to middle school and ultimately to high school.

This report continues the clusters used in the previous edition with the six groupings of high schools and their associated feeder middle and elementary schools. Each cluster consists of three or more high schools and their feeder middle and elementary schools.

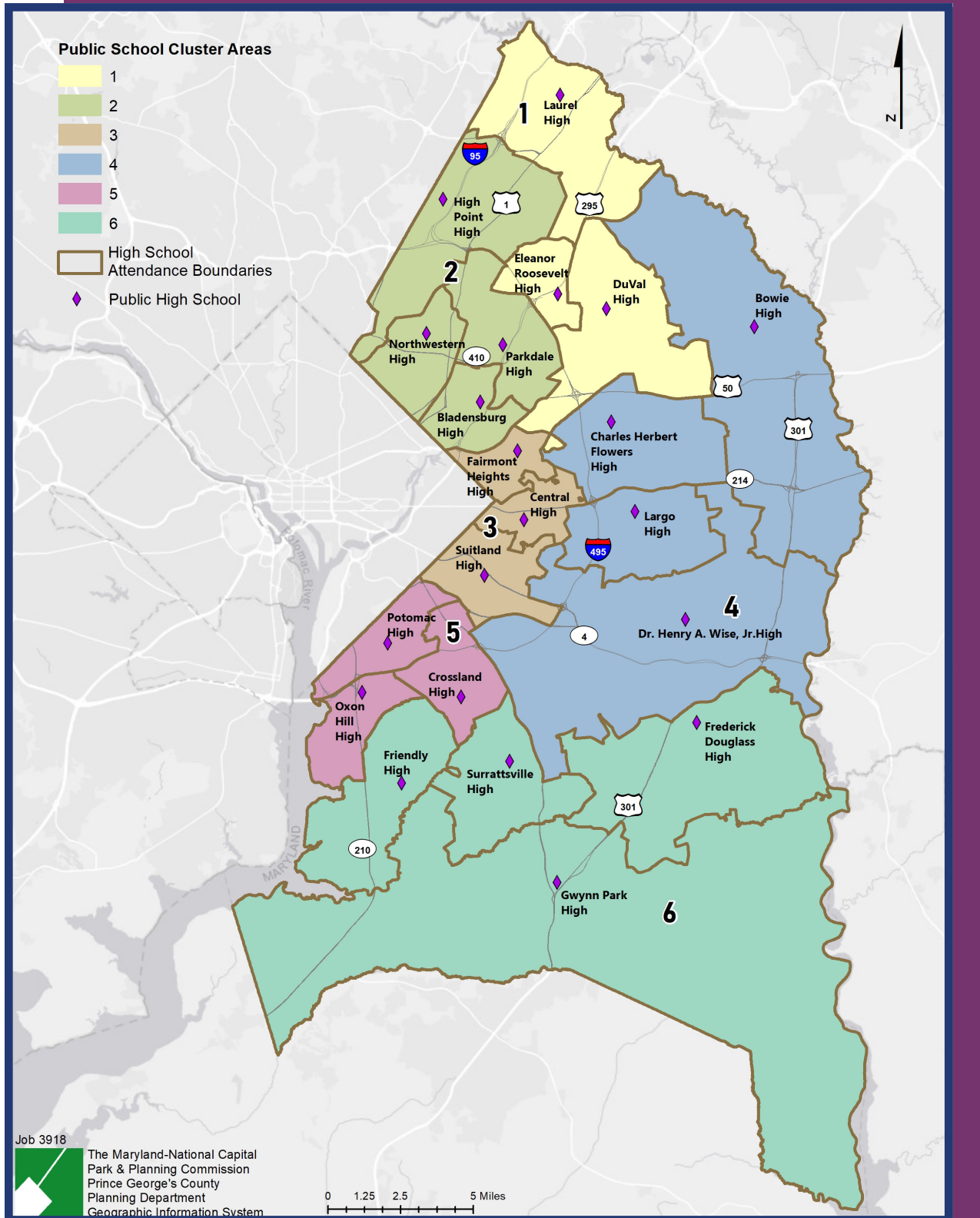
In the following descriptions of each cluster, four

different tables are provided. The first table provides the list of the high, middle, and elementary schools feeder pattern. The next three tables provide the elementary, middle and high schools enrollment as of September 30, 2021, the state-rated capacity, and the utilization percentage of each school. The elementary and middle tables will also include the high school(s) that they feed into.

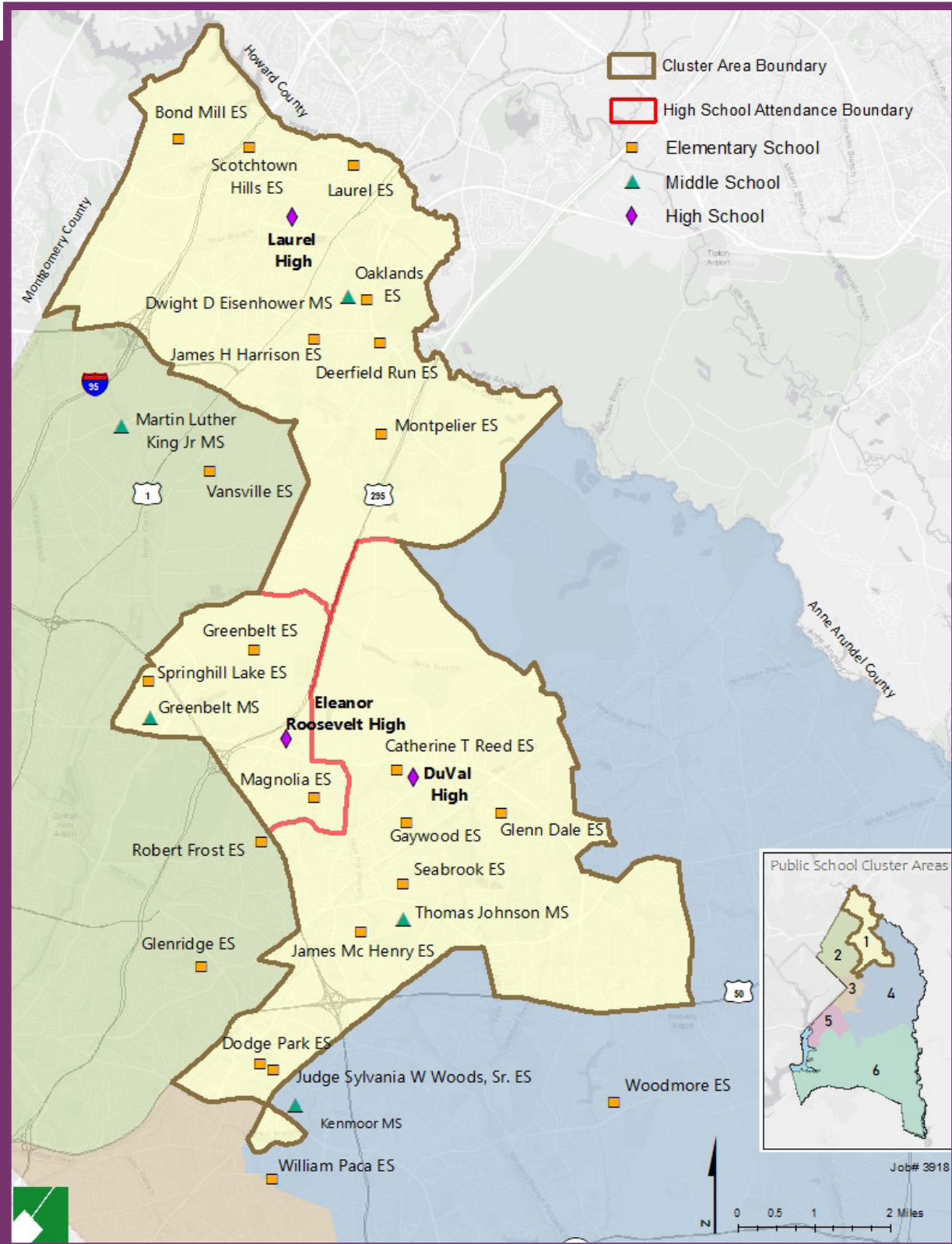
Not all public schools are included in these tables. As an example, regional schools without neighborhood attendance areas were not included in the calculation of cluster or cluster area enrollments. Public schools without a neighborhood attendance area are not included in PGCPs' feeder system because these schools generally draw their enrollment from a wide geographic area. These schools constitute a relatively fixed portion of enrollment and capacity, and have their enrollment managed.

Updated Public Schools Clusters

Map 1. Prince George's County Public School Cluster Areas



Map 2. Cluster Area 1



**CLUSTER
AREA**

1

Table 4. Cluster Area 1 Schools Feeder Pattern

High School	Middle School	Elementary School
DuVal High School	Kenmoor Middle	Dodge Park Elementary Judge Sylvania W Woods Sr Elementary William Paca Elementary
	Thomas Johnson Middle	Catherine T Reed Elementary Gaywood Elementary Glenn Dale Elementary Glenridge Elementary James McHenry Elementary Robert Frost Elementary Seabrook Elementary Woodmore Elementary
Eleanor Roosevelt High	Greenbelt Middle	Greenbelt Elementary Magnolia Elementary Springhill Lake Elementary
Laurel High	Dwight D Eisenhower Middle	Deerfield Run Elementary James H Harrison Elementary Laurel Elementary Montpelier Elementary Oaklands Elementary Scotchtown Hills Elementary
	Martin Luther King Jr Middle	Bond Mill Elementary Vansville Elementary

Source: PGOPS SY2021-2022 Feeder Patterns

Table 5. Cluster Area 1 Elementary Schools Enrollment and Utilization

Elementary Schools	Adjusted Enrollment 9/30/21	State Rated Capacity	Building Utilization*	High School
Dodge Park Elementary	509	511	100%	DuVal High
Judge Sylvania W Woods Sr Elementary	680	719	95%	DuVal High
William Paca Elementary	522	601	87%	DuVal High
Catherine T Reed Elementary	468	457	102%	DuVal High
Gaywood Elementary	467	386	121%	DuVal High
Glenn Dale Elementary	549	404	136%	DuVal High
Glenridge Elementary	695	828	84%	DuVal High
James McHenry Elementary	718	537	134%	DuVal High
Robert Frost Elementary	266	309	86%	DuVal High
Seabrook Elementary	343	409	84%	DuVal High
Woodmore Elementary	459	570	81%	DuVal High
Greenbelt Elementary	552	568	97%	Eleanor Roosevelt High
Magnolia Elementary	459	449	102%	Eleanor Roosevelt High
Springhill Lake Elementary	766	561	137%	Eleanor Roosevelt High
Deerfield Run Elementary	603	570	106%	Laurel High
James H Harrison Elementary	307	343	90%	Laurel High
Laurel Elementary	540	493	110%	Laurel High
Montpelier Elementary	569	609	93%	Laurel High
Oaklands Elementary	357	408	88%	Laurel High
Scotchtown Hills Elementary	624	790	79%	Laurel High
Bond Mill Elementary	477	479	100%	Laurel High
Vansville Elementary	691	836	83%	Laurel High
Total Cluster Area 1	11,621	11,837	98%	

*Building Utilization is the percentage of the Adjusted Enrollment to the State Rated Capacity

Source: PGPCS September 30, 2021, Official Enrollment by School and Grade and SY2021-2022 Feeder Patterns

**CLUSTER
AREA
1**

Table 6. Cluster Area 1 Middle Schools Enrollment and Utilization

Middle Schools	Adjusted Enrollment 9/30/21	State Rated Capacity	Building Utilization*	High School
Kenmoor Middle	951	695	137%	DuVal High
Thomas Johnson Middle	1,344	1,030	130%	DuVal High
Greenbelt Middle	1,387	1,101	126%	Eleanor Roosevelt High
Dwight D Eisenhower Middle	1,086	1,049	104%	Laurel High
Martin Luther King Jr Middle	938	850	110%	Laurel High
Total Cluster Area 1	5,706	4,725	121%	

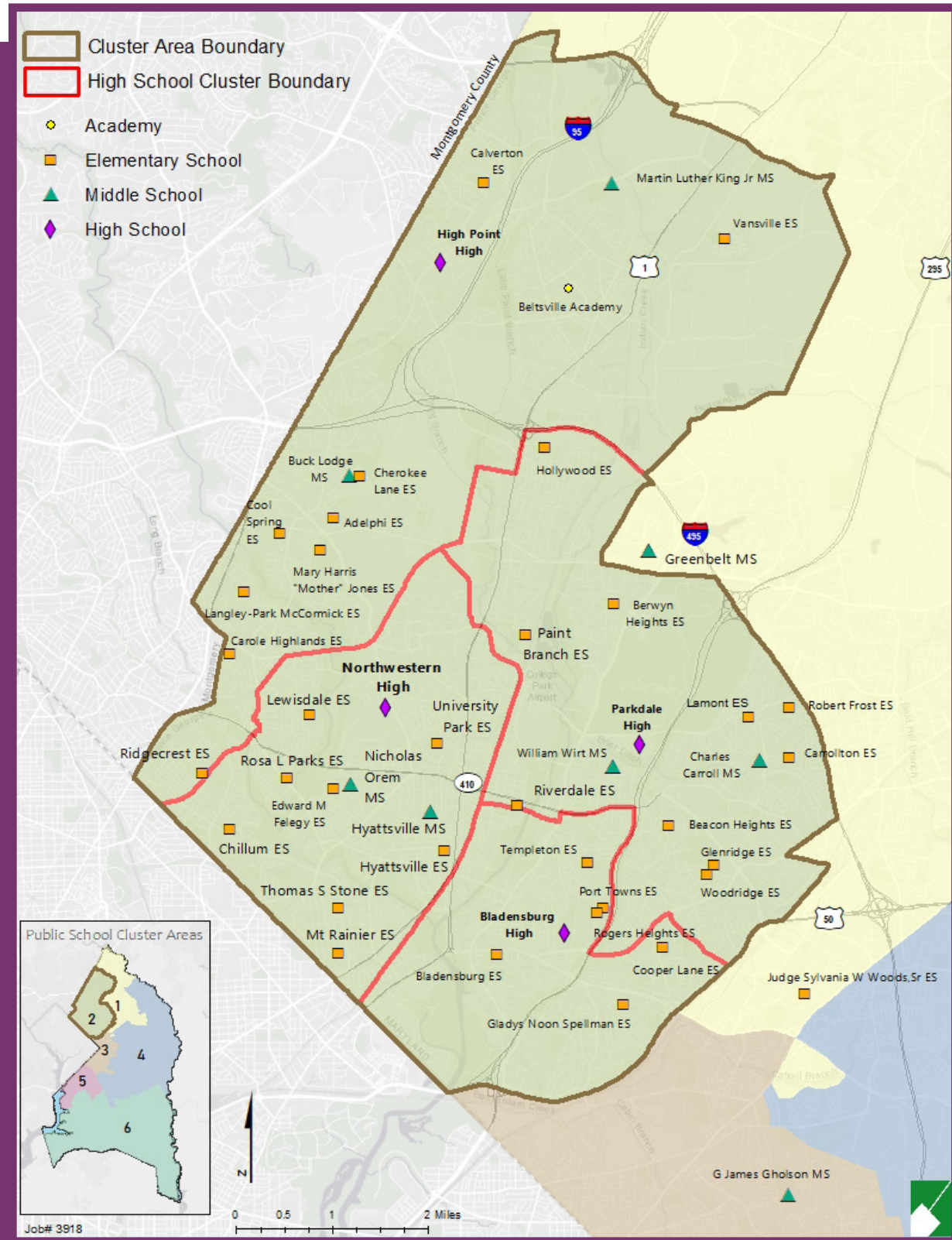
*Building Utilization is the percentage of the Adjusted Enrollment to the State Rated Capacity
Source: PGCPSS September 30, 2021, Official Enrollment by School and Grade and SY2021-2022 Feeder Patterns

Table 7. Cluster Area 1 High Schools Enrollment and Utilization

High Schools	Adjusted Enrollment 9/30/21	State Rated Capacity	Building Utilization*
DuVal High School	2,254	2,258	100%
Eleanor Roosevelt High	2,420	2,096	115%
Laurel High	2,016	1,867	108%
Total Cluster Area 1	6,690	6,221	108%

*Building Utilization is the percentage of the Adjusted Enrollment to the State Rated Capacity
Source: PGCPSS September 30, 2021, Official Enrollment by School and Grade

Map 3. Cluster Area 2



**CLUSTER
AREA
2**

Table 8. Cluster Area 2 Schools Feeder Pattern

High School	Middle School	Elementary School	
Bladensburg High	Charles Carroll Middle	Cooper Lane Elementary Gladys Noon Spellman Elementary	
	G James Gholson Middle	Gladys Noon Spellman Elementary	
	Hgattsville Middle	Riverdale Elementary	
	William Wirt Middle	Bladensburg Elementary	Gladys Noon Spellman Elementary Port Towns Elementary Riverdale Elementary Rogers Heights Elementary Templeton Elementary
High Point High	Buck Lodge Middle	Adelphi Elementary Carole Highlands Elementary Cherokee Lane Elementary Cool Spring Elementary Langley Park-McCormick Elementary Mary Harris "Mother" Jones Elementary	
		Greenbelt Middle	Hollywood Elementary
		Martin Luther King Jr Middle	Calverton Elementary Vansville Elementary
		Nicholas Orem Middle	Carole Highlands Elementary Ridgecrest Elementary Rosa Parks Elementary
	Beltsville Academy	Beltsville Academy	

Table 8 continued

High School	Middle School	Elementary School
Northwestern High	Greenbelt Middle	Paint Branch
	Hyattsville Middle	Chillum Elementary Hyattsville Elementary Mt Rainier Elementary Riverdale Elementary Thomas S Stone Elementary University Park Elementary
	Nicholas Orem Middle	Chillum Elementary Edward M Felegy Elementary Lewisdale Elementary Ridgecrest Elementary Rosa L Parks Elementary University Park Elementary
	Charles Carroll Middle	Beacon Heights Elementary Carrollton Elementary Glenridge Elementary Judge Sylvania W Woods Sr Elementary Lamont Elementary Robert Frost Elementary Woodridge Elementary
Parkdale High	Greenbelt Middle	Berwyn Heights Elementary Hollywood Elementary Paint Branch Elementary
	William Wirt Middle	Berwyn Heights Elementary Riverdale Elementary Templeton Elementary

Source: PGOPS SY2021-2022 Feeder Patterns

**CLUSTER
AREA
2**

Table 9. Cluster Area 2 Elementary Schools Enrollment and Utilization

Elementary Schools	Adjusted Enrollment 9/30/21	State Rated Capacity	Building Utilization*	High School
Cooper Lane Elementary	453	494	92%	Bladensburg High
Gladys Noon Spellman Elementary	512	564	91%	Bladensburg High
Riverdale Elementary	635	563	113%	Bladensburg High, Northwestern High, and Parkdale High
Bladensburg Elementary	699	698	100%	Bladensburg High
Port Towns Elementary	930	809	115%	Bladensburg High
Rogers Heights Elementary	672	610	110%	Bladensburg High
Templeton Elementary	829	565	147%	Bladensburg High and Parkdale High
Adelphi Elementary	655	408	160%	High Point High
Carole Highlands Elementary	440	535	82%	High Point High
Cherokee Lane Elementary	541	541	100%	High Point High
Cool Spring Elementary	805	535	150%	High Point High
Langley Park-McCormick Elementary	771	486	159%	High Point High
Mary Harris "Mother" Jones Elementary	938	769	122%	High Point High
Beltsville Academy	751	572	131%	High Point High
Greenbelt Elementary	552	568	97%	High Point High
Hollywood Elementary	462	339	136%	High Point High
Calverton Elementary	794	589	135%	High Point High
Vansville Elementary	691	836	83%	High Point High
Ridgecrest Elementary	603	693	87%	High Point High and Northwestern High
Rosa Parks Elementary	620	810	77%	High Point High and Northwestern High
Chillum Elementary	335	335	100%	Northwestern High
Hyattsville Elementary	440	406	108%	Northwestern High
Mt Rainier Elementary	328	406	81%	Northwestern High
Paint Branch Elementary	364	357	102%	Northwestern High and Parkdale High
Thomas S Stone Elementary	451	638	71%	Northwestern High
University Park Elementary	429	565	76%	Northwestern High
Edward M Felegy Elementary	687	879	78%	Northwestern High
Lewisdale Elementary	580	471	123%	Northwestern High
Beacon Heights Elementary	406	362	112%	Parkdale High
Carrollton Elementary	557	559	100%	Parkdale High
Glenridge Elementary	695	828	84%	Parkdale High
Judge Sylvania W Woods Sr Elem	680	719	95%	Parkdale High
Lamont Elementary	480	503	95%	Parkdale High
Robert Frost Elementary	266	309	86%	Parkdale High
Woodridge Elementary	301	337	89%	Parkdale High
Berwyn Heights Elementary	436	429	102%	Parkdale High
Total Cluster Area 2	20,788	20,087	103%	

*Building Utilization is the percentage of the Adjusted Enrollment to the State Rated Capacity

Source: PGCPs September 30, 2021, Official Enrollment by School and Grade and SY2021-2022 Feeder Patterns

Table 10. Cluster Area 2 Middle Schools Enrollment and Utilization

Middle Schools	Adjusted Enrollment 9/30/21	State Rated Capacity	Building Utilization*	High School
Charles Carroll Middle	1,230	817	151%	Bladensburg High, Parkdale High
G James Gholson Middle	897	870	103%	Bladensburg High
Hyattsville Middle	733	733	100%	Bladensburg High, Northwestern High
William Wirt Middle	1,271	850	150%	Bladensburg High, Parkdale High
Buck Lodge Middle	1,172	1,017	115%	High Point High
Beltsville Academy	362	276	131%	High Point High
Greenbelt Middle	1,387	1,101	126%	High Point High, Parkdale High
Martin Luther King Jr Middle	938	850	110%	High Point High
Nicholas Orem Middle	1,118	829	135%	High Point High, Northwestern High
Total Cluster Area 2	9,108	7,343	124%	

*Building Utilization is the percentage of the Adjusted Enrollment to the State Rated Capacity

Source: PGCPs September 30, 2021, Official Enrollment by School and Grade and SY2021-2022 Feeder Patterns

Table 11. Cluster Area 2 High Schools Enrollment and Utilization

High Schools	Adjusted Enrollment 9/30/21	State Rated Capacity	Building Utilization*
Bladensburg High	1,965	1,785	110%
High Point High	2,627	2,081	126%
Northwestern High	2,219	2,340	95%
Parkdale High	2,460	2,288	108%
Total Cluster Area 2	9,271	8,494	109%

*Building Utilization is the percentage of the Adjusted Enrollment to the State Rated Capacity

Source: PGCPs September 30, 2021, Official Enrollment by School and Grade

CLUSTER AREA 3

Map 4. Cluster Area 3

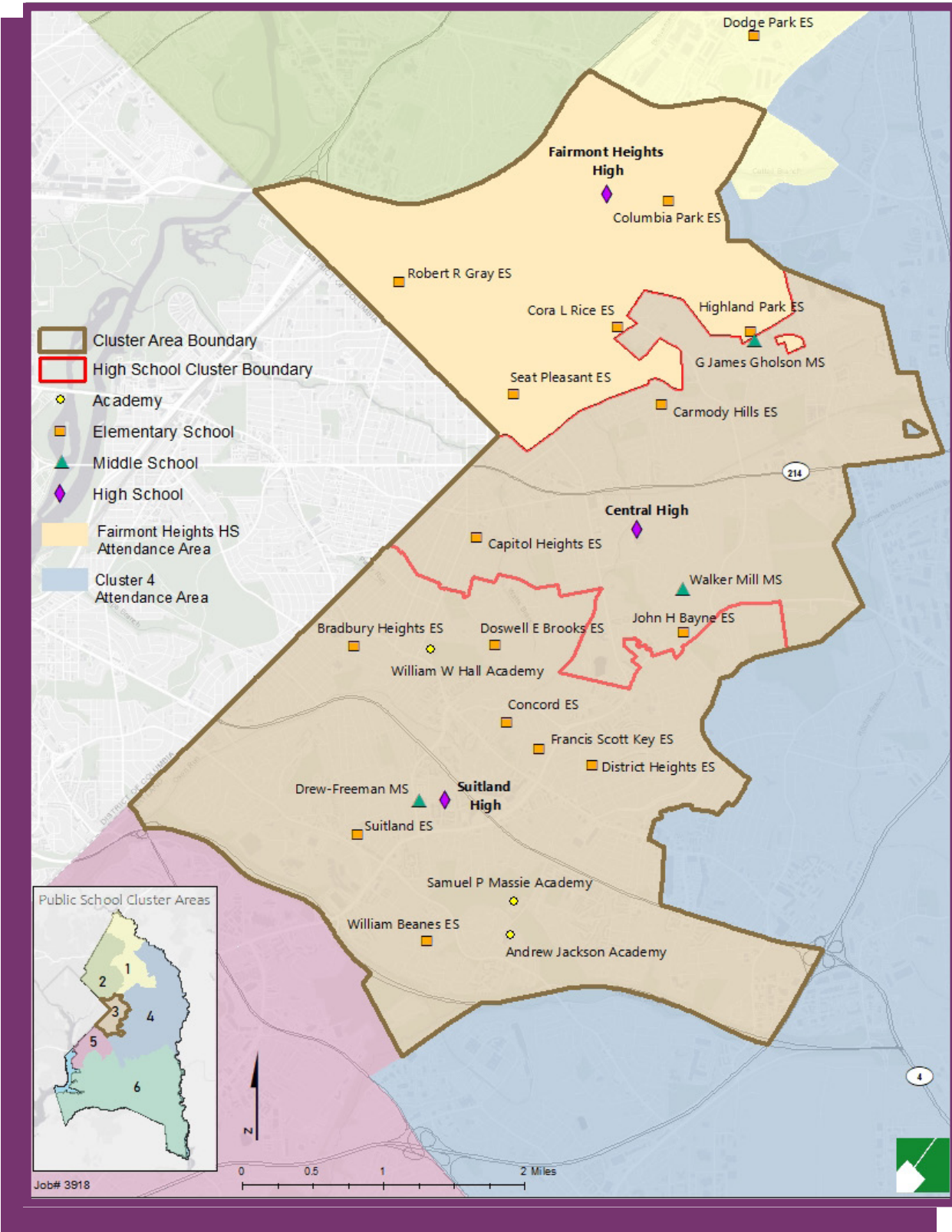


Table 12. Cluster Area 3 Schools Feeder Pattern

High School	Middle School	Elementary School
Central High	G James Gholson Middle	Carmody Hills Elementary Cora L Rice Elementary Highland Park Elementary Seat Pleasant Elementary
	Walker Mill Middle	Capitol Heights Elementary Concord Elementary Doswell E Brooks Elementary John H Bayne Elementary
	William W Hall Academy	William W Hall Academy
Fairmont Heights High	G James Gholson Middle	Carmody Hills Elementary Columbia Park Elementary Cora L Rice Elementary Dodge Park Elementary Highland Park Elementary Robert R Gray Elementary Seat Pleasant Elementary
Suitland High	Drew-Freeman Middle	Bradbury Heights Elementary Concord Elementary District Heights Elementary Francis Scott Key Elementary Suitland Elementary William Beanes Elementary
	Walker Mill Middle	Concord Elementary Doswell E Brooks Elementary John H Bayne Elementary
	Andrew Jackson Academy	Andrew Jackson Academy
	Samuel P Massie Academy	Samuel P Massie Academy
	William W Hall Academy	William W Hall Academy

Source: PGOPS SY2021-2022 Feeder Patterns

**CLUSTER
AREA
3**

Table 13. Cluster Area 3 Elementary Schools Enrollment and Utilization

Elementary Schools	Adjusted Enrollment 9/30/21	State Rated Capacity	Building Utilization*	High School
Carmody Hills Elementary	411	451	91%	Central High, Fairmont Heights High
Cora L Rice Elementary	536	696	77%	Central High
Highland Park Elementary	258	574	45%	Central High
Capitol Heights Elementary	254	363	70%	Central High
Concord Elementary	299	451	66%	Central High, Suitland High
Doswell E Brooks Elementary	222	523	42%	Central High, Suitland High
John H Bayne Elementary	342	542	63%	Central High, Suitland High
Columbia Park Elementary	525	515	102%	Fairmont Heights High
Dodge Park Elementary	509	511	100%	Fairmont Heights High
Robert R Gray Elementary	384	808	48%	Fairmont Heights High
Seat Pleasant Elementary	340	354	96%	Fairmont Heights High
Bradbury Heights Elementary	436	782	56%	Suitland High
District Heights Elementary	358	515	70%	Suitland High
Francis Scott Key Elementary	406	677	60%	Suitland High
Suitland Elementary	510	702	73%	Suitland High
William Beanes Elementary	396	560	71%	Suitland High
Andrew Jackson Academy	307	507	61%	Suitland High
Samuel P Massie Academy	375	523	72%	Suitland High
William W Hall Academy	346	454	76%	Suitland High
Total Cluster Area 3	7,214	10,508	69%	

*Building Utilization is the percentage of the Adjusted Enrollment to the State Rated Capacity
PGCPS September 30, 2021, Official Enrollment by School and Grade and SY2021-2022 Feeder Patterns

Table 14. Cluster Area 3 Middle Schools Enrollment and Utilization

Middle Schools	Adjusted Enrollment 9/30/21	State Rated Capacity	Building Utilization*	High School
G James Gholson Middle	897	870	103%	Central High and Fairmont Heights High
Walker Mill Middle	723	850	85%	Central High, Suitland High
Drew-Freeman Middle	808	808	100%	Suitland High
Andrew Jackson Academy	178	291	61%	Suitland High
Samuel P Massie Academy	177	246	72%	Suitland High
William W Hall Academy	195	255	76%	Suitland High
Total Cluster Area 3	2,978	3,320	90%	

*Building Utilization is the percentage of the Adjusted Enrollment to the State Rated Capacity

Source: PGOPS September 30, 2021, Official Enrollment by School and Grade and SY2021-2022 Feeder Patterns

Table 15. Cluster Area 3 High Schools Enrollment and Utilization

High Schools	Adjusted Enrollment 9/30/21	State Rated Capacity	Building Utilization*
Central High	750	1,143	66%
Fairmont Heights High	933	1,123	83%
Suitland High	1,977	2,447	81%
Total Cluster Area 3	3,660	4,713	78%

*Building Utilization is the percentage of the Adjusted Enrollment to the State Rated Capacity

Source: PGOPS September 30, 2021, Official Enrollment by School and Grade

CLUSTER AREA

4

Map 5. Cluster Area 4

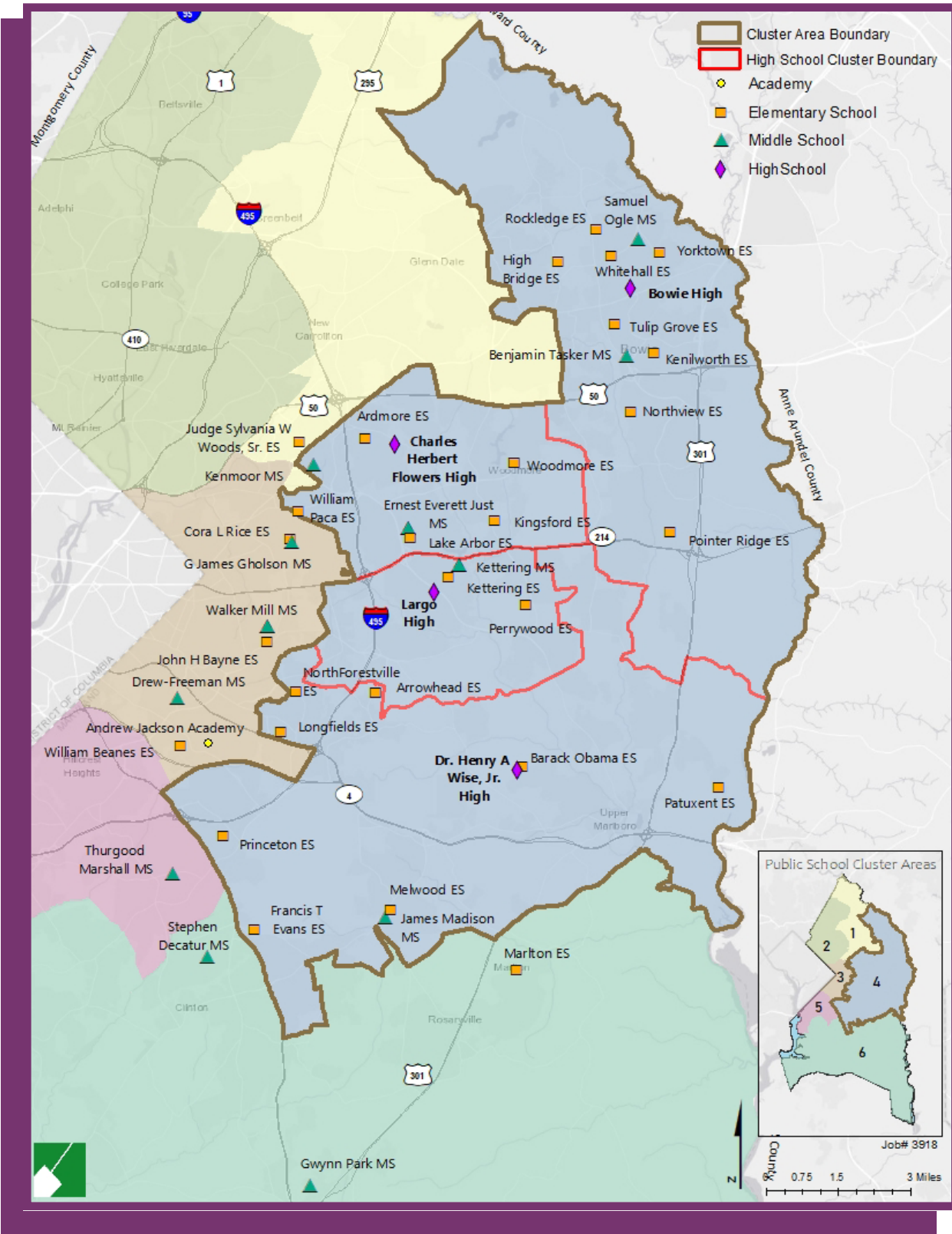


Table 16. Cluster Area 4 Schools Feeder Pattern

High School	Middle School	Elementary School
Bowie High	Benjamin Tasker Middle	Kenilworth Elementary Northview Elementary Pointer Ridge Elementary Tulip Grove Elementary Woodmore Elementary
	Samuel Ogle Middle	High Bridge Elementary Rockledge Elementary Whitehall Elementary Yorktown Elementary
Charles Herbert Flowers High	Ernest Everett Just Middle	Ardmore Elementary Kingsford Elementary Lake Arbor Elementary Woodmore Elementary
	G James Gholson Middle	Cora L Rice Elementary
	Kenmoor Middle	Judge Sylvania W Woods Sr Elementary William Paca Elementary
Dr Henry A Wise Jr High	Drew-Freeman Middle	Longfields Elementary William Beanes Elementary
	Gwynn Park Middle	Marlton Elementary
	James Madison Middle	Barack Obama Elementary Patuxent Elementary Melwood Elementary
	Kettering Middle	Arrowhead Elementary Perrywood Elementary
	Stephen Decatur Middle	Francis T Evans Elementary
	Thurgood Marshall Middle	Princeton Elementary
	Walker Mill Middle	North Forestville Elementary
	Andrew Jackson Academy	Andrew Jackson Academy
Largo High	Ernest Everett Just Middle	Lake Arbor Elementary
	Kettering Middle	Arrowhead Elementary Kettering Elementary Perrywood Elementary
	Walker Mill Middle	John H Bayne Elementary North Forestville Elementary

Source: PGOPS SY2021-2022 Feeder Patterns

**CLUSTER
AREA
4**

Table 17. Cluster Area 4 Elementary Schools Enrollment and Utilization

Elementary Schools	Adjusted Enrollment 9/30/21	State Rated Capacity	Building Utilization*	High School
Kenilworth Elementary	380	448	85%	Bowie High
Northview Elementary	572	797	72%	Bowie High
Pointer Ridge Elementary	288	596	48%	Bowie High
Tulip Grove Elementary	367	457	80%	Bowie High
Woodmore Elementary	459	570	81%	Bowie High, Charles Herbert Flowers High
High Bridge Elementary	339	371	91%	Bowie High
Rockledge Elementary	349	454	77%	Bowie High
Whitehall Elementary	595	411	145%	Bowie High
Yorktown Elementary	381	457	83%	Bowie High
Ardmore Elementary	409	523	78%	Charles Herbert Flowers High
Kingsford Elementary	458	750	61%	Charles Herbert Flowers High
Lake Arbor Elementary	509	796	64%	Charles Herbert Flowers High
Cora L Rice Elementary	536	696	77%	Charles Herbert Flowers High
Judge Sylvania W Woods Sr Elementary	680	719	95%	Charles Herbert Flowers High
William Paca Elementary	522	601	87%	Charles Herbert Flowers High
Longfields Elementary	295	474	62%	Dr Henry A Wise Jr High
William Beanes Elementary	396	560	71%	Dr Henry A Wise Jr High
Marlton Elementary	326	489	67%	Dr Henry A Wise Jr High
Barack Obama Elementary	719	834	86%	Dr Henry A Wise Jr High
Patuxent Elementary	289	451	64%	Dr Henry A Wise Jr High
Melwood Elementary	438	633	69%	Dr Henry A Wise Jr High
Arrowhead Elementary	374	434	86%	Dr Henry A Wise Jr High,
Perrywood Elementary	551	800	69%	Dr Henry A Wise Jr High, Largo High
Francis T Evans Elementary	356	454	78%	Dr Henry A Wise Jr High
Princeton Elementary	308	448	69%	Dr Henry A Wise Jr High
Andrew Jackson Academy	307	507	61%	Dr Henry A Wise Jr High
North Forestville Elementary	286	438	65%	Dr Henry A Wise Jr High, Largo High
Lake Arbor Elementary	509	796	64%	Largo High
Kettering Elementary	390	589	66%	Largo High
John H Bayne Elementary	342	542	63%	Largo High
Total Cluster Area 4	12,730	17,095	74%	

*Building Utilization is the percentage of the Adjusted Enrollment to the State Rated Capacity
PGCPS September 30, 2021, Official Enrollment by School and Grade and SY2021-2022 Feeder Patterns

Table 18. Cluster Area 4 Middle Schools Enrollment and Utilization

Middle Schools	Adjusted Enrollment 9/30/21	State Rated Capacity	Building Utilization*	High School
Benjamin Tasker Middle	1,057	1,040	102%	Bowie High
Samuel Ogle Middle	749	935	80%	Bowie High
Ernest Everett Just Middle	794	824	96%	Charles Herbert Flowers High, Largo High
G James Gholson Middle	897	870	103%	Charles Herbert Flowers High
Kenmoor Middle	951	695	137%	Charles Herbert Flowers High
Drew-Freeman Middle	808	808	100%	Dr Henry A Wise Jr High
Gwynn Park Middle	693	765	91%	Dr Henry A Wise Jr High
James Madison Middle	891	850	105%	Dr Henry A Wise Jr High
Stephen Decatur Middle	779	901	86%	Dr Henry A Wise Jr High
Thurgood Marshall Middle	730	923	79%	Dr Henry A Wise Jr High
Andrew Jackson Academy	178	291	61%	Dr Henry A Wise Jr High
Kettering Middle	932	985	95%	Dr Henry A Wise Jr High, Largo High
Walker Mill Middle	723	850	85%	Dr Henry A Wise Jr High, Largo High
Total Cluster Area 4	10,182	10,737	95%	

*Building Utilization is the percentage of the Adjusted Enrollment to the State Rated Capacity
 source: PGPCS September 30, 2021, Official Enrollment by School and Grade and SY2021-2022 Feeder Patterns

Table 19. Cluster Area 4 High Schools Enrollment and Utilization

High Schools	Adjusted Enrollment 9/30/21	State Rated Capacity	Building Utilization*
Bowie High	2,379	2,772	86%
Charles Herbert Flowers High	2,457	2,174	113%
Dr Henry A Wise Jr High	2,208	2,518	88%
Largo High	870	1,365	64%
Total Cluster Area 4	7,914	8,829	90%

*Building Utilization is the percentage of the Adjusted Enrollment to the State Rated Capacity
 Source: PGPCS September 30, 2021, Official Enrollment by School and Grade

CLUSTER AREA 5

Map 6. Cluster Area 5

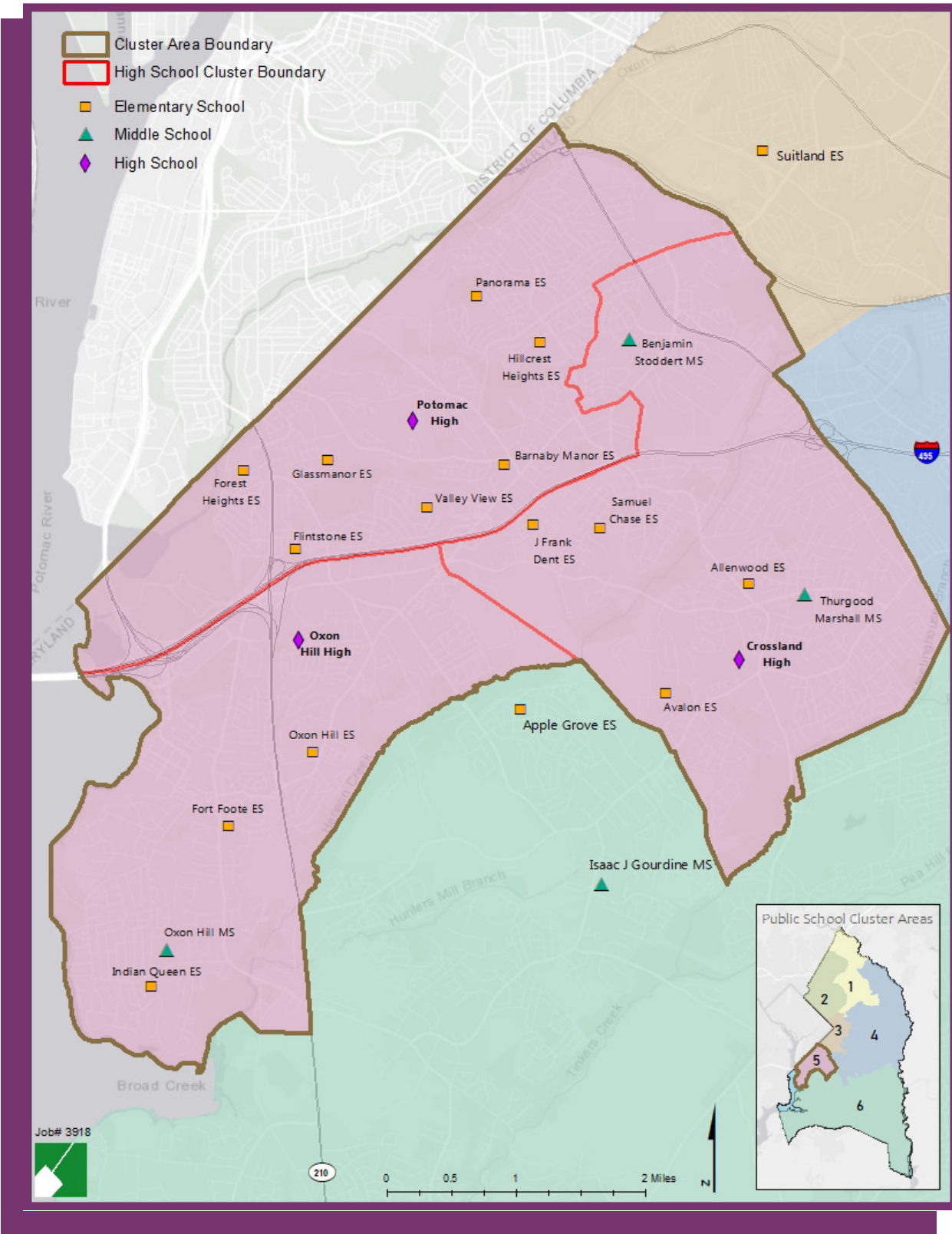


Table 20. Cluster Area 5 Schools Feeder Pattern

High School	Middle School	Elementary School
Crossland High	Benjamin Stoddert Middle	Barnaby Manor Elementary Hillcrest Heights Elementary
	Isaac J Gourdine Middle	Avalon Elementary
	Thurgood Marshall Middle	Allenwood Elementary Avalon Elementary Hillcrest Heights Elementary J Frank Dent Elementary Samuel Chase Elementary Suitland Elementary
Oxon Hill High	Isaac J Gourdine Middle	Apple Grove Elementary
	Oxon Hill Middle	Apple Grove Elementary Flintstone Elementary Fort Foote Elementary Indian Queen Elementary Oxon Hill Elementary
Potomac High	Benjamin Stoddert Middle	Barnaby Manor Elementary Hillcrest Heights Elementary Panorama Elementary
	Oxon Hill Middle	Flintstone Elementary Forest Heights Elementary Glassmanor Elementary Valley View Elementary
	Thurgood Marshall Middle	Barnaby Manor Elementary Valley View Elementary

Source: PGCPs SY2021-2022 Feeder Patterns

**CLUSTER
AREA
5**

Table 21. Cluster Area 5 Elementary Schools Enrollment and Utilization

Elementary Schools	Adjusted Enrollment 9/30/21	State Rated Capacity	Building Utilization*	High School
Barnaby Manor Elementary	477	574	83%	Crossland High, Potomac High
Hillcrest Heights Elementary	408	703	58%	Crossland High, Potomac High
Avalon Elementary	275	435	63%	Crossland High
Allenwood Elementary	330	455	73%	Crossland High
J Frank Dent Elementary	231	365	63%	Crossland High
Samuel Chase Elementary	272	383	71%	Crossland High
Suitland Elementary	510	702	73%	Crossland High
Apple Grove Elementary	449	541	83%	Oxon Hill High
Flintstone Elementary	393	451	87%	Oxon Hill High, Potomac High
Fort Foote Elementary	290	451	64%	Oxon Hill High
Indian Queen Elementary	281	549	51%	Oxon Hill High
Oxon Hill Elementary	223	423	53%	Oxon Hill High
Panorama Elementary	504	691	73%	Potomac High
Forest Heights Elementary	261	314	83%	Potomac High
Glassmanor Elementary	275	335	82%	Potomac High
Valley View Elementary	337	541	62%	Potomac High
Total Cluster Area 5	5,516	7,913	70%	

*Building Utilization is the percentage of the Adjusted Enrollment to the State Rated Capacity

Source: PGCPs September 30, 2021, Official Enrollment by School and Grade and SY2021-2022 Feeder Patterns

Table 23. Cluster Area 5 Middle Schools Enrollment and Utilization

Middle Schools	Adjusted Enrollment 9/30/21	State Rated Capacity	Building Utilization*	High School
Benjamin Stoddert Middle	584	774	75%	Crossland High, Potomac High
Isaac J Gourdine Middle	572	824	69%	Crossland High, Oxon Hill High
Thurgood Marshall Middle	730	923	79%	Crossland High, Potomac High
Oxon Hill Middle	825	783	105%	Oxon Hill High, Potomac High
Total Cluster Area 5	2,711	3,304	82%	

*Building Utilization is the percentage of the Adjusted Enrollment to the State Rated Capacity

Source: PGCPs September 30, 2021, Official Enrollment by School and Grade and SY2021-2022 Feeder Patterns

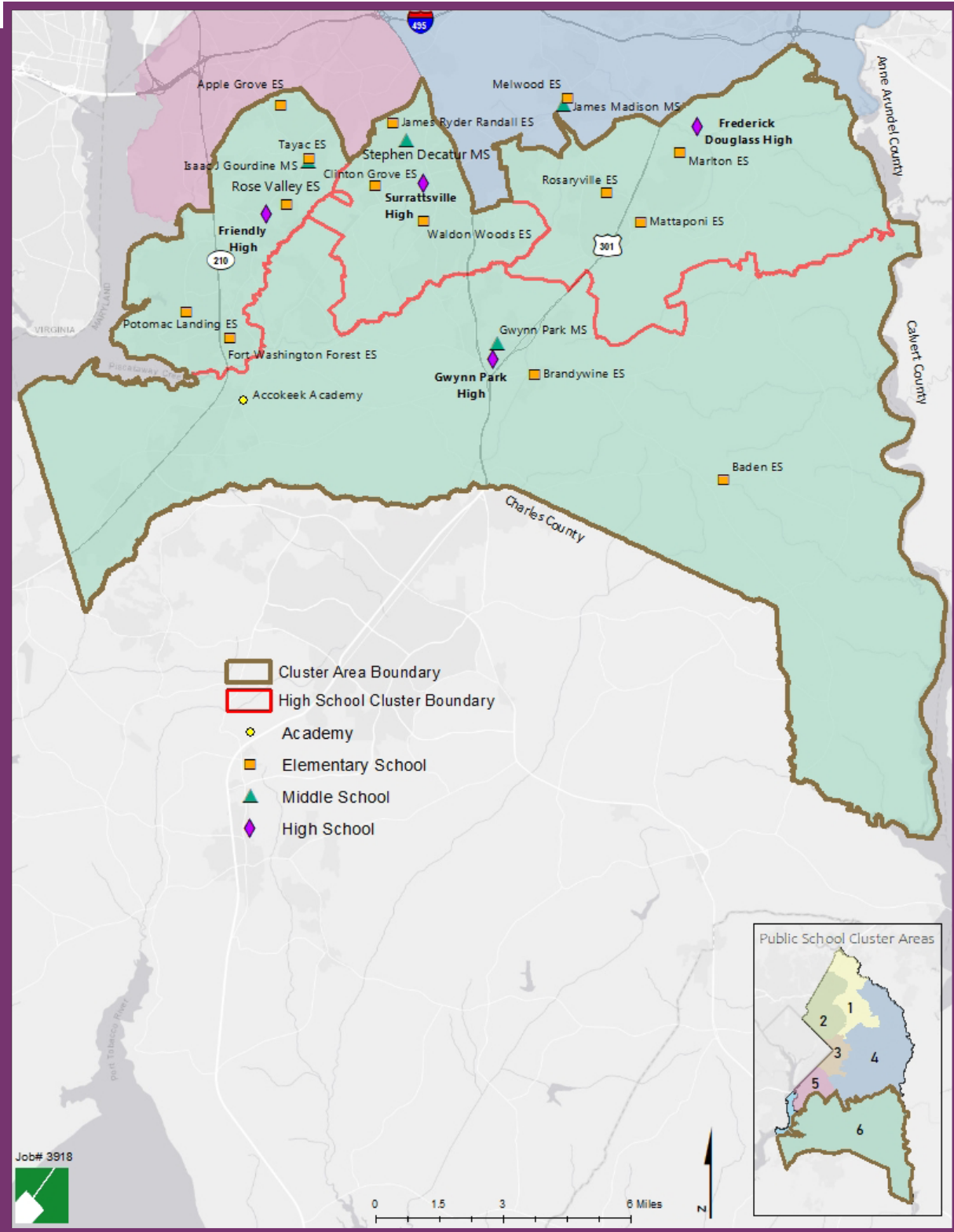
Table 22. Cluster Area 5 High Schools Enrollment and Utilization

High Schools	Adjusted Enrollment 9/30/21	State Rated Capacity	Building Utilization*
Crossland High	1,004	1,775	57%
Oxon Hill High	1,498	1,360	110%
Potomac High	1,216	1,915	63%
Total Cluster Area 5	3,718	5,050	74%

*Building Utilization is the percentage of the Adjusted Enrollment to the State Rated Capacity

Source: PGCPs September 30, 2021, Official Enrollment by School and Grade

Map 7. Cluster Area 6



**CLUSTER
AREA
6**

Table 24. Cluster Area 6 Schools Feeder Pattern

High School	Middle School	Elementary School
Frederick Douglass High	Gwynn Park Middle	Baden Elementary Marlton Elementary Mattaponi Elementary Rosaryville Elementary
	James Madison Middle	Melwood Elementary Rosaryville Elementary
Friendly High	Accokeek Academy	Fort Washington Forest Elementary Potomac Landing Elementary
	Isaac J Gourdine Middle	Apple Grove Elementary Rose Valley Elementary Tayac Elementary
Gwynn Park High	Accokeek Academy	Accokeek Academy Fort Washington Forest Elementary
	Gwynn Park Middle	Baden Elementary Brandywine Elementary Clinton Grove Elementary Fort Washington Forest Elementary
Surrattsville High	Gwynn Park Middle	Clinton Grove Elementary
	Stephen Decatur Middle	Clinton Grove Elementary James Ryder Randall Elementary Waldon Woods Elementary

Source: PGOPS SY2021-2022 Feeder Patterns

Table 25. Cluster Area 6 Elementary Schools Enrollment and Utilization

Elementary Schools	Adjusted Enrollment 9/30/21	State Rated Capacity	Building Utilization*	High School
Baden Elementary	207	337	61%	Frederick Douglass High, Gwynn Park High
Mattaponi Elementary	335	458	73%	Frederick Douglass High
Rosaryville Elementary	436	783	56%	Frederick Douglass High
Marlton Elementary	326	489	67%	Frederick Douglass High
Fort Washington Forest Elementary	359	434	83%	Friendly High, Gwynn Park High
Potomac Landing Elementary	390	454	86%	Friendly High
Apple Grove Elementary	449	541	83%	Friendly High
Rose Valley Elementary	316	428	74%	Friendly High
Tayac Elementary	340	545	62%	Friendly High
Brandywine Elementary	470	477	99%	Gwynn Park High
Clinton Grove Elementary	241	426	57%	Surrattsville High
James Ryder Randall Elementary	253	441	57%	Surrattsville High
Waldon Woods Elementary	532	568	94%	Surrattsville High
Accokeek Academy	671	471	142%	Friendly High, Gwynn Park High
Total Cluster Area 6	5,325	6,852	78%	

*Building Utilization is the percentage of the Adjusted Enrollment to the State Rated Capacity

Source: PGCPs September 30, 2021, Official Enrollment by School and Grade and SY2021-2022 Feeder Patterns

**CLUSTER
AREA
6**

Table 27. Cluster Area 6 Middle Schools Enrollment and Utilization

Middle Schools	Adjusted Enrollment 9/30/21	State Rated Capacity	Building Utilization*	High School
Accokeek Academy	938	957	98%	Friendly High, Gwynn Park High
Gwynn Park Middle	693	765	91%	Frederick Douglass High, Gwynn Park High, Surrattsville High
James Madison Middle	891	850	105%	Frederick Douglass High
Isaac J Gourdine Middle	572	824	69%	Friendly High
Stephen Decatur Middle	779	901	86%	Surrattsville High
Total Cluster Area 6	3,873	4,297	90%	

*Building Utilization is the percentage of the Adjusted Enrollment to the State Rated Capacity
Source: PGCPs September 30, 2021, Official Enrollment by School and Grade and SY2021-2022 Feeder Patterns

Table 26. Cluster Area 6 High Schools Enrollment and Utilization

High Schools	Adjusted Enrollment 9/30/21	State Rated Capacity	Building Utilization*
Frederick Douglass High	1,161	1,410	82%
Friendly High	831	1,351	62%
Gwynn Park High	1,035	1,208	86%
Surrattsville High	711	1,237	57%
Total Cluster Area 6	3,738	5,206	72%

*Building Utilization is the percentage of the Adjusted Enrollment to the State Rated Capacity
Source: PGCPs September 30, 2021, Official Enrollment by School and Grade



Appendices

Appendix A. Adopted Subdivision Regulations

24-4510. Schools Adequacy

(a) Applicability

(1) Unless exempted in accordance with Section 24-4510(a)(3) below, a certificate for schools adequacy shall be reviewed and approved, approved with conditions, or denied in accordance with Section 24-4503, Certificate of Adequacy.

(2) To gain approval of the certificate for schools adequacy, the applicant shall demonstrate the proposed development complies with the LOS standards of Section 24-4510(b) below[,] or provides adequate mitigation (if appropriate), and complies with all other requirements of this Section.

(3) The following are exempt from the requirements of this Section:

(A) A preliminary plan for subdivision (minor or major) which is a redevelopment project that replaces existing dwelling units;

(B) A preliminary plan for subdivision (minor or major) for elderly housing operated in accordance with the State and Federal Fair Housing laws;

(C) A preliminary plan for subdivision (minor or major) that consists of no more than three lots on less than five gross acres of land, whose lots, except for one to be retained by grantor, are to be conveyed to a son or daughter or lineal descendant of the grantor; and

(D) A preliminary plan for subdivision (minor or major) located in the Transit-Oriented/Activity Center base or PD zones.

(b) Adopted LOS Standard for Schools

(1) The adopted LOS standard for schools is based on school clusters, which are groupings of elementary, middle, and high schools that are impacted by the preliminary plan for subdivision (minor or major).

(2) The adopted LOS standard is that the number of students generated by the proposed subdivision at each stage of development will not exceed 105 percent of the state rated capacity, as adjusted by the School Regulations, of the affected elementary, middle, and high school clusters.

(3) The number of elementary, middle, and high school students generated by the proposed subdivision shall be determined in accordance with the pupil yield factors for each dwelling unit type as determined by the Planning Director from historical information provided by the Superintendent of the Prince George's County Public Schools.

(4) The Planning Director shall determine:

(A) The school cluster or clusters impacted by the proposed preliminary plan for subdivision (minor or major).

(B) The actual enrollment, which is the number of elementary, middle, and high school students, as reported by the Superintendent of the Prince George's County Public Schools as of September 30 of the prior year, and as calculated by the Planning Director that is effective in January of each year for use in that calendar year.

(C) The completion enrollment, which is the total number of elementary, middle, and high school students to be generated by the estimated number of residential completions, for each school cluster.

(i) Residential completions are estimated from the total of all substantially completed dwelling units added to the County's assessable tax base in the two previous calendar years.

(ii) In determining completion enrollment, the estimated number of residential completions in a given school cluster will not exceed the number of dwelling units shown on:

(aa) An approved preliminary plan of subdivision (minor or major) with no waiting period, or with a waiting period less than 24 months as of September 30 of each calendar year; and

(bb) All recorded plats not subject to an adequate public facilities test for schools at time of building permit issuance.

(D) The subdivision enrollment, which is the anticipated number of elementary, middle, and high school students to be generated by all dwelling units shown on the proposed preliminary plan of subdivision (minor or major), multiplied by the pupil yield factor.

(E) The cumulative enrollment, which is the total of all subdivision enrollments resulting from approved preliminary plans of subdivision (minor or major) in each school cluster for the calendar year in which an adequate public facilities test is being applied.

(F) The Planning Director shall determine the subdivision's cluster enrollment by adding: the actual number of students in the cluster as of September 30; the number of students anticipated from residential completions in the cluster; the number anticipated from the subdivision; and the number of students anticipated from subdivisions already approved in the cluster within the calendar year. The Planning Director shall then determine the percent capacity by dividing the cluster enrollment by the state rated capacity (adjusted by the School Regulations) of schools in the cluster.

(c) Mitigation

When conditioned upon payment of the schools facility surcharge, or when otherwise exempt from the schools facility surcharge pursuant to Section 10-192.01, School Facilities Surcharge, of the County Code, the subdivision may be approved regardless of actual or projected school capacity.

[Whenever an adequate school facility fee is charged in conjunction with a building permit, it shall be reduced by the full amount of the school facilities surcharge imposed on that same permit.]

* * * * *

Appendix B. SY2021-2022 Official Enrollment by School and Grade

School Type	School	Pre-K	K	1	2	3	4	5	6	7	8	9	10	11	12	Total *	State-Rated Capacity	*Seats Available	*Building Utilization	Board of Ed District	Council District	Legislative District
High	Academy Of Health Sciences At PGCC	-	-	-	-	-	-	-	-	-	-	106	92	159	141	498	-	-	-	6	6	25
Combination	Accokeek Academy	-	121	123	131	130	166	159	185	313	281	-	-	-	-	1,609	1,428	(181)	113%	9	9	27A
Elementary	Adephi Elementary	35	87	94	90	102	104	72	89	-	-	-	-	-	-	673	408	(247)	160%	3	2	47B
Elementary	Allenwood Elementary	20	56	40	57	58	51	48	-	-	-	-	-	-	-	330	455	125	73%	8	8	26
Combination	Andrew Jackson Academy	18	54	36	52	49	34	44	66	47	65	-	-	-	-	465	793	328	59%	7	7	25
High	Annapolis Road Academy	-	-	-	-	-	-	-	-	-	-	50	27	-	-	77	100	23	77%	5	6	23B
Elementary	Apple Grove Elementary	19	60	56	64	58	61	68	63	-	-	-	-	-	-	449	541	92	83%	8	8	26
Elementary	Ardmore Elementary	27	69	62	53	77	59	62	-	-	-	-	-	-	-	409	523	114	78%	4	5	24
Elementary	Arrowhead Elementary	25	47	64	57	60	60	61	-	-	-	-	-	-	-	374	434	60	86%	7	6	25
Elementary	Avalon Elementary	10	45	44	32	37	43	64	-	-	-	-	-	-	-	275	435	160	63%	8	8	26
Elementary	Baden Elementary	38	33	32	25	23	13	23	20	-	-	-	-	-	-	207	337	130	61%	9	9	27A
Elementary	Barack Obama Elementary	38	90	112	105	105	131	138	-	-	-	-	-	-	-	719	834	115	86%	7	6	25
Elementary	Barnaby Manor Elementary	47	72	59	71	77	78	73	-	-	-	-	-	-	-	477	574	97	83%	8	8	26
Elementary	Beacon Heights Elementary	18	46	55	61	54	68	44	60	-	-	-	-	-	-	406	362	(44)	112%	4	3	22
Combination	Beltsville Academy	37	125	114	133	106	136	119	127	122	113	-	-	-	-	1,132	848	(265)	131%	1	1	21
Combination	Benjamin D Foulois Academy	-	43	49	49	51	49	53	74	81	81	-	-	-	-	530	758	228	70%	7	7	25
Middle	Benjamin Stoddert Middle	-	-	-	-	-	-	-	163	196	225	-	-	-	-	584	774	190	75%	7	7	24
Middle	Benjamin Tasker Middle	-	-	-	-	-	-	-	331	360	366	-	-	-	-	1,057	1,040	(17)	102%	5	4	23A
Elementary	Benwyn Heights Elementary	-	49	67	58	62	68	64	68	-	-	-	-	-	-	436	429	(7)	102%	2	3	22
Elementary	Bladensburg Elementary	24	107	90	105	86	88	90	109	-	-	-	-	-	-	699	698	(1)	100%	4	5	47A
High	Bladensburg High	-	-	-	-	-	-	-	-	-	-	817	413	368	367	1,965	1,785	(180)	110%	4	5	47A
Elementary	Bond Mill Elementary	-	79	76	72	74	97	79	-	-	-	-	-	-	-	477	479	2	100%	1	1	21
High	Bowie High	-	-	-	-	-	-	-	-	-	-	702	574	538	565	2,379	2,772	393	86%	5	4	23A
Elementary	Bradbury Heights Elementary	26	50	57	69	54	57	72	51	-	-	-	-	-	-	436	782	346	56%	7	7	24
Elementary	Brandlywine Elementary	-	79	70	86	72	79	84	-	-	-	-	-	-	-	470	477	7	99%	9	9	27A
Middle	Buck Lodge Middle	-	-	-	-	-	-	-	137	517	518	-	-	-	-	1,172	1,017	(155)	115%	3	1	47B
Regional Center	C Elizabeth Rieg	-	5	7	7	10	11	9	8	13	7	2	8	23	5	115	130	15	88%	5	4	23B
Elementary	Calverton Elementary	24	126	138	131	143	122	122	-	-	-	-	-	-	-	806	589	(205)	135%	1	1	21

*Adjusted for half-day PreK

School Type	School	Pre-K	K	1	2	3	4	5	6	7	8	9	10	11	12	Total *	State-Rated Capacity	*Seats Available	Building Utilization	Board of Ed District	Council District	Legislative District
Elementary	Capitol Heights Elementary	12	12	23	44	43	50	70	-	-	-	-	-	-	-	254	363	109	70%	6	7	24
Elementary	Carmody Hills Elementary	39	52	74	63	59	59	65	-	-	-	-	-	-	-	411	451	40	91%	6	7	24
Elementary	Carole Highlands Elementary	22	66	48	67	66	48	53	70	-	-	-	-	-	-	440	535	95	82%	3	2	47B
Elementary	Carrollton Elementary	61	88	89	89	85	82	94	-	-	-	-	-	-	-	588	559	2	100%	2	3	22
Elementary	Catherine T Reed Elementary	20	78	59	89	78	64	80	-	-	-	-	-	-	-	468	457	(11)	102%	1	4	22
High	Central High	-	-	-	-	-	-	-	-	-	-	300	179	108	163	750	1,143	393	66%	6	6	25
Elementary	Cesar Chavez Elementary	-	80	68	62	55	52	43	-	-	-	-	-	-	-	360	357	(3)	101%	3	2	47A
Regional Center	Chapel Forge E C C	220	-	-	-	-	-	-	-	-	-	-	-	-	-	220	260	78	70%	5	4	23B
Middle	Charles Carroll Middle	-	-	-	-	-	-	-	178	529	523	-	-	-	-	1,230	817	(413)	151%	2	3	22
High	Charles Herbert Flowers High	-	-	-	-	-	-	-	-	-	-	754	602	527	574	2,457	2,174	(283)	113%	4	5	24
Elementary	Cherokee Lane Elementary	-	76	84	77	68	81	72	83	-	-	-	-	-	-	541	-	-	-	3	1	47B
Charter	Chesapeake Meth And It Public Charter	-	95	101	101	104	103	102	146	174	179	162	133	131	159	1,690	-	-	-	1	1	21
Charter	Chesapeake Math And It South Public Charter	-	97	103	101	106	102	56	162	158	157	88	94	101	70	1,395	-	-	-	9	9	23B
Elementary	Chillum Elementary	30	55	47	47	58	53	45	-	-	-	-	-	-	-	335	335	-	100%	3	2	47A
Elementary	Clinton Grove Elementary	21	34	38	35	32	41	40	-	-	-	-	-	-	-	241	426	185	57%	9	9	25
Charter	College Park Academy	-	-	-	-	-	-	-	118	121	128	107	80	77	46	677	-	-	-	2	3	22
Elementary	Columbia Park Elementary	34	81	55	67	66	87	75	60	-	-	-	-	-	-	525	515	(10)	102%	4	5	47A
Evening High	Community-Based Classroom	-	-	-	-	-	-	-	-	-	-	-	-	2	56	58	-	-	-	4	5	47A
Elementary	Concord Elementary	24	29	34	35	40	58	36	43	-	-	-	-	-	-	299	451	152	66%	6	7	24
Elementary	Cool Spring Elementary	51	116	97	124	113	104	95	105	-	-	-	-	-	-	805	535	(270)	150%	3	2	47B
Elementary	Cooper Lane Elementary	16	60	60	44	76	70	78	49	-	-	-	-	-	-	453	494	41	92%	4	5	47A
Elementary	Cora L Rice Elementary	39	66	76	86	101	78	90	-	-	-	-	-	-	-	536	696	160	77%	6	5	24
High	Croom High	-	-	-	-	-	-	-	-	-	-	-	-	3	36	39	120	81	33%	9	9	27B
High	Crossland High	-	-	-	-	-	-	-	-	-	-	413	207	198	186	1,004	1,775	771	57%	8	8	26
Elementary	Deerfield Run Elementary	28	116	104	93	106	82	88	-	-	-	-	-	-	-	617	570	(33)	106%	1	1	23A
Elementary	District Heights Elementary	20	51	57	47	50	67	66	-	-	-	-	-	-	-	358	515	157	70%	7	6	25
Elementary	Dodge Park Elementary	34	74	59	72	64	78	66	62	-	-	-	-	-	-	509	511	2	100%	4	5	22
Combination	Dora Kennedy French Immersion	-	100	89	68	80	72	62	71	66	50	-	-	-	-	658	-	-	-	2	4	22
Elementary	Doswell E Brooks Elementary	17	25	31	31	29	31	24	34	-	-	-	-	-	-	222	523	301	42%	6	7	24

School Type	School	Pre-K	K	1	2	3	4	5	6	7	8	9	10	11	12	Total *	State-Rated Capacity	*Seats Available	Building Utilization	Board of Ed District	Council District	Legislative District
High	Dr Henry A Wise, Jr. High	-	-	-	-	-	-	-	-	-	-	662	531	512	503	2,208	2,518	310	88%	7	6	25
Middle	Drew-Freeman Middle	-	-	-	-	-	-	-	192	301	315	-	-	-	-	808	-	-	-	7	7	24
High	DuVal High	-	-	-	-	-	-	-	-	-	-	880	456	529	389	2,254	2,258	4	100%	1	4	22
Middle	Dwight D Eisenhower Middle	-	-	-	-	-	-	-	294	401	391	-	-	-	-	1,086	1,049	(37)	104%	1	1	21
Elementary	Edward M Felegy Elementary	53	108	89	105	99	119	114	-	-	-	-	-	-	-	687	879	192	78%	3	2	22
High	Eleanor Roosevelt High	-	-	-	-	-	-	-	-	-	-	726	543	561	590	2,420	2,096	(324)	115%	2	4	22
Middle	Ernest Everett Just Middle	-	-	-	-	-	-	-	261	265	268	-	-	-	-	794	824	30	96%	6	6	24
Charter	Excel Academy Public Charter	-	45	50	49	45	48	50	43	40	43	-	-	-	-	413	470	57	88%	4	5	22
High	Fairmont Heights High	-	-	-	-	-	-	-	-	-	-	330	214	216	173	933	1,123	190	83%	4	5	47A
Elementary	Flintstone Elementary	18	54	54	69	69	61	68	-	-	-	-	-	-	-	393	451	58	87%	8	8	26
Elementary	Forest Heights Elementary	18	31	39	31	34	40	33	35	-	-	-	-	-	-	261	314	53	83%	8	8	26
Elementary	Fort Foote Elementary	19	40	37	30	37	44	37	46	-	-	-	-	-	-	290	451	161	64%	8	8	26
Elementary	Fort Washington Forest Elem	40	49	62	33	31	50	58	36	-	-	-	-	-	-	359	434	75	83%	9	9	26
Regional Center	Frances R Fuchs E C C	204	-	-	-	-	-	-	-	-	-	-	-	-	-	204	260	91	65%	1	1	21
Elementary	Francis Scott Key Elementary	34	47	66	54	84	64	57	-	-	-	-	-	-	-	406	677	271	60%	6	7	24
Elementary	Francis T Evans Elementary	30	45	65	51	59	58	48	-	-	-	-	-	-	-	356	454	98	78%	9	8	25
High	Frederick Douglass High	-	-	-	-	-	-	-	-	-	-	370	288	223	280	1,161	1,410	249	82%	9	9	23B
High	Friendly High	-	-	-	-	-	-	-	-	-	-	285	237	167	142	831	1,351	520	62%	8	9	26
Middle	G James Gholson Middle	-	-	-	-	-	-	-	136	372	389	-	-	-	-	897	870	(27)	103%	6	5	24
Elementary	Gaywood Elementary	32	66	69	77	69	92	78	-	-	-	-	-	-	-	483	386	(81)	121%	4	3	22
Elementary	Gladys Noon Spellman Elementary	20	69	70	73	71	73	69	67	-	-	-	-	-	-	512	564	52	91%	4	5	47A
Elementary	Glassmanor Elementary	-	49	42	38	53	48	45	-	-	-	-	-	-	-	275	335	60	82%	8	8	26
Elementary	Glenn Dale Elementary	-	-	-	61	95	118	114	-	-	-	-	-	-	-	388	460	72	84%	4	5	24
Elementary	Glenn Dale Elementary	-	93	79	83	113	72	109	-	-	-	-	-	-	-	549	404	(145)	136%	4	3	24
Elementary	Glenridge Elementary	15	111	77	105	109	94	89	103	-	-	-	-	-	-	703	828	133	84%	4	3	22
Combination	Green Valley Academy	-	-	-	-	-	-	-	-	1	3	27	18	-	-	49	230	181	21%	7	7	24
Pre-K	Greenbelt Day Care Center	12	-	-	-	-	-	-	-	-	-	-	-	-	-	12	-	-	-	2	4	22
Elementary	Greenbelt Elementary	23	100	81	94	95	85	86	-	-	-	-	-	-	-	564	568	16	97%	2	4	22
Middle	Greenbelt Middle	-	-	-	-	-	-	-	339	511	537	-	-	-	-	1,387	1,101	(286)	126%	2	4	22
High	Gwynn Park High	-	-	-	-	-	-	-	-	-	-	318	266	235	216	1,035	1,208	173	86%	9	9	27B
Middle	Gwynn Park Middle	-	-	-	-	-	-	-	215	223	255	-	-	-	-	693	765	72	91%	9	9	27B

School Type	School	Pre-K	K	1	2	3	4	5	6	7	8	9	10	11	12	Total *	State-Rated Capacity	*Seats Available	Building Utilization	Board of Ed District	Council District	Legislative District
Regional Center	H Winship Wheatley E C C	197	-	-	-	-	-	-	-	-	-	-	-	-	-	197	420	266	37%	6	6	25
Elementary	Heather Hills Elementary	-	-	53	90	77	94	-	-	-	-	-	-	-	-	314	368	54	85%	5	4	23B
Elementary	High Bridge Elementary	-	53	40	59	64	45	78	-	-	-	-	-	-	-	339	371	32	91%	5	4	23A
High	High Point High	-	-	-	-	-	-	-	-	-	-	-	568	558	441	2,627	2,081	(546)	126%	1	1	21
Elementary	Highland Park Elementary	17	30	45	28	35	27	42	34	-	-	-	-	-	-	258	574	316	45%	6	7	24
Elementary	Hillcrest Heights Elementary	37	53	49	75	66	58	70	-	-	-	-	-	-	-	408	703	295	58%	8	7	25
Elementary	Hollywood Elementary	32	98	70	74	72	52	80	-	-	-	-	-	-	-	478	339	(123)	136%	2	1	21
Elementary	Hjattsville Elementary	29	74	66	73	50	80	68	-	-	-	-	-	-	-	440	406	(34)	108%	3	2	22
Middle	Hjattsville Middle	-	-	-	-	-	-	-	186	255	292	-	-	-	-	733	-	-	-	3	2	22
Charter	Imagine Andrews Public Charter	-	31	42	50	45	45	65	49	41	41	-	-	-	-	409	-	-	-	9	8	25
Charter	Imagine Foundations At Leeland PCS	-	44	56	43	50	55	61	59	58	53	-	-	-	-	479	-	-	-	5	6	25
Charter	Imagine Foundations At Morningside PCS	-	33	42	40	39	47	42	50	52	44	-	-	-	-	389	365	(24)	107%	7	7	25
Charter	Imagine Lincoln PCS	-	20	28	40	42	47	52	50	46	43	-	-	-	-	368	-	-	-	7	7	24
Combination	Incarcerated Youth Center (Jac's)	-	-	-	-	-	-	-	-	-	-	1	2	3	1	7	-	-	-	7	6	25
Elementary	Indian Queen Elementary	19	34	28	40	38	42	40	40	-	-	-	-	-	-	281	549	268	51%	8	8	26
High	International High School @ Langley Park	-	-	-	-	-	-	-	-	-	-	191	3	79	64	337	447	110	75%	2	5	47A
High	International High School @ Largo	-	-	-	-	-	-	-	-	-	-	198	33	86	68	385	363	(22)	106%	6	6	25
Middle	Isaac J Gourdine Middle	-	-	-	-	-	-	-	142	219	211	-	-	-	-	572	824	252	69%	8	8	26
Elementary	J Frank Dent Elementary	8	36	33	27	24	33	24	46	-	-	-	-	-	-	231	365	134	63%	8	8	25
Regional Center	James E Duckworth	-	7	10	14	10	7	5	7	4	5	13	4	10	2	98	120	22	82%	1	1	21
Elementary	James H Harrison Elementary	20	47	33	46	38	52	33	38	-	-	-	-	-	-	307	343	36	90%	1	1	23A
Middle	James Madison Middle	-	-	-	-	-	-	-	272	297	322	-	-	-	-	891	850	(41)	105%	9	9	23B
Elementary	James Mc Henry Elementary	40	117	116	120	109	113	123	-	-	-	-	-	-	-	738	537	(181)	134%	4	5	24
Regional Center	James Ryder Randall E C C	95	-	-	-	-	-	-	-	-	-	-	-	-	-	95	-	-	0%	8	9	25
Elementary	James Ryder Randall Elementary	-	40	42	43	43	38	47	-	-	-	-	-	-	-	253	441	188	57%	8	9	25
Elementary	John H Bayne Elementary	26	39	48	49	61	58	61	-	-	-	-	-	-	-	342	542	200	63%	6	6	25

School Type	School	Pre-K	K	1	2	3	4	5	6	7	8	9	10	11	12	Total *	State-Rated Capacity	*Seats Available	*Building Utilization	Board of Ed District	Council District	Legislative District
Combination	John Hanson Montessori	115	58	47	60	47	44	45	32	30	33	-	-	-	-	511	902	417	54%	8	8	26
Elementary	Judge Sylvia W Woods, Sr. Elem	36	84	97	88	81	87	103	104	-	-	-	-	-	-	680	719	39	95%	4	5	22
Combination	Judith P Hoyer Montessori	79	50	34	38	28	35	32	24	25	19	-	-	-	-	364	439	93	79%	6	5	24
Elementary	Kenilworth Elementary	-	71	50	70	57	71	61	-	-	-	-	-	-	-	380	448	68	85%	5	4	23B
Regional Center	Kenmoor E C C	121	-	-	-	-	-	-	-	-	-	-	-	-	-	121	250	155	38%	4	5	24
Middle	Kenmoor Middle	-	-	-	-	-	-	-	232	363	356	-	-	-	-	951	695	(256)	137%	4	5	22
Elementary	Kettering Elementary	25	58	57	60	62	56	72	-	-	-	-	-	-	-	390	589	199	66%	6	6	25
Middle	Kettering Middle	-	-	-	-	-	-	-	320	319	293	-	-	-	-	932	985	53	95%	6	6	25
Elementary	Kingsford Elementary	39	58	72	63	79	84	67	-	-	-	-	-	-	-	462	750	292	61%	5	6	24
Elementary	Lake Arbor Elementary	33	95	81	72	54	104	70	-	-	-	-	-	-	-	509	796	287	64%	6	6	24
Elementary	Lamont Elementary	66	60	85	58	82	85	77	-	-	-	-	-	-	-	513	503	23	95%	2	3	22
Elementary	Langley Pk- McCormick Elementary	41	123	101	116	101	93	105	91	-	-	-	-	-	-	771	486	(285)	159%	3	2	47B
High	Largo High	-	-	-	-	-	-	-	-	-	-	315	194	168	193	870	1,365	495	64%	6	6	25
Elementary	Laurel Elementary	28	109	83	105	76	74	79	-	-	-	-	-	-	-	554	493	(47)	110%	1	1	21
High	Laurel High	-	-	-	-	-	-	-	-	-	-	725	463	435	393	2,016	1,867	(149)	108%	1	1	21
Charter	Legends Public Charter School	-	99	99	99	98	99	95	103	-	-	-	-	-	-	692	-	-	-	0	5	24
Elementary	Lewisdale Elementary	33	116	83	89	100	87	89	-	-	-	-	-	-	-	597	471	(109)	123%	3	2	47B
Elementary	Longfields Elementary	14	36	24	53	42	52	44	30	-	-	-	-	-	-	295	474	179	62%	7	6	25
Elementary	Magnolia Elementary	15	49	63	65	48	73	78	76	-	-	-	-	-	-	467	449	(10)	102%	2	3	22
Regional Center	Margaret Brent	-	1	5	7	3	9	7	8	7	11	-	-	-	-	58	160	102	36%	2	3	22
Elementary	Marion Elementary	33	44	47	53	58	44	47	-	-	-	-	-	-	-	326	489	163	67%	9	9	23B
Middle	Martin Luther King, Jr. Middle	-	-	-	-	-	-	-	307	293	338	-	-	-	-	938	850	(88)	110%	1	1	21
Elementary	Mary Harris "Mother" Jones Elem	42	167	115	156	155	153	171	-	-	-	-	-	-	-	959	769	(169)	122%	3	2	21
Elementary	Mattaponi Elementary	-	48	41	51	63	65	67	-	-	-	-	-	-	-	335	458	123	73%	9	9	27B
Combination	Maya Angelou French Immersion	-	55	76	57	42	41	43	42	47	35	-	-	-	-	438	670	232	65%	8	7	26
Elementary	Melwood Elementary	-	74	77	57	75	78	77	-	-	-	-	-	-	-	438	633	195	69%	9	9	23B
Elementary	Montpelier Elementary	36	93	94	84	90	89	83	-	-	-	-	-	-	-	569	609	40	93%	1	1	23A
Elementary	Mt Rainier Elementary	33	46	36	40	43	39	48	43	-	-	-	-	-	-	328	406	78	81%	3	2	47A

School Type	School	Pre-K	K	1	2	3	4	5	6	7	8	9	10	11	12	Total *	State-Rated Capacity	*Seats Available	Building Utilization	Board of Ed District	Council District	Legislative District
Middle	Nicholas Orem Middle	-	-	-	-	-	-	-	269	447	402	-	-	-	-	1,118	829	(289)	135%	3	2	22
Elementary	North Forestville Elementary	20	46	41	45	47	49	38	-	-	-	-	-	-	-	286	438	152	65%	7	6	25
Elementary	Northview Elementary	36	93	83	81	92	93	94	-	-	-	-	-	-	-	572	797	225	72%	5	4	23B
High	Northwestern High	-	-	-	-	-	-	-	-	-	-	779	519	453	468	2,219	2,340	121	95%	3	2	47B
Elementary	Oaklands Elementary	22	69	56	55	55	57	54	-	-	-	-	-	-	-	368	408	51	88%	1	1	21
Elementary	Overlook Elementary	15	59	66	61	64	42	45	-	-	-	-	-	-	-	352	545	193	65%	7	7	24
Elementary	Oxon Hill Elementary	19	27	30	33	38	42	34	-	-	-	-	-	-	-	223	423	200	53%	8	8	26
High	Oxon Hill High	-	-	-	-	-	-	-	-	-	-	444	417	348	289	1,498	1,360	(138)	110%	8	8	26
Middle	Oxon Hill Middle	-	-	-	-	-	-	-	166	336	323	-	-	-	-	825	783	(42)	105%	8	8	26
Elementary	Paint Branch Elementary	44	46	46	67	39	39	42	41	-	-	-	-	-	-	364	357	(7)	102%	2	3	21
Elementary	Panorama Elementary	22	79	70	80	81	79	93	-	-	-	-	-	-	-	504	691	187	73%	8	7	26
High	Parkdale High	-	-	-	-	-	-	-	-	-	-	971	562	478	449	2,460	2,288	(172)	108%	2	3	22
Elementary	Patuxent Elementary	19	43	46	46	48	43	44	-	-	-	-	-	-	-	289	451	162	64%	5	9	23B
Elementary	Perrywood Elementary	-	98	79	100	88	84	102	-	-	-	-	-	-	-	551	800	249	69%	6	6	25
Elementary	Phyllis E Williams Elementary	-	76	84	67	54	40	55	-	-	-	-	-	-	-	376	538	162	70%	6	6	24
Elementary	Pointer Ridge Elementary	-	43	50	48	47	51	49	-	-	-	-	-	-	-	288	596	308	48%	5	4	23B
Elementary	Port Towns Elementary	70	115	118	114	119	126	133	135	-	-	-	-	-	-	930	809	(121)	115%	4	5	47A
High	Potomac High	-	-	-	-	-	-	-	-	-	-	453	314	262	187	1,216	1,915	699	63%	8	7	26
Elementary	Potomac Landing Elementary	20	50	50	51	46	55	55	63	-	-	-	-	-	-	390	454	64	86%	9	8	26
Elementary	Princeton Elementary	28	46	45	47	52	47	43	-	-	-	-	-	-	-	308	448	140	69%	7	8	26
Elementary	Ridgecrest Elementary	38	86	90	74	89	67	75	84	-	-	-	-	-	-	603	693	90	87%	3	2	47A
Elementary	Rivendale Elementary	40	92	108	103	98	90	104	-	-	-	-	-	-	-	635	563	(72)	113%	2	3	22
Elementary	Robert Frost Elementary	-	41	52	36	50	44	43	-	-	-	-	-	-	-	266	309	43	86%	2	3	22
Combination	Robert Goddard Montessori	115	63	49	43	42	43	38	45	30	22	-	-	-	-	490	499	38	92%	2	4	22
Elementary	Robert R Gray Elementary	35	49	45	39	50	56	44	66	-	-	-	-	-	-	384	808	424	48%	4	5	47A
Elementary	Rockledge Elementary	38	57	47	48	54	49	56	-	-	-	-	-	-	-	349	454	105	77%	5	4	23B
Elementary	Rogers Heights Elementary	34	86	82	94	87	97	90	102	-	-	-	-	-	-	672	610	(62)	110%	4	5	47A
Elementary	Rosa L Parks Elementary	25	88	75	87	74	98	95	78	-	-	-	-	-	-	620	810	190	77%	3	2	47B
Elementary	Rosaryville Elementary	40	66	48	73	76	65	68	-	-	-	-	-	-	-	436	783	347	56%	9	9	27B
Elementary	Rose Valley Elementary	20	49	43	51	58	52	43	-	-	-	-	-	-	-	316	428	112	74%	8	9	26
Elementary	Samuel Chase Elementary	27	44	37	44	32	48	40	-	-	-	-	-	-	-	272	383	111	71%	8	8	25

School Type	School	Pre-K	K	1	2	3	4	5	6	7	8	9	10	11	12	Total *	State-Rated Capacity	*Seats Available	*Building Utilization	Board of Ed District	Council District	Legislative District															
Middle	Samuel Ogle Middle	-	-	-	-	-	-	-	236	240	273	-	-	-	-	749	935	186	80%	5	4	23B															
Combination	Samuel P. Massie Academy	25	52	43	60	69	58	68	47	64	66	-	-	-	-	552	769	217	72%	7	7	25															
Elementary	Scotchtown Hills Elementary	33	97	88	84	78	87	70	87	-	-	-	-	-	-	624	790	166	79%	1	1	21															
Elementary	Seabrook Elementary	25	52	51	44	68	45	58	-	-	-	-	-	-	-	343	409	66	84%	4	3	22															
Elementary	Seat Pleasant Elementary	19	48	35	54	52	45	40	47	-	-	-	-	-	-	340	354	14	96%	6	7	24															
Elementary	Springhill Lake Elementary	-	122	117	110	135	145	137	-	-	-	-	-	-	-	766	561	(205)	137%	1	4	22															
Middle	Stephen Decatur Middle	-	-	-	-	-	-	-	242	285	252	-	-	-	-	779	901	122	86%	9	9	25															
Elementary	Suitland Elementary	25	66	56	76	79	66	75	67	-	-	-	-	-	-	510	702	192	73%	7	7	25															
High	Suitland High	-	-	-	-	-	-	-	-	-	-	742	436	372	427	1,977	2,447	470	81%	7	7	24															
High	Surratsville High	-	-	-	-	-	-	-	-	-	-	255	167	138	151	711	1,237	526	57%	9	9	27A															
High	Tall Oaks High	-	-	-	-	-	-	-	-	-	-	-	-	25	43	68	192	124	35%	5	6	23B															
Elementary	Tajac Elementary	20	59	65	43	52	50	51	-	-	-	-	-	-	-	340	545	205	62%	8	8	26															
Elementary	Templeton Elementary	35	127	131	158	137	116	125	-	-	-	-	-	-	-	829	565	(264)	147%	4	5	47A															
Combination	Thomas G Pullen	-	68	71	74	72	71	71	99	98	98	-	-	-	-	722	881	159	82%	6	5	24															
Middle	Thomas Johnson Middle	-	-	-	-	-	-	-	438	433	473	-	-	-	-	1,344	1,030	(314)	130%	4	5	24															
Elementary	Thomas S Stone Elementary	32	82	58	64	65	71	79	-	-	-	-	-	-	-	451	638	187	71%	3	2	47A															
Middle	Thurgood Marshall Middle	-	-	-	-	-	-	-	203	249	278	-	-	-	-	730	923	193	79%	8	8	26															
Elementary	Tulip Grove Elementary	-	63	47	85	56	53	63	-	-	-	-	-	-	-	367	457	90	80%	5	4	23A															
Elementary	University Park Elementary	14	56	80	57	59	57	61	45	-	-	-	-	-	-	429	565	136	76%	3	3	22															
Elementary	Valley View Elementary	20	34	44	75	39	59	66	-	-	-	-	-	-	-	337	541	204	62%	8	8	26															
Elementary	Vansville Elementary	39	107	89	112	99	127	118	-	-	-	-	-	-	-	691	836	145	83%	1	1	21															
Elementary	Waldon Woods Elementary	20	71	82	95	84	84	96	-	-	-	-	-	-	-	532	568	36	94%	9	9	27A															
Middle	Walker Mill Middle	-	-	-	-	-	-	-	195	238	290	-	-	-	-	723	850	127	85%	6	6	25															
Elementary	Whitehall Elementary	-	91	90	101	92	121	100	-	-	-	-	-	-	-	595	411	(184)	145%	5	4	23B															
Elementary	William Beanes Elementary	33	72	49	57	61	66	58	-	-	-	-	-	-	-	396	560	164	71%	7	7	25															
Elementary	William Paca Elementary	37	89	81	63	71	89	92	-	-	-	-	-	-	-	522	601	79	87%	6	5	24															
Combination	William W. Hall Academy	32	50	63	57	43	49	52	64	59	72	-	-	-	-	541	709	168	76%	6	7	24															
Middle	William Wirt Middle	-	-	-	-	-	-	-	175	550	546	-	-	-	-	1,271	850	(421)	150%	2	3	22															
Elementary	Woodmore Elementary	30	69	60	79	71	67	83	-	-	-	-	-	-	-	459	570	111	81%	5	6	23B															
Elementary	Woodridge Elementary	19	40	41	36	40	43	39	43	-	-	-	-	-	-	301	337	36	89%	4	3	22															
Elementary	Yorktown Elementary	-	59	63	75	55	57	72	-	-	-	-	-	-	-	381	457	76	83%	5	4	23B															
Total Prince George's County Public Schools																4,106	9,336	8,980	9,564	9,547	9,723	9,799	9,921	9,896	10,085	13,246	8,644	8,093	7,837	128,777							

Acknowledgments

Andree Green Checkley, Esq.	Planning Director
Derick P. Berlage	Acting Deputy Director of Operations
Suzann King	Deputy Director of Administration
David Warner	Principal Counsel, Office of the General Counsel
Katina Shoulars	Division Chief, Countywide Planning Division
James Cannistra	Division Chief, Information Management Division

Project Team Core Members

Maria Martin	Countywide Planning Division
Michael Shean	Supervisor, GIS Section, Information Management Division
Audrey Graham	GIS Specialist II, Information Management Division
Paul H. Patnode, AICP	Planner - GIS Specialist III, Information Management Division

Technical and Administrative Assistance

Dan Hartmann	Administrative Manager
Carly Brockinton	Senior Public Affairs and Marketing Specialist

Prince George's County Public Schools

Elizabeth Chaisson	CIP Officer, Department of Capital Programs
Rhianna McCarte	Manager - Pupil Accounting & School Boundaries, Department of Capital Programs
John C. Wooden	Planning and School Boundaries Analyst, Department of Capital Programs



The Maryland-National Capital Park and Planning Commission
Prince George's County Planning Department
14741 Governor Oden Bowie Drive
Upper Marlboro, MD 20772

www.pgplanning.org