

Maryland Forest Conservation Act FY 2018 Annual Report

Prince George's County, Maryland

**Submitted by the
Environmental Planning Section
Countywide Planning Division
Prince George's County Planning Department
The Maryland-National Capital Park and Planning Commission**

With assistance from the Prince George's County

**Department of
Permitting, Inspections and Enforcement
and the
Department of the Environment**

March 2019 (Revised June 2019)

Maryland Forest Conservation Act
FY 2018 Annual Report (Revised June 2019)
Prince George's County, Maryland
Reporting Period: FY 2018 (July 1, 2017 through June 30, 2018)

Local Forest Conservation Annual Report Summary

This report contains the specific information required for the annual Maryland Forest Conservation Act (FCA) report required by the Maryland Department of Natural Resources (DNR) in the Local Forest Conservation Annual Report spreadsheet. The data required in the Annual Report were first standardized by DNR in a spreadsheet format for the FY 2008 report for all reporting entities, so statewide data could be combined into a statewide report for analysis and tracking of benchmarks.

In FY 2009, the annual reporting requirements were expanded by legislation to include the submittal of a GIS layer depicting the digitized locations of approved upland and floodplain forest retention and planting areas. This information is forwarded to the Maryland Department of Natural Resources for consolidation into a statewide Forest Conservation layer.

There were no significant revisions to the Maryland Code of Regulations affecting forest conservation reporting during the 2018 Legislative Session.

This report contains information about the implementation of the Woodland and Wildlife Habitat Conservation Ordinance (WCO) in Prince George's County, Maryland for FY 2018, as tracked by the Environmental Planning Section, Planning Department, Maryland-National Capital Park and Planning Commission (M-NCPPC) and included in Attachment 2, and supplemental information provided by the Prince George's County Departments of the Environment (DoE) and included in Attachment 3 and Permitting, Inspections and Enforcement (DPIE) and included in Attachment 4.

The information contained in this report is summarized on Attachment 1 for inclusion in a statewide annual report on the Forest Conservation Act compiled by the Maryland Forest Service, Department of Natural Resources, for the Legislature. The report data is compiled in a spreadsheet-format which includes information submitted from all local jurisdictions with Forest Conservation Act authority in the state.

Standard Exemptions for Development Sites

Standard exemptions are for sites with a gross tract area of less than 40,000 square feet, sites with less than 10,000 square feet of woodland regardless of the gross tract area, and projects subject to the State Reforestation Act §5-103. Sites within the Chesapeake Bay Critical Area are exempt from the Woodland Conservation Ordinance requirements; however, an exemption letter is not required because they are subject to Subtitle 5B. Properties that have prior Tree Conservation Plan approvals may not be issued a standard exemption. Letters of exemption are issued for submittal at the time of grading permit application to demonstrate conformance with the Woodland Conservation Ordinance if a tree conservation plan is not required.

A total of 196 standard exemptions were issued in the FY 2018 reporting period.

Numbered Exemptions for Specific Activities

Numbered exemptions are issued for cumulative woodland disturbances of less than 5,000 square feet, woodland disturbances of less than 20,000 square feet of woodland for a governmental or linear project, or forest harvesting during any five-year period for properties which would otherwise be subject to the requirements of the Prince George's County Woodland Conservation Ordinance. Properties that have prior Tree Conservation Plan approvals may not be issued a numbered exemption. Letters of exemption must be submitted at the time of grading permit application to demonstrate conformance with the Woodland Conservation Ordinance if a tree conservation plan is not required.

In March 2016, the Environmental Planning Section began to issue separate identified numbered letters of exemption for projects associated with the Clean Water Partnership in Prince George's County. The Clean Water Partnership is an agreement between County government and the private sector to retrofit up to 4,000 acres of impervious surfaces using green infrastructure. These projects are typically in areas where there is no woodland, or where there are existing stormwater management easements and the woodland has been counted as previously cleared. These small projects are subject to the county grading code which requires a Type 2 Tree Conservation Plan or Numbered Letter of Exemption to obtain a grading permit. Most of these projects that have minimal or no associated clearing and are eligible for a numbered letter of exemption, which is issued jointly with a Natural Resources Inventory - Equivalency Letter. These letters are assigned an application number identified by E-CWP-XXX (number of project application)-XXXX (year of issue) which is maintained in a separate database and is not included in Table 1.

In FY 2018, a total of 47 numbered exemptions for specific activities were issued; 39 new and eight (8) revisions. The numbered exemptions issued included 39 exemptions that proposed no woodland impacts and eight (8) exemptions that proposed clearing totaling 50,253 square feet or 1.15 acres of woodland (Attachment 2, Table 1).

In FY 2018, a total of 23 numbered exemptions for Clean Water Partnership projects were issued which included 55,815 square feet (1.28 acres) of additional clearing of woodland.

Type 1 Tree Conservation Plans (TCPI or TCPI)

Type 1 Tree Conservation Plans (TCP1s) are conceptual in nature and are prepared and approved in conjunction with Conceptual Site Plans, Preliminary Plans of Subdivision, and Comprehensive Design Plans. With the adoption of the current WCO in 2010, the naming of TCP1s was changed from a Roman numeral (I) to an Arabic numeral (1). Grandfathered plans will continue to be referred to using the Roman numeral designation assigned at time of review and plans subject to the current regulations will use an Arabic numeral designation.

During FY 2018, a total of 20 Type 1 Tree Conservation Plan applications were submitted for review. Thirteen (13) of the TCP1 plans were new applications, and seven (7) were revisions to previous approvals.

During FY 2018, a total of sixteen (16) Type 1 Tree Conservation Plans were approved or reapproved; six (6) new and ten (10) revised. Only three (3) of the approved plans were received during the reporting period.

Type 2 Tree Conservation Plans (TCPII or TCP2)

Type 2 Tree Conservation Plans (TCP2s) are technical implementation plans that are reviewed and approved in conjunction with detailed site plans, specific design plans, special exceptions or prior to grading permit application. With the adoption of the current 2010 WCO the naming of TCP2s was changed from a Roman numeral (II) to an Arabic numeral (2). Grandfathered plans retain the Roman numeral designation assigned at the time of original approval, while plans that were approved after September 1, 2010 use an Arabic numeral designation.

Prince George's County maintains statistics on each Type 2 Tree Conservation Plan cumulatively. This means that the amount of existing woodlands is reported as that existing at the time of the first TCP2 plan submittal, and that clearing, retention, planting, off-site mitigation, and fee-in-lieu requirements are reported from the most current approval of the plan and represents cumulative development impacts to a site.

During FY 2018, a total of 80 Type 2 Tree Conservation Plan applications were received for review, including 52 plan revisions.

A total of 63 Type 2 Tree Conservation Plan applications were approved, including 40 plan revisions. This includes plans submitted in the prior reporting period. To eliminate double counting of plan statistics only the most current revision of the TCP2 plan approved during the reporting period is included in the reporting figures, which eliminated four (4) TCP2 plans which were approved more than once during the reporting period.

The gross tract acreage (total tract or project area before deductions) of the 63 unique TCP2 plans approved during the reporting period is 3,403.83 acres (Attachment 2, Table 2).

The net tract woodlands of the 63 unique projects reviewed in FY2018 totaled 1,930.89 acres or 63.83 percent of the total net tracts. The woodland clearing on the net tract of the 63 unique projects was 919.25 acres or 47.61 percent of the existing woodland on the net tracts (Attachment 2, Table 3).

The cumulative woodland conservation requirements for TCP2 plans approved or reappraised in FY 2018 are being satisfied by 601.58 acres of on-site preservation, 142.50 acres of on-site afforestation/reforestation, 199.36 acres of off-site woodland conservation credits, and 17.79 acres of fee-in-lieu payments totaling \$271,074.75. This includes government projects which were assessed at the state fee-in-lieu rate, and TCP2s with differing fee-in-lieu rates due to grandfathering (Attachment 2, Table 4).

Acreage placed in long-term protection on the gross tract by the approval or reappraisal of Type 2 Tree Conservation Plans in FY 2018 included 650.73 acres in forest retained, 146.52 acres of afforestation/reforestation, and 352.95 acres of woodland conservation provided off-site. This, in addition to forest that is retained but not counted as credit, as well as forested floodplain, totals 1,869.11 acres (Attachment 2, Table 5).

Bonding and Financial Guarantees

The Prince George's County Woodland and Wildlife Habitat Conservation Ordinance requires the collection of bonds prior to the issuance of grading permits for properties with approved TCP2 plans that require afforestation and/or reforestation on-site. Historically, the afforestation and reforestation bonding

rates were set at \$0.30 per square foot or \$13,068.00 per acre by the County's grading ordinance (Subtitle 4). An updated Water Quality Resources and Grading Code (Subtitle 32) was adopted and became effective September 6, 2011 (FY 2012). Section 32-135(j) no longer requires a set bonding rate but requires "... a cash deposit or bond ... to guarantee that all work will be completed in accordance with the approved plans and the provisions of this Division and Subtitle 25 (Woodland and Wildlife Habitat Conservation Ordinance)." The standard rate of \$0.30 per square foot is applied unless a modified rate is requested and justified.

Bonds collected for afforestation and reforestation under the previous Woodland Conservation Ordinance were held for a minimum of two years to ensure satisfactory installation and survival of tree plantings. Monies collected on sites approved under the Woodland and Wildlife Habitat Conservation Ordinance, effective September 1, 2010, are held for a minimum four-year maintenance period.

During FY 2018, the Department of Permitting, Inspections and Enforcement (DPIE) was notified by M-NCPPC staff of afforestation/reforestation bonding requirements during the review of the grading and/or building permit. There may be a time lag of several months or even years between notification and bond collection because the applicants typically do not post bonding until permit issuance is imminent.

Even if bonding notification has occurred, some permit applications are delayed or never move forward to issuance, so there are differences between bonding notifications forwarded to DPIE and bonds posted during any reporting year.

In FY 2018, the M-NCPPC Environmental Planning Section notified DPIE of six permit applications for which afforestation and/or reforestation bonding were required. The bonding notifications for the reporting period included 6.25 acres of afforestation/reforestation which required bonding totaling \$81,675.00 (Attachment 2, Table 6).

During the FY 2018 reporting period, DPIE reported that they collected 10 afforestation/reforestation bonds with a total value of \$354,580.80 (Attachment 4).

Payments to Woodland Conservation Fund

Monies placed in the Woodland Conservation Fund include fee-in-lieu payments for portions of a woodland conservation requirement that cannot be accomplished on-site and fines or penalties for violations of the Woodland Conservation Ordinance. Violations include clearing woodlands without a permit; or clearing woodlands otherwise identified as preservation, reforestation, or afforestation areas on approved Tree Conservation Plans.

The Woodland Conservation Fund is to be used to afforest areas throughout Prince George's County and support the purposes of local woodland conservation programs as allowed under the state Forest Conservation Act and local Woodland and Wildlife Habitat Conservation Ordinance.

The Department of Permitting, Inspections and Enforcement is notified by M-NCPPC staff of the fee-in-lieu requirements for specific development projects during the review of the grading and/or building permit. There may be a time lag of several months or even years between notification and the collection of fee-in-lieu because the applicants typically do not pay the fee-in-lieu until a permit application is ready for issuance.

There were nine permit applications reviewed by M-NCPPC during FY 2018 that required payment of a fee-in-lieu of woodland conservation. DPIE was notified by M-NCPPC of payments of

fees-in-lieu prior to permit issuance totaling \$40,972.82 (Attachment 2, Table 6).

DPIE reported fee-in-lieu payments to the Woodland Conservation Fund collected in FY 2018 totaling \$95,519.44 (Attachment 4).

No monies were collected for civil citations or woodland conservation violation penalty fees during the reporting period.

Off-site Woodland Conservation Banks Established and Debited During FY 2018

An off-site woodland conservation bank is created when existing forest or open land is set aside in preservation and/or afforestation over and above the on-site woodland conservation requirements for the subject property. Off-site woodland conservation banks are subject to an approved Tree Conservation Plan and further protected by a declaration of covenants recorded in the land records. These protected woodland conservation areas may then be used to satisfy the requirements of developing properties that have insufficient woodland conservation areas on-site to fulfill their site requirements.

Off-site woodland conservation banks provide off-site afforestation at a 1:1 ratio per acre of woodland conservation required. Off-site woodland conservation provided in preservation must provide the woodland conservation area at a ratio of two acres of preservation for each acre of off-site woodland conservation required (2:1). When woodland conservation is debited from a woodland conservation bank for a non-governmental project, an off-site woodland conservation acreage transfer certificate is recorded in the land records. When woodland conservation is debited from a woodland conservation bank established by governmental agencies, the Type 2 Tree Conservation Plan is considered a perpetual protection mechanism and an easement is not required but a public transfer certificate is executed.

Off-site woodland conservation requirements for a developing site must be satisfied prior to the issuance of a grading permit. For this report all off-site woodland conservation areas are considered as being in an off-site bank.

During FY 2018 two new off-site woodland conservation banks were created, which provided perpetual protection for 174.36 acres of net tract woodland preservation and 9.9 acres of net tract afforestation (Attachment 2, Table 7).

During FY 2018, a total of 49 woodland conservation transfer credit certificates were recorded in 23 off-site woodland conservation banks. Those transfer credit certificates included 159.86 acres of preservation and 28.73 acres of afforestation with a reported cost of \$1,935,642.00 (Attachment 2, Table 8).

During FY 2018, no off-site woodland conservation banks were inspected for compliance with the approved Type 2 Conservation Plan.

Retained and Planted Stream Buffers

Revisions to the Forest Conservation Act that were enacted during the 2009 Legislative Session require that local governments include in their annual reporting, information related to the preservation of existing stream buffers and the creation of new stream buffers through afforestation or reforestation. The FY 2010 report adopted a process to measure stream buffers based on the required GIS feature capture of woodland conservation areas that was instituted in FY 2009, which resulted in a more accurate measurement than the procedure previously followed. Stream buffer information is reported based on a stream buffer width of 50

feet from the center line or top of bank on both sides of regulated streams as determined by the Maryland Forest Service.

The reporting of retained and planted stream buffers has been deferred until the completion of the FY 2018 GIS feature capture. This information will be forwarded as an amendment to this report when the GIS feature capture is completed and analyzed.

Planning Department Expenses

The staff time associated with the Prince George's County Planning Department's implementation of the Woodland Conservation Ordinance includes the review of exemption requests, the review and approval of Tree Conservation Plans, oversight of woodland conservation banking, interagency coordination, planning studies, educational activities, and other related tasks.

The total staff time allocated during FY 2018 for the review of tree conservation plans, forest stand delineations (both as stand-alone documents and as part of natural resources inventories), exemption requests and the administration of the program was 73.6 staff weeks (2,994 hours) at an estimated labor cost of \$169,550, plus \$10,000 in supplies, materials, and other services, for a total program cost of \$179,550. During the reporting period, this time was generally split between five Planners, one Principal and one Senior Planning Technician, an intern, and the Section Supervisor. Other staff in the department also spent a limited amount of time on woodland conservation projects and their time is included in the total. Staff also spent time drafting updates to the Environmental Technical Manual, which includes the Woodland and Wildlife Habitat Conservation Technical Manual, reviewing proposed legislation, and responding to citizen inquires.

County Tree Planting Activities

The monies collected through the payment of fee-in-lieu and violation processes are used by the Sustainable Initiatives Division of the Department of the Environment (DoE) to afforest lands throughout Prince George's County and to cover other approved activities associated with local woodland conservation programs. Funds are carried over from year to year if not expended. These monies may be used directly by DoE for an afforestation project or, as is often the case, the monies are given as a grant to a community or municipality for tree planting.

The Tree ReLeaf Grant Program (Tree ReLEAF) is a countywide program that provides up to \$5,000 to civic, neighborhood, community and homeowner organizations, schools and libraries to plant native trees and shrubs in public or common areas. A municipality can receive up to \$10,000 for plantings. The program requires a 50/50 match and provides a hands-on opportunity for applicants to learn how to properly plant and care for trees and shrubs. Applicants are required to maintain the trees. A maintenance plan is required prior to approval of an application.

In the fall of 2015, DoE launched the Arbor Day Every Day Program (ADED). This program seeks to increase the number of native trees and shrubs planted in Prince George's County by partnering with County schools. Through the ADED Program, DoE educates students on the everyday importance of trees, empowers them to enhance their community and provides trees for planting projects. DoE works with schools to develop planting plans and post-planting maintenance plans.

The total Woodland Conservation Funds expended by DoE in FY 2018 was \$110,200 which was used for development of planting and maintenance plans, trainings, program administration, buying trees and materials as well as health assessment and long-term care.

Woodland Conservation Educational Activities

Presentations are given to various development groups and agencies to address procedures and processes used in the implementation of the Prince George's County Woodland Conservation Ordinance (WCO). This included an assortment of seminars, training sessions, and tours.

In FY 2018, staff from M-NCPPC Department of Planning spent approximately 600 hours educating governmental staff and the public about the Woodland and Wildlife Habitat Conservation Ordinance and the importance of woodland conservation. These efforts were mainly conducted by staff responding to citizen and development community inquiries about the ordinance.

In FY 2018 the Sustainability Division of the Department of the Environment spent approximately 1,800 hours educating citizens about the environmental value and importance of trees, the Tree ReLeaf Grant Program, the Tree City USA Certification and the Arbor Day Event.

Departments of the Environment and Permitting, Inspections and Enforcement Program Costs

Enforcement of the Woodland Conservation Ordinance in Prince George's County was conducted by the Department of Permitting, Inspections and Enforcement (DPIE) during FY 2018. The reporting figures to be provided include preconstruction site inspections, periodic site inspections, final inspections and actions regarding violations of the Woodland Conservation Ordinance. Because these activities are totally integrated, and inspections address all aspects of the Grading Ordinance, not just woodland conservation, when hours are provided, they are reasonable assumptions based on the total labor hours.

The total number of woodland conservation inspections performed by DPIE during FY 2018 was 10,184.

DPIE reported that the time spent by permit processors, bonding specialists, administrative assistants, supervisors, planners and engineers is estimated to be 150 hours with an approximate cost of \$3,375. The estimated time spent on inspections and enforcement by inspection staff is approximately 5,082 hours with an approximate cost, including staff and equipment, of \$230,000. The total program costs related to Woodland Conservation was reported as \$233,375 (Attachment 4).

DPIE reports issuing 10 woodland conservation violations in FY 2018; all warnings were satisfied and brought into compliance (Attachment 4).

ATTACHMENT 1

ATTACHMENT 1: PRINCE GEORGE'S COUNTY LOCAL FOREST CONSERVATION ACT ANNUAL REPORT FY 2018
 Prepared by: Environmental Planning Section, Countywide Planning Division, Prince George's County Planning Department, MNCPPC
 (March 2019) (Revised July 2019)

REPORTING CATEGORY	INFORMATION FOR FY 2018 REPORTING PERIOD (7/1/2017 to 6/30/2018)	STATE DEFINITION OR GUIDANCE	PRINCE GEORGE'S COUNTY DEFINITION/EQUIVALENT
Retained Forest -On-site -Off-site -Total Retained	On-site: 601.36 acres Off-site: 114.40 acres Total: 715.76 acres	Retained forest minus floodplain	Woodland preserved (retained) on net tract (gross tract minus 100-year floodplain) for TCP2 plans approved or reapproved during the reporting period, as shown on most current approval (Table 4) Woodland preserved (retained) to be provided in off-site banks for approved and reapproved TCP2 projects, as shown on most current approval (Table 8)
Planted Forest -On-site -Off-site -Total Planted	On-site: 142.50 acres Off-site: 17.85 acres Total: 160.35 acre	All forest planted for all projects	Afforestation/reforestation required for TCP2 plans approved or reapproved during reporting period, as shown on most current approval -On-site planting (net tract and 100-year floodplain) (Table 4) -Off-site planting provided in approved banks during reporting period (Table 8) -Total area of planted forest
Long Term Protection (LTP)	1,869.11 acres	Total amount of forest placed in LTP as a result of all projects, including 100-year floodplain	Total amount of woodland conservation placed in LIP for all TCP2 plans approved or reapproved during the reporting period, including wooded 100-year floodplain (Table 5)
Bond Amount Posted	\$590,982.76	Total amount of bond posted for all projects	Total amount of afforestation/reforestation bonding posted with County for grading permits issued during the reporting period (DPIE Report)
In-Lieu Fees Collected for FY18	Collected: \$ 95,519.44	In-lieu fees collected during reporting period (FY)	Total amount of in-lieu fees collected by the county Department of Permitting, Inspections and Permitting (DPIE) and placed in the Woodland Conservation Fund during the reporting period (DPIE Report)

ATTACHMENT 1: PRINCE GEORGE'S COUNTY LOCAL FOREST CONSERVATION ACT ANNUAL REPORT FY 2018
 Prepared by: Environmental Planning Section, Countywide Planning Division, Prince George's County Planning Department, MNCPPC
 (March 2019) (Revised July 2019)

REPORTING CATEGORY	INFORMATION FOR FY 2018 REPORTING PERIOD (7/1/2017 to 6/30/2018)	STATE DEFINITION OR GUIDANCE	PRINCE GEORGE'S COUNTY DEFINITION/EQUIVALENT
Jurisdiction	Prince George's County	Jurisdiction with local Forest Conservation Act Authority	Same
Total Reviews	366	Exemptions plus Project Reviews	Total Exemptions issued plus total Tree Conservation Plans reviewed (TCP1 and TCP2) but not necessarily approved during the reporting period (Table 1)
Exemptions	266 (196 standard, 47 numbered and 23 CWP)	Total Exemptions granted	Total of Standard Exemptions, Numbered Exemptions, and Exemptions issued for Clean Water Partnership Projects (CWP)
Projects Reviewed	100 (20 TCP1 and 80 TCP2)	Total regulated activities reviewed	Total number of TCP1 and TCP2 plans received, but not necessarily approved during the reporting period
Net Tract Area	3,403.83 acres	Net Tract Area under review	Gross Tract Area: entire site area (including 100-year floodplain) of TCP 2 plans approved or reapproved during the reporting period (Table 2)
Area of Floodplain -Unforested -Forested -Total	Unforested: 154.32 acres Forested: 228.48 acres Total: 382.80 acres	Total floodplain in all projects reviewed	Total area of forested and unforested 100-year floodplain on TCP2 plans approved or reapproved during the reporting period (Table 3)
Existing Forest	1,930.89 acres	Forest in "Net Tract" as defined by state, minus 100-year floodplain	Existing Forest on Net Tract as defined by Prince George's (Gross Tract minus 100-year floodplain) on TCP2 plans approved or reapproved during reporting period at time of first approval (Table 3)
Cleared Forest	943.01 acres	All forest cleared including floodplain	Total forest cleared on net tract, in 100-year floodplain; and off-site on TCP2 plans approved or reapproved during reporting period, cumulative from date of original approval (Table 3)

ATTACHMENT 1: PRINCE GEORGE'S COUNTY LOCAL FOREST CONSERVATION ACT ANNUAL REPORT FY 2018
 Prepared by: Environmental Planning Section, Countywide Planning Division, Prince George's County Planning Department, MNCPPC
 (March 2019) (Revised July 2019)

REPORTING CATEGORY	INFORMATION FOR FY 2018 REPORTING PERIOD (7/1/2017 to 6/30/2018)	STATE DEFINITION OR GUIDANCE	PRINCE GEORGE'S COUNTY DEFINITION/EQUIVALENT
In-Lieu Fees -Expended for FY18	Expended: \$110,200	In lieu fees expended during or report period (FY)	Total amount of in-lieu funds expended from the Woodland Conservation Fund during the reporting period (DoE Report)
Stream Buffers: Conserved for all projects -linear length -acreage	TBD	Length of perennial and intermittent (regulated) streams on-site Retained woodlands lying with 50-feet, measured from the top of each normal bank, of any perennial or intermittent (regulated) stream	Same, based on TCP2 plans approved or reapproved during the reporting period Same, based on TCP2 plans approved or reapproved during the reporting period
Stream Buffers Newly Established for all projects -linear length -acreage	TBD	Length of perennial and intermittent (regulated) streams on-site Newly established buffers, afforestation/ reforestation areas lying within 50 feet of any perennial or intermittent stream, measured from top of bank.	Same, based on TCP2 plans approved or reapproved during the reporting period Same, based on TCP2 plans approved or reapproved during the reporting period
Implementation Costs -by Agency Total Cost	M-NCPPC: \$179,550 DoE: \$106,700 DPIE: \$233,375 Total Cost: \$ 519,625	Annual cost of the program in dollars	Total of program costs for M-NCPPC, DoE and DPIE during the reporting period, not including expenditures from Woodland Conservation Fund
Labor Hours Spent -by Agency Total Hours	M-NCPPC: 2,994 hours DoE: 2,648 hours DPIE: 5,232 hours Total: 10,874 hours	Number of hours devoted to implementing program	Total of hours devoted to program implementation by MNCPPC, DoE and DPIE during the reporting period

ATTACHMENT 1: PRINCE GEORGE'S COUNTY LOCAL FOREST CONSERVATION ACT ANNUAL REPORT FY 2018
 Prepared by: Environmental Planning Section, Countywide Planning Division, Prince George's County Planning Department, MNCPPC
 (March 2019) (Revised July 2019)

REPORTING CATEGORY	INFORMATION FOR FY 2018 REPORTING PERIOD (7/1/2017 to 6/30/2018)	STATE DEFINITION OR GUIDANCE	PRINCE GEORGE'S COUNTY DEFINITION/EQUIVALENT
Forest Retention Banks (Existing Woodlands)	Created: 174.36 acres Debited: 114.40 acres	Existing forest (acres) placed or debited -New created -Debited	Area of off-site preserved woodland banks protected (created) and debited during the reporting period.
Forest Retention Banks (Planted)	Created: 9.90 acres Debited: 17.85 acres	Newly planted forest (acres) placed or debited: -Newly created -Debited	Area of off-site planted woodland banks created and debited during the reporting period.

ATTACHMENT 2

**Table 1: FY 2018 Annual FCA Report for Prince George's County
Numbered Exemptions for Specific Activities**

Ex Number/Year	Rev#	Project Name	Land Use	Date Reviewed	Watershed Number	X-Grid	Y-Grid	Woodland Cleared (sf)	WSSC Map
35 - 2017 -	0	10708 FORESTGATE PLACE	RES	7/10/2017		1363842	486643	1800	211NE09
37 - 2017 -	0	HANOVER PARKWAY SWM BMP	PUB	7/18/2017				0	210NE07
38 - 2017 -	0	8905 PRESIDENTIAL PKWY - PGPD POLICE PLAZA P	PUB	7/19/2017				0	206SE08
5 - 2016 -	1	2905 OLD LARGO ROAD	PUB	7/26/2017		1378296	430329	0	204SE12
39 - 2017 -	0	BOYD PARK STORMWATER RETROFIT	PUB	7/28/2017				0	203NE05
20 - 2004 -	1	16550 ANNAPOLIS ROAD CITY OF BOWIE SALT DOM	PUB	8/1/2017				0	210NE14
41 - 2017 -	0	3709 FORESTVILLE ROAD CONCRETE PLANT	IND	8/10/2017				0	205SE07
42 - 2017 -	0	3800 LOTTSFORD VISTA RD	RES	8/18/2017				0	205NE09
43 - 2017 -	0	16606 BEALLE HILL ROAD - SWIMMING POOL	RES	8/22/2017				0	222SW02
44 - 2017 -	0	MONTPELIER DR. GREEN/COMPLETE STREET IMPR	PUB	8/31/2017				0	217NE08
45 - 2017 -	0	CAMPUS DR. GREEN/COMPLETE STREET IMPROVE	PUB	9/5/2017				0	208NE05
46 - 2017 -	0	5401 TEMPLE HILL ROAD	RES	9/11/2017				0	208SE04
47 - 2017 -	0	BRAEMAR PROPERTY - md373 FRONTAGE IMPROVE	RES	9/18/2017				4360	220SE02
3 - 2000 -	1	MAY GROUND SOLAR PANELS	RES	9/19/2017				0	216SE14
22 - 2014 -	1	TURNER CROUND MOUNTED SOLAR PANELS	RES	9/19/2017				0	216SE14
48 - 2017 -	0	6421 OLD LANDOVER ROAD	COM	9/20/2017				0	204NE05
49 - 2017 -	0	WMATA SIDEWALK - ROUTE 1 AND ALBION ROAD, C	PUB	9/22/2017				8433	208NE04
51 - 2017 -	0	13901 OLD CHAPEL ROAD - INGROUND POOL	RES	10/4/2017	2131104			0	209NE12
36 - 2017 -	0	SAARC, 13601 MISSOURI AVENUE	IND	10/16/2017		1354012	376906	0	214SE07
40 - 2017 -	0	TALL OAKS VOCATIONAL SCHOOL	INST	10/22/2017				0	210NE11
50 - 2017 -	0	10401 GREENBELT RD	COM	10/25/2017				0	210NE09
52 - 2017 -	0	7436 LANHAM LANE	PUB	10/26/2017				0	210SE04

Ex Number/Year	Rev#	Project Name	Land Use	Date Reviewed	Watershed Number	X-Grid	Y-Grid	Woodland Cleared (sf)	WSSC Map
53 - 2017 -	0	13800 KELLER WAY	RES	10/27/2017				4999	218SE09
54 - 2017 -	0	CHERRYFIELD ROAD SWM POND RETROFIT	PUB	11/7/2017				0	209SE04
55 - 2017 -	0	LAKE GLEN DRIVE SWM RETROFIT (WINGATE)	PUB	11/8/2017				0	210NE10
56 - 2017 -	0	3447 DONNELL DRIVE SWM RETROFIT	PUB	11/27/2017				0	205SE06
57 - 2017 -	0	7509 MANDAN ROAD SWM RETROFIT	PUB	11/27/2017				0	210NE07
1 - 2018 -	0	MARIETTA WOODS SWM POND	PUB	1/16/2018				0	209NE09
2 - 2018 -	0	WHITEMARSH SEWER IMPROVEMENT	UTIL	1/17/2018				0	208NE14
3 - 2018 -	0	MONTPELIER WOODS SWM	PUB	2/23/2018				0	215NE09
4 - 2018 -	0	ADDISON ROAD AND WALKER MILL ROAD INTERSEC	PUB	2/27/2018				0	203SE06
5 - 2018 -	0	4525 BROWN STATION ROAD SWM	PUB	2/27/2018				4025	206SE12
6 - 2018 -	0	AVRAMOVIC PROPERTY--PGC 18 SOLAR SITE	UTIL	3/1/2018				0	210SE11
7 - 2018 -	0	17201 LIVINGSTON ROAD - AG POLE BARN	RES	3/7/2018				0	222SW02
76 - 2007 -	15	PRINCE GEORGE'S COMMUNITY COLLEGE CULINAR	PUB	3/7/2018				0	201SE-09
76 - 2007 -	16	PRINCE GEORGE'S COMMUNITY COLLEGE QUEEN A	PUB	3/7/2018				0	201SE09
8 - 2018 -	0	12302 VAN BRADY ROAD TIMBER HARVEST	HAR	3/15/2018				0	215SE11
9 - 2018 -	0	6000 SAUERWEIN WAY ROAD IMPROVEMENTS	PUB	3/16/2018				0	208SE09
10 - 2018 -	0	DOMINION ENERGY PIPELINES	UTIL	4/5/2018				0	VAR
11 - 2018 -	0	NORTH HURON SIDEWALK IMPROVEMENTS	PUB	5/9/2018				0	208SE01
12 - 2018 -	0	WASHINGTON GAS TIE IN	UTIL	5/9/2018				5000	207SE03
13 - 2018 -	0	11611 PROSPECT HILL SFD	RES	6/6/2018				0	210NE10
14 - 2018 -	0	10707 MARLBORO PIKE	INST	6/6/2018				0	204SE05
15 - 2018 -	0	3620 CHURCH ROAD MONOPOLE	UTIL	6/7/2018				4874	205NE12
16 - 2018 -	0	COLLEGE PARK WOODS CONNECTOR TRAIL	PUB	6/14/2018				16762	211NE04
17 - 2018 -	0	6601 CRAIN HIGHWAY SOLAR ARRAY	UTIL	6/19/2018				0	208SE11
18 - 2018 -	0	3215 POWDER MILL RD	INST	6/28/2018				0	213NE03

Ex Number/Year	Rev#	Project Name	Land Use	Date Reviewed	Watershed Number	X-Grid	Y-Grid	Woodland Cleared (sf)	WSSC Map
----------------	------	--------------	----------	---------------	------------------	--------	--------	-----------------------	----------

47 Numbered Exemptions Issued 50253 Square Feet of Woodland Clearing

Table 2: FY 2018 FCA Annual Report for Prince George's County
Type 2 Tree Conservation Plans Location and Acreage Report

TCP #	Project Name	Approval Date	Watershed Number	Maryland Grid East	Maryland Grid West	WSSC Map	Gross Tract (acres)	100+ Year Floodplain	Net Tract (acres)
2 - 34 - 2016 - 0	ALLENTOWN ANDREWS GATEWAY	7/10/2017	2140203	1339378	415062	208SE05	13.03	0	13.03
2 - 18 - 2017 - 0	MIDWOOD LANE SWM POND RETROFIT	7/13/2017	2131104	1386155	478129	209NE13	2.61	0	2.61
2 - 48 - 2004 - 4	VILLAGES OF PISCATAWAY - DANVILLE EST	7/17/2017	2140203	1328958	373124	217SE03	145.32	3.33	141.99
2 - 1 - 2017 - 0	RIVERSIDE AT WEST HYATTSVILLE METRO	7/20/2017	2131103	1320901	469837	207NE02	18.43	15.34	3.09
2 - 9 - 2017 - 0	TREEMAN, INC.	7/25/2017	2131103	1356295	412981	212SE10	11.62	7.05	4.57
2 - 19 - 2017 - 0	FRONCK'S ADDITION TO GLENN DALE	8/3/2017	2131103	1360326	484032	210NE09	3.88	0	3.88
2 - 97 - 2005 - 3	FRONTGATE FARMS, LOT 13	8/4/2017	2140203	1365026	391504	203SE12	22.3	0	22.31
2 - 29 - 1995 - 2	BLUE OCEAN/CEDAR POINTE	8/17/2017	2140203	1346049	445622	214SE07	22.22	5.09	17.13
2 - 5 - 2016 - 1	BROOKS DRIVE SOUTH	8/22/2017	2140204	1335801	435355	203SE05	11.04	0.22	10.82
2 - 9 - 2013 - 1	LIDL (BRANDYWINE)	8/22/2017	2140111	1347296	364808	221SE07	14.62	1.06	13.56
2 - 89 - 2000 - 2	FURGANG FARM, LOTS 33 & 34	8/25/2017	2140203	1365131	365833	214SE10	42.13	2.24	39.89
2 - 122 - 2003 - 5	WATERFORD COVE, LOTS 47 & 48	8/25/2017	2140203	1309383	378500	217SE01	132.21	9.71	116.6
2 - 4 - 2017 - 1	12005 CROOM ROAD PRESERVE (WC BANK)	8/28/2017	2131102	1381450	385965	215SE13	102.62	25.89	76.73
2 - 34 - 1998 - 2	D'ARCY PARK SOUTH	9/12/2017	2131103	1354242	488144	204SE08	56.19	2.11	54.08
2 - 1 - 2013 - 2	STRAWBERRY GLENN SOUTH, PARCELS 2 &	9/12/2017	2131103	1367307	474633	208NE10	9.96	2.2	7.76
2 - 21 - 2003 - 1	THE CHURCH OF THE LIVING GOD	9/25/2017	2140205	1316395	469887	207NE02	5.11	0	5.11
2 - 147 - 1991 - 6	PRINCE GEORGE'S COUNTY GUN RANGE	9/27/2017	2131103	1375711	405931	207SE11	160.22	0	160.22
2 - 122 - 1995 - 0	TOP GOLF AT POTOMAC BUSINESS PARK, L	10/2/2017	2140201	1313987	413297	209SE01	15.36	1.47	13.89
2 - 97 - 2005 - 4	FRONTGATE FARMS, LOT 2	10/5/2017	2140203	1365026	391504	203SE12	1.16	0	22.31
2 - 7 - 2017 - 0	HAMILTON PROPERTY	10/5/2017	2140203	1331152	373400	218SE04	41.88	0.39	41.49
2 - 159 - 2004 - 1	CAPITAL COURT PROPERTY	10/6/2017	2131103	1357589	446045	201NE08	35.23	0.21	35.02
2 - 97 - 2005 - 5	FRONTGATE FARMS, LOT 15	10/19/2017	2140203	1365026	391504	204SE12	0.69	0	0.69

TCP #	Project Name	Approval Date	Watershed Number	Maryland Grid East	Maryland Grid West	WSSC Map	Gross Tract (acres)	100-Year Floodplain	Net Tract (acres)
2- 17 - 1994 - 4	TROLLEY LANE, LOT 4	10/19/2017	2140205	1339230	503969	215NE05	39.4	12.7	26.7
2- 66 - 1994 - 2	PEPPERMILL VILLAGE COMMUNITY PARK	10/26/2017	2140205	1345282	448415	201NE06	11.36	0	11.36
2- 10 - 2012 - 3	PARKSIDE (FORMERLY SMITH HOME FARM)	11/6/2017	2131103	1356171	426315	205SE08	97.2	8.49	88.71
2- 35 - 2006 - 2	MONTPELIER HILLS	11/7/2017	2131104	1356517	530167	215NE08	32.34	0.13	32.21
2- 33 - 2017 - 0	RANDALL FARM - SOLAR ARRAY PROJECT	11/15/2017	2131103	1369859	425322	205SE10	8.08	0	8.08
2- 31 - 2017 - 0	K. NEAL PROPERTIES, LLC	11/16/2017	2140205	1332551	456156	203NE04	6.09	4.72	1.37
2- 34 - 2017 - 0	13119 MARTIN ROAD - WC BANK	11/21/2017	2131101	1378352	371261	219SE12	84.83	11.58	73.25
2- 37 - 1993 - 5	SIMMONS ACRES LOT 3, BL. J	11/29/2017	2140111	1304346	454096	223SW01	0.35	0	0.35
2- 144 - 2005 - 2	KING GALLAHAN	12/13/2017	2140203	1327890	452556	215SE04	28.88	0	28.88
2- 61 - 2005 - 6	WASHINGTON OVERLOOK	12/26/2017	2140201	1322751	398422	212SE02	102.4	5.33	97.07
2- 36 - 2006 - 2	MCKEE PROPERTY	1/10/2018	2131102	1377280	506599	217SE12	121.14	10.05	111.09
2- 40 - 2017 - 0	PROPERTY OF AGHYANI MINOO, PARCEL 16	1/17/2018	2131103			204SE06	1.04	0	1.04
2- 22 - 2017 - 0	13500 MOLLY BERRY ROAD, LOT 16	1/23/2018	2131101	1379754	377876	207SE12	5.3	0	5.3
2- 25 - 2017 - 0	MARRIOTT HOTELS @ BOWIE-MELFORD	1/26/2018	2131104	1394101	471908	207NE15	10.05	0	10.05
2- 59 - 2005 - 2	GARRETT'S CHANCE	2/5/2018	2131101	1387768	333954	228SE13,1	112.9	17.41	95.49
2- 2 - 2018 - 0	SUITLAND ROAD OUTFALL STABILIZATION	2/15/2018	2140201			205SE05	1.52	0	1.52
2- 38 - 2017 - 0	TRAFALGAR COURT OUTFALL STABILIZATION	2/15/2018	2140203			214SE02	0.67	0	0.67
2- 143 - 2003 - 2	EAST MARLTON, Sections 18,19,20, 221 AND 2	2/17/2018	2131102	1375922	402629	212SE12	186.69	14.38	172.51
2- 20 - 2013 - 2	PARKSIDE (FORMERLY SMITH HOME FARM),	2/21/2018	2131103	1358515	423597	206SE09	66.37	12.83	53.54
2- 68 - 1993 - 2	TIMOTHY BRANCH	2/21/2018	2131102	1383820	451284	218SE08	334.26	51.27	282.99
2- 133 - 1991 - 13	MATAPEAKE PARCELS 8 & 9 (BRANDYWINE 3	3/1/2018	2140111	1349039	471519	220SE07	182.35	18.68	163.67
2- 33 - 2016 - 1	LANDS OF ANDERSON COMPANY, LLC PARC	3/8/2018	2140111	1332343	360648	221SE04	382.66	116.52	266.14
2- 122 - 2003 - 6	WATERFORD COVE, LOT 10	3/9/2018	2140203	1309383	378500	217SE01	0.92	0	0.92
2- 29 - 2009 - 1	WALKER MILL STORAGE YARD	3/19/2018	2140205	1339470	436591	203SE05	4.64	0	4.64
2- 89 - 2000 - 3	FURGANG FARM, LOT 42	3/23/2018	2140203	1365131	365833	214SE10	42.13	2.24	39.89

TCP #	Project Name	Approval Date	Watershed Number	Maryland Grid East West	WSSC Map	Gross Tract (acres)	100- Year Floodplain	Net Tract (acres)
2- 81 - 1993 - 2	SANDY HILL CREATIVE DISPOSAL, PARK	4/16/2018	2131104	1373252 491318	212NE11	85.59	0	85.59
2- 35 - 2017 - 0	WINSTON PROPERTY	4/19/2018	2131103	413963	208SE13	2	0	2
2- 17 - 2017 - 0	NARANJIT ESTATES, LOT 3	4/20/2018	2140205	1340418 438709	202SE06	4.55	0.06	4.49
2- 93 - 1998 - 2	PYLES PROPERTY	4/25/2018	2140201	1327387 528660	207SE03	13.13	0	13.13
2- 37 - 2017 - 0	WOODMORE OVERLOOK	5/17/2018	2131103	1357455 454692	203NE09	46.25	0.04	46.21
2- 11 - 2016 - 1	MAGRUDER WEST	5/24/2018	2131103	1369026 400329	212SE10	40.8	0.77	40.03
2- 26 - 2012 - 2	BEECH TREE, SOUTH VILLAGE, SECTIONS 4	6/1/2018	2131103	1386662 426626	204SE 13	41.32	0.65	40.67
2- 39 - 2001 - 3	SIGNATURE CLUB AT MANNING VILLAGE	6/1/2018	2140111	1308129 485469	221SW01	70.49	5.96	64.33
2- 30 - 2017 - 0	WASHINGTON OVERLOOK DRIVE, LOT 2	6/1/2018	2140203	1322751 398422	212SE03	1.94	0	1.94
2- 16 - 2017 - 0	EMPIRE PETROLEUM - BRANDYWINE	6/4/2018	2140111	1349112 373400	218SE07	2.57	0	2.57
2- 8 - 2018 - 0	BERNICE LANE - POTOMAC WC BANK	6/5/2018	2140102	1297901 357389	223SW03	122.4	5.49	116.91
2- 23 - 1993 - 3	TREEVIEW ESTATES, PHASE II (LOT 37A)	6/7/2018	2140203	1311356 494109	220SE01	0.49	0	0.49
2- 10 - 2018 - 0	JAIN TEMPLE	6/11/2018	2140505	1335422 504776	215NE05	5.79	0	5.79
2- 12 - 2018 - 0	GRACE UNITED METHODIST CHURCH	6/22/2018	2140203	1319058 386398	215SE02	12.45	0	12.45
2- 38 - 2000 - 12	NATIONAL HARBOR	6/28/2018	2140201	1309294 406183	210SW01	117.62	0	117.62
2- 163 - 1992 - 7	HORIZON HILLS ESTATES	6/29/2018	2140203	1315175 399311	220SE01	105.04	7.19	86.63
Total Unique TCP2 Plans Reviewed::						3403.83	382.8	3025.07

**Table 3: FY 2018 FCA Annual Report for Prince George's County
Woodland Conservation Requirement for Type 2 Tree Conservation Plans**

TCP #	Project Nam	Approval Date	NT Area (acres)	Zone(s)	WC %	Ex NT Forest (acres)	Ex FP Forest (acres)	NT Cleared (acres)	FP Cleared (acres)	Total Cleared (acres)	Off-site Clear (acres)	WC Req (acres)
2 - 34 - 2016 - 0	ALLENTOWN ANDREWS GATEWAY	7/10/2017	13.03	M-X-T	15	9.12	0	8.3	0	8.3	0	1.95
2 - 18 - 2017 - 0	MIDWOOD LANE SWM POND RETROFIT	7/13/2017	2.61	R-80	20	1.31	0	1.31	0	1.31	0	52
2 - 48 - 2004 - 4	VILLAGES OF PISCATAWAY - DANVILLE ESTA	7/17/2017	141.99	R-L	20	141.26	3.33	61.58	0.17	61.75	0.71	28.4
2 - 1 - 2017 - 0	RIVERSIDE AT WEST HYATTSVILLE METRO	7/20/2017	3.09	M-X-T	15	0	0.42	0	0.42	0	0	0.46
2 - 9 - 2017 - 0	TREEMAN, INC.	7/25/2017	4.57	I-4	15	2.08	0.21	0	0	0	0	0.69
2 - 19 - 2017 - 0	FRONCK'S ADDITION TO GLENN DALE	8/3/2017	3.88	R-R	20	2.48	0	2.48	0	2.48	0	0.78
2 - 97 - 2005 - 3	FRONTGATE FARMS, LOT 13	8/4/2017	22.31	R-E	25	5.58	0	1.74	0	1.74	0	5.58
2 - 29 - 1995 - 2	BLUE OCEAN/CEDAR POINTE	8/17/2017	17.13	R-T/CSC	20	4.79	4.71	2.46	0.4	2.86	0	3.43
2 - 5 - 2016 - 1	BROOKS DRIVE SOUTH	8/22/2017	10.82	R-10	20	10.82	0.22	9.57	0.01	9.58	0.03	2.16
2 - 9 - 2013 - 1	LIDL (BRANDYWINE)	8/22/2017	13.56	C-M	15	3.89	0.89	2.1	1.04	3.14	0.07	2.03
2 - 89 - 2000 - 2	FURGANG FARM, LOTS 33 & 34	8/25/2017	39.89	R-R O-S	20.23	13.07	2.24	8.68	1.54	10.22	0.35	8.07
2 - 122 - 2003 - 5	WATERFORD COVE, LOTS 47 & 48	8/25/2017	116.6	R-E	25	106.28	9.71	27.77	0	29.77	0.7	29.15
2 - 4 - 2017 - 1	12005 CROOM ROAD PRESERVE (WC BANK)	8/28/2017	76.73	O-S	0	75.93	25.89	0	0	0	0	0
2 - 34 - 1998 - 2	D'ARCY PARK SOUTH	9/12/2017	54.08	R-R	20	49.11	2.11	41.84	0.04	41.88	0.05	10.82
2 - 1 - 2013 - 2	STRAWBERRY GLENN SOUTH, PARCELS 2 &	9/12/2017	7.76	R-E	25	6.63	2.1	0	0	0	0	0.36
2 - 21 - 2003 - 1	THE CHURCH OF THE LIVING GOD	9/25/2017	5.11	R-55	20	2.98	0	1.17	0	1.17	0	1.02
2 - 147 - 1991 - 6	PRINCE GEORGE'S COUNTY GUN RANGE	9/27/2017	160.22	R-R	43.72	70.05	0	7.51	0	7.51	0	70.05
2 - 122 - 1995 - 0	TOP GOLF AT POTOMAC BUSINESS PARK, L	10/2/2017	13.89	I-3	15	0.86	1.21	0.61	0.06	0	0	2.08
2 - 97 - 2005 - 4	FRONTGATE FARMS, LOT 2	10/5/2017	22.31	R-E	47.41	0.55	0	0.55	0	0.55	0	0.55
2 - 7 - 2017 - 0	HAMILTON PROPERTY	10/5/2017	41.49	R-A	50	41.49	0.21	1.53	0	1.53	0	20.75
2 - 159 - 2004 - 1	CAPITAL COURT PROPERTY	10/6/2017	35.02	C-0	15	12.47	0.18	9.49	0	9.49	0	5.25
2 - 17 - 1994 - 4	TROLLEY LANE, LOT 4	10/19/2017	26.7	E-I-A	15	9.6	10.86	6.13	0.72	6.85	0	4.01

TCP #	Project Nam	Approval Date	NT Area (acres)	Zone(s)	WC %	Ex NT Forest (acres)	Ex FP Forest (acres)	NT Cleared (acres)	FP Cleared (acres)	Total Cleared (acres)	Off-site Clear (acres)	WC Req (acres)
2 - 97 - 2005 - 5	FRONTGATE FARMS, LOT 15	10/19/2017	0.69	R-E	26.09	0	0	0	0	0	0	0.18
2 - 66 - 1994 - 2	PEPPERMILL VILLAGE COMMUNITY PARK	10/26/2017	11.36	R-80	5.37	0.61	0	0.64	0	0.64	0	0.61
2 - 10 - 2012 - 3	PARKSIDE (FORMERLY SMITH HOME FARM)	11/6/2017	88.71	R-M	46	52.51	3.52	43.34	0.19	43.53	0	41.25
2 - 35 - 2006 - 2	MONTPELIER HILLS	11/7/2017	32.21	R-U	20	21.93	0.01	18.21	0	18.21	0	6.44
2 - 33 - 2017 - 0	RANDALL FARM - SOLAR ARRAY PROJECT	11/15/2017	8.08	R-O-S/R-E	50	1.07	0	1.07	0	1.07	0	4.04
2 - 31 - 2017 - 0	K. NEAL PROPERTIES, LLC	11/16/2017	1.37	I-2	15	0.12	0.75	0.12	0.75	0.87	0	0.21
2 - 34 - 2017 - 0	13119 MARTIN ROAD - WC BANK	11/21/2017	73.25	O-S	0	57.99	0.65	0	0	0	0	0
2 - 37 - 1993 - 5	SIMMONS ACRES LOT 3, BL. J	11/29/2017	0.35	R-R	31.43	0.05	0	0.16	0	0.05	0	0.11
2 - 144 - 2005 - 2	KING GALLAHAN	12/13/2017	28.88	R-E	25	6.35	0	2.69	0	2.69	0.49	7.22
2 - 61 - 2005 - 6	WASHINGTON OVERLOOK	12/26/2017	97.07	R-E	25	64.75	5.14	36.63	1	37.63	0.36	0
2 - 36 - 2006 - 2	MCKEE PROPERTY	1/10/2018	111.09	O-S	50	94.32	9.8	31.61	0	31.61	0	55.55
2 - 40 - 2017 - 0	PROPERTY OF AGHYANI MINOO, PARCEL 16	1/17/2018	1.04	C-S-C	15	0.6	0	0.6	0	0.6	0	0.16
2 - 22 - 2017 - 0	13500 MOLLY BERRY ROAD, LOT 16	1/23/2018	5.3	O-S	50	4.5	0	1.05	0	1.05	0	2.65
2 - 25 - 2017 - 0	MARRIOTT HOTELS @ BOWIE-MELFORD	1/26/2018	10.05	M-X-T	12.34	2.52	0	1.65	0	1.65	0	1.24
2 - 59 - 2005 - 2	GARRETT'S CHANCE	2/5/2018	95.49	O-S	50	53.76	17.41	11.13	0	11.13	0	47.75
2 - 38 - 2017 - 0	TRAFALGAR COURT OUTFALL STABILIZATIO	2/15/2018	0.67	R-O-S	100	0.53	0	0.53	0	0.53	0.11	0.53
2 - 2 - 2018 - 0	SUITLAND ROAD OUTFALL STABILIZATION	2/15/2018	1.52	R-T	100	1.24	0	1.24	0	1.24	0	1.24
2 - 143 - 2003 - 2	EAST MARLTON, Sections 18,19,20, 221 AND 2	2/17/2018	172.51	R-R	20	172.51	14.38	108.54	5.48	114.02	2.28	34.5
2 - 20 - 2013 - 2	PARKSIDE (FORMERLY SMITH HOME FARM),	2/21/2018	53.54	R-M, L-A-C	66.42	4.67	3.63	1.8	1.05	2.85	0.18	35.56
2 - 68 - 1993 - 2	TIMOTHY BRANCH	2/21/2018	282.99	R-M, L-A-C	19	175.35	28.69	137.95	1	138.95	0	53.77
2 - 133 - 1991 - 13	MATAPEAKE PARCELS 8 & 9 (BRANDYWINE 3	3/1/2018	163.67	I-1	15	36.54	8.67	19.02	0.05	19.07	1.25	24.55
2 - 33 - 2016 - 1	LANDS OF ANDERSON COMPANY, LLC PARC	3/8/2018	266.14	R-A	50	76.02	54.14	9.82	0	9.82	0	133.07
2 - 122 - 2003 - 6	WATERFORD COVE, LOT 10	3/9/2018	0.92	R-E	25	0.92	0	0.82	0	0.82	0	0.23
2 - 29 - 2009 - 1	WALKER MILL STORAGE YARD	3/19/2018	4.64	C-M	15	3.74	0	2.8	0	2.8	0	0.7
2 - 89 - 2000 - 3	FURGANG FARM, LOT 42	3/23/2018	39.89	R-R O-S	20.23	13.07	2.24	8.68	1.54	10.22	0.35	8.07

TCP #	Project Nam	Approval Date	NT Area (acres)	Zone(s)	WC %	Ex NT Forest (acres)	Ex FP Forest (acres)	NT Cleared (acres)	FP Cleared (acres)	Total Cleared (acres)	Off-site Clear (acres)	WC Req (acres)
2 - 81 - 1993 - 2	SANDY HILL CREATIVE DISPOSAL, PARK	4/16/2018	85.59	PUBLIC	40.79	13.14	0	7.4	0	7.4	0	13.14
2 - 35 - 2017 - 0	WINSTON PROPERTY	4/19/2018	2	R-A	50	1.41	0	0.93	0	0.93	0.05	1.67
2 - 17 - 2017 - 0	NARANJIT ESTATES, LOT 3	4/20/2018	4.49	I-1	15	4.03	0.06	2.6	0	2.06	0	0.67
2 - 93 - 1998 - 2	PYLES PROPERTY	4/25/2018	13.13	R-80 / I-4	20	8.7	0	5.59	0	5.59	0.39	2.63
2 - 37 - 2017 - 0	WOODMORE OVERLOOK	5/17/2018	46.21	M-X-T	15	33.87	0.04	12.7	0	12.7	0	6.93
2 - 11 - 2016 - 1	MAGRUDER WEST	5/24/2018	40.03	R-A	50	38.21	0.77	14.76	0	14.76	0	20.02
2 - 30 - 2017 - 0	WASHINGTON OVERLOOK DRIVE, LOT 2	6/1/2018	1.94	R-E	25	0.69	0	0	0	0	0	0.49
2 - 39 - 2001 - 3	SIGNATURE CLUB AT MANNING VILLAGE	6/1/2018	64.33	M-X-T	15	62.34	5.96	48.59	0.23	48.82	0.2	9.65
2 - 26 - 2012 - 2	BEECH TREE, SOUTH VILLAGE, SECTIONS 4	6/1/2018	40.67	R-S	30.66	38.06	0.65	28.42	0.24	28.66	0	12.47
2 - 16 - 2017 - 0	EMPIRE PETROLEUM - BRANDYWINE	6/4/2018	2.57	I-1	15	1.32	0	1.32	0	1.32	0	0.39
2 - 8 - 2018 - 0	BERNICE LANE - POTOMAC WC BANK	6/5/2018	116.91	R-A	0	117	5.49	0	0	0	0	0
2 - 23 - 1993 - 3	TREEVIEW ESTATES, PHASE II (LOT 37A)	6/7/2018	0.49	R-R	20	0.07	0	0.07	0	0.07	0	2.67
2 - 10 - 2018 - 0	JAIN TEMPLE	6/11/2018	5.79	R-80/R-R	20	2.35	0	2.35	0	2.35	0	1.16
2 - 12 - 2018 - 0	GRACE UNITED METHODIST CHURCH	6/22/2018	12.45	R-E	25	12.04	0	0.76	0	0.76	0	3.11
2 - 38 - 2000 - 12	NATIONAL HARBOR	6/28/2018	117.62	M-X-T	15	84.59	0	82.01	0	82.01	0	17.64
2 - 163 - 1992 - 7	HORIZON HILLS ESTATES	6/29/2018	86.63	R-R	20	97.05	2.19	76.83	0	76.83	0	17.33

Total: 63 Unique TCP2 Plans Reviewed

3025.07 1930.89 228.48 919.25 15.93 935.44 7.57 819.19

Table 4: FY 2018 FCA Annual Report for Prince George's County
Woodlands Conservation Fulfillment for Type 2 Tree Conservation Plans

TCP 2 #	Project Name	Forest Retain NT (acres)	Refor/ Affor NT (acres)	Off-site WC (acres)	Fee-in-lieu Area (acres)	Amount	WC Banking Provided NT (acres)	Total WC Provided NT (acres)
2- 34- 2016 - 0	ALLENTOWN ANDREWS GATEWAY	0.71	0	4.17	0	\$0.00	0	0.71
2- 18- 2017 - 0	MIDWOOD LANE SWM POND RETROFIT	0	0	1.31	0	\$0.00	0	0
2- 48- 2004 - 4	VILLAGES OF PISCATAWAY - DANVILLE ESTATES	28.92	0	0.26	0	\$0.00	26.72	28.92
2- 1- 2017 - 0	RIVERSIDE AT WEST HYATTSVILLE METRO	0	0	0	0	\$0.00	0	0
2- 9- 2017 - 0	TREEMAN, INC.	2.08	0	0	0	\$0.00	0	2.08
2- 19- 2017 - 0	FRONCK'S ADDITION TO GLENN DALE	0	0	0	0	\$0.00	0	0
2- 97- 2005 - 3	FRONTGATE FARMS, LOT 13	0	0.46	0	0.09	\$1,176.12	0	0.46
2- 29- 1995 - 2	BLUE OCEAN/CEDAR POINTE	2.01	3.24	0	0	\$0.00	0	3.25
2- 5- 2016 - 1	BROOKS DRIVE SOUTH	0.99	0	4.29	0	\$0.00	0	0.99
2- 9- 2013 - 1	LIDL (BRANDYWINE)	1.61	0.16	0.72	0	\$0.00	0	1.77
2- 122- 2003 - 5	WATERFORD COVE, LOTS 47 & 48	36.79	0	0	0	\$0.00	37.53	36.79
2- 89- 2000 - 2	FURGANG FARM, LOTS 33 & 34	3.93	2.98	7.98	0	\$0.00	0	6.91
2- 4- 2017 - 1	12005 CROOM ROAD PRESERVE (WC BANK)	0	0	0	0	\$0.00	70.89	0
2- 1- 2013 - 2	STRAWBERRY GLENN SOUTH, PARCELS 2 & 3	0.62	0	0	0	\$0.00	5.4	0.62
2- 34- 1998 - 2	D'ARCY PARK SOUTH	3.66	5.18	15.19	0	\$0.00	0	8.84
2- 21- 2003 - 1	THE CHURCH OF THE LIVING GOD	1.32	0	0	0	\$0.00	0	1.32
2- 147- 1991 - 6	PRINCE GEORGE'S COUNTY GUN RANGE	62.57	0	0	7.48	\$97,748.64	0	62.57
2- 122- 1995 - 0	TOP GOLF AT POTOMAC BUSINESS PARK, LOTS 6, 7, 8	0.25	0	2.5	0	\$0.00	0	0.25
2- 97- 2005 - 4	FRONTGATE FARMS, LOT 2	0	0	0	0.55	\$4,443.12	0	0
2- 7- 2017 - 0	HAMILTON PROPERTY	21.79	0	0	0	\$0.00	0	21.79
2- 159- 2004 - 1	CAPITAL COURT PROPERTY	1.46	0.49	6.92	0	\$0.00	0	1.95
2- 17- 1994 - 4	TROLLEY LANE, LOT 4	3.47	1.17	0	0	\$0.00	0	4.64

TOP 2 #	Project Name	Forest Retain NT (acres)	Refor/ Affor NT (acres)	Off-site WC (acres)	Fee-in-lieu Area (acres)	Fee-in-lieu Amount	WC Banking Provided NT (acres)	Total WC Provided NT (acres)
2- 81-	1993 - 2 SANDY HILL CREATIVE DISPOSAL, PARK	5.77	0.91	6.49	0	\$0.00	0	6.68
2- 35-	2017 - 0 WINSTON PROPERTY	0.48	0	1.19	0	\$0.00	0	0.48
2- 17-	2017 - 0 NARANJIT ESTATES, LOT 3	1.37	0	0	0	\$0.00	0	1.37
2- 93-	1998 - 2 PYLES PROPERTY	3.11	1.29	0	0.1	\$130.68	0	4.4
2- 37-	2017 - 0 WOODMORE OVERLOOK	21.14	0.1	0	0	\$0.00	0	21.25
2- 11-	2016 - 1 MAGRUDER WEST	18.85	1.53	3.33	0	\$0.00	0	20.38
2- 26-	2012 - 2 BEECH TREE, SOUTH VILLAGE, SECTIONS 4 & 5	9.07	3.4	0	0	\$0.00	0	12.47
2- 39-	2001 - 3 SIGNATURE CLUB AT MANNING VILLAGE	12.03	0	10.04	0.16	\$2,090.88	0	12.03
2- 30-	2017 - 0 WASHINGTON OVERLOOK DRIVE, LOT 2	0.26	0	0	0.23	\$10,820.30	0	0.26
2- 16-	2017 - 0 EMPIRE PETROLEUM - BRANDYWINE	0	0	0	1	\$39,204.00	0	0
2- 8-	2018 - 0 BERNICE LANE - POTOMAC WC BANK	0	0	0	0	\$0.00	117	0
2- 23-	1993 - 3 TREEVIEW ESTATES, PHASE II (LOT 37A)	0	0	0	0.07	\$914.76	0	0
2- 10-	2018 - 0 JAIN TEMPLE	0	0	2.61	0	\$0.00	0	0
2- 12-	2018 - 0 GRACE UNITED METHODIST CHURCH	3.3	0	0	0	\$0.00	0	3.3
2- 38-	2000 - 12 NATIONAL HARBOR	2.58	0.58	46.28	0	\$0.00	0	2.58
2- 163-	1992 - 7 HORIZON HILLS ESTATES	19.45	0	0	0	\$0.00	0	19.45
Totals UniqueTCP2 Plans Approved:		601.58	142.5	199.36	17.79	\$271,074.75	385.55	677.95

**Table 5: FY 2018 FCA Annual Report for Prince George's County
Forest in Long Term Protection on Type 2 Tree Conservation Plans**

TCP #	Project Name	Forest Retained NT (acres)	Forest Retained FP (acres)	Forest Retained GT (acres)	Aff/Ref Provided (acres)	Off-site Preser Provided (acres)	Off-site Aff/ Ref Provided (acres)	Long-term Protection Gross Tract (acres)
2- 34-	2016 - 0 ALLENTOWN ANDREWS GATEWAY	0.71	0	0.71	0	0	0	1.42
2- 18-	2017 - 0 MIDWOOD LANE SWM POND RETROFIT	0	0	0	0	0	0	0
2- 48-	2004 - 4 VILLAGES OF PISCATAWAY - DANVILLE ESTAT	28.92	3.16	32.08	0	25.68	1.04	90.88
2- 1-	2017 - 0 RIVERSIDE AT WEST HYATTSVILLE METRO	0	0	0	0	0	0	0
2- 9-	2017 - 0 FREEMAN, INC.	2.08	0	0	0	0	0	2.08
2- 19-	2017 - 0 FRONCK'S ADDITION TO GLENN DALE	0	0	0	0	0	0	0
2- 97-	2005 - 3 FRONTGATE FARMS, LOT 13	0	0	0	0.46	0	0	0.46
2- 29-	1995 - 2 BLUE OCEAN/CEDAR POINTE	2.01	4.68	6.69	3.24	0	0	16.62
2- 5-	2016 - 1 BROOKS DRIVE SOUTH	0.99	0	0.99	0	0	0	1.98
2- 9-	2013 - 1 LIDL (BRANDYWINE)	1.61	0	1.61	0.16	0	0	3.38
2- 89-	2000 - 2 FURGANG FARM, LOTS 33 & 34	3.93	0	3.93	2.98	0	0	10.84
2- 122-	2003 - 5 WATERFORD COVE, LOTS 47 & 48	36.79	9.71	46.5	0	37.53	0	130.53
2- 4-	2017 - 1 12005 CROOM ROAD PRESERVE (WC BANK)	0	0	0	0	70.89	0	70.89
2- 34-	1998 - 2 D'ARCY PARK SOUTH	3.66	2.07	5.73	5.18	0	0	16.64
2- 1-	2013 - 2 STRAWBERRY GLENN SOUTH, PARCELS 2 & 3	0.62	0	0.62	0	5.13	0.27	6.64
2- 21-	2003 - 1 THE CHURCH OF THE LIVING GOD	1.32	0	0	0	0	0	1.32
2- 147-	1991 - 6 PRINCE GEORGE'S COUNTY GUN RANGE	62.57	0	62.57	0	0	0	125.14
2- 122-	1995 - 0 TOP GOLF AT POTOMAC BUSINESS PARK, LOT	0.25	0	0.25	0	0	0	0.5
2- 97-	2005 - 4 FRONTGATE FARMS, LOT 2	0	0	0	0	0	0	0
2- 7-	2017 - 0 HAMILTON PROPERTY	21.79	0.21	22	0	0	0	44
2- 159-	2004 - 1 CAPITAL COURT PROPERTY	1.46	0	1.46	0.49	0	0	3.41

TCP #	Project Name	Forest Retained NT (acres)	Forest Retained FP (acres)	Forest Retained GT (acres)	Aff/Ref Provided (acres)	Off-site Preser Provided (acres)	Off-site Aff/ Ref Provided (acres)	Long-term Protection Gross Tract (acres)
2- 17-	1994 - 4 TROLLEY LANE, LOT 4	3.47	10.86	14.33	4.98	0	0	33.64
2- 97-	2005 - 5 FRONTGATE FARMS, LOT 15	0	0	0	0	0	0	0
2- 66-	1994 - 2 PEPPERMILL VILLAGE COMMUNITY PARK	0.52	0	0.52	0.09	0	0	1.13
2- 10-	2012 - 3 PARKSIDE (FORMERLY SMITH HOME FARM) SE	7.81	3.33	10.33	12.95	0	0	34.42
2- 35-	2006 - 2 MONTPELIER HILLS	3.31	0.01	3.32	0	0	0	6.64
2- 33-	2017 - 0 RANDALL FARM - SOLAR ARRAY PROJECT	0	0	0	0	0	0	0
2- 31-	2017 - 0 K. NEAL PROPERTIES, LLC	0	0	0	0	0	0	0
2- 34-	2017 - 0 13119 MARTIN ROAD - WC BANK	0	0	0	0	57.36	9.9	67.26
2- 37-	1993 - 5 SIMMONS ACRES LOT 3, BL. J	0	0	0	0	0	0	0
2- 144-	2005 - 2 KING GALLAHAN	3.18	0	3.18	4.32	0	0	10.68
2- 61-	2005 - 6 WASHINGTON OVERLOOK	24.78	0	24.78	9.49	0	0	59.05
2- 36-	2006 - 2 MCKEE PROPERTY	62	0	62	1.83	0	0	63.83
2- 40-	2017 - 0 PROPERTY OF AGHYANI MINOO, PARCEL 163	0	0	0	0	0	0	0
2- 22-	2017 - 0 13500 MOLLY BERRY ROAD, LOT 16	2.56	0	0	0	0	0	2.56
2- 25-	2017 - 0 MARRIOTT HOTELS @ BOWIE-MELFORD	0.87	0	0.87	0.69	0	0	2.43
2- 59-	2005 - 2 GARRETT'S CHANCE	42.07	0	42.07	12.4	0	0	96.54
2- 38-	2017 - 0 TRAFALGAR COURT OUTFALL STABILIZATION	0	0	0	0.42	0	0	42
2- 2-	2018 - 0 SUITLAND ROAD OUTFALL STABILIZATION	0	0	0	0.86	0	0	0.86
2- 143-	2003 - 2 EAST MARLTON, Sections 18,19,20, 221 AND 22	63.97	8.9	0	5.52	0	0	78.39
2- 20-	2013 - 2 PARKSIDE (FORMERLY SMITH HOME FARM), S	2.82	0	2.82	7.94	0	0	13.58
2- 68-	1993 - 2 TIMOTHY BRANCH	34.04	27.69	61.73	38.92	0.14	1.59	164.11
2- 133-	1991 - 13 MATAPEAKE PARCELS 8 & 9 (BRANDYWINE 30	16.14	8.62	16.14	0	0	0	40.9
2- 33-	2016 - 1 LANDS OF ANDERSON COMPANY, LLC PARCEL	62.95	54.14	117.09	22.89	0	26.42	283.49
2- 122-	2003 - 6 WATERFORD COVE, LOT 10	0.1	0	0.1	0	0	0	0.2

TCP #	Project Name	Forest Retained NT (acres)	Forest Retained FP (acres)	Forest Retained GT (acres)	Aff/Ref GT Provided (acres)	Off-site Preser Provided (acres)	Off-site Aff/ Ref Provided (acres)	Long-term Protection Gross Tract (acres)
2- 29-	2009 - 1 WALKER MILL STORAGE YARD	0.94	0	0.94	0	0	0	1.88
2- 89-	2000 - 3 FURGANG FARM, LOT 42	3.93	0	0	2.69	0	0	6.62
2- 81-	1993 - 2 SANDY HILL CREATIVE DISPOSAL, PARK	5.77	0	5.77	0.91	0	0	12.45
2- 35-	2017 - 0 WINSTON PROPERTY	0.48	0	0.48	0	0	0	0.48
2- 17-	2017 - 0 NARANJIT ESTATES, LOT 3	1.37	0	1.37	0	0	0	2.74
2- 93-	1998 - 2 PYLES PROPERTY	3.11	0	3.11	1.29	0	0	4.4
2- 37-	2017 - 0 WOODMORE OVERLOOK	21.14	0.04	21.18	0.1	0	0	42.46
2- 11-	2016 - 1 MAGRUDER WEST	18.85	0	18.85	1.53	0	0	39.23
2- 30-	2017 - 0 WASHINGTON OVERLOOK DRIVE, LOT 2	0.26	0	0.26	0	0	0	0.52
2- 39-	2001 - 3 SIGNATURE CLUB AT MANNING VILLAGE	12.03	5.73	17.76	0	0	0	35.52
2- 26-	2012 - 2 BEECH TREE, SOUTH VILLAGE, SECTIONS 4 &	9.07	0	9.07	3.61	0	0	21.75
2- 16-	2017 - 0 EMPIRE PETROLEUM - BRANDYWINE	0	0	0	0	0	0	0
2- 8-	2018 - 0 BERNICE LANE - POTOMAC WC BANK	0	0	0	0	117	0	117
2- 23-	1993 - 3 TREEVIEW ESTATES, PHASE II (LOT 37A)	0	0	0	0	0	0	0
2- 10-	2018 - 0 JAIN TEMPLE	0	0	0	0	0	0	0
2- 12-	2018 - 0 GRACE UNITED METHODIST CHURCH	3.3	0	3.3	0	0	0	6.6
2- 38-	2000 - 12 NATIONAL HARBOR	2.58	0	2.58	0.58	0	0	5.74
2- 163-	1992 - 7 HORIZON HILLS ESTATES	19.45	2.19	21.64	0	0	0	43.28
Total Unique TCP2 Plans Approved: 63		601.58	141.34	650.73	146.52	313.73	39.22	1869.11

**Table 6: FY2018 FCA Annual Report for Prince George's County8
Afforestation/Reforestation Bonding and Fee-in-Lieu Notifications for Permitting**

Project Name	TCP 2 Number/ Rev #	Permit Number	Aff/ Ref (acres)	Bond Required (\$)	Acres	Fee-in-lieu Amount (\$)	Violation Amount (\$)	County Notified
SIERRA MEADOWS (Lot 9A Revision)	2- 102 - 1992 - 3	33752-2017-SP	0	\$0.00	0.07	\$914.76	\$0.00	7/6/2017
JSF LARGO	2- 23 - 1995 - 4	64632-2016-00-G	0	\$0.00	0.62	\$8,102.16	\$0.00	7/10/2017
TIMOTHY BRANCH, PHASE 1	2- 68 - 1993 - 1	38276-2015	1.29	\$16,857.72	0	\$0.00	\$0.00	7/14/2017
GREENBELT STATION	2- 147 - 2004 - 4	29626-2016-G	2.88	\$37,635.84	0	\$0.00	\$0.00	9/19/2017
FRONTGATE FARMS LOT 15	2- 97 - 2005 - 5	49155-2017-SP	0	\$0.00	0.18	\$2,352.24	\$0.00	10/2/2017
FRONTGATE FARMS LOT 2	2- 97 - 2005 - 4	46891-2017-SP	0	\$0.00	0.21	\$2,744.28	\$0.00	10/2/2017
RANDALL FARM	2- 33 - 2017 - 0	46806-2017-CG	0	\$0.00	1.07	\$17,058.97	\$0.00	11/15/2017
CAPITAL COURT	2- 159 - 2004 - 1	40343-2017-G	0.95	\$12,414.60	0	\$0.00	\$0.00	11/28/2017
KING GALLAHAN	2- 144 - 2005 - 2	42084-2017-SGU	0	\$0.00	0.02	\$261.36	\$0.00	12/13/2017
3700 DONNELL DRIVE	2- 60 - 2005 - 1	53117-2017-00-G	0.23	\$3,005.64	0	\$0.00	\$0.00	12/27/2017
A NEW LIFE CHURCH OF CHRIST	2- 62 - 2005 - 1	21639-2015-G	0.21	\$2,744.28	0	\$0.00	\$0.00	5/4/2018
UMSTC MARRIOTT HOTEL AT BOWIE-MELFORD	2- 23 - 2017 - 0	10503-2018-0	0.69	\$9,016.92	0.42	\$5,488.56	\$0.00	5/10/2018
BROCK HILLS, LOT 19, BLOCK K	2- 39 - 1990 - 7	18540-2016-G	0	\$0.00	0.24	\$3,136.32	\$0.00	6/5/2018
TREEVIEW ESTATES, LOT 37	2- 23 - 1993 - 1	8163-2018	0	\$0.00	0.07	\$914.17	\$0.00	6/11/2018
Total Bonding and Fee-in-Lieu Notifications:			6.25	\$81,675.00	2.9	\$40,972.82	\$0.00	

**Table 8 FY2018 FCA Annual Report for Prince George's County
Off-site Woodland Conservation Bank Acreage Debited**

Benefiting Property TCP2#	Name of Benefiting Property	Off-Site WC Bank TCP2#	Name of Off-Site Woodland Conservation Bank	Preservation Provided (acres)	Afforestation Provided (acres)	Liber / Folio	Cost of Easement	Approval Date
2-036-2016	New Carrollton (Garden City)	2-019-10	Brooks Church WC Bank	4.44	0	L39610 F557	\$44,000.00	7/3/2017
2-012-2017	Parcel 44, 5111 Auth Way	2-035-01	Dove's Perch WC Bank	3.02	0	L39424 F491	\$36,240.00	7/13/2017
2-189-03	St. John's Wood	2-013-94	Panorama WC Bank	0	1.97	L37507 F306	\$43,340.00	7/14/2017
2-027-04	Canterbury Tree Bank	2-018-08	Alice Hyllon Property WC Bank	0	1.04	L39411 F474	\$20,800.00	8/10/2017
2-026-2015	Arena Drive North/Sandpiper	2-011-14	Grimes Property WC Bank	4.18	0	L39536 F334	\$31,350.00	8/11/2017
2-005-2016	Brooks Drive South	2-130-03	Richardson Tract	0	1	L39906 F434	\$18,000.00	8/23/2017
2-019-2017	Fronk's Addition to Glenn Dale	2-013-94	Panorama WC Bank	0	1.98	L39920 F425	\$29,700.00	8/30/2017
FCP#015-07	Mattawoman Energy LLC	2-016-2016	Mattawoman, Parcel 111	2.19	0	L39333 F81	\$1.00	9/6/2017
2-001-2017	Riverfront at West Hyattsville	2-218-92	Tower Preserve	1.76	0	L40015 F196	\$19,360.00	9/14/2017
2-063-08-01	Inglewood Business Community	2-007-14	Westphalia of MD WC Bank	0	1.9	L39432 F114	\$32,300.00	9/14/2017
2-025-2016-	Navy FCU City of Capitals	2-019-10	Brooks Church WC Bank	1.12	0	L40070 F572	\$12,300.00	9/29/2017
2-154-04-01	Capital Court, Parcel B	2-218-92	Tower Preserve	5.51	0	L40031 F312	\$60,610.00	10/4/2017
FCP-S1509	Mattawoman Energy Project	2-109-06	13811 Springfield Road WC Bank (FP)	5.92	4.04	L38620 F317	\$140,000.00	10/4/2017
2-159-04-01	Capital Court, Parcel A	2-109-06	13811 Springfield Road WC Bank	8.33	0	L40081 F514	\$91,630.00	10/4/2017
TCP2-122-9	Potomac Business Park	2-017-13	AAA Service (Tioga Road) WC Bank	5	0	L40119 F377	\$54,875.00	10/16/2017
2-031-97-02	Springdale Estates	2-004-11	Walter Meinhardt Sr. WC Bank	6.82	0	L38904 .230	\$50,000.00	11/1/2017
2-014-15	Prince George's Hospital	2-002-13	6900 Crain Highway WC Bank	1.88	0	L40079 F083	\$18,800.00	11/2/2017
2-014-2015	Prince George's Hospital	2-019-10	Brooks Church WC Bank	13.2	0	L40070 F080	\$132,000.00	11/2/2017
2-015-014	Surratt North Property	2-098-05	Brown Preserve WC Bank	0	4.16	L40224 F584	\$79,040.00	11/9/2017
2-008-03	Cross Creek Club North Park	2-011-14	Grimes Property WC Bank	0.48	0	L40285 F270	\$3,600.00	12/11/2017
2-105-97	Konterra Business Campuse, Lot 4, Blo	2-011-14	Grimes Property WC Bank	2.84	0	L40285 F272	\$21,300.00	12/11/2017
2-144-05	King Gallaahan Subdivision	2-001-13	Strawberry Glen South WC Bank	2.35	0.27	L40329 F22	\$1.00	12/14/2017
2-144-05	King Gallaahan Subdivision	2-007-14	Westphalia of MD WC Bank	0	0.39	L40304 F113	\$4,175.00	12/14/2017
2-144-05	King Gallaahan Subdivision	2-013-94	Panorama WC Bank	0	0.17	L40304 F115	\$1,827.00	12/14/2017
2-034-98-01	D'Arcy Park South Project	2-175-06	Springfield Rd Potomac Preserve	11.5	0	L40369 F006	\$126,500.00	12/18/2017

Benefiting Property TCP2#	Name of Benefiting Property	Off-Site WC Bank TCP2#	Name of Off-Site Woodland Conservation Bank	Preservation		Afforestation Provided (acres)	Liber / Folio	Cost of Easement	Approval Date
				Provided (acres)	Provided (acres)				
C-P-16001	Tantallon on the Potomac, Lot 38	2-044-07	Preserve at Piscataway WC Bank	0	0.403	0	L40384 F417	\$14,000.00	12/22/2017
2-014-2015	Prince George's Hospital	2-011-14	Grimes Property WC Bank	0.16	0	0	L40353 F189	\$1,600.00	1/17/2018
2-011-2016	Magruder West	2-133-06	Marlton Parcel 115 WC Bank	3.47	0	0	L40398 F279	\$1.00	1/23/2018
2-011-2016	Magruder West	2-041-12	Walter Jr. and Clara Meinhardt WC Ba	3.19	0	0	L37357 F593	\$25,520.00	1/23/2018
2-034-2016	Andrews Allentown Gateway	2-099-06	Flynn-Newlin WC Bank	8.34	0	0	LF	\$79,230.00	2/1/2018
2-040-2017	7104 Marlboro Pike	2-010-11	Stephen Meinhardt Property	0.84	0	0	L40556 F252	\$6,160.00	2/8/2018
2-055-92-01	Villages at Morgan Metro Sportsplex Ad	2-175-06	Springfield Rd Potomac Preserve	1.1	0	0	LF	\$11,000.00	3/23/2018
2-031-2017	K.Neal Property, Parcel A	2-035-01	Dove's Perch WC Bank	2.16	0	0	L40710 F153	\$21,600.00	3/29/2018
2-068-97	Pietanza Woods II	2-006-11	Gregory Meinhardt WC Bank	8.6	0	0	L40784 F005	\$65,000.00	4/25/2018
2-039-2017	Holly Spring, Parcel A	2-010-11	Stephen Meinhardt Property	1.45	0	0	L40784 F009	\$10,585.00	4/25/2018
2-039-2017	Holly Springs, Parcel A	2-006-11	Gregory Meinhardt WC Bank	4.55	0	0	L40784 F007	\$30,995.00	4/25/2018
2-021-2018	Regency/Suiland Parkway Outfall Stabli	2-001-09	Brooke Lane WC Bank (DPW&T)	0	0.38	0	TCP2	\$1.00	6/22/2018
2-038-2017	Trafalgar Court Outfall Stabilization	2-001-09	Brooke Lane WC Bank (DPW&T)	0	0.15	0	TCP2	\$1.00	6/22/2018
2-010-2018	Jain Temple Complex	2-098-05	Brown Preserve WC Bank	0	2.61	0	L41176 F285	\$40,000.00	7/27/2018
2-122-1997-	FMC Fairmount Heights	2-053-09	Wesson WC Bank	0.64	0	0	L41178 F389	\$6,700.00	7/30/2018
2-011-2017	Riverfront Park and Overlook	2-011-14	Grimes Property WC Bank	7.02	0	0	L41115 F114	\$70,000.00	8/1/2018
2-003-2018	Thorn Property	2-011-14	Grimes Property WC Bank	0.1	0	0	L41200 F459	\$900.00	8/7/2018
2-094-96	Vista Gardens West	2-007-14	Westphalia of MD WC Bank	1.3	2.83	0	L40784 F3	\$52,200.00	9/18/2018
2-094-96	Vista Gardens West	2-007-14	Westphalia of MD WC Bank	0	5.44	0	L40784 F1	\$81,600.00	9/19/2018
2-016-2014-	Washington Business Park, Lot 31 & 3	2-011-14	Grimes Property WC Bank	1.52	0	0	L41338 F209	\$14,900.00	9/24/2018
2-010-12	Parkside (SHF) Section 2	2-035-01	Dove's Perch WC Bank	9.74	0	0	L41338 F203	\$97,400.00	9/24/2018
2-010-12	Parkside (SHF) Section 2	2-035-01	Dove's Perch WC Bank	9.74	0	0	L41338 F205	\$97,400.00	9/24/2018
2-019-13-02	Parkside (SHF), Section 6	2-035-01	Dove's Perch WC Bank	12.22	0	0	L41338 F207	\$122,200.00	9/24/2018
2-007-2018	7618 Marlboro Properties LLC	2-011-14	Grimes Property WC Bank	3.18	0	0	L41656 F415	\$14,900.00	9/24/2018

Total WC Banking Transfers Approved: 49 159.86 28.73 \$1,935,642.00

ATTACHMENT 3



THE PRINCE GEORGE'S COUNTY GOVERNMENT
Department of the Environment



January 3, 2019

Ms. Andree Green Checkley
Planning Director
Maryland-National Capital Park
and Planning Commission
Prince George's County Planning Department
14741 Governor Oden Bowie Drive
Upper Marlboro, Maryland 20772

Prince George's County Planning Department
Office of the Director

Rec'd 1/8/19 Log No D19-010801
Distribution ACC to CUP - Perlage

Dear Ms. Checkley:

This letter responds to your September 28, 2018 correspondence in which you requested assistance with preparation of the 2018 Woodland Conservation Ordinance Annual Report, which is to be submitted to the State of Maryland. According to your letter, staff of the Planning Department will prepare this report with assistance and information received from the staff of the Department of the Environment (DoE) and the Department of Permitting, Inspections and Enforcement (DPIE).

During Fiscal Year 2018, DoE performed activities related to tree planting projects for which the Woodland Conservation Funds were used. A summary of these activities is enclosed. This summary also includes an account of expended staff hours as related to tree planting projects.

We appreciate the opportunity to work with your staff on efforts to enhance the County's tree canopy and look forward to continued coordination on this effort. Should you need additional information, please feel free to contact me at (301) 883-5812.

Sincerely,

Joseph P. Gill
Acting Director

RECEIVED

JAN - 8 2019

MD. NAT'L. CAP. PK. & PL. COMM
PRINCE GEORGE'S COUNTY
PLANNING DIRECTOR'S OFFICE

Enclosure

cc: Major F. Riddick, Chief Administrative Officer
Office of the County executive
Michelle W. Russell, Acting Deputy Director, SSD, DoE
Dawn Hawkins-Nixon, Associate Director, SD, DoE
Muriel Logan, Budget Manager, SSD, DoE
Deborah Weller, Section Head, COPE, SD, DoE

1801 McCormick Drive, Largo, Maryland 20774

RECEIVED
JAN 03 2019
PRINCE GEORGE'S COUNTY PLANNING DEPT
COMMUNITY PLANNING DIV.

Fiscal Year 2018 (FY 18) WOODLAND CONSERVATION REPORT
Department of Environment (DoE) Summary

a. Balance of funds in the Woodland Conservation Fund as of the beginning and end of the fiscal year

DoE tracks program expenditures using SAP. A review of SAP reports shows the balance of funds in the Woodland Conservation Fund at \$1,544,692 and \$1,541,790 at the beginning and end of FY'18, respectively.

b. Use of Woodland Conservation Funds for tree planting projects.

The Prince George's County Department of The Environment (DoE) wants every community to enjoy the benefit of trees. To help communities "turn green" with trees we have used the Woodland Conservation Fund to support our Tree ReLEAF Grant (Tree ReLEAF), Arbor Day Every Day (ADED) and Tree Demonstration programs. In FY 18, a total of 250 trees were planted using approximately \$110,200 of funds from the Woodland Conservation Fund. The average expenditure of funds per tree was approximately \$441 per tree. Expenditures covered costs associated with activities which included, but were not limited to: development of planting and maintenance plans, trainings, program administration, buying trees and materials as well as health assessment and long-term care.

DoE secured the services of the Neighborhood Design Center (NDC) to perform design work for groups that apply for participation in DoE tree programs and are found to be eligible. Applicants may be afforded design assistance from NDC, at no expense to them, based on need. NDC works with each eligible applicant to select an ideal tree planting location, determine project priorities (e.g. shade, education, erosion control, support for wildlife etc.) and develop planting and maintenance plans which identify the number and location of each tree species.

Tree ReLEAF Grant Program

The Tree ReLEAF Grant Program (Tree ReLEAF) is a countywide program that provides up to \$5,000 to civic, neighborhood, community and homeowner organizations, schools and libraries to plant native trees and shrubs in public or common areas. A municipality can receive up to \$10,000 for plantings. The program requires a 50-percent match which in turn provides a hands-on opportunity for applicants to learn how to properly plant and care for trees and shrubs. Applicants are required to maintain the trees and a maintenance plan is required prior to approval of the application (Figure 1).

In FY 18, 102 trees were planted through Tree ReLEAF (Table 1). The money was used to plant trees in various locations on public or common ground. In addition, five (5) tree demonstrations were done resulting in 18 native trees being planted at a cost of approximately \$1,140 (Table 2).

Table 1: Tree ReLEAF Grant Program - Tree Plantings in Fiscal Year 2018

Planting Date	Organization	Number of Trees	\$ Amount
October 12, 2107	Cinnamon Ridge Condo	15	\$2,250
October 12, 2017	Number One of the Pines Condo Association	15	\$2,250
November 15, 2017	Lake Arbor Master HOA	20	\$2,450
December 1, 2017	Greenbrook HOA	25	\$3,750
April 27, 2018	Birchwood City/ Clearview Manor Recreation Center ¹	27	\$4,175
Total		102	\$14,875

Table 2: Tree Demonstrations Program - Tree Plantings in Fiscal Year 2018

Planting Date	Organization	Number of Trees	\$ Amount
April 11, 2018	Forestry Board Demo	2	\$90.94
April 18, 2018	St. Pious X Regional School	5	\$192.20
April 30, 2018	Greenbelt Tree Demo	6	\$187.29
May 20, 2018	Friendly High School	2	\$160.88
May 4, 2018	Robert Goddard Montessori School	3	\$511.00
Total		18	\$1,142.31

Arbor Day Every Day Program

In the fall of 2015, DoE launched the Arbor Day Every Day program (ADED). This program seeks to increase the number of native trees and shrubs planted in Prince George's County by partnering with County schools. ADED educates students on the everyday importance of trees, empowers them to enhance their community and provides trees for planting projects. DoE works with the schools to develop the planting plan and post-planting maintenance plan. DoE also coordinates with the Board of Education to ensure that projects are consistent with plans and projects in the Board's Capital Improvement Program and Facility Management Plan.

In FY 18, DoE worked with 11 schools to plant approximately 130 trees. Although a total of 130 trees were planted (Table 3) through ADED, 36 trees were purchased using Woodland Conservation funds were used to purchase 36 trees. The remaining 84 trees were planted in partnership with the Alliance for the Chesapeake Bay and did not use Woodland Conservation funds. In addition, to planting of trees, DoE assisted Bladensburg High School and New Hope to ensure long term survival by providing soil and mulch. Woodland Conservation funds in the amount of approximately \$3,830 were used for the ADED program in FY 18.

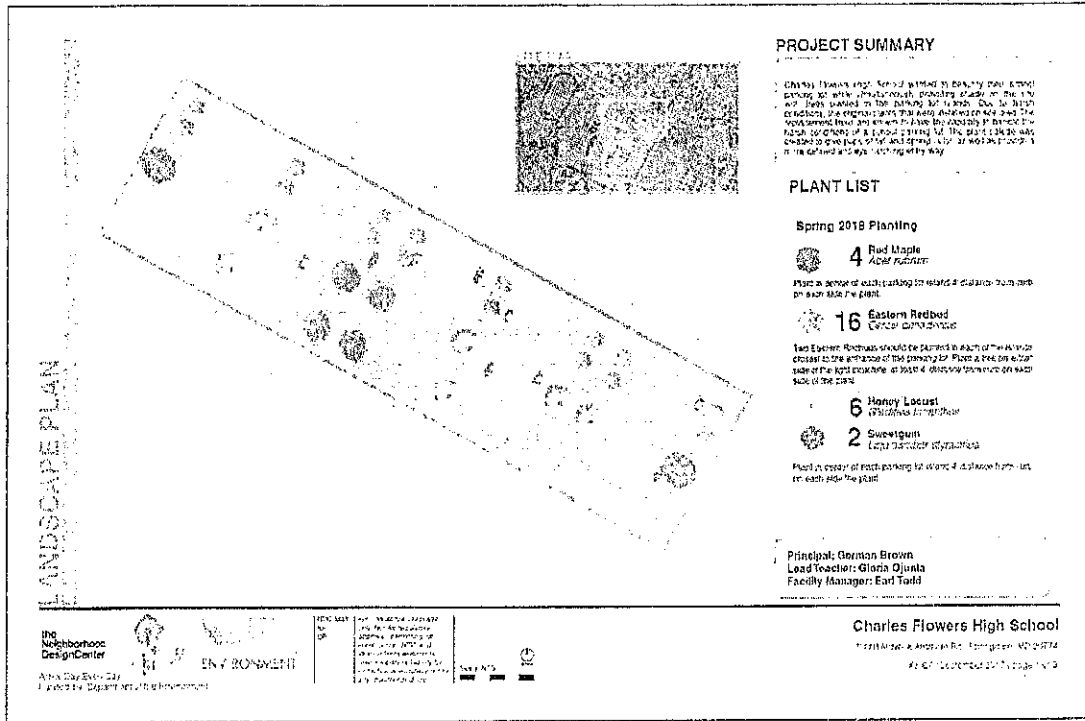
¹ 2018 Arbor Day Planting - County staff, Neighborhood Design Center, Prince George's Beautification Committee, Birchwood City Community, Maryland Department of Natural Resources and Master Gardner's assisted with the planting

To help ensure the health of the trees, DoE has the Neighborhood Design Center (NDC) under contract to provide design services to schools and assist with planting, at no cost to the participating group, for Arbor Day Every Day. NDC works with each group to: select an ideal tree planting location; determine project priorities (shade, wildlife value, education, erosion control); and develop a planting and maintenance plan with the number and location of each tree species (Figure 1). They also assist in marking planting spots to ensure that trees are properly located according to the design plan.

Table 3: Arbor Day Every Day Program - Tree Plantings in Fiscal Year 2018

Planting Date	Organization	Number of Trees	\$ Amount
October 12, 2017	Anacostia Watershed Society Environmental Youth Summit	50	Partnership with Alliance
October 28, 2017	John Hanson Montessori School ¹	15	Partnership with Alliance
October 28, 2017	Capital Heights Elementary	8	Partnership with Alliance
October 28, 2017	Calverton Elementary School	2	Partnership with Alliance
October 28, 2017	Carrollton Elementary School	9	Partnership with Alliance
April 11, 2018	Charles Flower High School	28	2,323.33
April 28, 2018	Montpelier Elementary	7	\$461.73
April 28, 2018	New Hope Elementary	Mulch	\$95.00
Spring	Bladensburg High School	Mulch and pots	\$235.65
May 12, 2018	Carrollton Elementary School	11	\$718.00
Total		130	\$3,833.71

Figure 1: Charles Flower High School Planting Plan



c. Woodland Conservation Education Activities - Staff hours expended on afforestation programs

The Sustainability Division of DoE spent approximately 1,800 hours educating citizens about the importance of trees to the environment, the Tree ReLEAF Grant Program, Tree City USA and the Arbor Day Event.



THE MARYLAND-NATIONAL CAPITAL PARK AND PLANNING COMMISSION

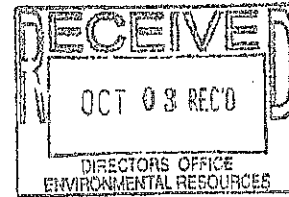
Prince George's County Planning Department
Office of the Planning Director

14741 Governor Oden Bowie Drive
Upper Marlboro, Maryland 20772
www.mncppc.org/pgco

(301) 952-3595

September 28, 2018

Mr. Adam Ortiz, Director
Prince George's County
Department of the Environment
1801 McCormick Drive, Suite 500
Largo, Maryland 20774



Re: FY 2018 Annual Forest Conservation Report

Dear Mr. Ortiz:

The purpose of this letter is to request assistance from the County's Department of the Environment (DoE) in the preparation of the Woodland Conservation Ordinance Annual Report to be submitted to the State of Maryland.

Each year the County is required to prepare an annual report regarding how it has complied with the state's Forest Conservation Act (FCA) through the implementation of our local ordinance. The staff of the Planning Department typically prepares this report with assistance and information received from the staff of DoE and the Department of Permitting, Inspections and Enforcement (DPIE). The current annual report will encompass Fiscal Year 2018 (July 1, 2017 to June 30, 2018) and is due March 31, 2019.

Staff from the Planning Department report on such items as the number of exemption letters issued, the number of tree conservation plans approved, the amount of land involved in all applications, the number of exemptions granted, and the number and size of off-site woodland conservation banks established.

For FY 2018, DoE staff are responsible for reporting the following items:

- a. Balance of funds in the Woodland Conservation Fund (EF49 Account 460632 Center 541506) as of the beginning and end of FY2018 (July 1, 2017 through June 30, 2018).
- b. Expenditures from the Woodland Conservation Fund for tree planting projects and other allowed uses during FY2018.
- c. Staff hours expended and associated staffing costs for program administration associated with the Woodland Conservation Program during FY2018.

We request that the information pertaining to your department be provided no later than Monday, December 3, 2018, so it is available for the upcoming state legislative session and the completion of the FCA report. The Planning Department will also seek information from DPIE and will coordinate this information in preparing the required report.

Mr. Adam Ortiz
Page 2

If you need additional clarification, please feel free to contact Katina Shoulars, Supervisor, Environmental Planning Section; or Kim Finch, Woodland Conservation Coordinator, Environmental Planning Section, at 301-952-3650. We look forward to working with your staff in our continued, mutual efforts to conserve and restore woodlands in Prince George's County.

Sincerely,

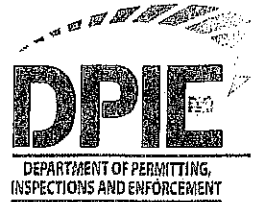

Andree Green Checkley
Planning Director

- c: Dr. Haitham Hijazi, Director, Prince George's County Department of Permitting, Inspections and Enforcement
Derick Berlage, Chief, Countywide Planning Division, M-NCPPC
Katina Shoulars, Supervisor, Environmental Planning Section, Countywide Planning Division, M-NCPPC
Kim Finch, Woodland Conservation Coordinator, Environmental Planning Section, M-NCPPC

ATTACHMENT 4



THE PRINCE GEORGE'S COUNTY GOVERNMENT
Department of Permitting, Inspections and Enforcement
Office of the Director



January 9, 2019

Ms. Andree Green Checkley, Director
Maryland-National Capital Park and Planning Commission
Prince George's County Planning Department
14741 Governor Oden Bowie Drive
Upper Marlboro, Maryland 20772

Re: FY 2018 Annual Woodland Conservation Report

Dear Ms. Checkley:

This is in response to your September 28, 2018, letter requesting information associated with the Department of Permitting, Inspections and Enforcement (DPIE) responsibilities relative to the Woodland Conservation Ordinance during Fiscal Year 2018 (July 1, 2017 to June 30, 2018).

Enclosed please find the statistical and administrative information regarding enforcement actions, labor hours, the amount of bonds posted and fee-in-lieu collected for afforestation/Reforestation activities. Additional information from the Department of the Environment (DoE) will be sent by their office.

If you have any questions or need additional information, please feel free to contact Mr. Rey de Guzman, P.E., Chief Engineer, Site/Road Plan Review Division, at 301.636.2060.

Sincerely,

Melinda M. Bolling
Acting Director

Enclosures

MMB:MR:dar

cc: Joe Gill, Acting Director, DoE
Dawit Abraham, P.E., Deputy Director, DPIE
Mary C. Giles, P.E., Associate Director, S/RPRD, DPIE
Behdad Kashanian, Associate Director, ID, DPIE
George Holmes, Assistant Associate Director, ID, DPIE
Rey de Guzman, P.E., Chief Engineer, S/RPRD, DPIE
James Coutourier, Chief, S/RPPU, P&LD, DPIE
Katina Shoulars, Supervisor, NRD, M-NCPPC
Kim Finch, Senior Planner, NRD, M-NCPPC
Mary Rea, Senior Planner, S/RPRD, DPIE

9400 Peppercorn Place, 5th Floor, Largo, Maryland 20774
Phone: 301.636.2020 ♦ <http://dpi.e.mypgc.us> ♦ FAX: 301.636.2021

DPIE
Woodland Conservation Enforcement and Permitting Program
Reporting Period: FY2018 (July 1, 2017 - June 30, 2018)

Enforcement:

The Inspections Division of the Department of Permitting, Inspections and Enforcement (DPIE) is responsible for the inspection and enforcement of the Prince George's County Woodland Conservation Ordinance (WCO). This activity assures forest preservation requirements are met for new communities, as well as responding to complaints and conducting investigations regarding "non-complying" woodland disturbance.

A. Compliance enforcement actions including the total number of woodland conservation related inspections:

Total number of woodland conservation inspections performed: 10,184

B. Noncompliance enforcement actions in a format prescribed by the Maryland Department of Natural Resources, which includes the location, violation type, enforcement action, and current status of individual violations:

FY2018 Woodland Conservation Violations – DPIE issued 10 conservation violations. See enclosure.

C. The number and amount of bonds secured for afforestation and reforestation:

Ten bonds totaling \$590,982.76 were posted in FY2018. See enclosure.

D. Fees collected for fee-in-lieu payments for woodland conservation:

\$136,918.86 total woodland fee-in-lieu payments have been collected for FY2018.

E. Use of monies in the Woodland Conservation Fund for tree planting projects and other allowed uses (funds collected are from fee-in-lieu payments and violation penalties):

Input will be provided by the Department of Environment (DoE)

F. Staff hours expended for the review permits, the overall program, bonding.

The time spent by Permit Processors, Bonding Specialists, Administrative Assistants, Supervisors, Planners and Engineers is estimated to be (150) hours with an approximate cost of \$3,375.00.

The estimated time spent on inspections and enforcement by inspection staff is approximately 5,082 hours with an approximate cost, including staff and equipment, of \$230,000

G. Afforestation programs and associated staffing costs.

The total DPIE staffing cost is \$233,375.