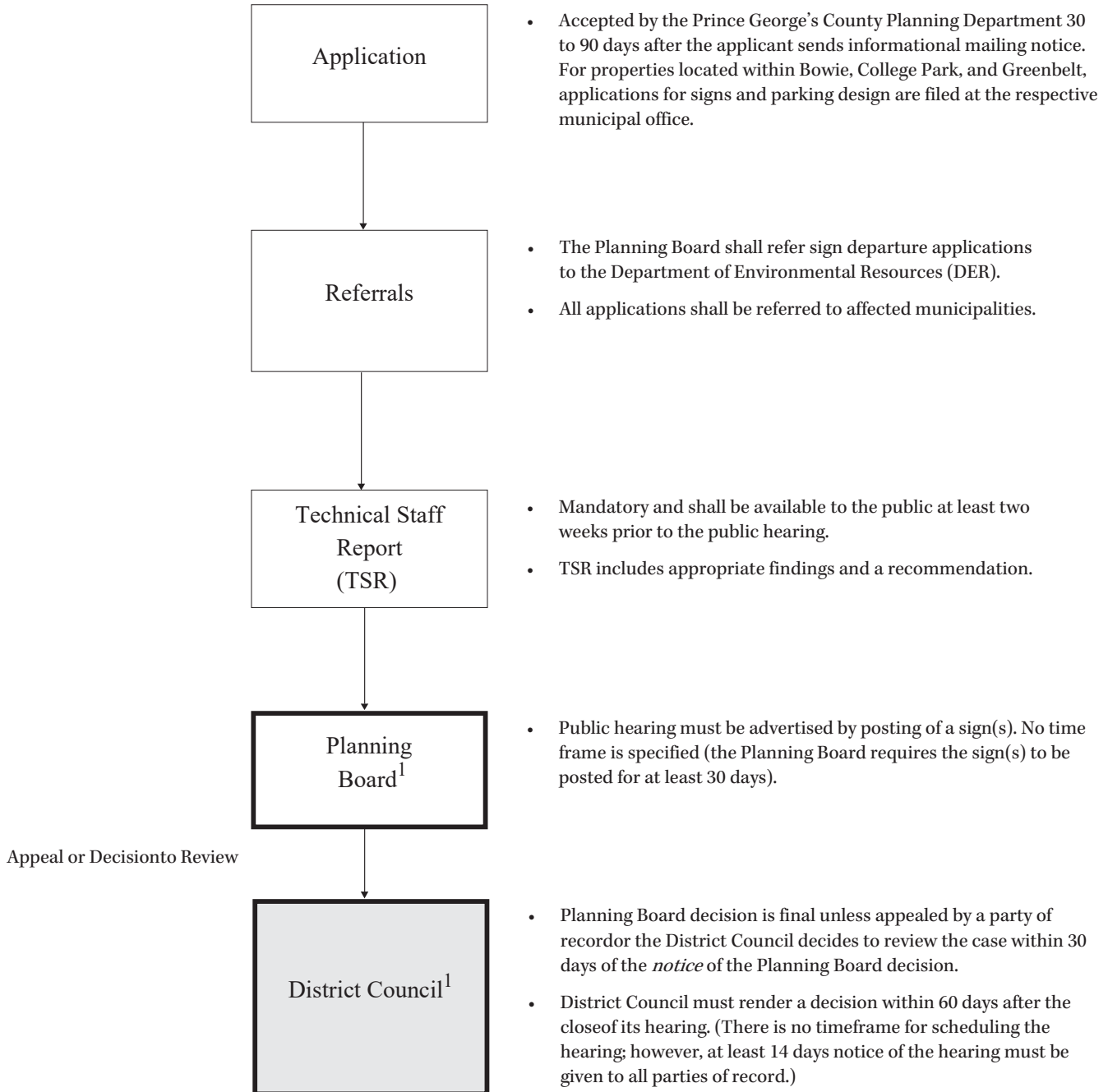


Departure Applications (Signs, Parking Design and Landscape Manual)

Approximate Processing Time: 4 Months



¹ Public hearings

FOR PRIOR ORDINANCE ONLY

Departure Applications (Signs, Parking Design and Landscape Manual)

Required Findings, Section 27-239.1(b)(9)

- A. In order for the Planning Board to grant the departure, it shall make the following findings:
- i. The purpose of this Subtitle will be equally well or better served by the applicant's proposal.
 - ii. The departure is the minimum necessary, given the specific circumstances of the re-request.
 - iii. The departure is necessary in order to alleviate circumstances which are unique to the site or prevalent in areas of the County developed prior to November 29, 1949.
 - iv. The departure will not impair the visual, functional, or environmental quality or integrity of the site or of the surrounding neighborhood.
- B. For a departure from a standard contained in the *Landscape Manual*, the Planning Board shall find, in addition to the requirements in Paragraph (9)(A), above, that there is no feasible proposal for alternative compliance, as defined in the *Landscape Manual*, which would exhibit equal or better design characteristics.