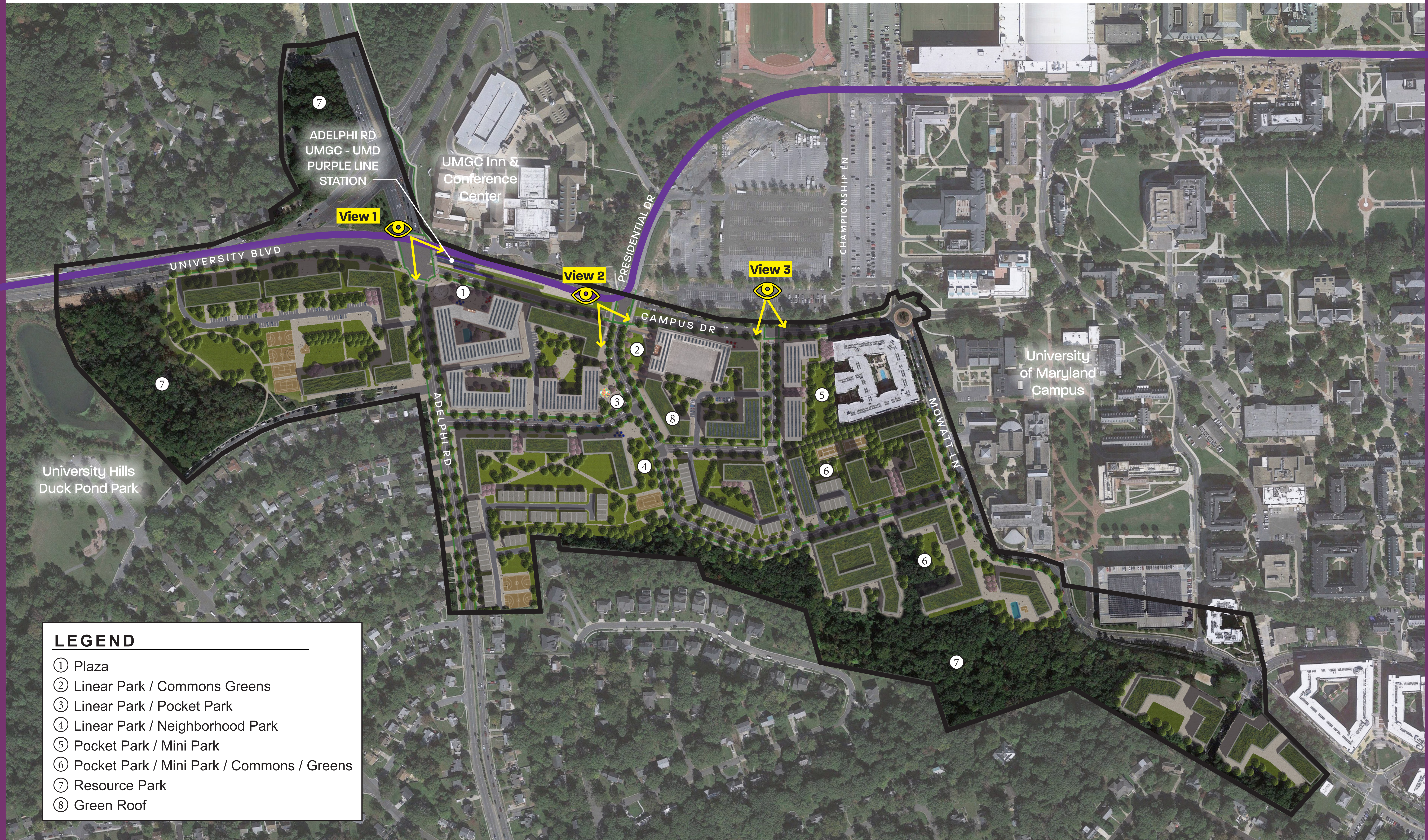


Overview

These concepts illustrate how the plan area may develop, pursuant to County regulations, over time; they are for illustrative purposes only and do not reflect required or mandated development. Market conditions will dictate the phasing, scale, and ultimate land uses developed.



LEGEND

- ① Plaza
- ② Linear Park / Commons Greens
- ③ Linear Park / Pocket Park
- ④ Linear Park / Neighborhood Park
- ⑤ Pocket Park / Mini Park
- ⑥ Pocket Park / Mini Park / Commons / Greens
- ⑦ Resource Park
- ⑧ Green Roof

FIND OUT MORE



Find Preliminary Sector Plan, FAQs, and more at <http://bit.ly/AdelphiRd> Follow #ARSP on social @PGPlanningMD

View 1: Plaza

These concepts illustrate how the plan area may develop, pursuant to County regulations, over time; they are for illustrative purposes only and do not reflect required or mandated development. Market conditions will dictate the phasing, scale, and ultimate land uses developed.



ADELPHI RD UMGC - UMD
PURPLE LINE STATION



**FIND
OUT
MORE**



Find Preliminary Sector Plan, FAQs, and more
at <http://bit.ly/AdelphiRd>
Follow #ARSP on social @PGPlanningMD

View 2: Continuation of Presidential Drive

These concepts illustrate how the plan area may develop, pursuant to County regulations, over time; they are for illustrative purposes only and do not reflect required or mandated development. Market conditions will dictate the phasing, scale, and ultimate land uses developed.



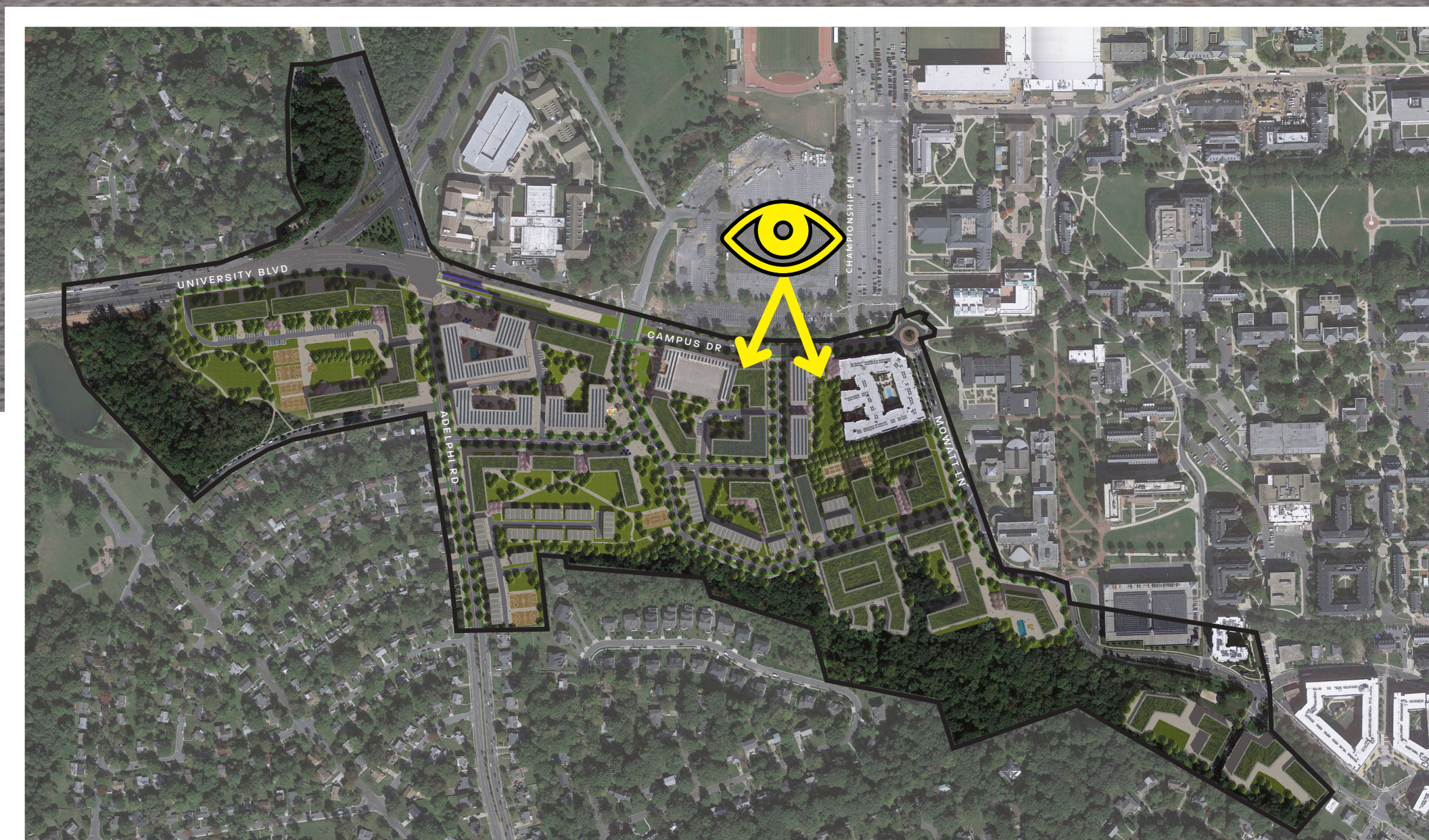
**FIND
OUT
MORE**



Find Preliminary Sector Plan, FAQs, and more
at <http://bit.ly/AdelphiRd>
Follow #ARSP on social @PGPlanningMD

View 3: Street Level

These concepts illustrate how the plan area may develop, pursuant to County regulations, over time; they are for illustrative purposes only and do not reflect required or mandated development. Market conditions will dictate the phasing, scale, and ultimate land uses developed.



**FIND
OUT
MORE**



Find Preliminary Sector Plan, FAQs, and more at <http://bit.ly/AdelphiRd>
Follow #ARSP on social @PGPlanningMD