



THE MARYLAND-NATIONAL CAPITAL PARK AND PLANNING COMMISSION
Prince George's County Planning Department

BOWIE-MITCHELLVILLE AND VICINITY MASTER PLAN

COMMUNITY HERITAGE, CULTURE & DESIGN COMMUNITY CHAT October 12, 2020

Thomas Lester
Project Manager
Community Planning Division
M-NCPPC





HOW TO PARTICPATE - TEAMS

- This meeting will be recorded and shared on the website
- Please MUTE yourself and turn OFF your video, until called upon
- If you have a comment or question, raise your hand or type it in the chat
- Unmute yourself if called upon.

TURN ON/TURN OFF CAMERA

MUTE/UNMUTE

RAISE/LOWER HAND

OPEN MEETING CHAT





MEET THE TEAM

Bowie-
Mitchellville
& Vicinity
Master Plan



Thomas Lester,
Project Manager



Andrew McCray,
Deputy Project
Manager



Tyler Smith,
Resource Team
Member



AGENDA - OCTOBER 12, 2020



Project & Community
Heritage, Culture &
Design Overview based
on Existing Conditions
Report




Q&A



Upcoming Events



PROJECT SCHEDULE SUMMARY

 February 2020 – September 2020



 February 18, 2020
 Planning Board
Initiation



COMPLETE

 June 13, 2020
 Public Kickoff

COMPLETE

 August 27, 2020
 Draft Existing
Conditions
Report



COMPLETE

 September 16, 2020
 Draft Existing
Conditions Report
Presentation

COMPLETE

PROJECT SCHEDULE SUMMARY CONT.


 **October 2020 – Fall 2021**


 **Sept. - Oct. 2020**
 Community Chats

HERE

 **November 2020**
 Playbook of Strategies
Presentation

UPCOMING

 **Summer 2021**
 Permission to Print
Draft Master Plan



 **Fall 2021**
 Joint Public Hearing

PROJECT SCHEDULE SUMMARY CONT.

 December 2021 – May 2022



 December 2021
 Planning Board Adoption

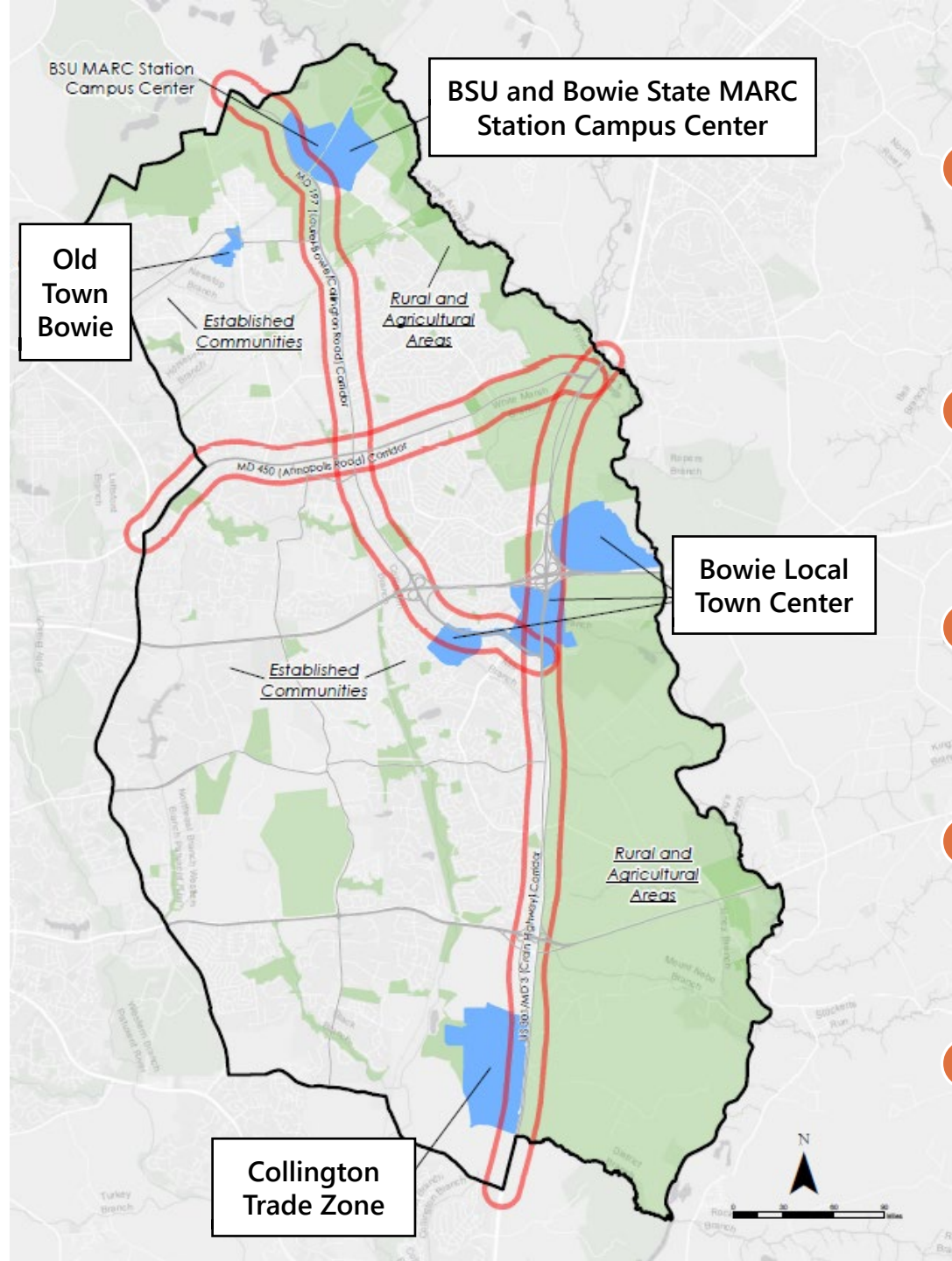
 January 2022
 Council Work Session

 February 2022
 Council Approval

 May 2022
 Approval with 2nd Joint Public Hearing



FOCUS AREAS & CORRIDORS



- Bowie State University and Bowie State MARC Station Campus Center
- Old Town Bowie
- Bowie Local Town Center
- Collington Trade Zone
- Corridors MD 197, MD 450, & US 301/MD 3



MASTER PLAN OVERVIEW



- Shared long-term vision with policies & strategies

- Implement Plan 2035

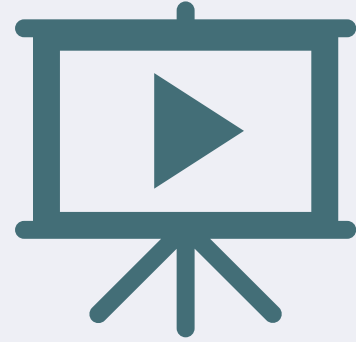
- Provide policies and strategies for implementation

- Replaces the 2006 master plan and 2010 sector plan

- Identify and analyze existing conditions



DRAFT EXISTING CONDITIONS REPORT & PRESENTATION



- Watch the presentation on our website

- Read the breakout group summary

- Visit the website & comment and download the PDF

Visit our website

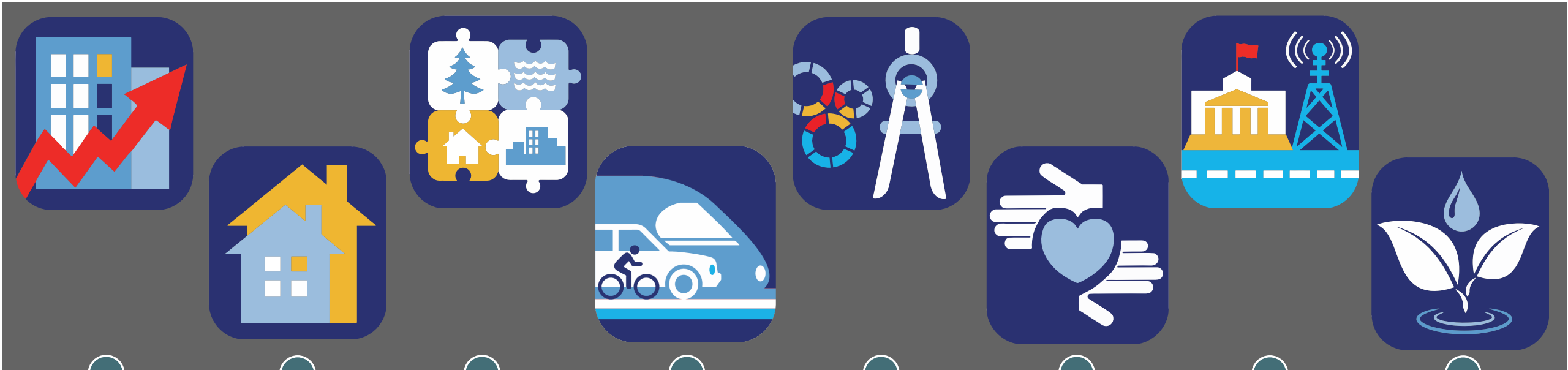
<https://www.mncppc.org/3390/Bowie-Mitchellville-Master-Plan>

Download Existing Conditions Report

<https://bowievicinity.konveio.com/draft-existing-conditions-report>



MASTER PLAN ELEMENTS



Economic
Prosperity

Housing
&
Neighborhoods

Land Use

Transportation
&
Mobility

Community
Heritage,
Culture &
Design

Healthy
Communities

Public
Facilities

Natural
Environment



COMMUNITY HERITAGE, CULTURE & DESIGN



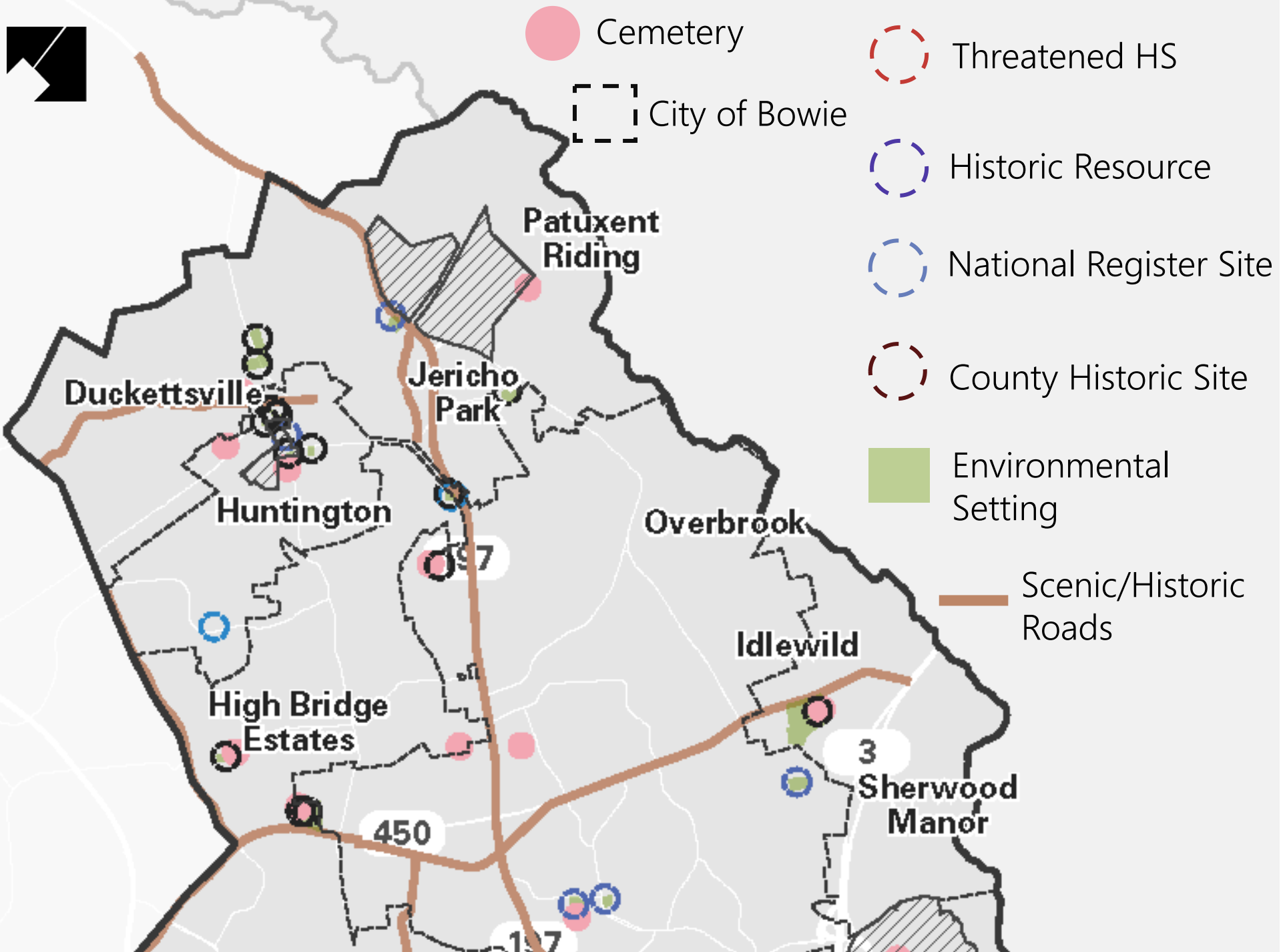
- Historic properties and features
- Midcentury Modern properties
- African-American history
- Archeology & cemeteries
- Old Town Bowie
- Arts & Entertainment District (A&E)



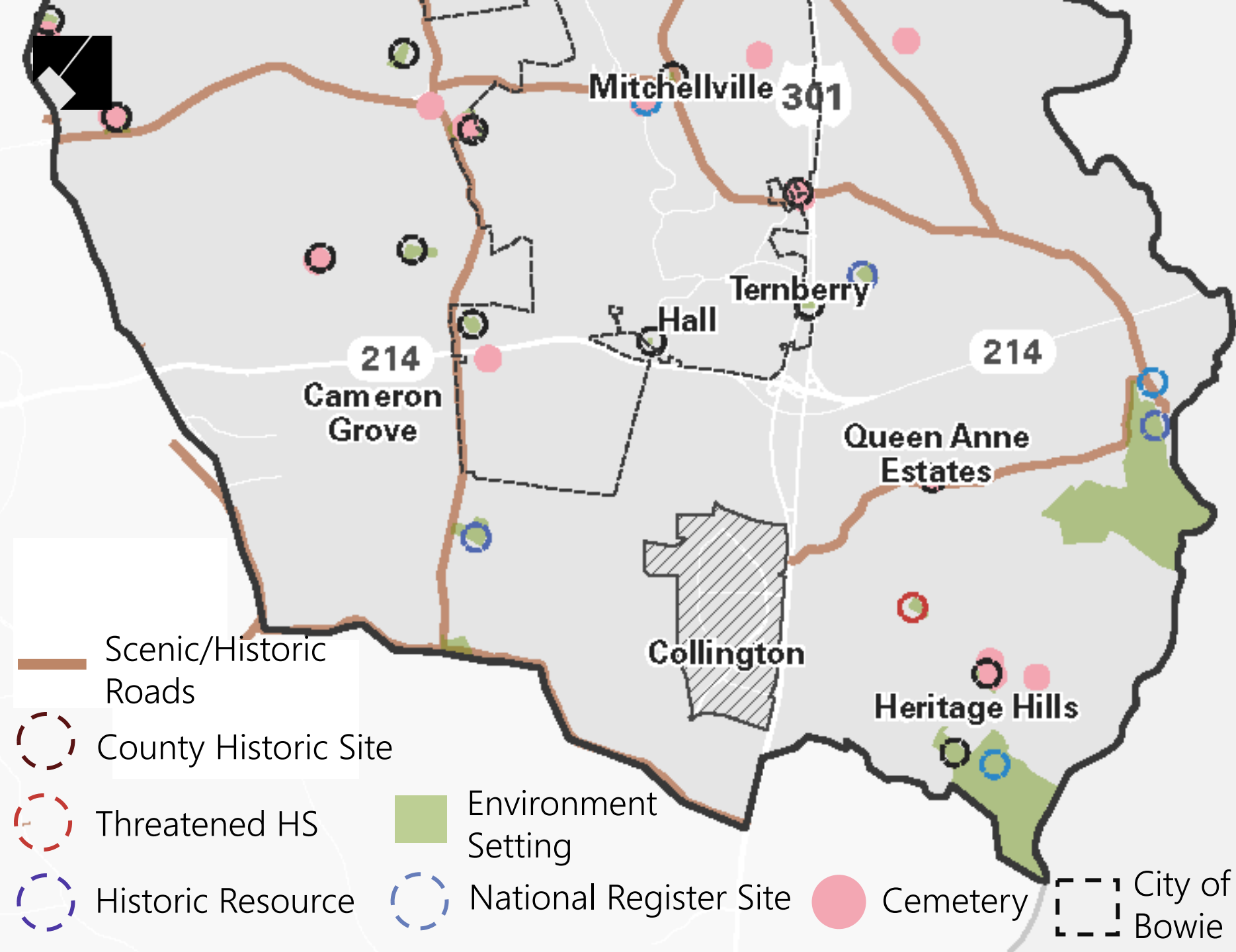
HISTORIC PROPERTIES & FEATURES



- 30 County-designated Historic Sites and 7 Historic Resources, and 10 National Register Sites
- Includes Railroad, Belair Mansion, Belair Stable Museums
- Anacostia Trails Heritage Area covers more than 9,500 acres
- Properties of Concern – Goodwood



HISTORIC FEATURES



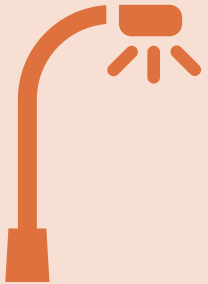
HISTORIC FEATURES



MIDCENTURY MODERN PROPERTIES

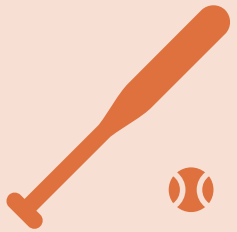


- Levitt & Son's features the Country Clubber Modern model
- Notable suburban development pattern
- Prince George's Modern Study 1941-1978; recognizes 20 properties in plan area
- Only 2 have been documented





HISTORIC AFRICAN-AMERICAN HISTORIC PROPERTIES

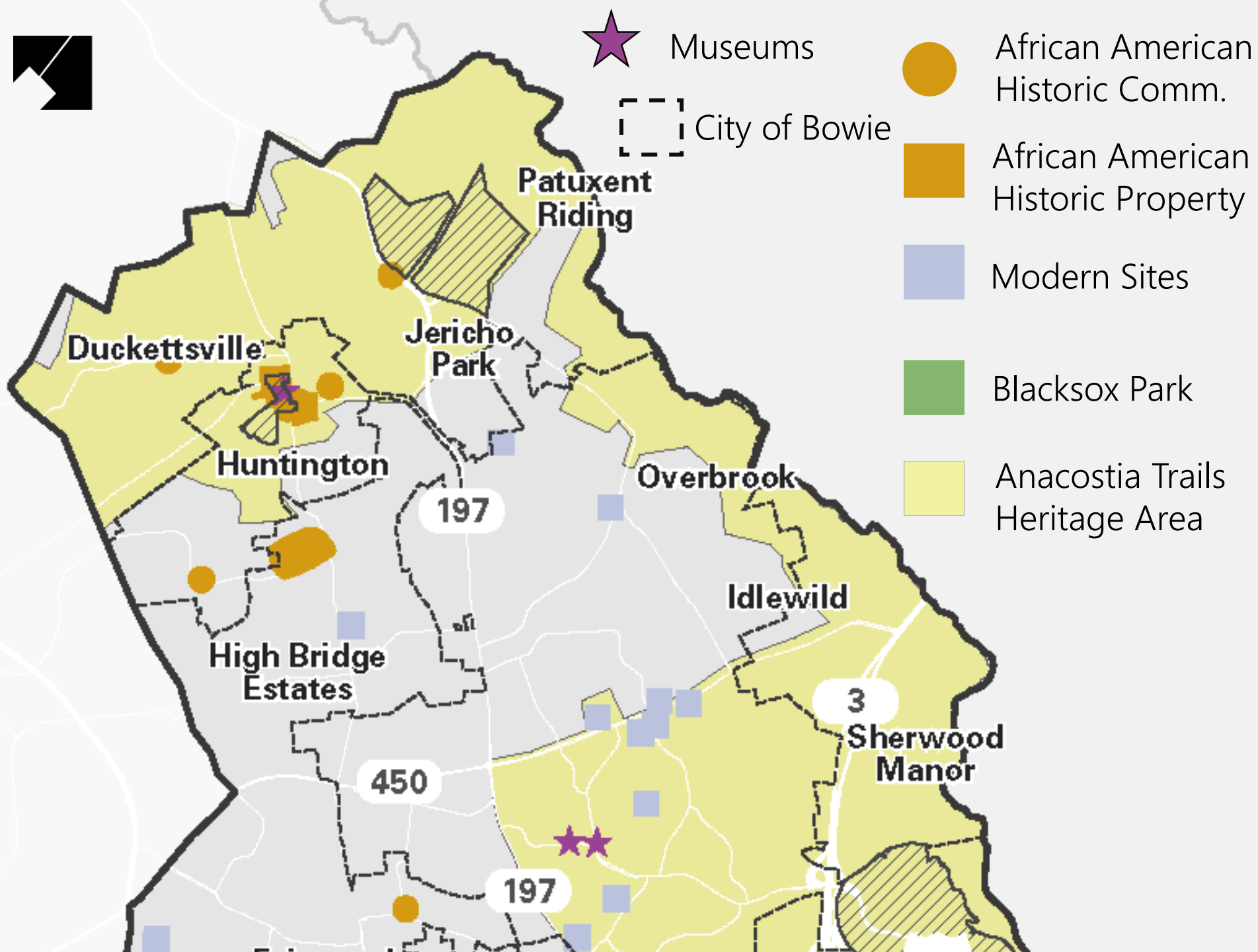


- 2 African-American communities, and 10 historic properties

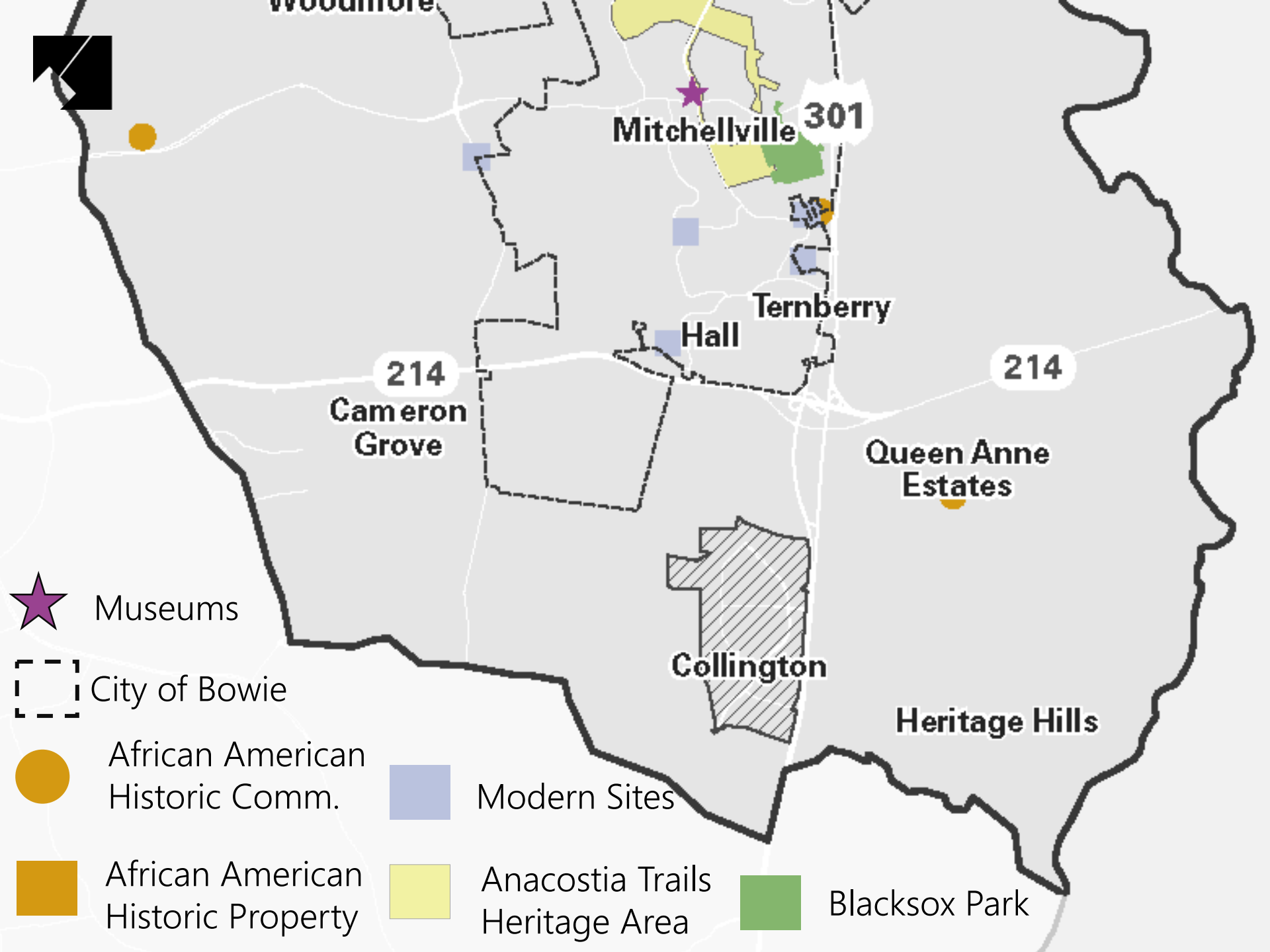
- Blacksox Park, Fletchertown, Duckettsville, Bowie State University



- Highlight African-American contribution through celebrations, interpretations, etc.



HISTORIC FEATURES CONT.



HISTORIC FEATURES CONT.



HISTORIC CEMETERIES & ARCHEOLOGY



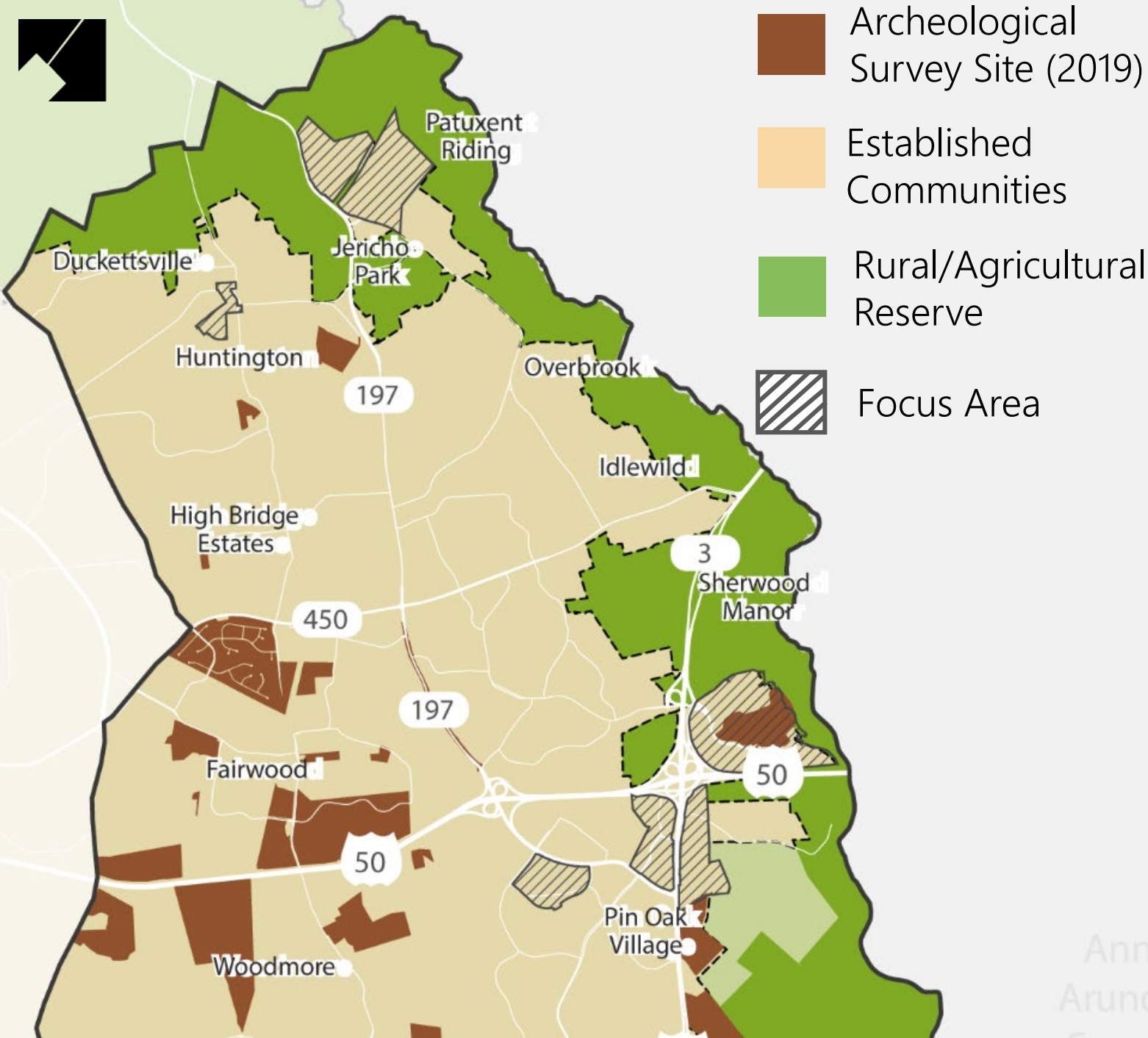
- 31 cemeteries scattered throughout the plan area

- Most historic cemeteries associated with family and churches – some are still active today



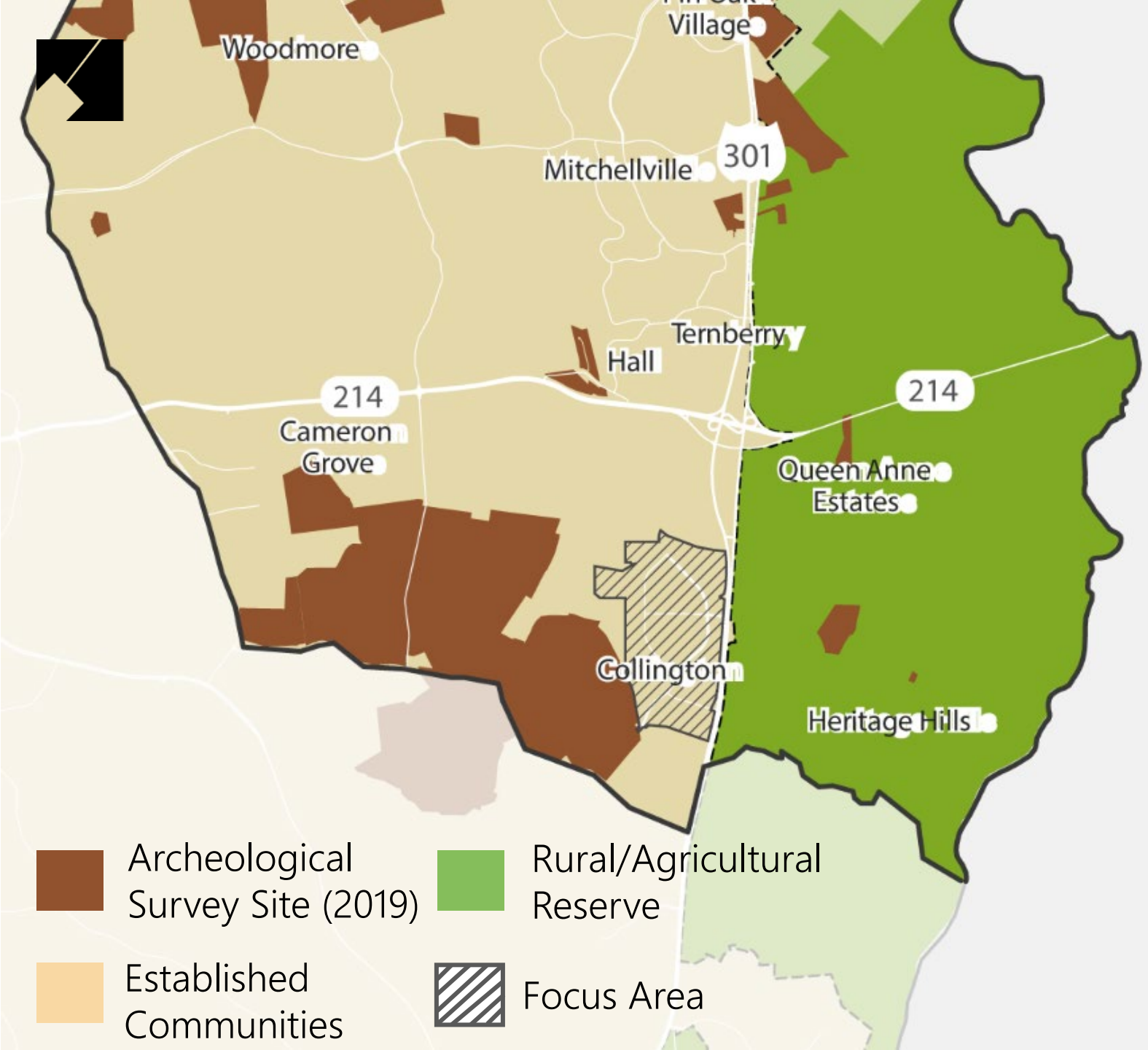
- Archeological sites clustered around Collington Trade Zone, US 50, Melford

- New developments require archeological review
– Melford property reviewed and preserved



- Archeological Survey Site (2019)
- Established Communities
- Rural/Agricultural Reserve
- Focus Area

ARCHEOLOGICAL SITES



ARCHEOLOGICAL SITES



OLD TOWN BOWIE

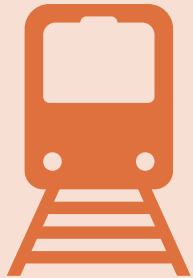


- Railroad settlement from 1870s (formally known as Huntington City)

- Railroad station moved to BSU in 1989

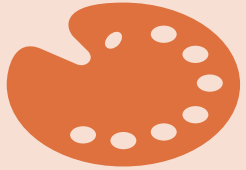
- Features a tourism office and museum

- Deemed not eligible for designation on the National Register

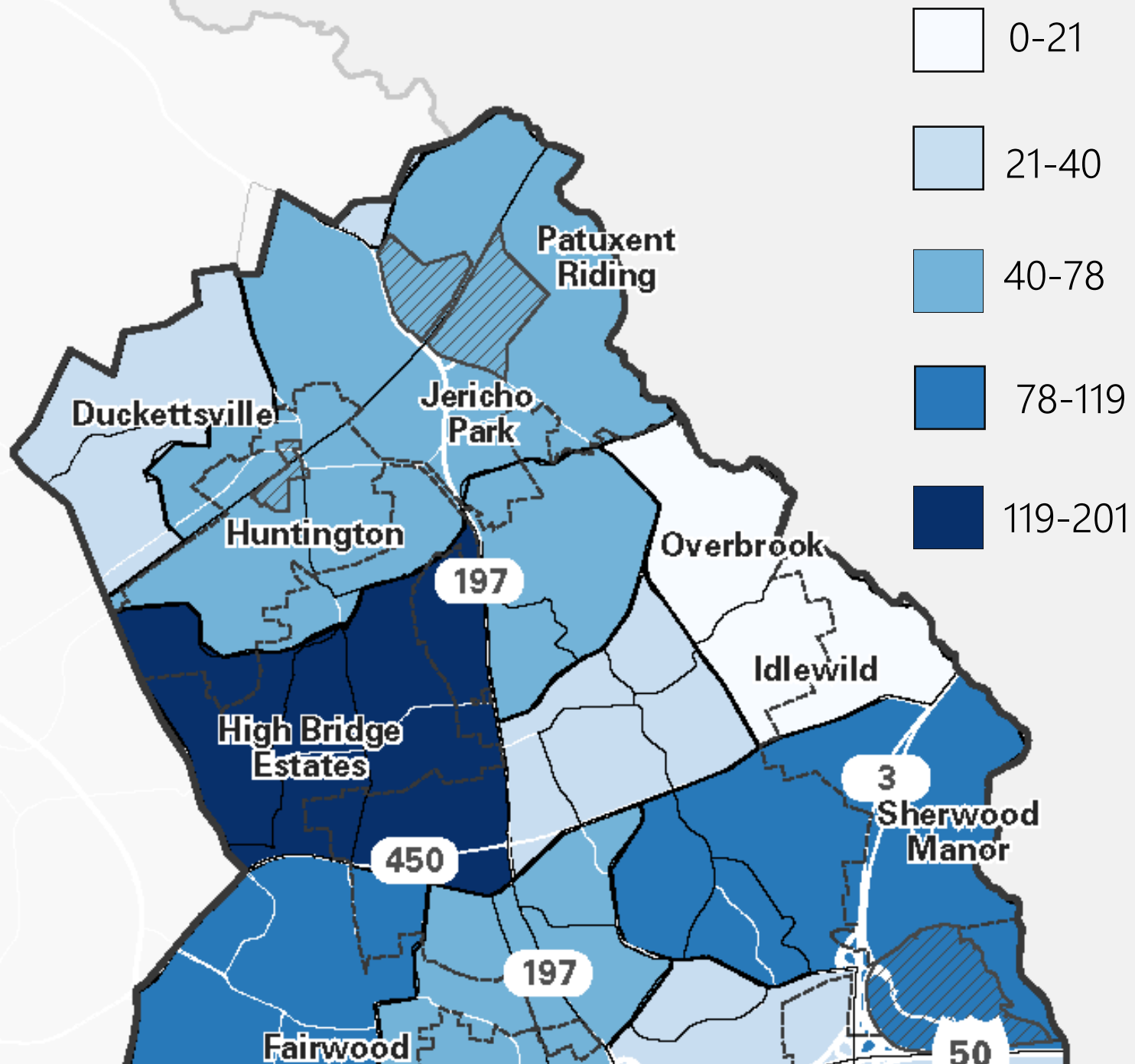




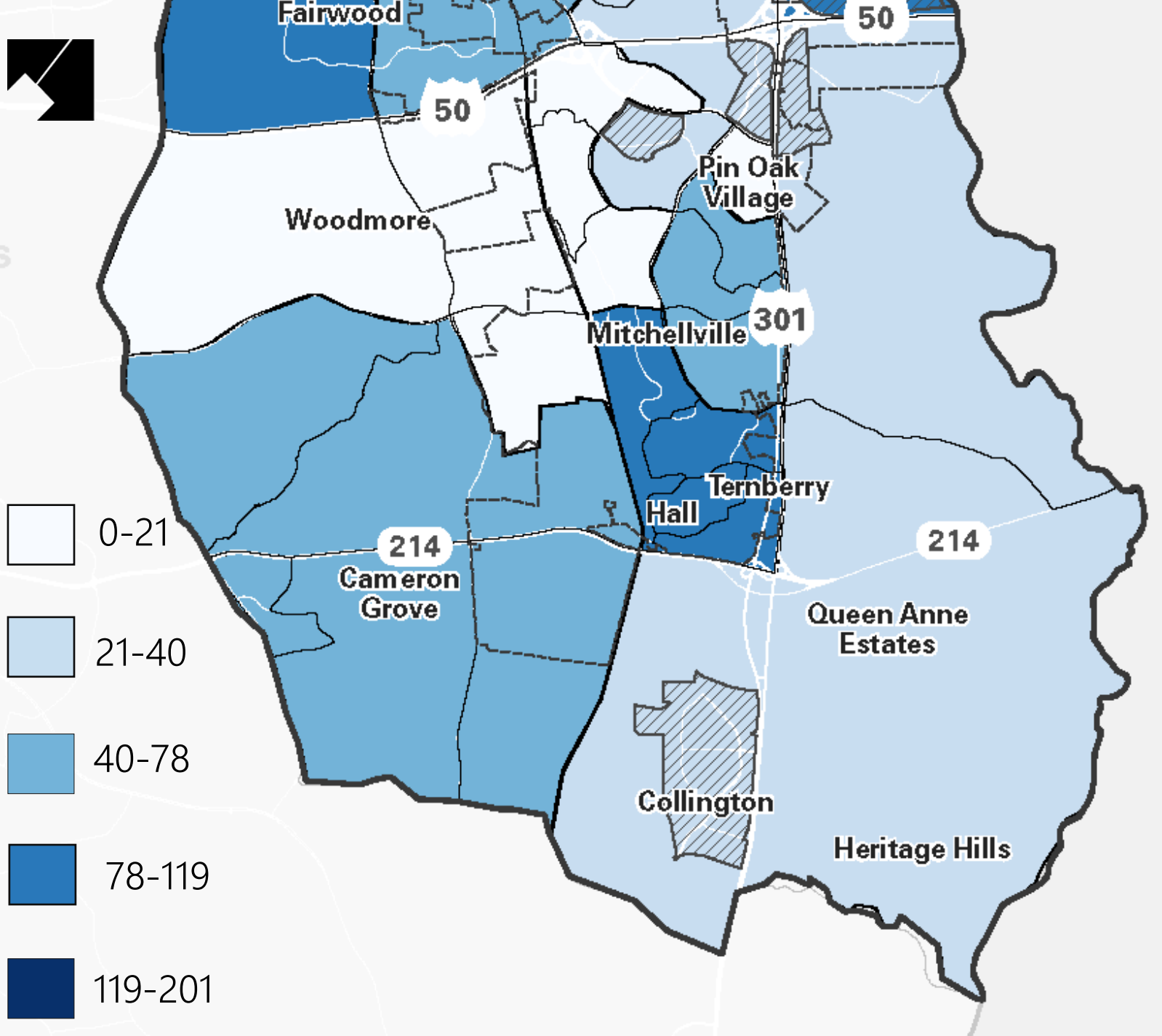
ARTS & ENTERTAINMENT DISTRICT



- Maryland has designated 28 Arts & Entertainment Districts – For example, Gateway Arts District
- Bowie Regional Arts Vision Association advocated for the City to apply for designation for Old Town Bowie
- Plan area is home to 1,781 residents whose occupation is in A&E
- New anchor, affordable artist housing, and artist space



TOTAL ARTIST OCCUPATION POPULATION (2017)



TOTAL ARTIST OCCUPATION POPULATION (2017)



QUESTION #1

Are there any historic properties that are important to you? Why?

Are you aware of any properties that should be designated a Historic Site by the County that have not been designated already?



QUESTION #2

Do you think Old Town Bowie should pursue a historic district designation from Prince George's County?

What opportunities and challenges would this designation bring to the area?



QUESTION #3

What historic elements (past events, architecture, landscape, etc.) of the plan area are important to you and how can they be leveraged to make it distinct?



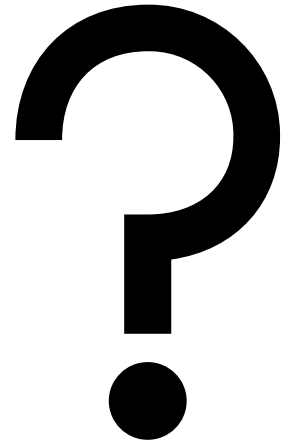
QUESTION #4

What elements (museums, signage, etc.) or activities (concerts, festivals, etc.) could occur at Old Town Bowie and/or Bowie Town Center that could foster arts and entertainment?

Would you support these types of activities?

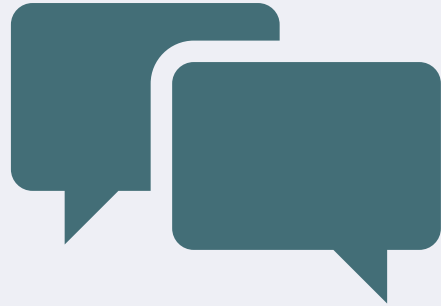


QUESTIONS?

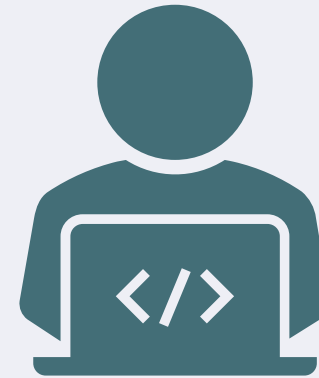




UPCOMING EVENTS



Virtual Community
Chats Cont.
September to
October



Virtual Presentation –
Playbook of Strategies
November



COMMUNITY CHATS

PLANNING ELEMENTS



Economic Prosperity



Community
Heritage, Culture
& Design



Housing &
Neighborhoods



Healthy
Communities



Land Use



Public
Facilities



Transportation
& Mobility



Natural
Environment

- Focused look at each of the planning elements
- Watch our previous chats on our website
- Register on our website for a topic that interests you

<https://www.mncppc.org/3390/Bowie-Mitchellville-Master-Plan>



COMMUNITY CHATS

SCHEDULE

Date	Time	Topic
September 22	7:00 p.m. – 8:00 p.m.	Public Facilities
September 24	6:00 p.m. – 7:00 p.m.	Land Use, Zoning & Urban Form
September 30	7:00 p.m. – 8:00 p.m.	Housing & Neighborhood
October 1	6:00 p.m. – 7:00 p.m.	Healthy Communities
October 6	7:00 p.m. – 8:00 p.m.	Economic Prosperity
October 8	6:00 p.m. – 7:00 p.m.	Natural Environment
October 12	7:00 p.m. – 8:00 p.m.	Community Heritage, Culture & Design
October 14	6:00 p.m. – 7:00 p.m.	Transportation & Mobility



PLAYBOOK OF STRATEGIES



Scheduled for early November

Reviews data and feedback received

Creates urban design schemes for certain nodes

Addresses challenges within each of the plan elements



census
2020 

Prince George's **MARYLAND**
county
Proud

Visit my2020census.gov or call (844)330-2020



Thomas Lester
Project Manager
Community Planning Division
M-NCPPC
Thomas.Lester@ppd.mncppc.org

THANK YOU

Visit the website & download the PDF
<https://bowievicinity.konveio.com/draft-existing-conditions-report>